



BLU Grand M2 Rear Camera Replacement

This guide will help you replace the...

Written By: Alan Rodriguez



INTRODUCTION

This guide will help you replace the rear-facing camera on the back panel of the BLU Grand M2. It is a five-step process and can be completed in as little as six minutes.

The process is of a moderate difficulty and requires five tools for completion.

TOOLS:

T2 Torx Screwdriver (1)

Tweezers (1)

Phillips #000 Screwdriver (1)

Spudger (1)

iFixit Opening Tool (1)

Step 1 — Confirm the Device



- Check the front panel and confirm you are repairing the BLU Grand M2 (figure 1)
- Turn the device over and identify the the rear-facing camera (figure 2) This is what you will be replacing

Step 2



- Locate the two torx screws at the bottom of the phone and remove them using the T2 Torx Screwdriver.

Step 3



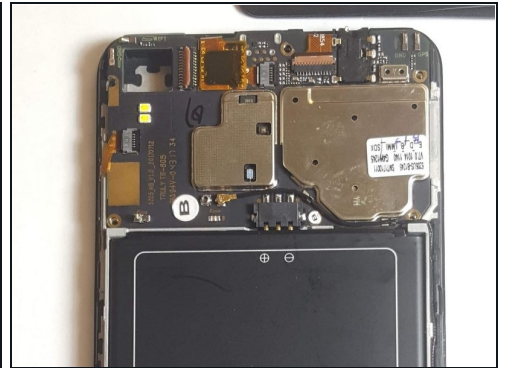
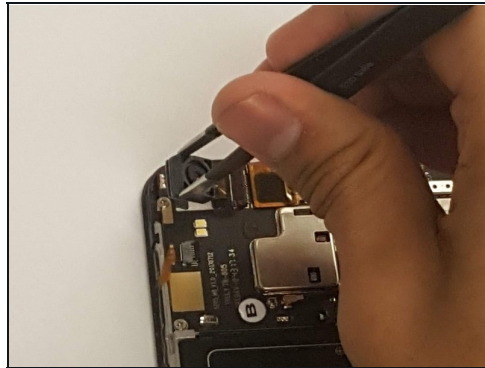
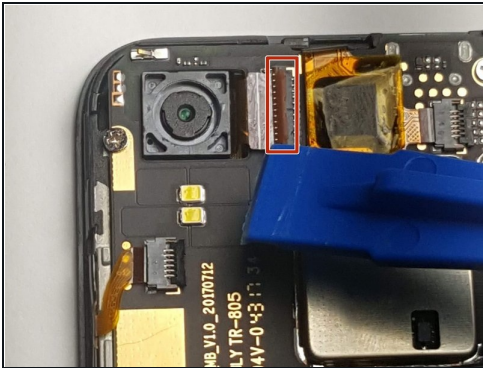
- Use the suction and pry tools to carefully remove the black plate.
- ⚠ Be cautious!! Do not damage the phone display or inside components while using pry and suction tools.

Step 4



- Identify the back-panel camera in the left -hand corner of the open device. (Figure 1)

Step 5



- Use the Plastic Pry Tool to carefully to lift the tab on the right-hand side of the connector.
- Carefully remove camera from housing using a pair of [tweezers](#).

To reassemble your device, follow these instructions in reverse order.