



Hisense Chromebook C11 Hard Drive Replacement

This guide involves the manipulation of small,...

Written By: Chelsea Charles



INTRODUCTION

This guide involves the manipulation of small, intricate parts. Please use caution.

Before disassembling your device, please refer to the [troubleshooting guide](#) to investigate other possible solutions to your problem.



TOOLS:

[iFixit Opening Tool](#) (1)

[Phillips #00 Screwdriver](#) (1)

[Phillips #000 Screwdriver](#) (1)

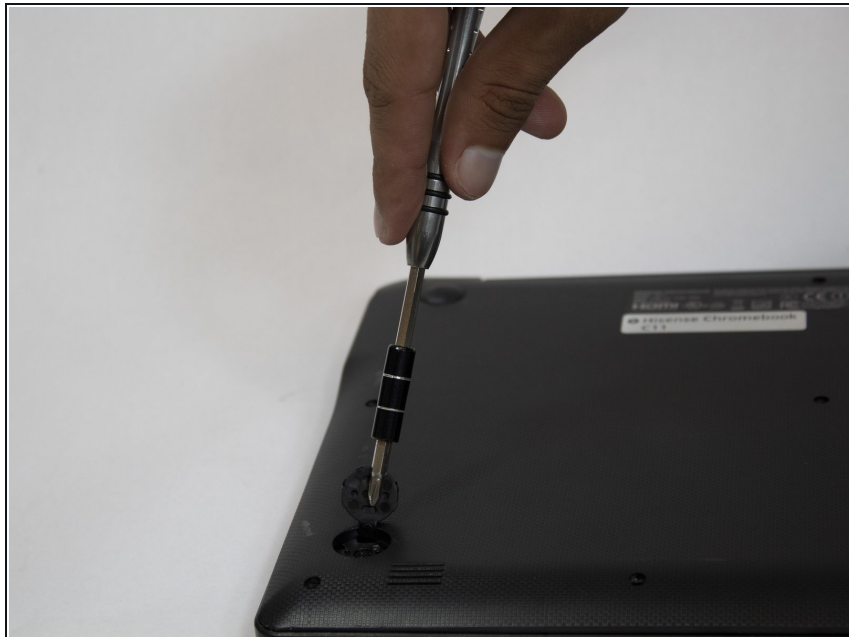
[Tweezers](#) (1)

Step 1 — Back Panel



- Remove the front two hub caps.
- When finished, you should be able to remove the back cover.

Step 2



- Unscrew the screws with the Phillips #00 screwdriver.

Step 3



- Pry the perimeter of the case open with the plastic opening tool.
- Remove the back panel.

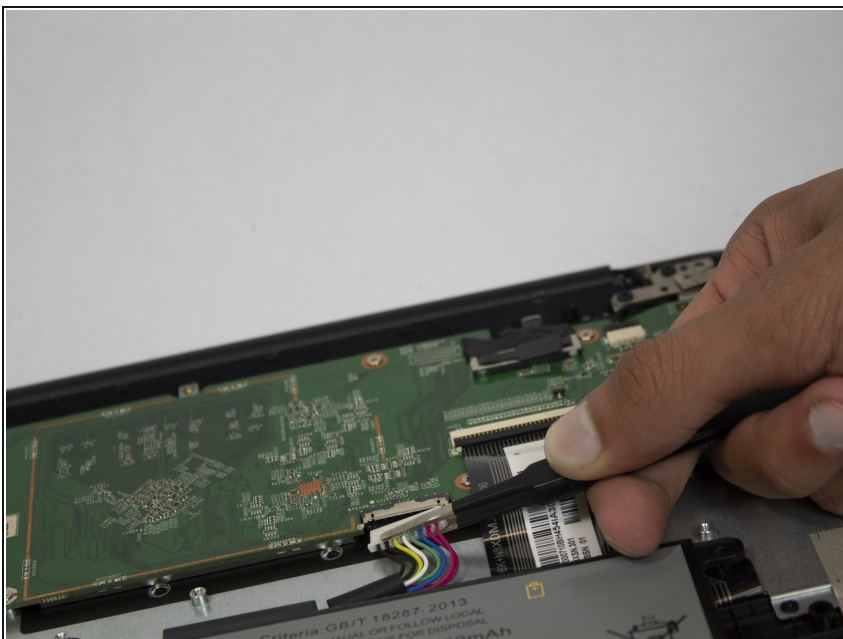
Step 4 — Battery



⚠ Be careful not to puncture the battery with the screwdriver or any sharp instrument.

- Unscrew the screws with the Phillips #000 screwdriver.

Step 5



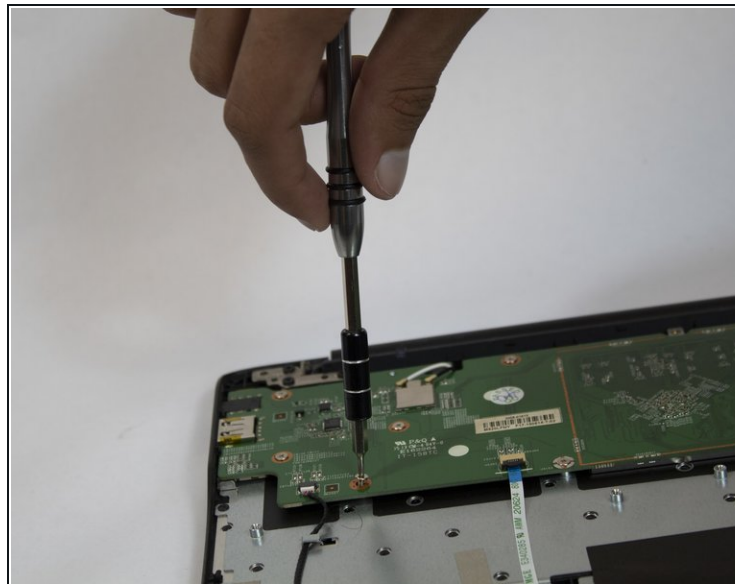
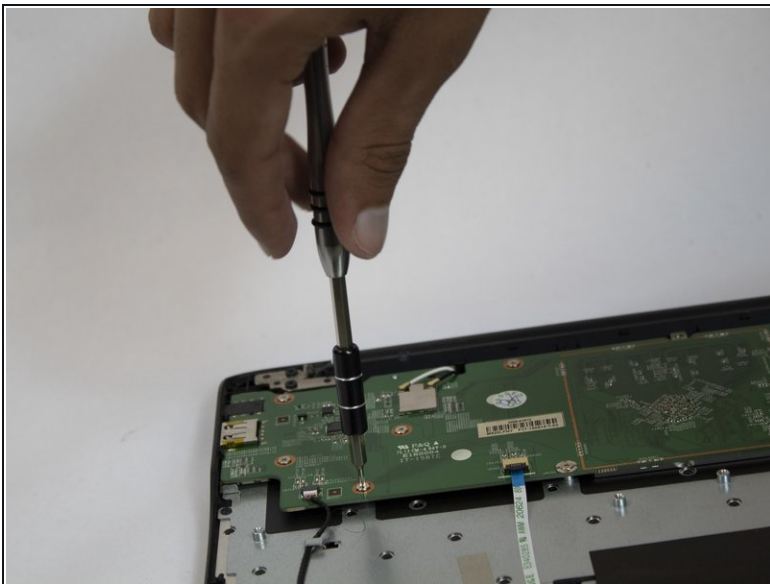
- Use the tweezers to unplug the battery.

Step 6



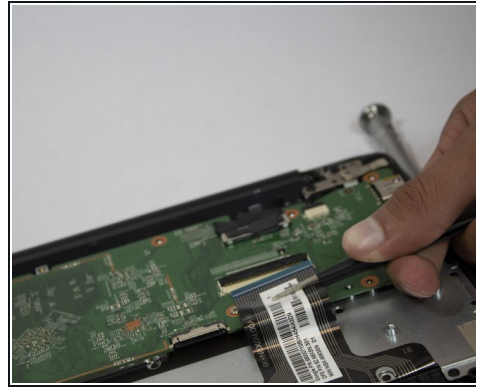
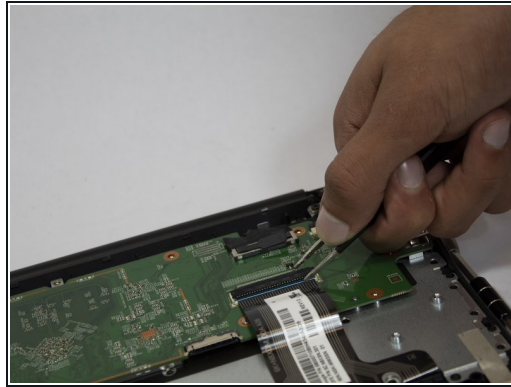
- Remove the battery.

Step 7 — Hard Drive



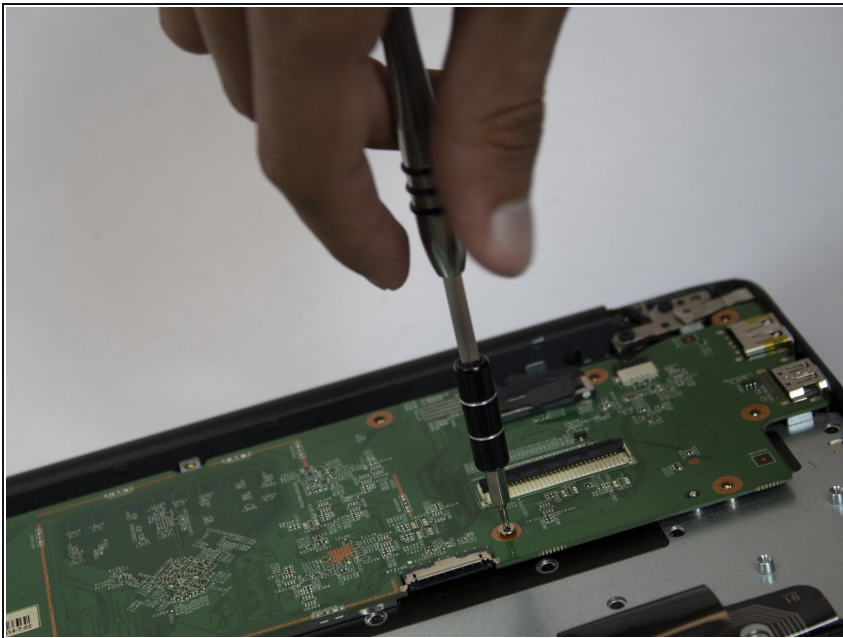
- Unscrew all of the screws that you can access on the hard drive.
- If you cannot reach the screw beneath the black strip, move on to the next step.

Step 8



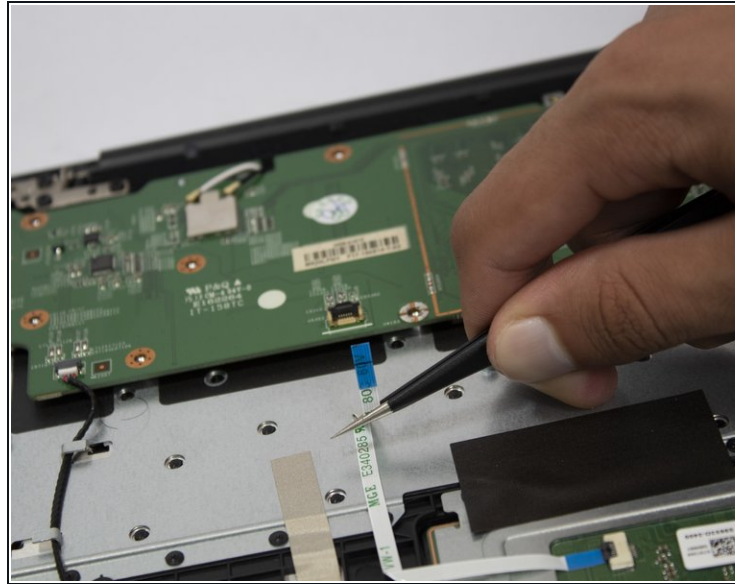
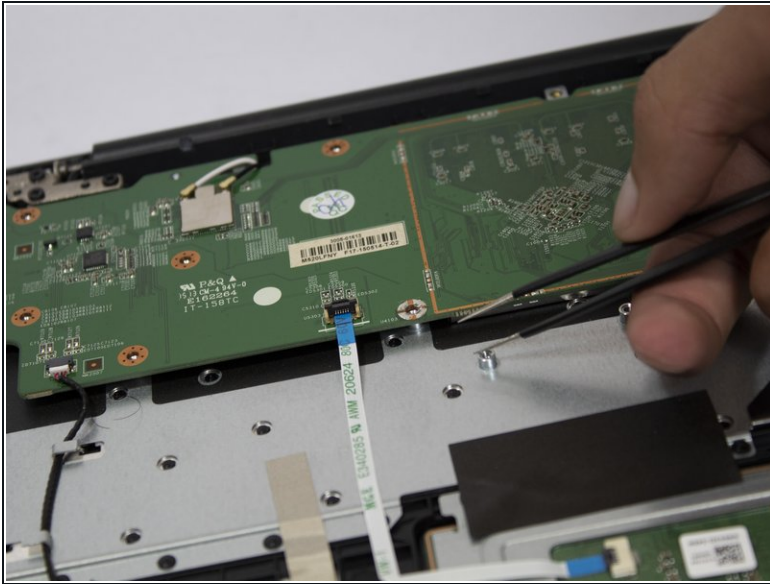
- Remove the black strip using the tweezers.

Step 9



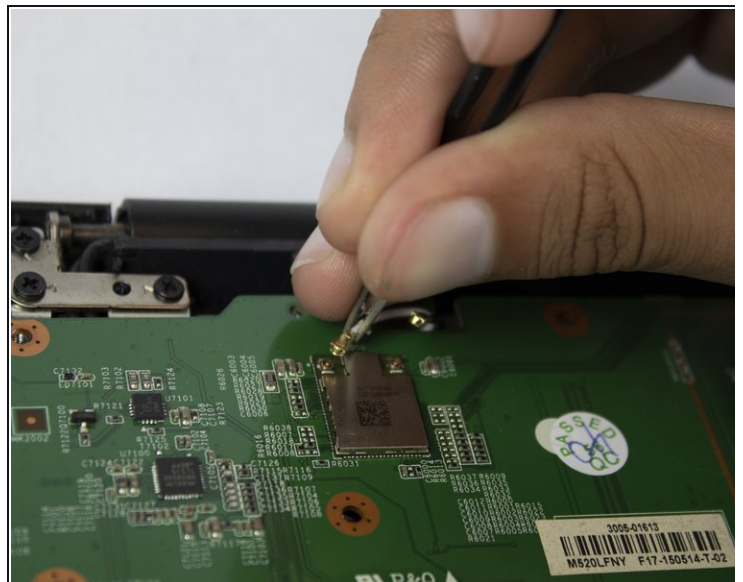
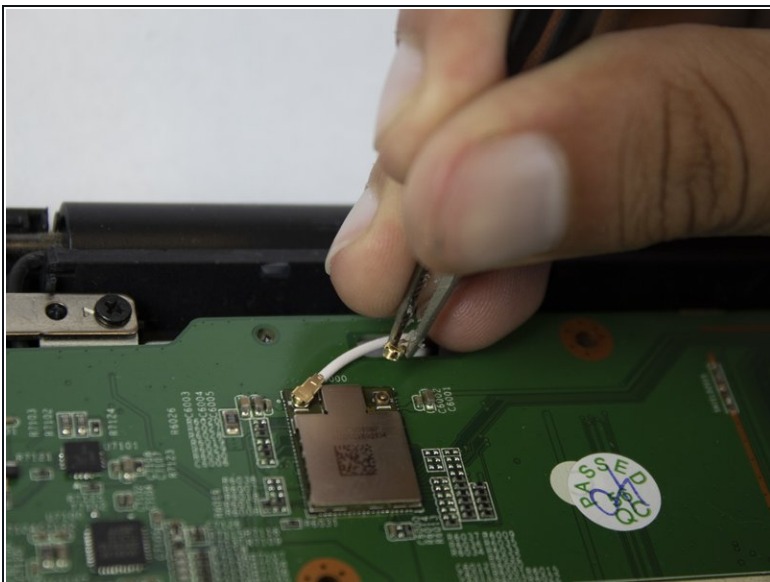
- Unscrew the screw beneath the black strip if you haven't done so already.

Step 10



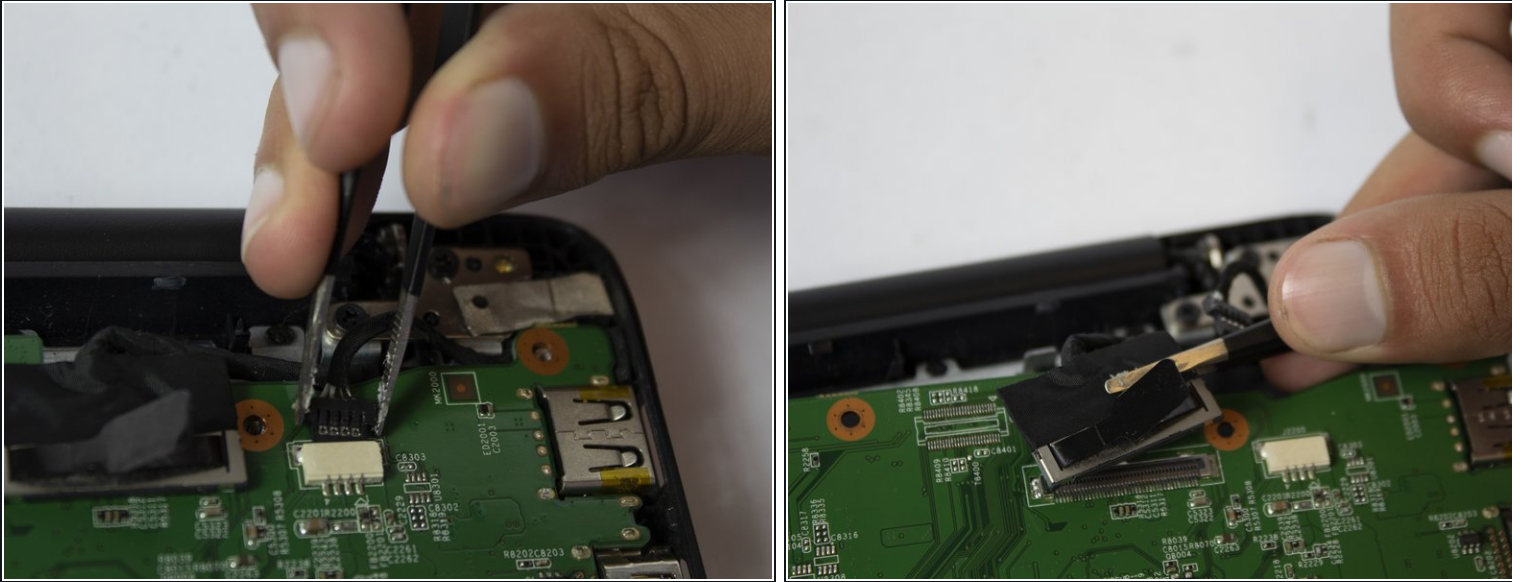
- Remove the ribbon with the tweezers.

Step 11



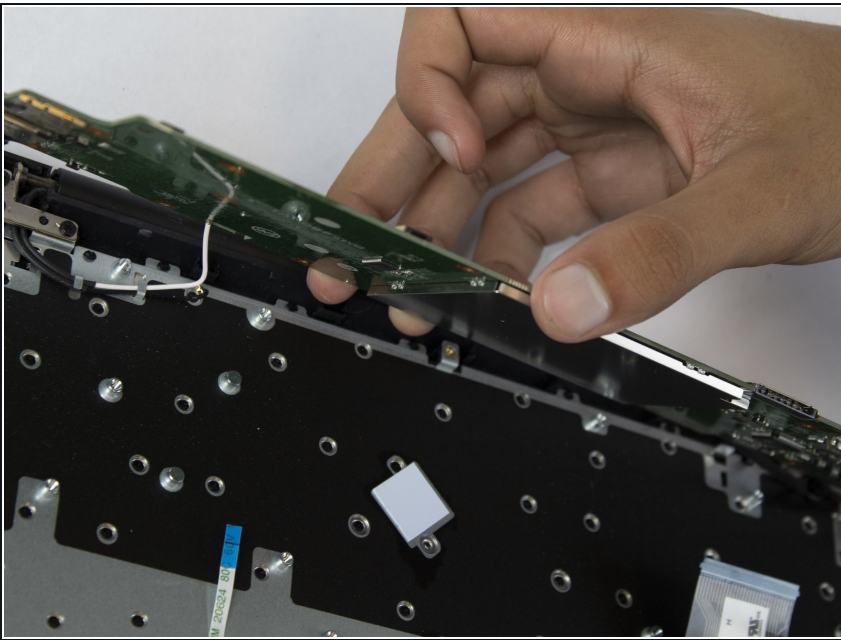
- Using the tweezers, carefully remove the latches attaching the silver computer chip.

Step 12



- Continue gently removing all remaining points of attachment.

Step 13



- Carefully remove the hard drive.

To reassemble your device, follow these instructions in reverse order.