



# Lenovo S20-30 Display Monitor Replacement

This guide will walk you through how to replace your Lenovo S20-30 display monitor to fix an unresponsive screen.

Written By: Alexis Wesling



## INTRODUCTION

The screen may become unresponsive in your Lenovo S20-30 netbook requiring you to replace the display monitor. Displays are around \$60 depending on where you buy it. Before replacing your display monitor turn off the computer to avoid risk of electric shock. There are many components to your monitor so it is common for parts to break or disconnect. By following these steps, you can successfully achieve detaching the old display monitor to reassemble the new one.



### TOOLS:

- [iFixit Opening Tools](#) (1)
-

## Step 1 — Battery



- Flip the Lenovo S20-30 over so that the bottom panel is facing upward.

## Step 2



- Slide the manual battery latch to the unlock position, so that the red is showing.

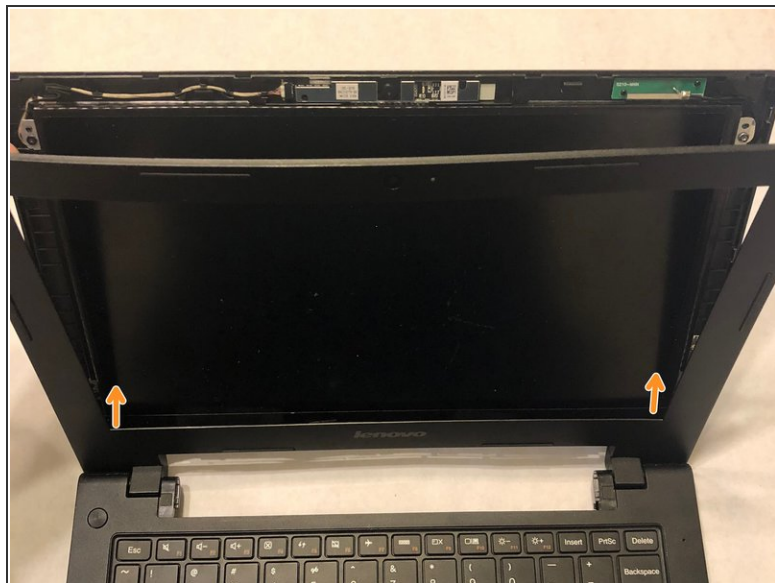


## Step 3



- Slide and hold the spring-loaded battery latch on the other side (right) while sliding the battery out of the computer.
- Grab new Lenovo S20-30 battery for replacement.

## Step 4 — Display Monitor



- Pry open the frame using a plastic opening tool.
- Pull frame upward to remove it.

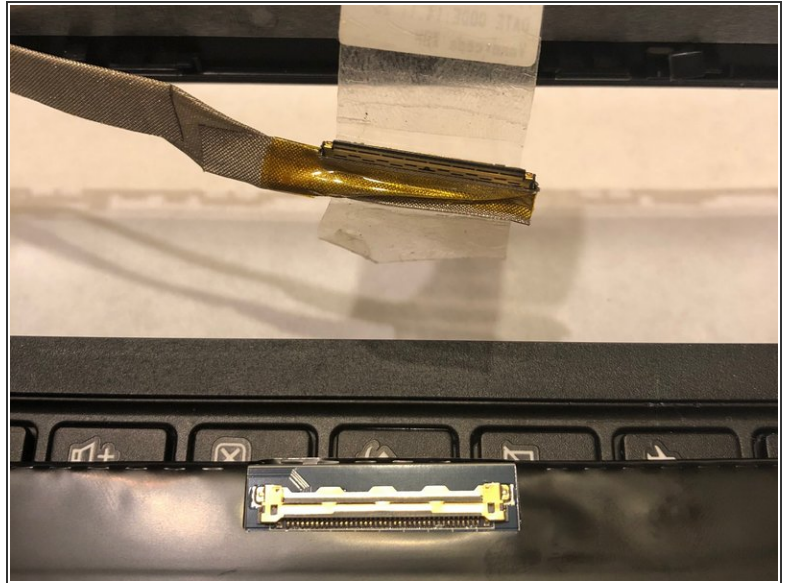
## Step 5



- Unscrew four M2 x 3mm screws using a Phillips #000 screwdriver.



## Step 6



- Slowly remove display monitor to reveal the connector.
- Remove the connector by gently pulling it out.

## Step 7



- Replace with new display monitor.

To reassemble your device, follow these instructions in reverse order.