



WowWee CHiP Robot Dog Smart Watch Battery Replacement

Replacing the battery inside of the WowWee CHiP Robot Dog Smart Watch.

Written By: Joseph Dantes





TOOLS:

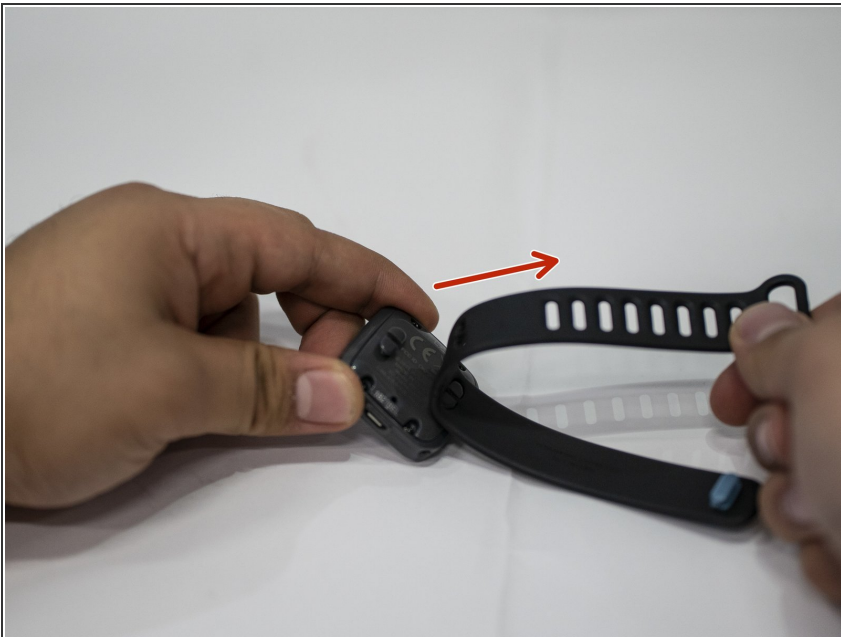
- [Phillips #0 Screwdriver](#) (1)
 - [Soldering Iron](#) (1)
-

Step 1 — Smart Watch Battery



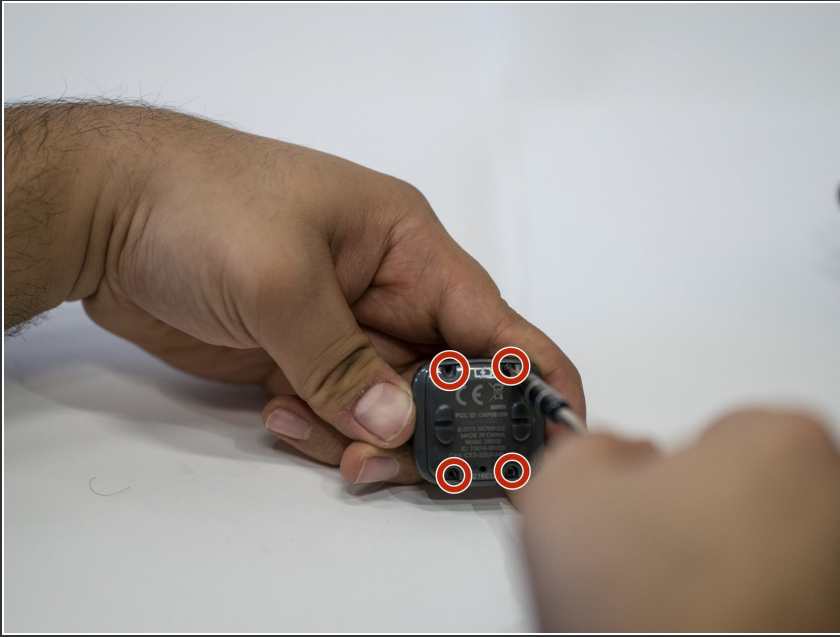
- Place the Smart Watch on its back or side so that the full watch band is visible.

Step 2



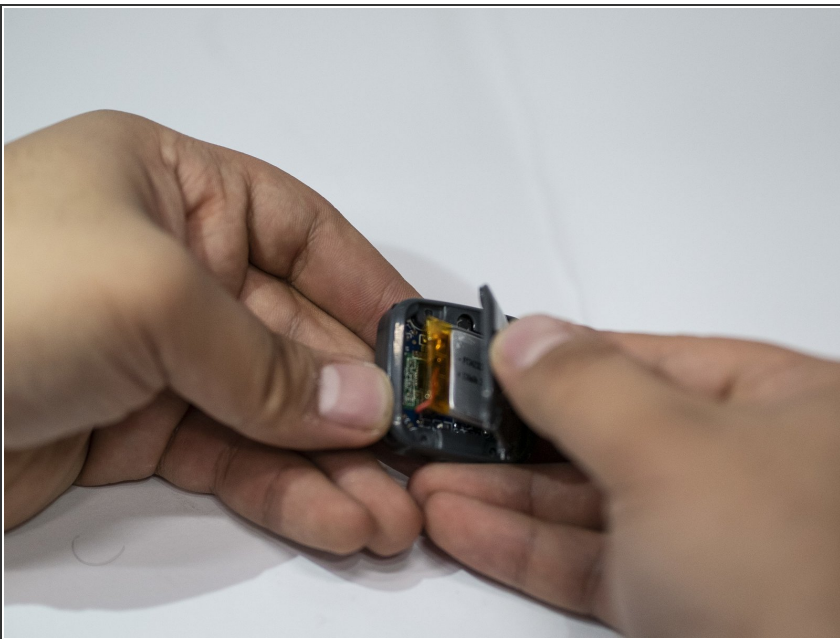
- Remove the wrist strap by gently pulling the band off of the plastic pegs on the back of the watch.

Step 3



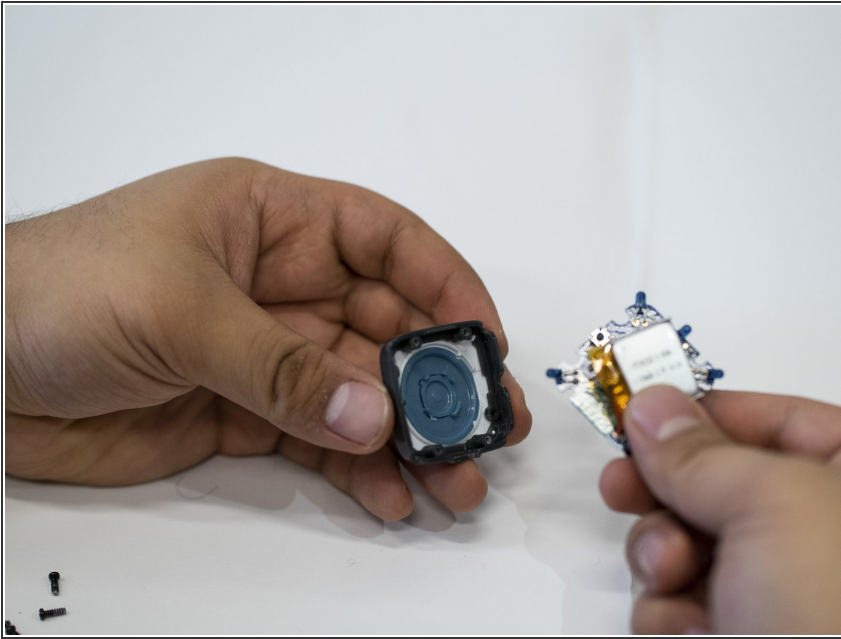
- Remove the four screws in the back of the watch using a Phillips #0 screwdriver.

Step 4



- Gently pull off the back side of the watch component.

Step 5



- Pull the battery and motherboard component out.

To reassemble your device, follow these instructions in reverse order.