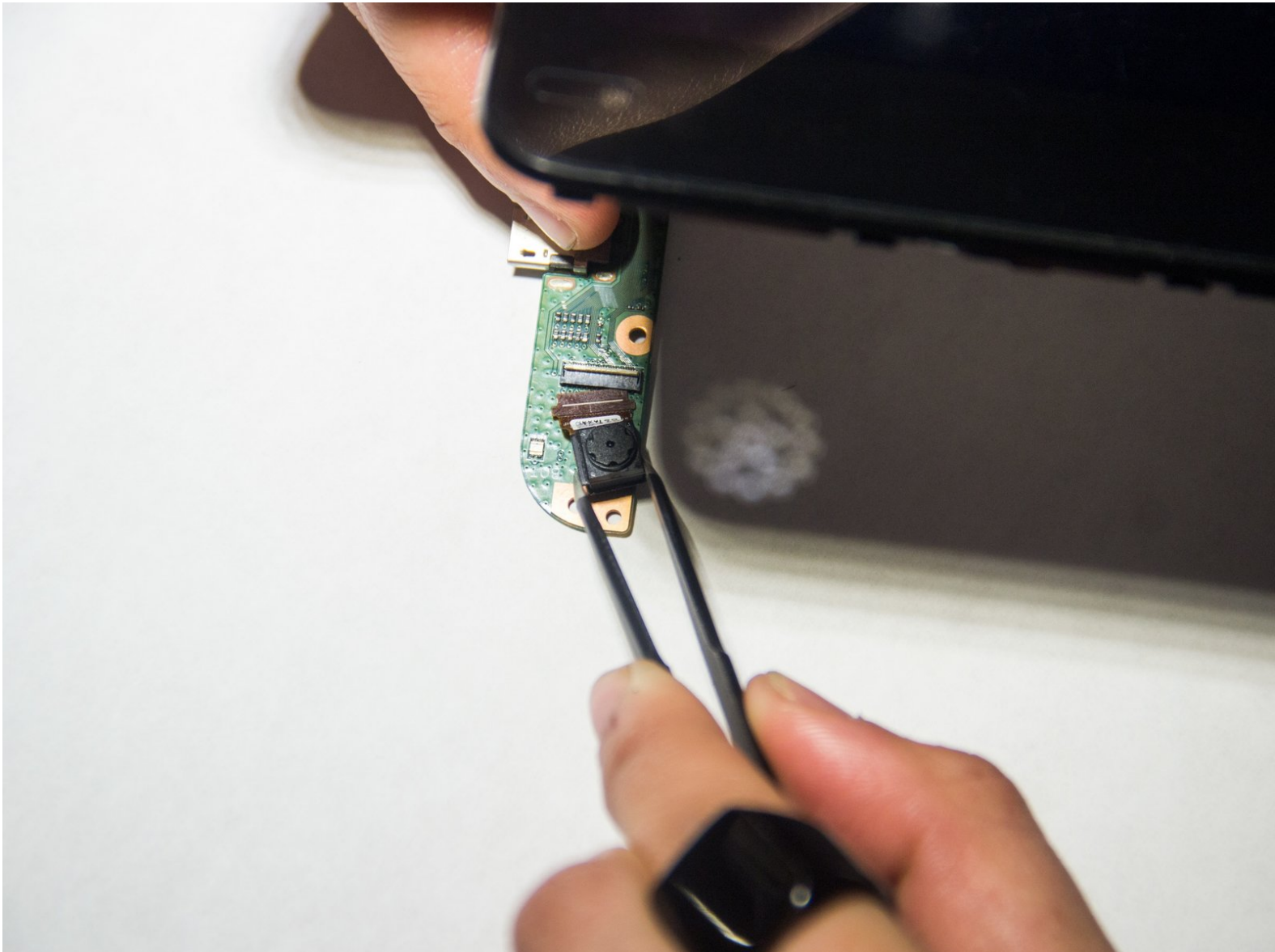




ASUS Padfone X mini Station Front Camera Replacement

How to replace a ASUS Padfone X mini Station front camera.

Written By: Nuri Syahirah Mohd Safian



INTRODUCTION

Is your device selfie camera failing to take photos? Probably it is time to get a new front camera. Use this manual to replace the front camera lens assembly.

TOOLS:

- [iFixit Opening Tools](#) (1)
 - [Tweezers](#) (1)
 - [Phillips #000 Screwdriver](#) (1)
 - [Phillips #00 Screwdriver](#) (1)
-

Step 1 — Front Camera Lens



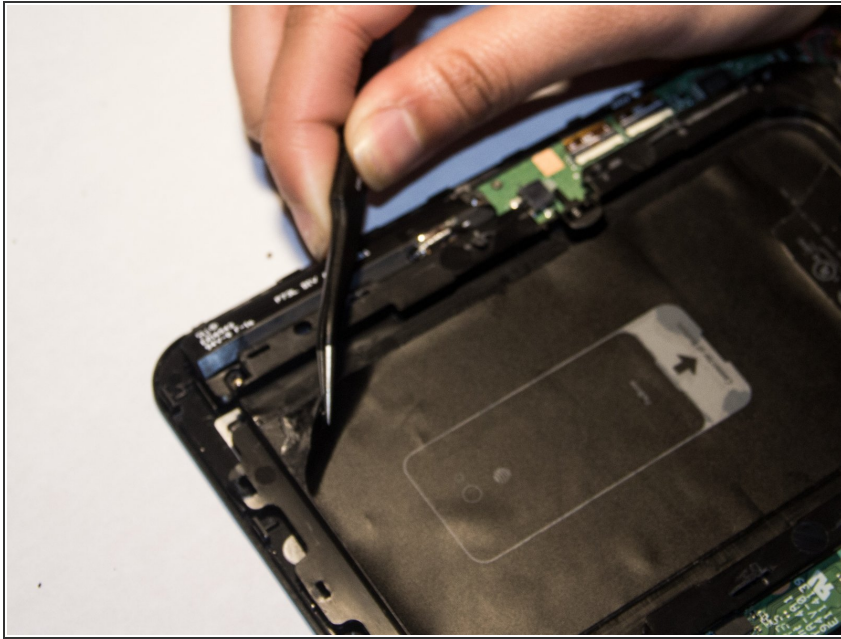
- Insert the plastic opening tool between the edge of the screen and the back cover.
- Gently pry them apart. Use hands to pull them apart if necessary.

Step 2



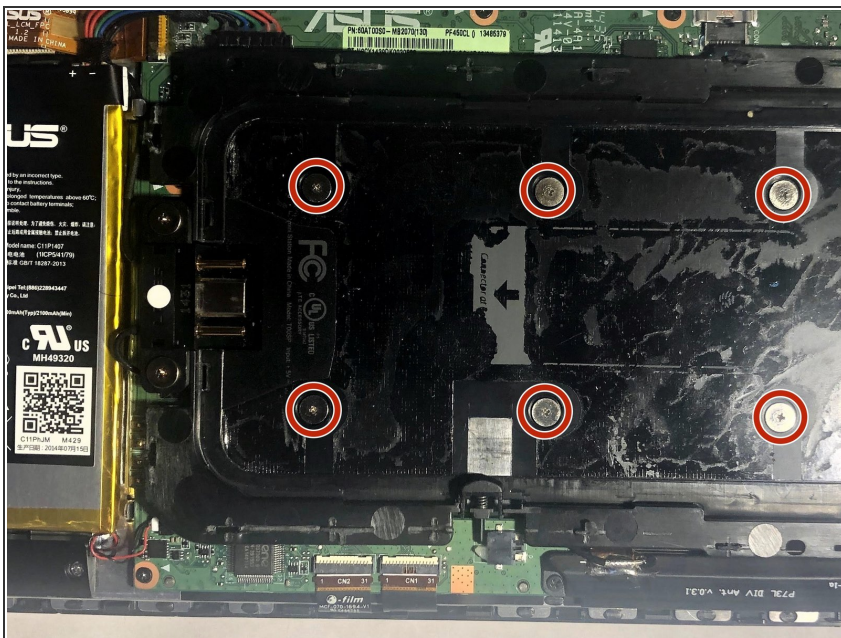
- Use a Phillips #00 screwdriver to remove the three 2.5mm screws that secure the speaker case to the motherboard.
- ① Remove all tape covering the screws before removing them.

Step 3



- Use tweezers to remove cover sticker on the dock station.

Step 4



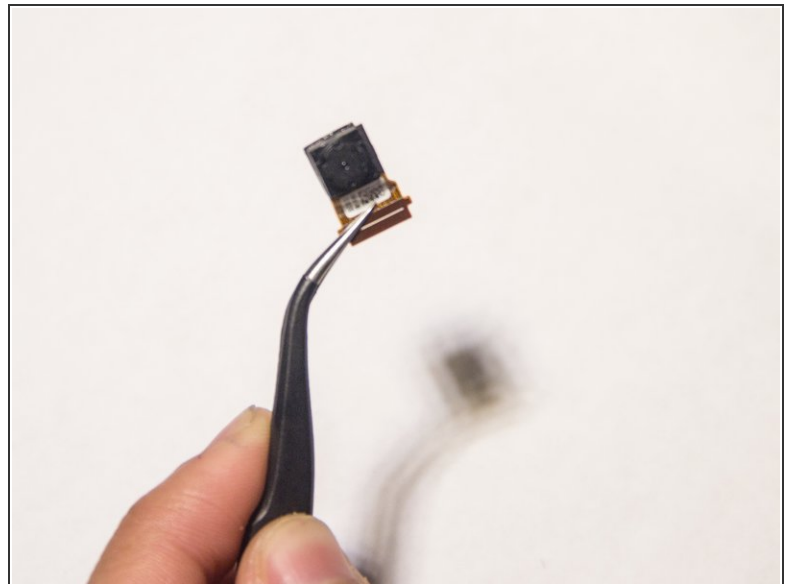
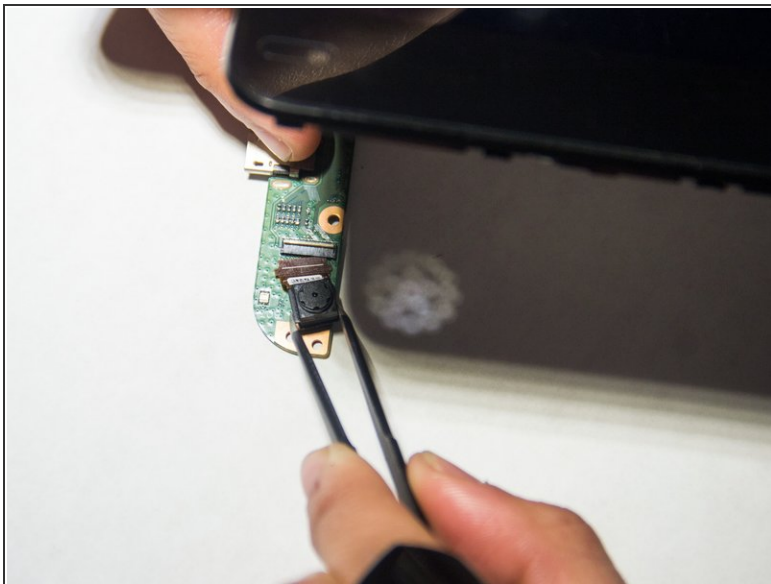
- Use a Phillips #000 screwdriver to remove the six 0.6mm screws that secure the dock station case to the motherboard.

Step 5



- Flip the device upwards.
 - Gently push the right side of motherboard down away from the dock station.
- ⚠ Do not push the motherboard so hard as it is still attached to a connector. Excessive force applied might cause external damage to it.

Step 6



- Use tweezers to detach the camera from the motherboard.

To reassemble your device, follow these instructions in reverse order.