



ExoPC Slate Back Cover and Shield Replacement

How to replace an ExoPC Slate back cover and shield.

Written By: Jonathon Cronin



INTRODUCTION

In order to get at the internal components the the back cover needs to be removed. The back cover housing the motherboard, battery, SSD, processor, fan, and other peripherals, such as the speakers , and USB ports.



TOOLS:

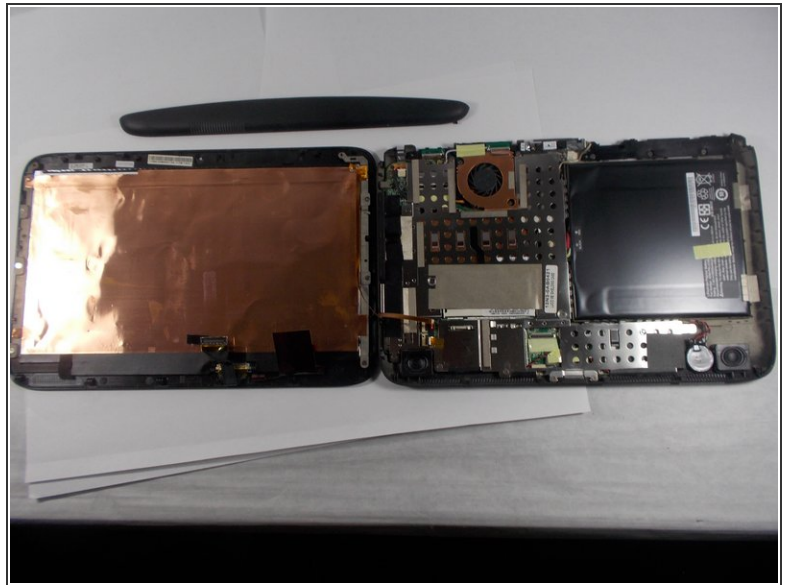
- [Phillips #00 Screwdriver](#) (1)
-

Step 1 — Back Cover and Shield



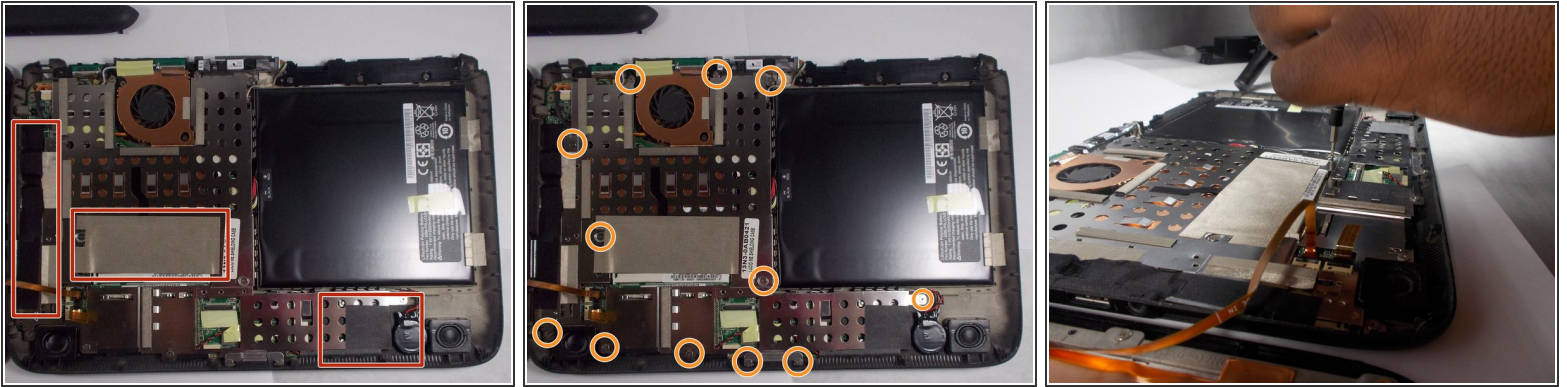
- Turn the PC on its back with the screen facing down and pull on the piece of plastic shown in the image. Use your fingernails to prod into the depression where the two plastic covers meet.

Step 2



- Using the 00 Phillips screwdriver remove the two screws in the corners.
 - Using your left hand pull at the exposed section of the PC while simultaneously pushing the right with the thumb of your other hand. This will release the plastic clips allowing back cover to slide off, as shown from the picture
- ⚠ When removing the back cover make sure that the ribbon connectors going to the screen are not damaged. Carefully fold over the cover like a book.

Step 3



- Remove the tape covering the metal shield.
- Remove the 12 screws using the Phillips #00 screwdriver.
- Dislodge the shield by pulling the prongs away from underneath the battery. The shield should come completely off.

To reassemble your device, follow these instructions in reverse order.