



# Lenovo Thinkpad Edge E545 Optical Drive Replacement

The following steps demonstrate how to replace...

Written By: John Metzger



# INTRODUCTION

The following steps demonstrate how to replace the optical drive in the Lenovo Thinkpad Edge E545.

The optical drive is what enables the reading of a disk such as a CD or DVD. When reading a CD or DVD, low quality sound or video definition could be a direct result of a failing optical drive. The complete failure of an optical drive results in an absolute inability to read the disk.

It is important to note that many signs pointing to a faulty optical drive could also be the result of a dirty one.

Prior to replacing the optical drive, as with most electronic repairs, be sure to power off the device completely and to unplug it from the charger.

---

## TOOLS:

Phillips #000 Screwdriver (1)

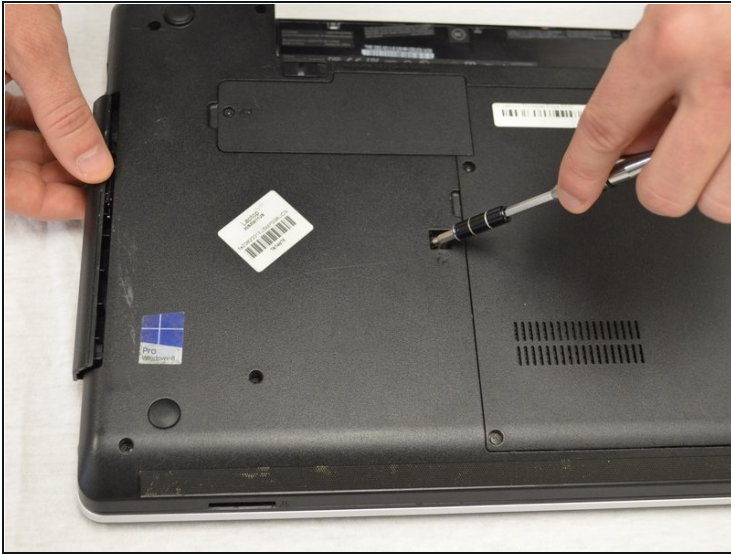
---

### Step 1 — Optical Drive



- Using the Phillips #000 screwdriver, remove the screw that holds the optical drive in place. It is found in a square indent close to the center of the back panel of the computer.

## Step 2



- Use the end of the screwdriver to assist in starting to slide the optical drive out.
- Put it into the hole where the screw was removed.
- Push towards the direction the optical drive slides out.
- Once it can be grabbed by hand, slide it out the rest of the way.

---

To reassemble your device, follow these instructions in reverse order.