



# Fujitsu LifeBook U810 Wireless LAN card Replacement

This guide shows how to replace the wireless LAN card in the Fujitsu Lifebook U810.

Written By: Anne Kutt



---

## INTRODUCTION

Replacing the wireless LAN card for the Fujitsu Lifebook U810 can be a simple process if directions are followed carefully. The only tool required is a Phillips head +J0 sized screwdriver to remove the Phillips screws on the back of the LifeBook. Replacing the wireless LAN card can improve the wireless network speed and solve connectivity issues. You can find a new wireless LAN card online by searching the model number and corresponding part for the U810 model.



### TOOLS:

- [Phillips #0 Screwdriver](#) (1)
-

## Step 1 — Wireless LAN card



- Remove back cover of the device by unscrewing the four 7mm screws with a Phillips #0 screwdriver.

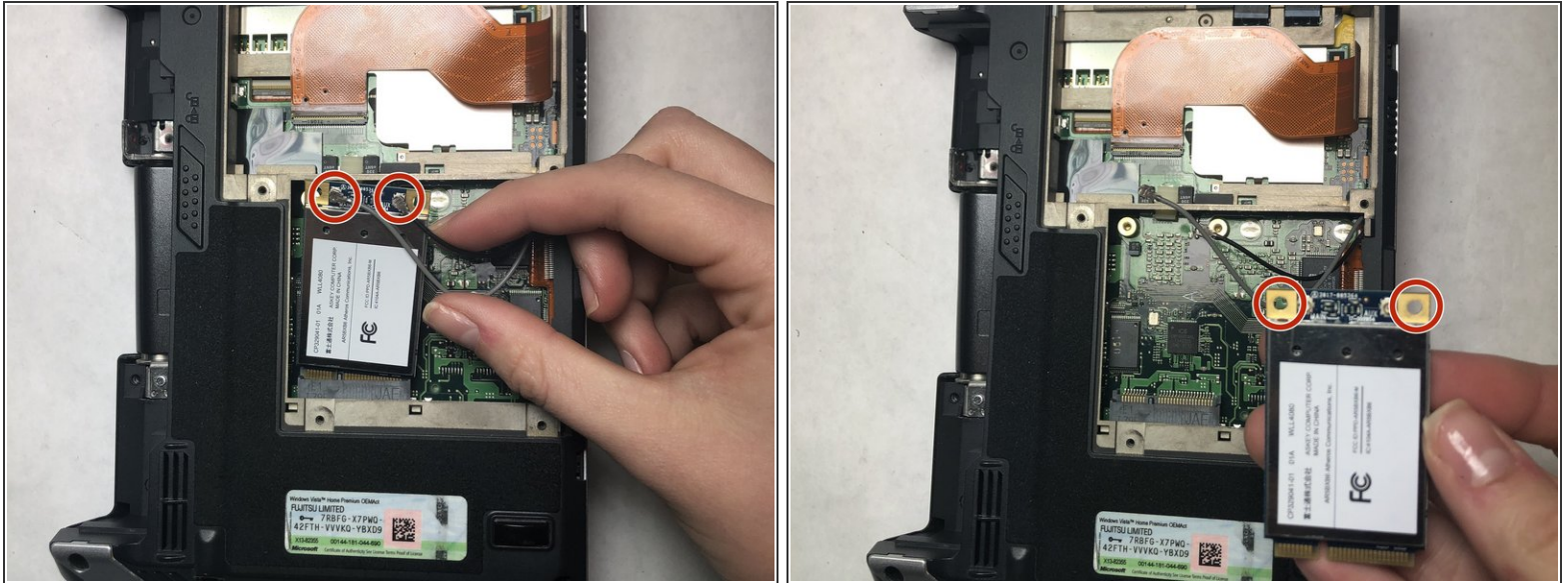
## Step 2



- Remove the two 5mm screws with a Phillips #0 screwdriver.
- Remove the wireless LAN card from the device.



## Step 3



- Detach the two antenna cables connected to the wireless LAN card by gently pulling them out of place.

To reassemble your device, follow these instructions in reverse order.