



Archived

Nintendo Switch Joy-con Control Stick Replacement

This guide will teach you step-by-step...

Written By: Devnol



INTRODUCTION

This guide will teach you step-by-step instructions to

replace the joystick of a Joy-con. In this guide, the Joy-con(R) will be shown but the process is almost the same as the left one. **Make sure that you have turned off your console to ensure there are no accidental connections**

TOOLS:


[Tri-point Y00 Screwdriver](#) (1)
[Spudger](#) (1)
[ESD Safe Blunt Nose Tweezers](#) (1)
[Phillips PH000 Screwdriver](#) (1)

PARTS:

[Nintendo Switch Joy-Con/Switch Lite - Gulikit Hall Effect Joystick](#) (1)
[Nintendo Switch Joy-Con/Switch Lite Joystick](#) (1)

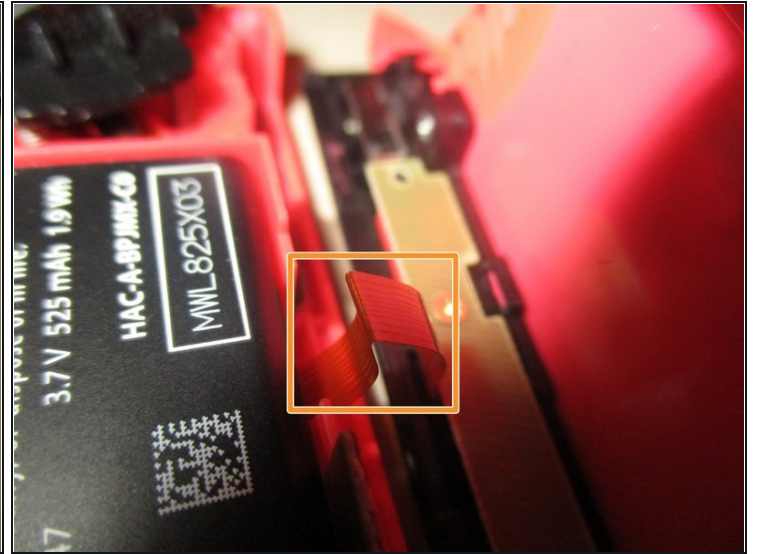
Step 1 — Unscrewing the Joy-con



 Remember to turn off your console before you start repairing to avoid accidental connections with it.

- First, start by removing these 4 Y00 screws on the back of the joy con.

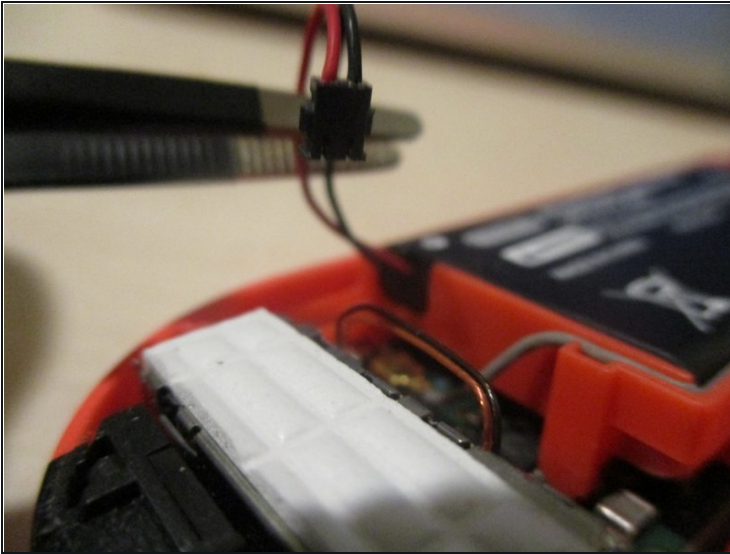
Step 2 — Opening the cover



- Insert the flat side of a spudger on the curved side to pry the back cover open

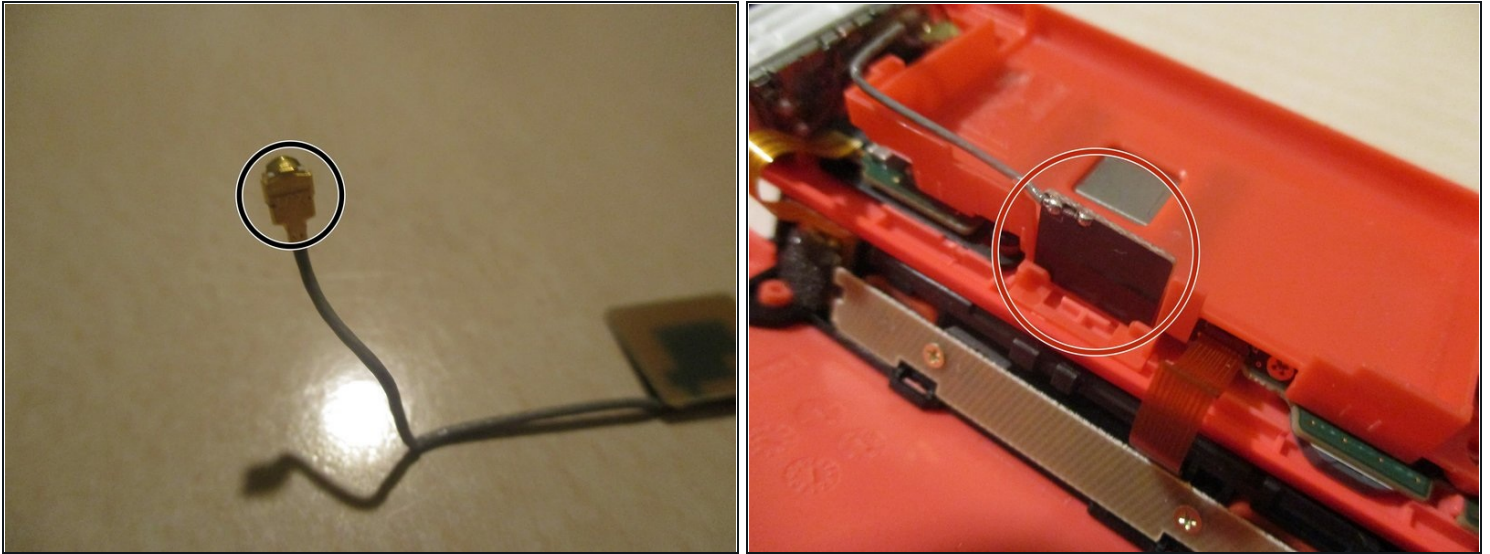
⚠ Be very careful though, because there are two ribbon cables for the charging port and the SL/SR buttons!

Step 3 — Disconnecting the battery



- ① To avoid damaging components, remove the battery from the controller.
- ① Please note that the connector is pulled out vertically and not sideways as a zif connector does.
- Pull the battery connector with your tweezers from the bottom carefully.
- Remove the battery by inserting the flat side of your spudger.
- ① The battery is stuck to its frame with light adhesive.

Step 4 — Removing the Bluetooth antenna



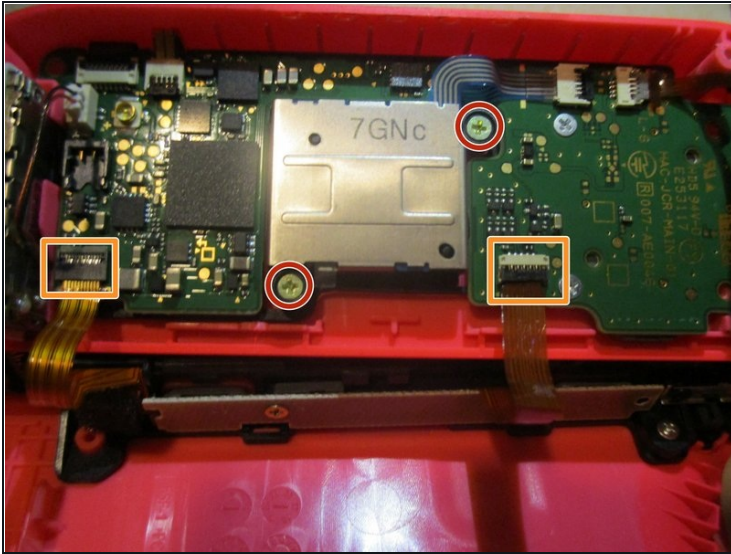
- Pull the golden SMP RF connector that connects the Bt antenna with the main board.
- remove the square antenna from the side of the battery compartment.

Step 5 — Removing the battery compartment.



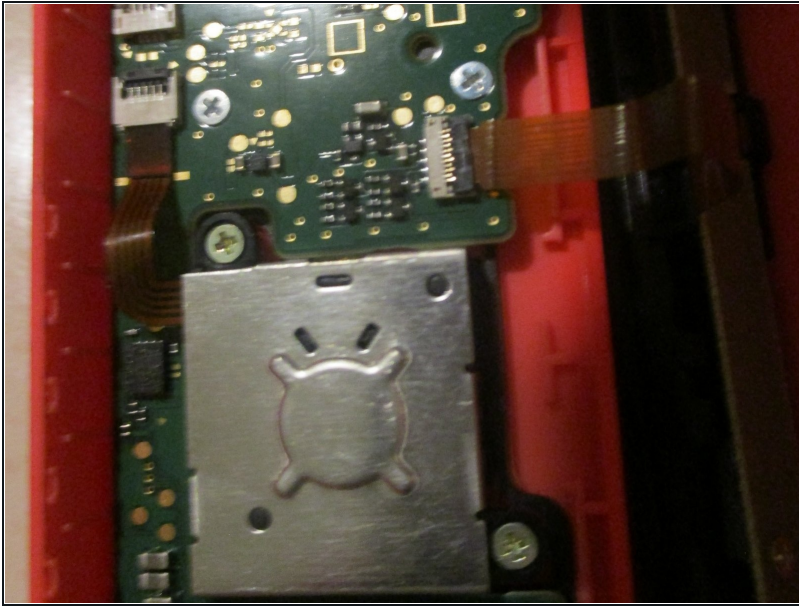
- remove the ZR button and its springs. Be careful not to break the clips holding it in place.
- unscrew the four PH000 screws holding the battery compartment and the ZR button board. There is one hidden on the side of the hd rumble module.
- ① The screw of the ZR button board is shorter than the others. Keep that in mind if you are sorting the screws using a [magnetic project mat](#) or the cover of a [Mako driver kit](#)
- Pick up the battery compartment.

Step 6 — Removing the joystick



- Unscrew the two PH000 screws holding the joystick down.
- Make sure to NOT disconnect the two side board cables. It may cause fatal damage to the controller.
- Before you remove the joystick, remove the secured ribbon cable by opening the clip using the tip of a spudger.
- ① Note that there is a small gasket below the joystick and that it has to be re-seated in place before inserting the new joystick.

Step 7 — Adding the new joystick



- to add the new joystick, push it in firmly and make sure it has fully gone through the gasket I mentioned above.
- Screw it in and put the ribbon cable in its socket. Don't forget to lock the cable in place.

To reassemble your Joy-con, follow these instructions in reverse order.