



# Toshiba HD-A2 Drive Belt Replacement

Replace the drive belt if your disc tray won't slide out.

Written By: Nouriyah Saleh



---

## INTRODUCTION

If the disc tray won't slide out and the open button is properly working, use this guide to remove and replace the drive belt.

---



### TOOLS:

- [Phillips #2 Screwdriver](#) (1)
  - [Phillips #1 Screwdriver](#) (1)
-

## Step 1 — Top Panel



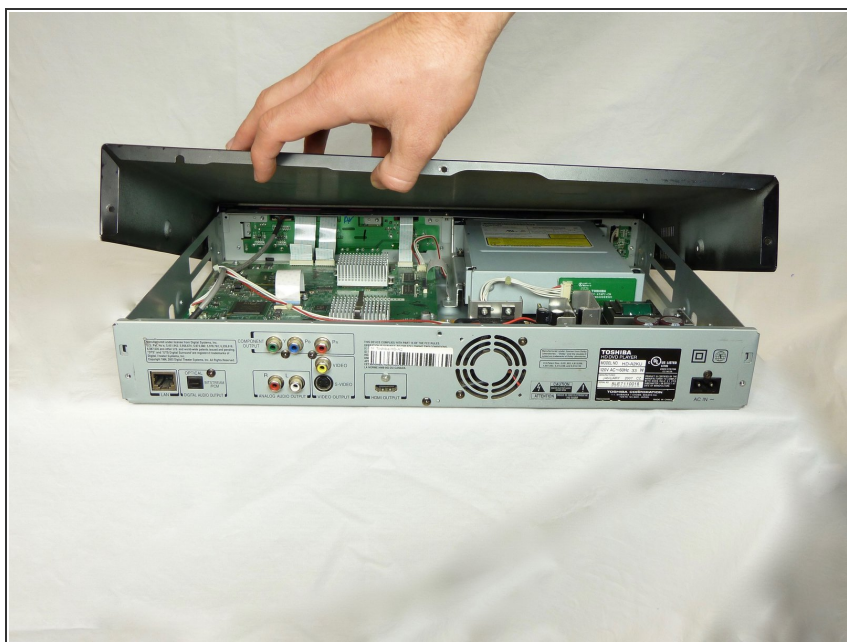
- Remove the three 6mm Phillips head screws on the back of the DVD player with a Phillips #1 screwdriver.

## Step 2



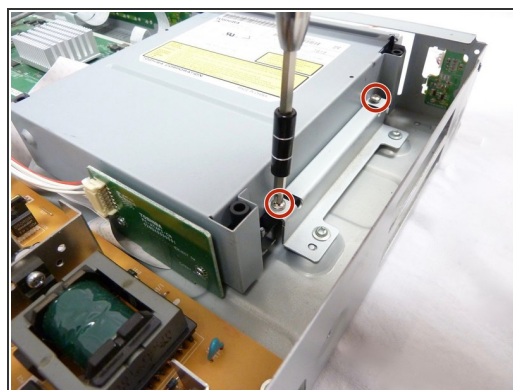
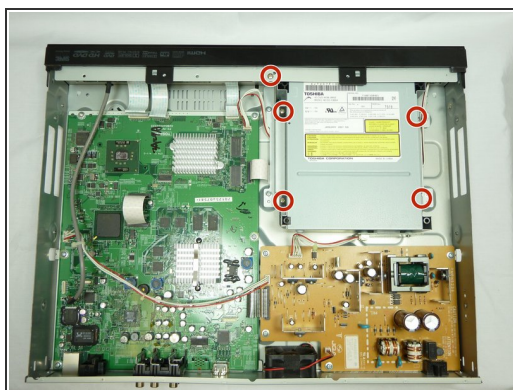
- Remove the two 3mm Phillips screws on each side of the DVD player using the Phillips #1 screwdriver.

## Step 3



- Using your hand, gently lift the black top panel and safely place it off to the side.

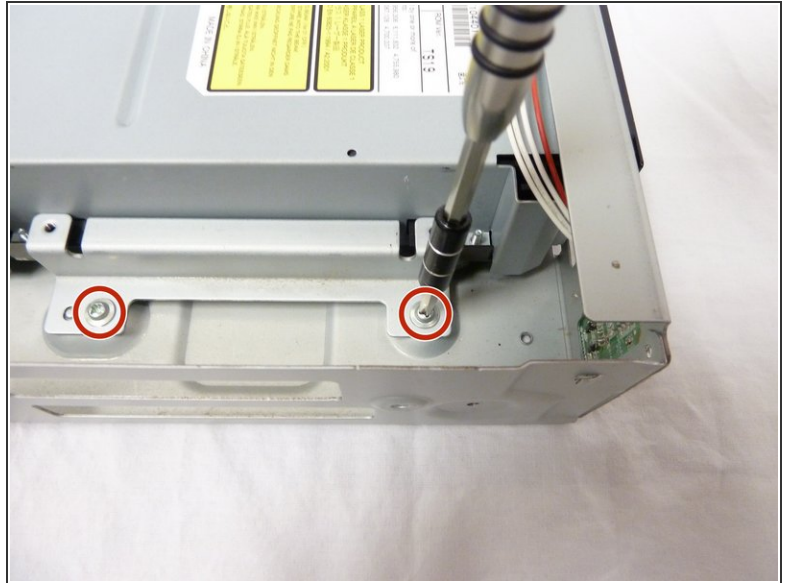
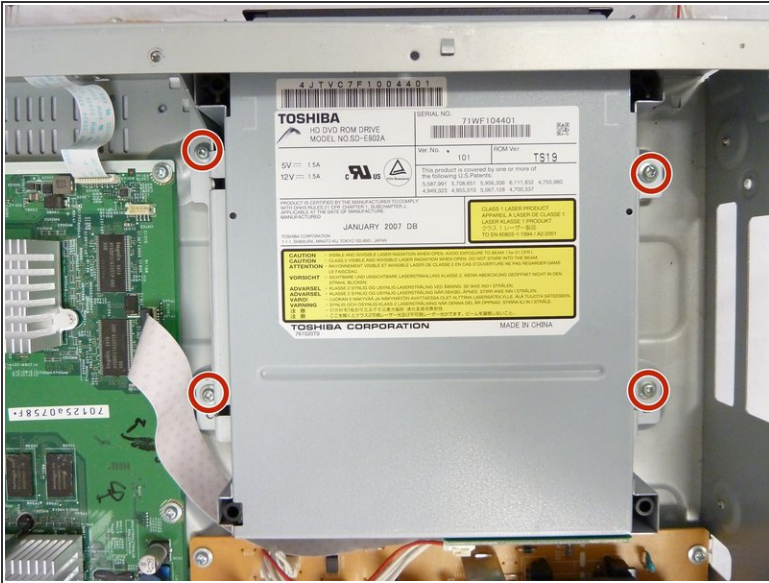
## Step 4 — Optical Drive



- Remove five 6mm Phillips screws with a Phillips #2 screwdriver.
- ☞ The 2 screws on the right of the cartridge are better shown in the second and third photos.

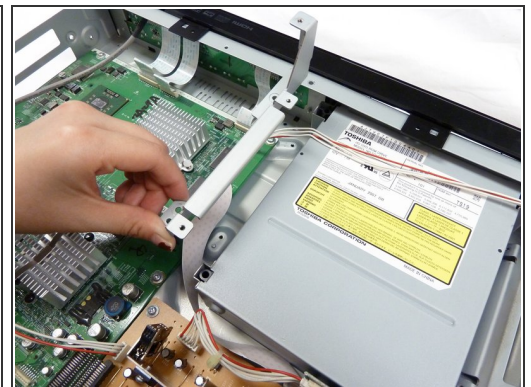
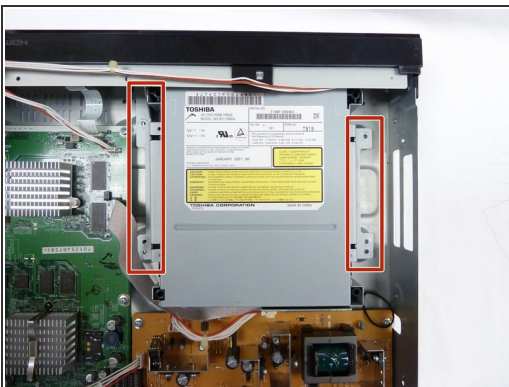


## Step 5



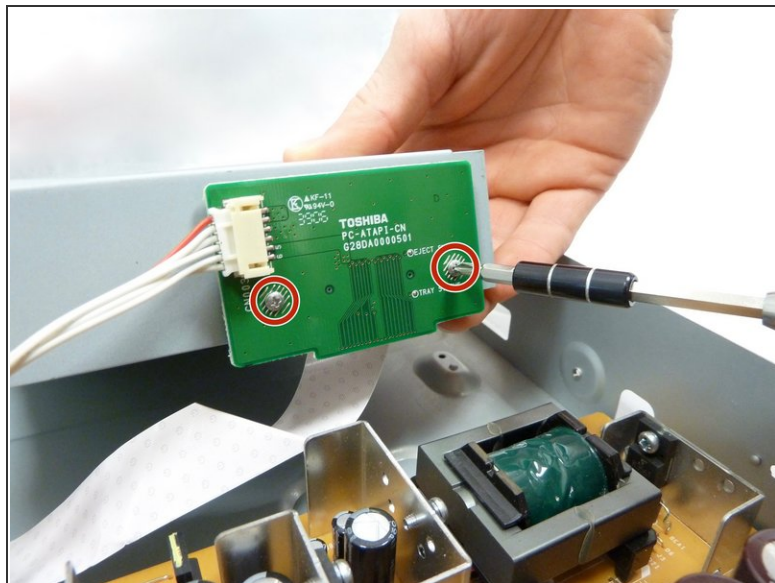
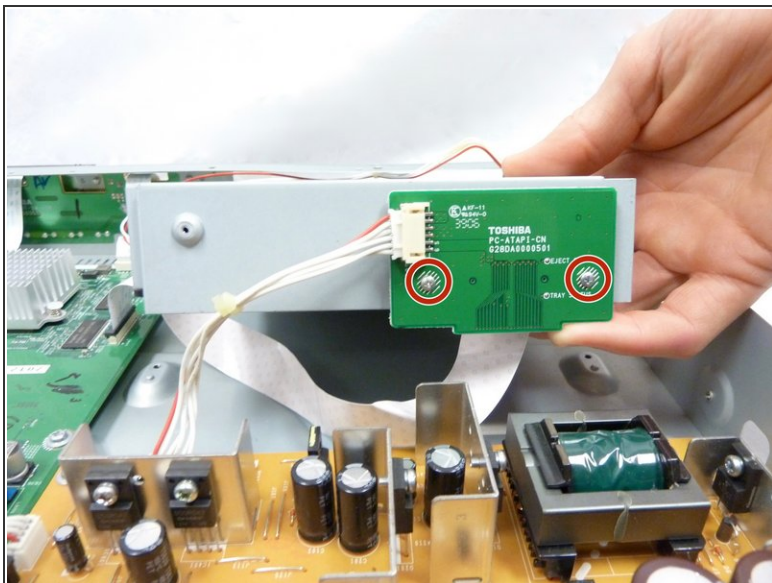
- Remove the remaining four 6mm Phillips screws.

## Step 6



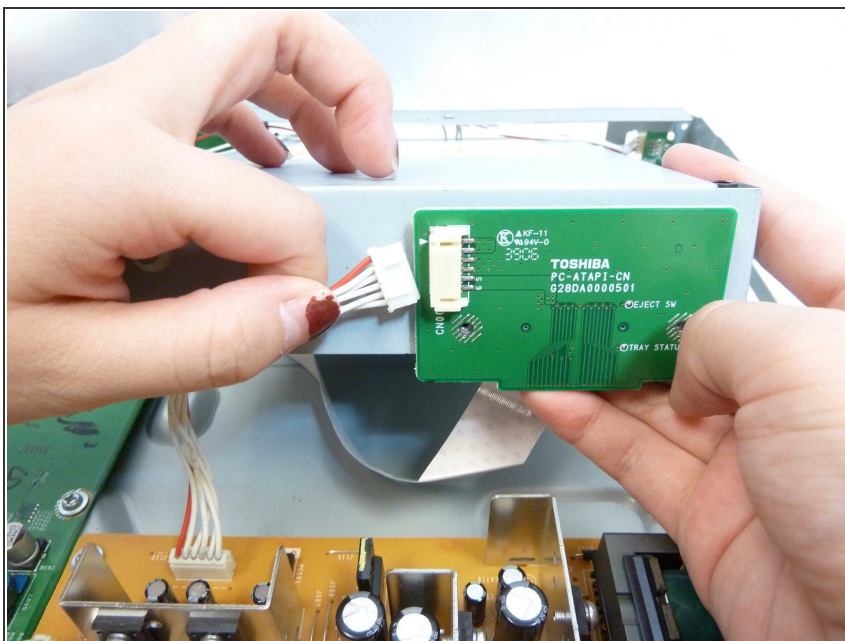
- Using your fingers, gently remove the metal pieces on each side of the cartridge and carefully place them aside.

## Step 7



- Gently lift the cartridge. Remove two 4mm Phillips screws from the green circuit board.

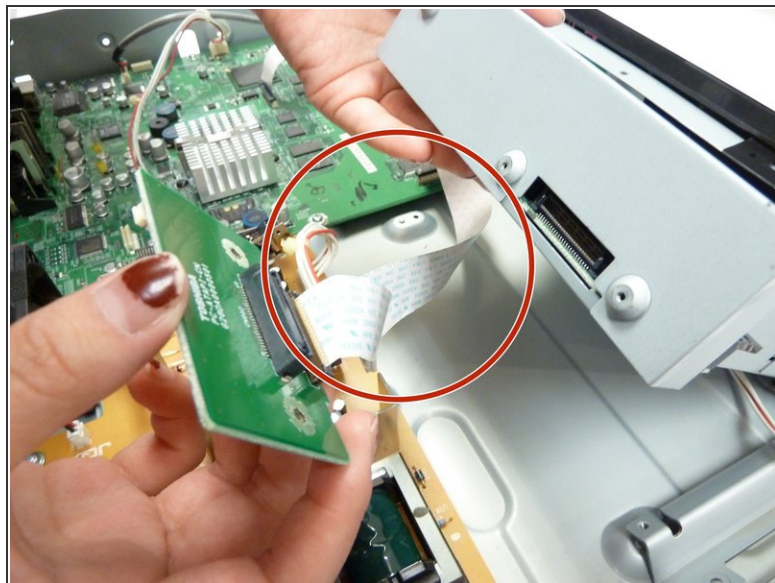
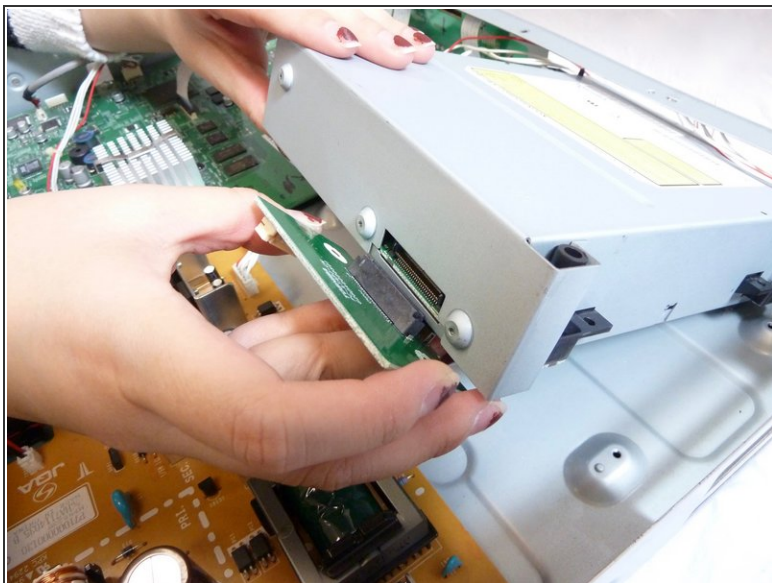
## Step 8



- Using your fingers, gently pull off the wires.



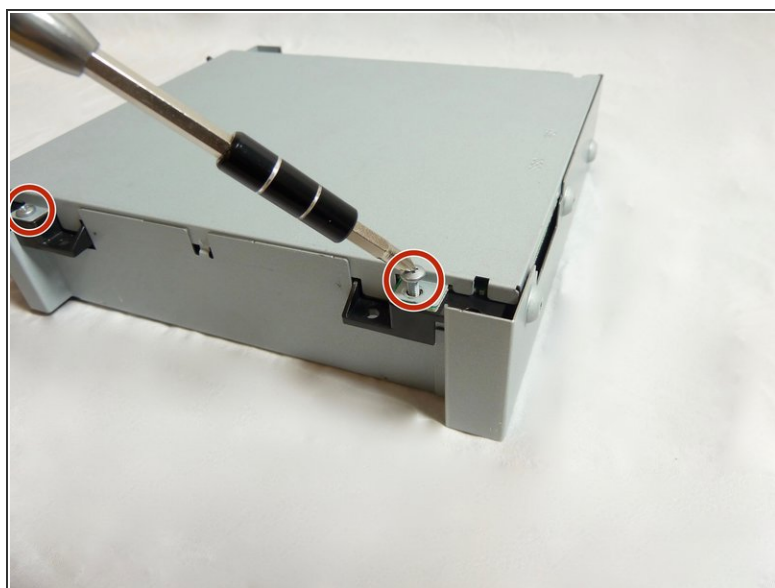
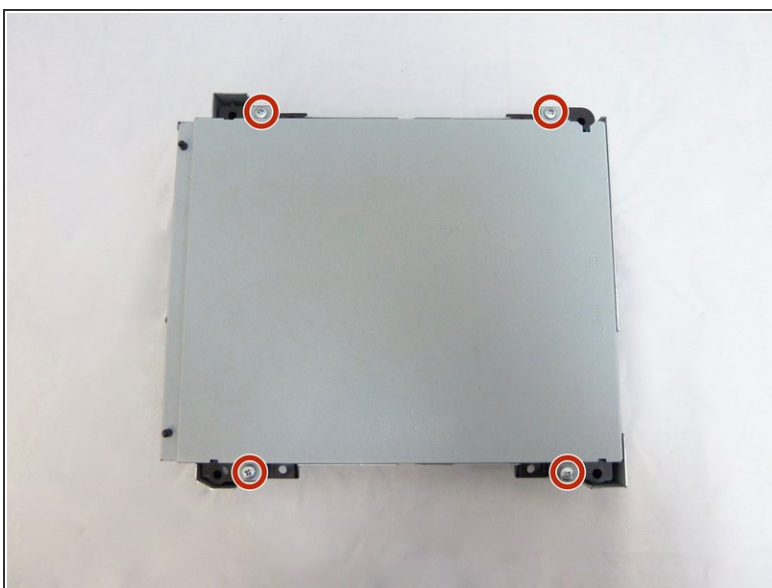
## Step 9



- Using your fingers, pull off the green circuit board from the cartridge and carefully place it down.

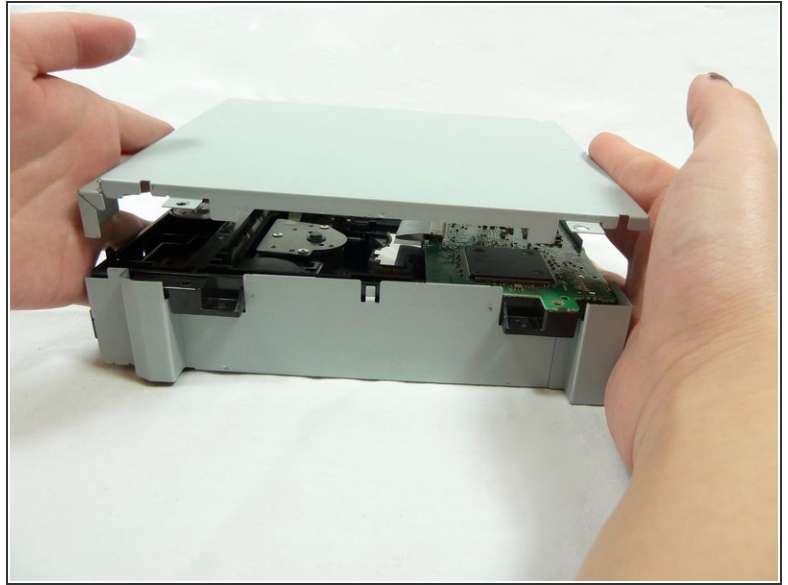
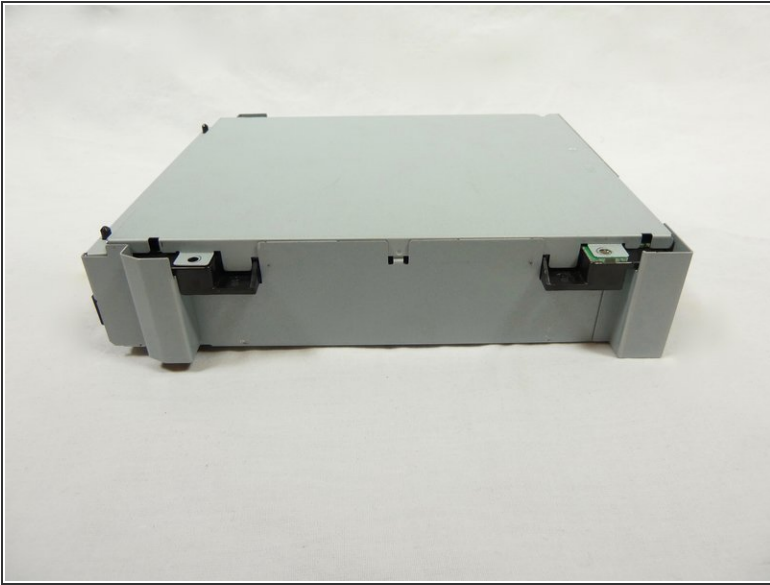
⚠ Be careful not to rip the tape attaching the green circuit boards together.

## Step 10



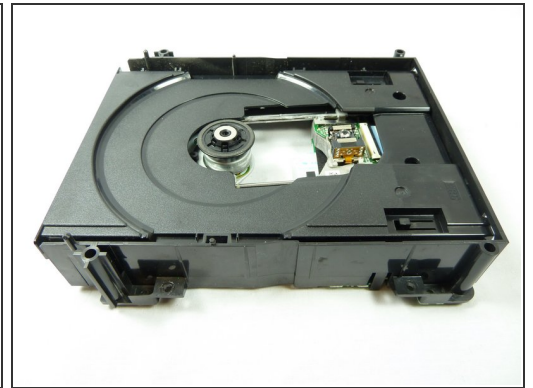
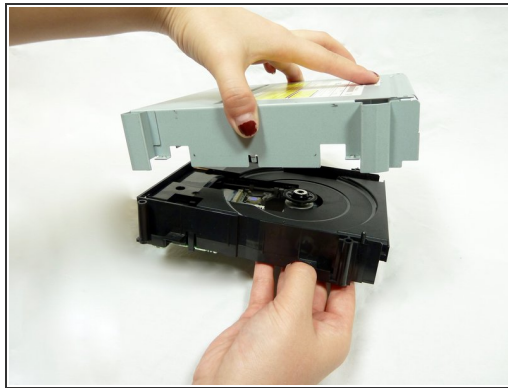
- Flip the cartridge over to the bare side with no stickers. Remove four 10mm Phillips screws from each corner.

## Step 11



- Using your hands, gently lift the lid and carefully place it aside.

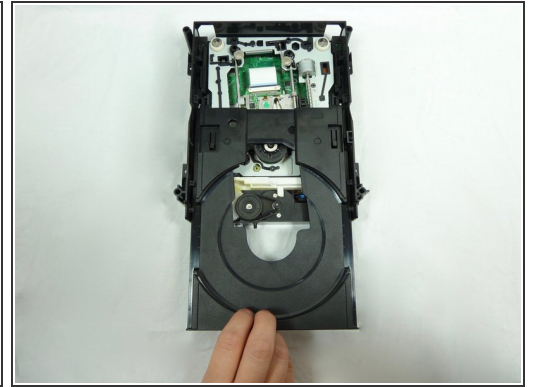
## Step 12



- Flip over the cartridge. Using your hands, gently lift the rest of the silver case.

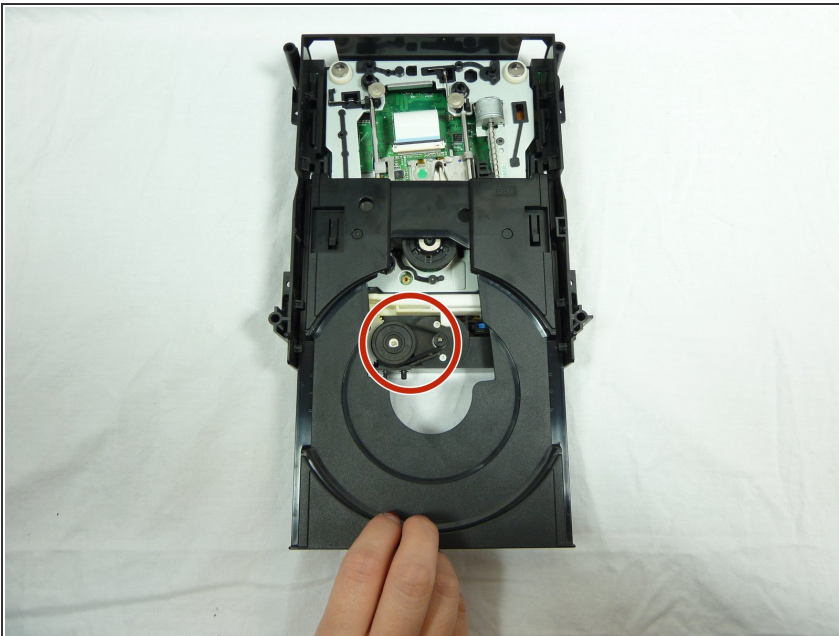


## Step 13 — Drive Belt



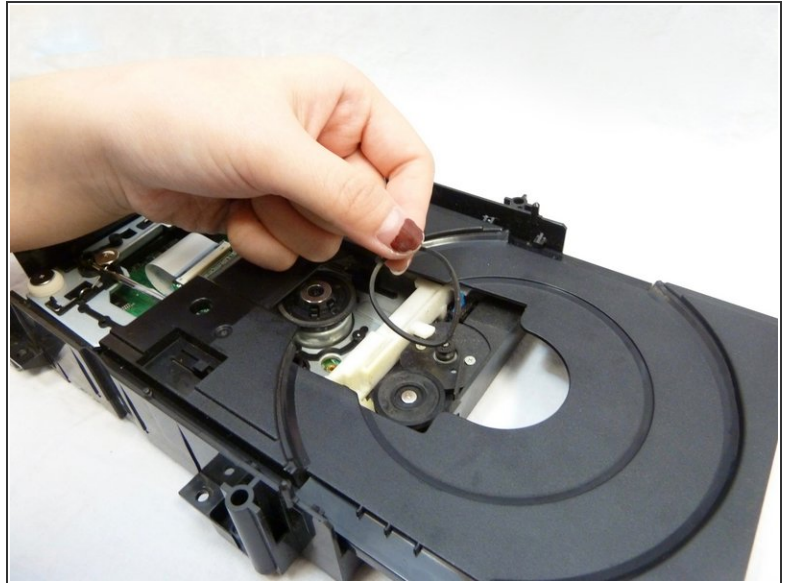
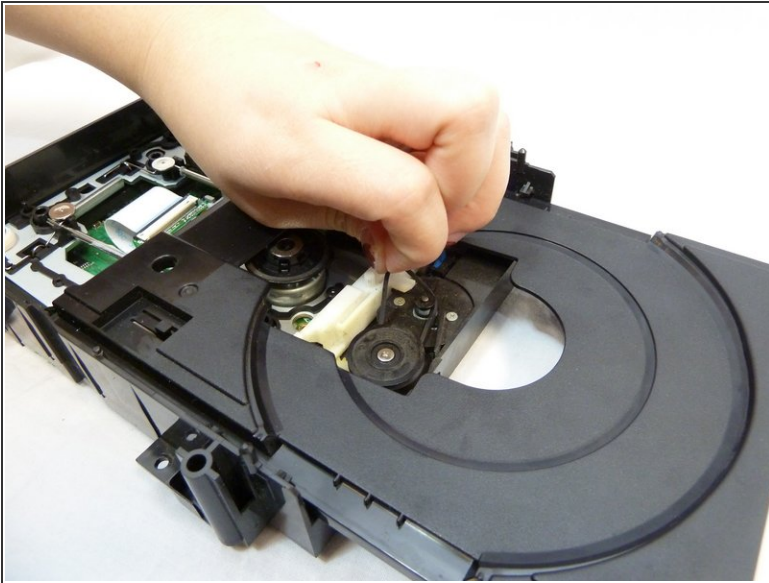
- Slide out the disc tray. If it's stuck, turn the white gear to the right to release the tray.

## Step 14



- The drive belt is the black rubber band.

## Step 15



- Using your fingers, gently remove the drive belt.
- ⓘ If you have difficulty using your fingers, use a prying tool.

To reassemble your device, follow these instructions in reverse order.