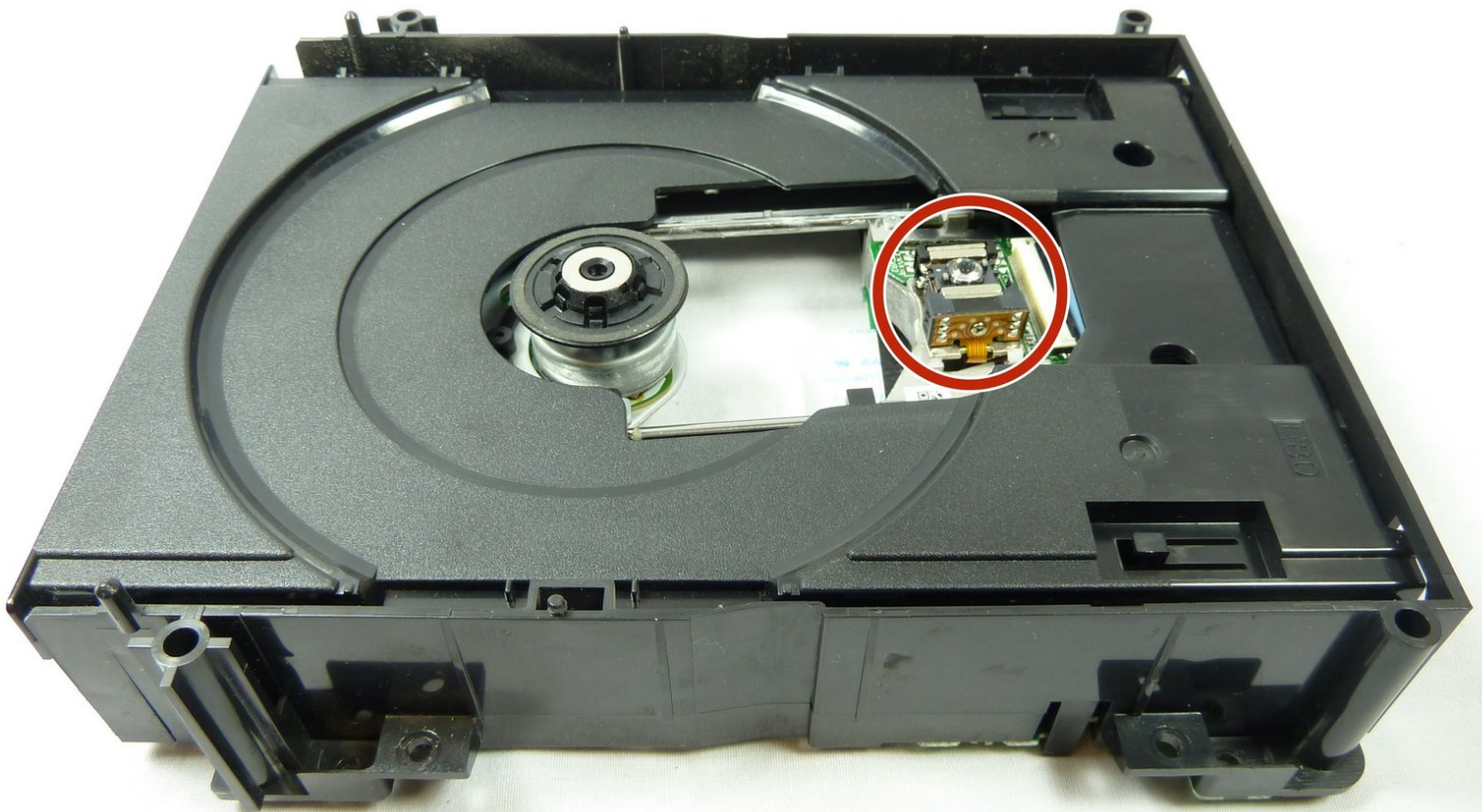




Toshiba HD-A2 Optical Lens Replacement

Use this guide to replace the optical lens in your Toshiba HD-A2.

Written By: Nouriyah Saleh



INTRODUCTION

If you find that your disc isn't reading despite no scratches, use this guide to remove and replace the optical lens.



TOOLS:

- [Phillips #1 Screwdriver](#) (1)
 - [Phillips #2 Screwdriver](#) (1)
 - [iFixit Opening Tools](#) (1)
-

Step 1 — Top Panel



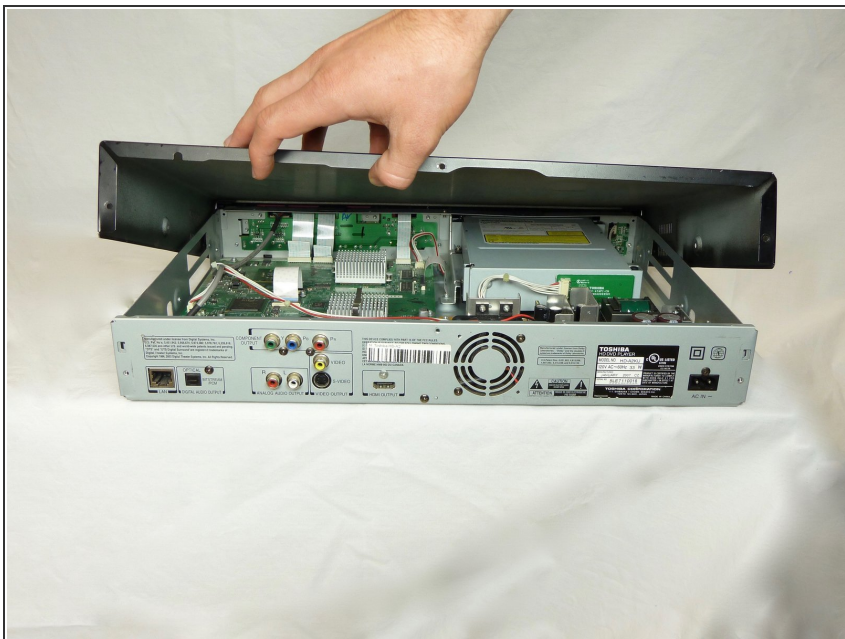
- Remove the three 6mm Phillips head screws on the back of the DVD player with a Phillips #1 screwdriver.

Step 2



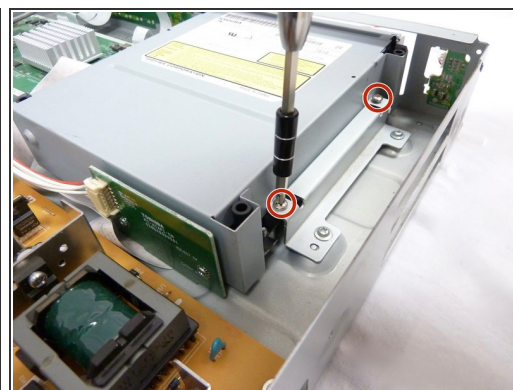
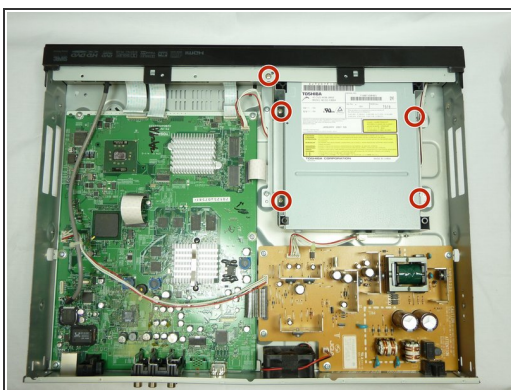
- Remove the two 3mm Phillips screws on each side of the DVD player using the Phillips #1 screwdriver.

Step 3



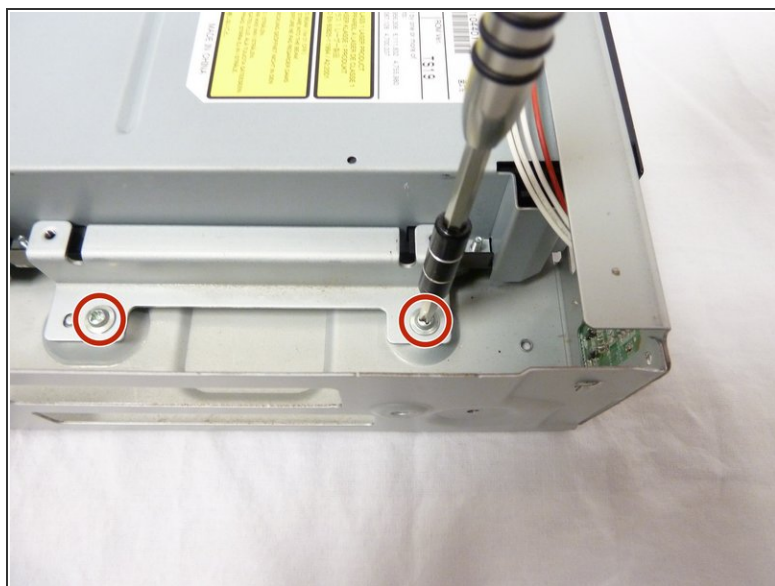
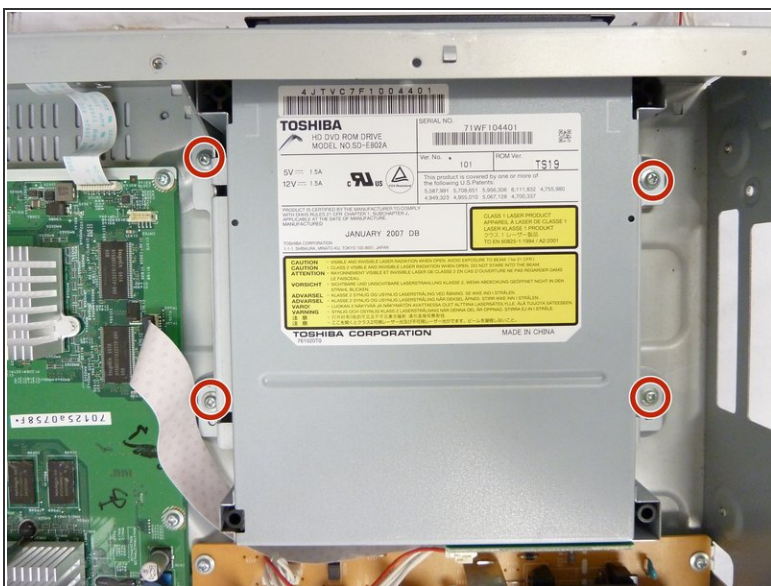
- Using your hand, gently lift the black top panel and safely place it off to the side.

Step 4 — Optical Drive



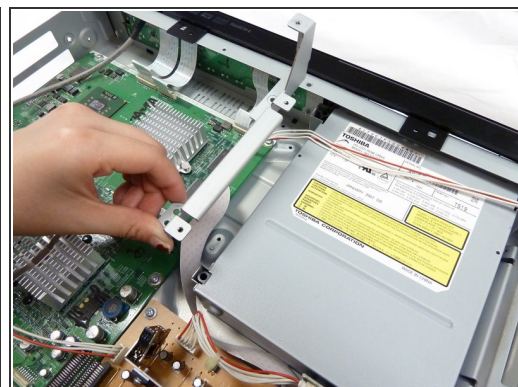
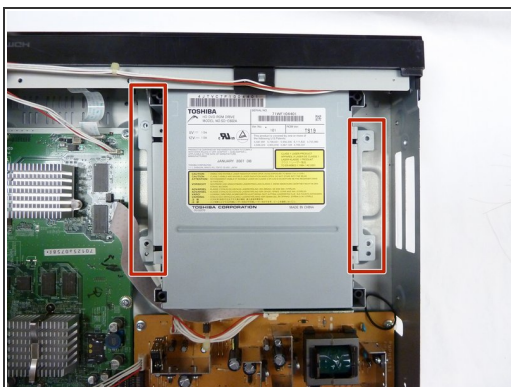
- Remove five 6mm Phillips screws with a Phillips #2 screwdriver.
- ☛ The 2 screws on the right of the cartridge are better shown in the second and third photos.

Step 5



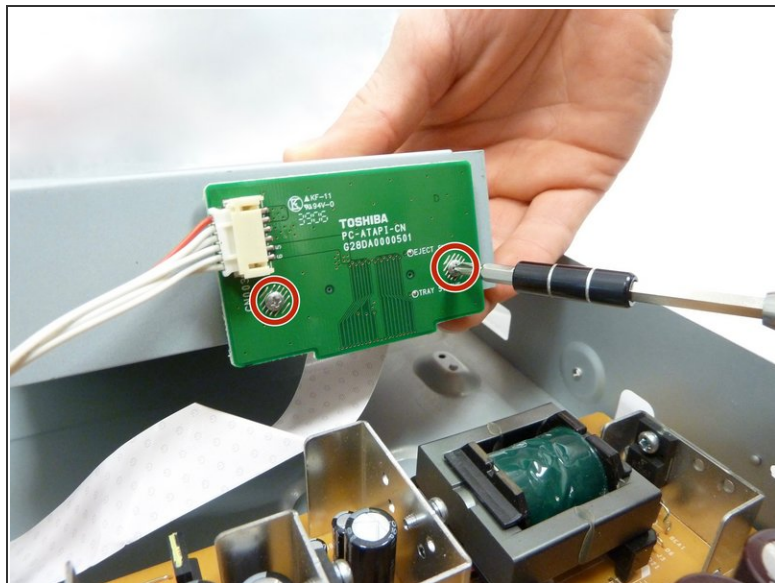
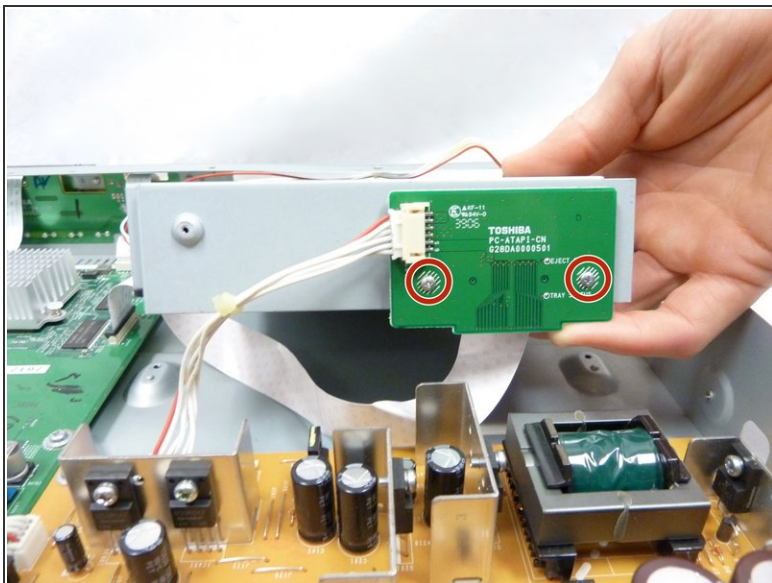
- Remove the remaining four 6mm Phillips screws.

Step 6



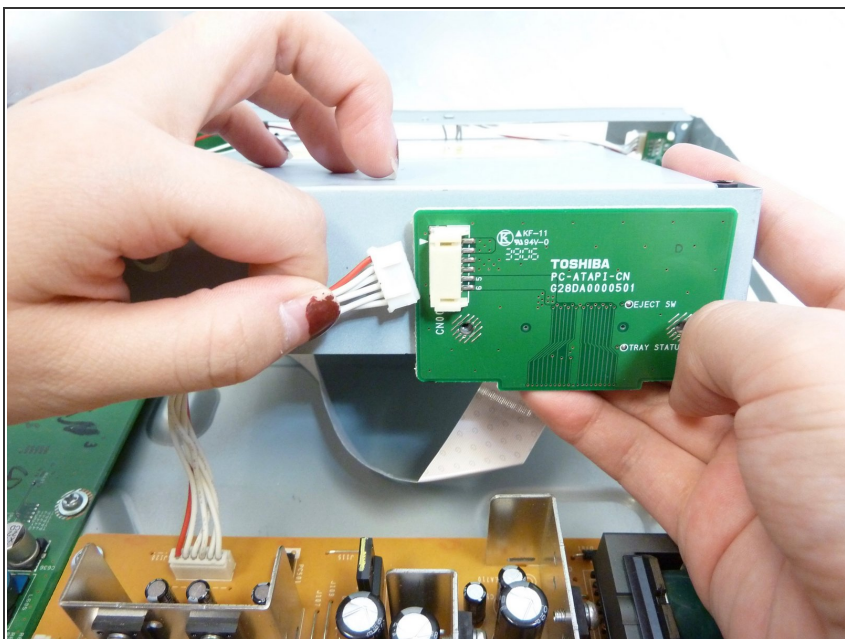
- Using your fingers, gently remove the metal pieces on each side of the cartridge and carefully place them aside.

Step 7



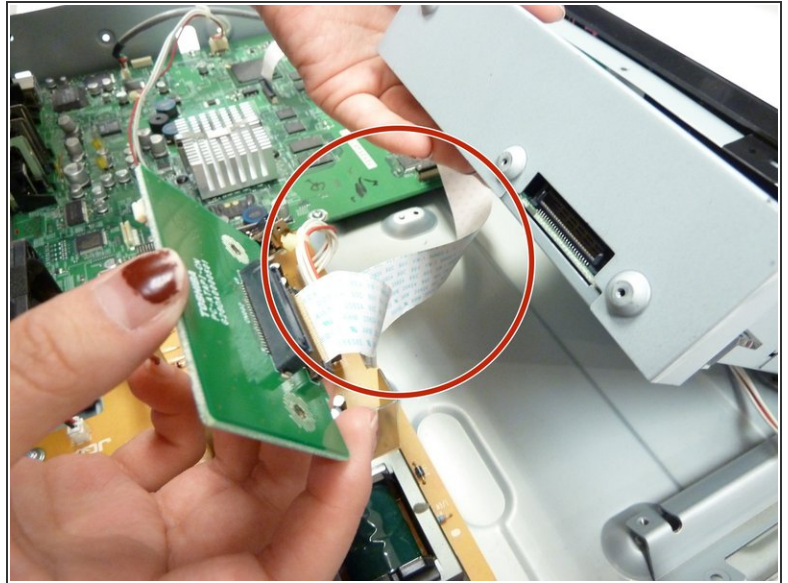
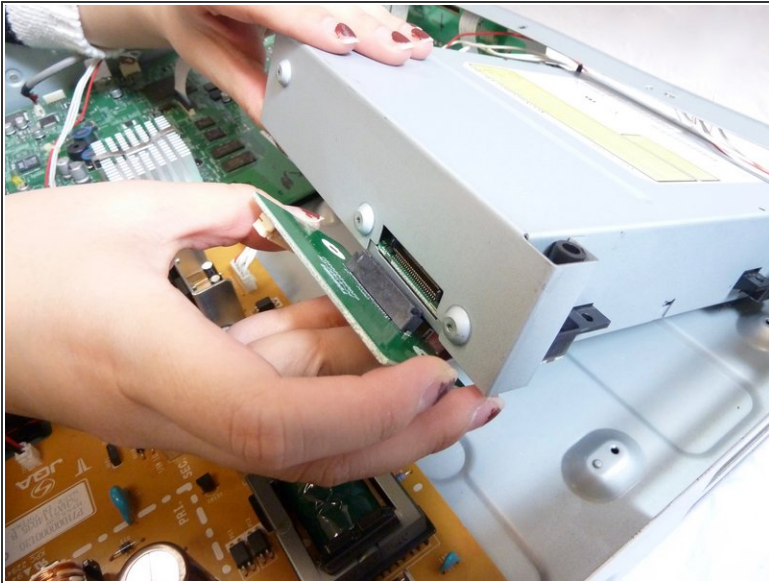
- Gently lift the cartridge. Remove two 4mm Phillips screws from the green circuit board.

Step 8



- Using your fingers, gently pull off the wires.

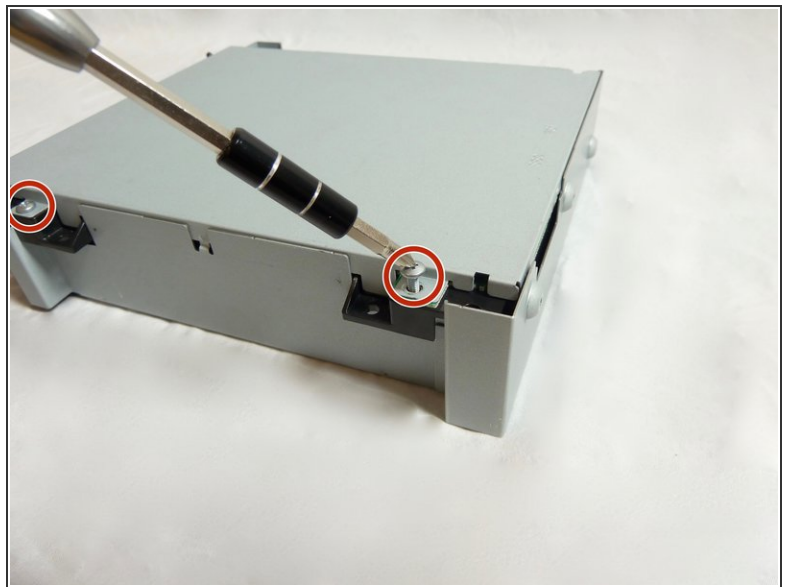
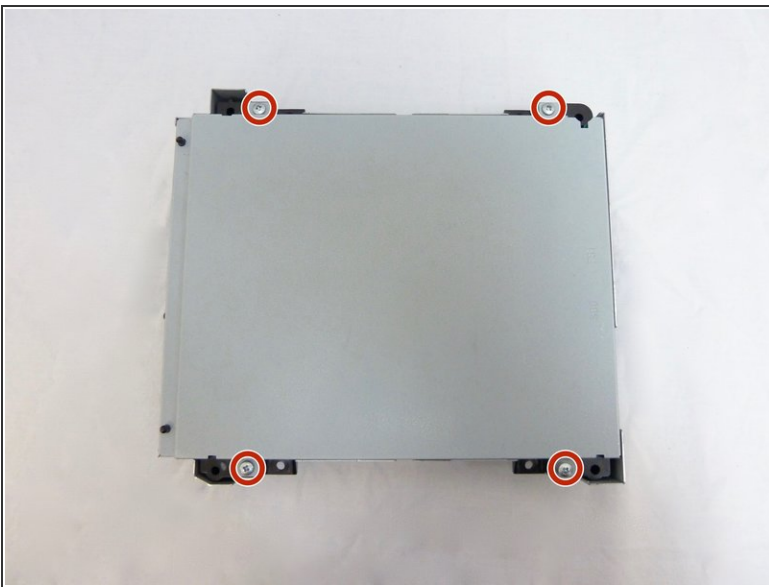
Step 9



- Using your fingers, pull off the green circuit board from the cartridge and carefully place it down.

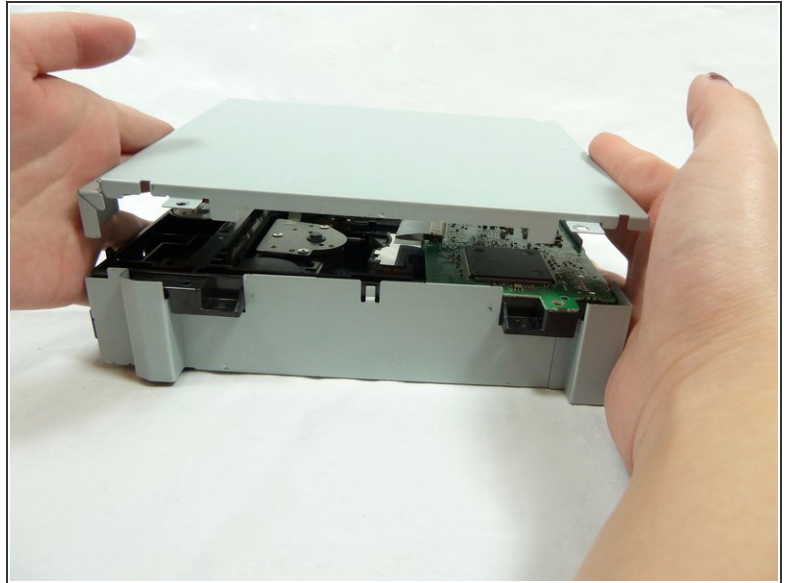
⚠ Be careful not to rip the tape attaching the green circuit boards together.

Step 10



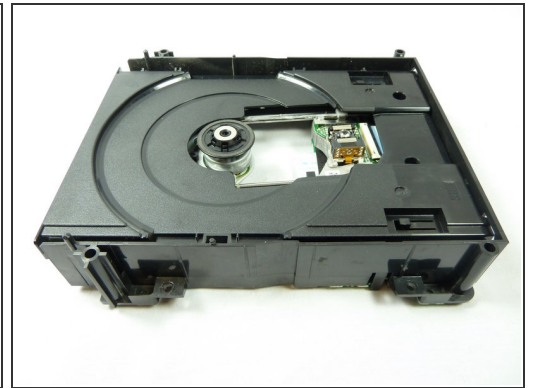
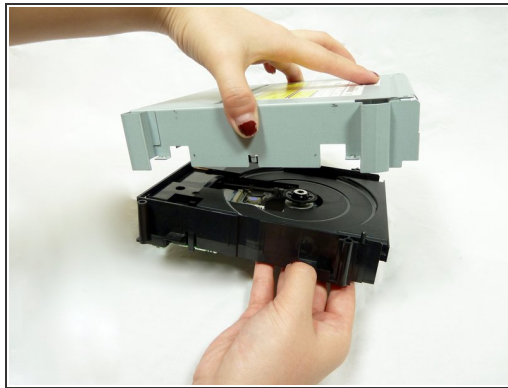
- Flip the cartridge over to the bare side with no stickers. Remove four 10mm Phillips screws from each corner.

Step 11



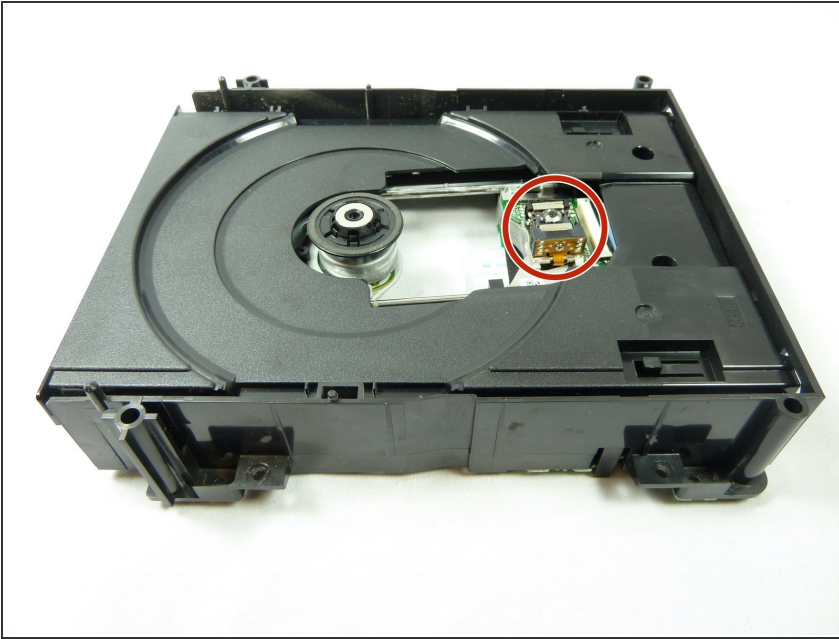
- Using your hands, gently lift the lid and carefully place it aside.

Step 12



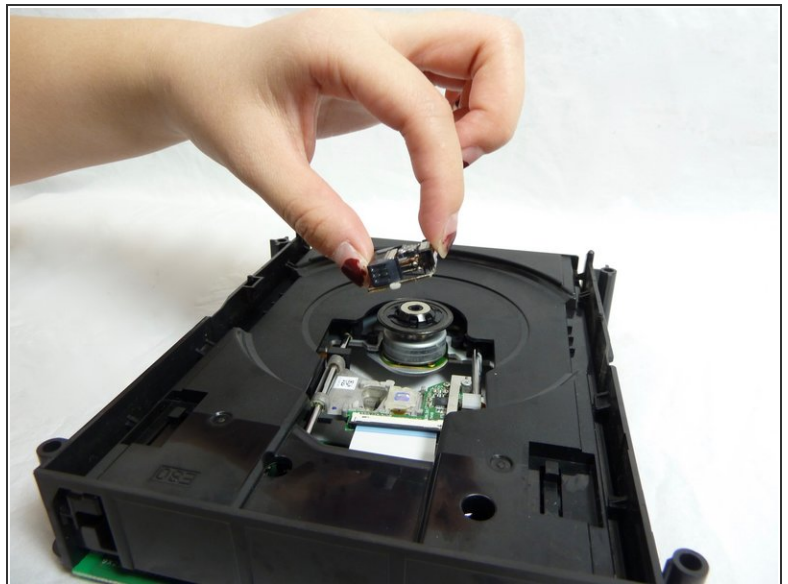
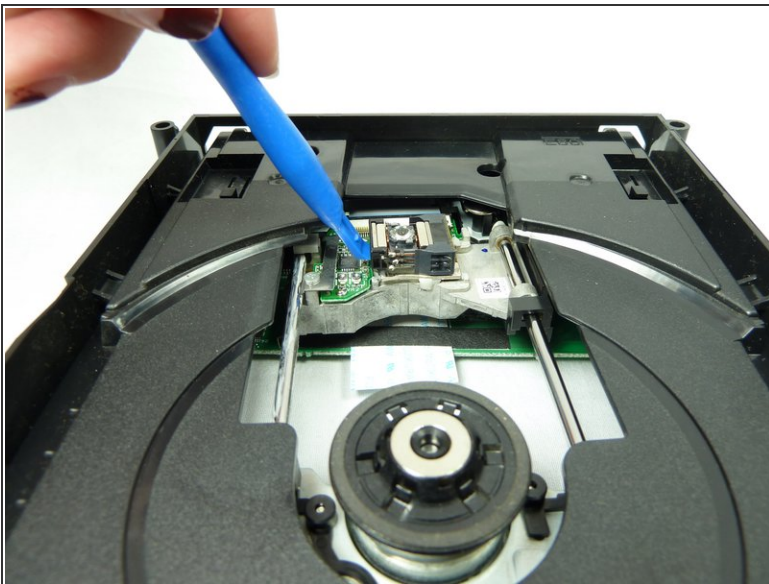
- Flip over the cartridge. Using your hands, gently lift the rest of the silver case.

Step 13 — Optical Lens



- The optical lens will be resting aside the small green circuit board.

Step 14



- Using a prying tool, wedge the edge of the tool underneath the end of the optical lens closest to the green circuit board. Gently push down to pop off the optical lens.

To reassemble your device, follow these instructions in reverse order.

This document was generated on 2020-11-28 07:11:08 AM (MST).

