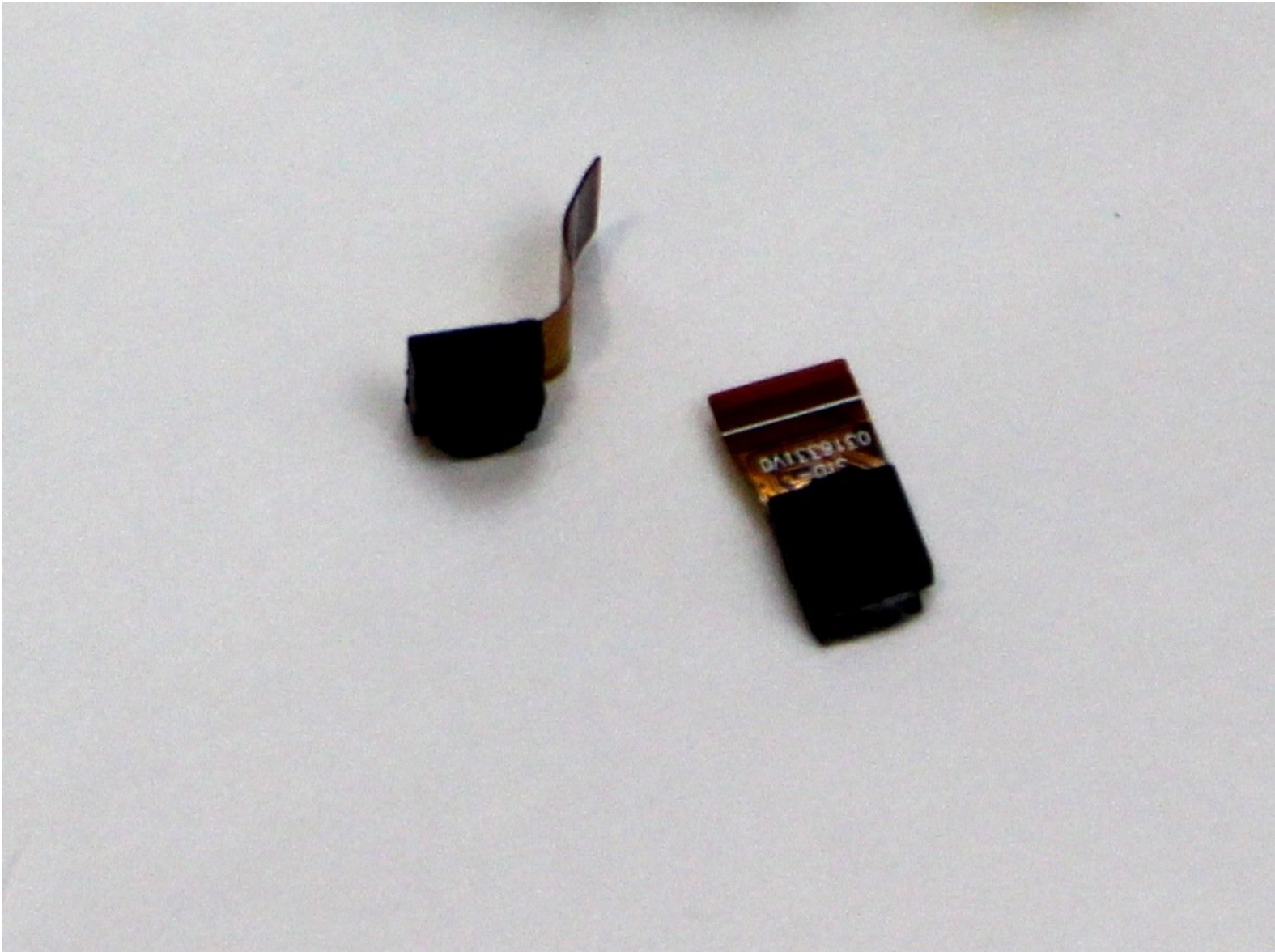




VTech Kidizoom Smartwatch DX2 Camera Replacement

Use this guide to replace the camera on your VTech Kidizoom Smartwatch DX2.

Written By: Nathaniel Cady



INTRODUCTION

If one of the cameras on your device is broken, cracked, or damaged in any way, the following guide will show you how to replace the camera.



TOOLS:

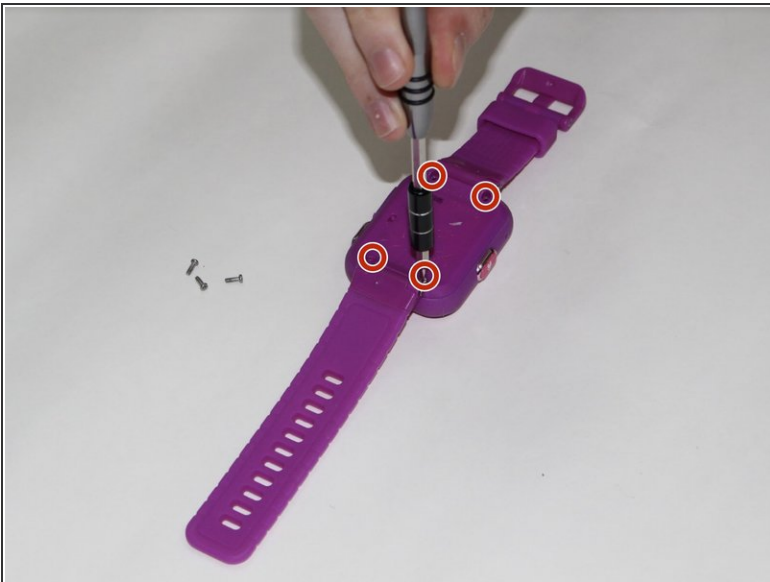
- [Phillips #00 Screwdriver](#) (1)
 - [Tweezers](#) (1)
-

Step 1 — Master Switch



- Begin by flipping the watch over with its back facing upwards.

Step 2



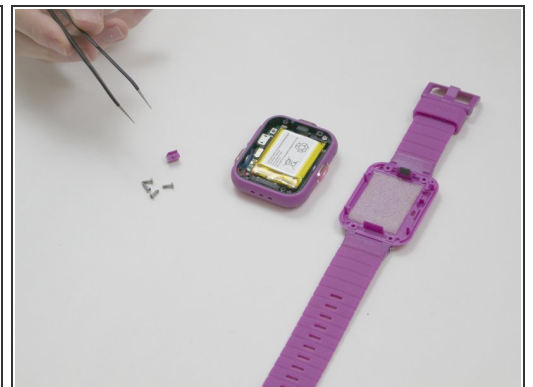
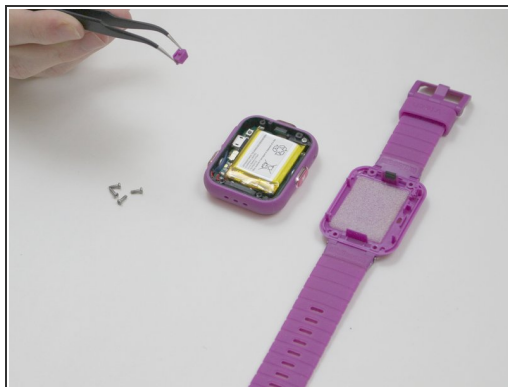
- Next, use the Phillips #00 screwdriver to unscrew the four 6.0 mm screws located in each corner of the watch to remove the backplate.

Step 3



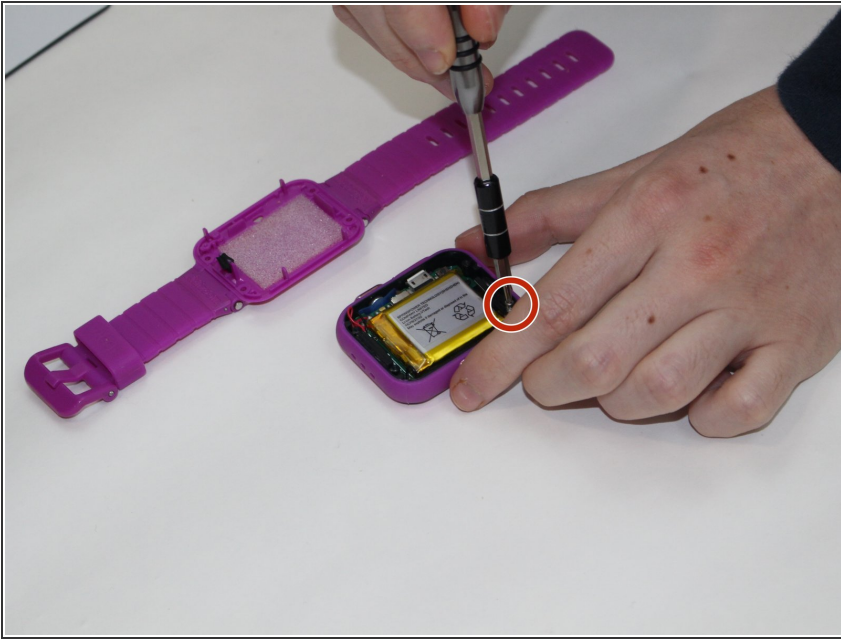
- Gently lift the backplate up to remove it.

Step 4



- After removing the backplate, lift the master switch up from the circuit board.

Step 5 — Motherboard



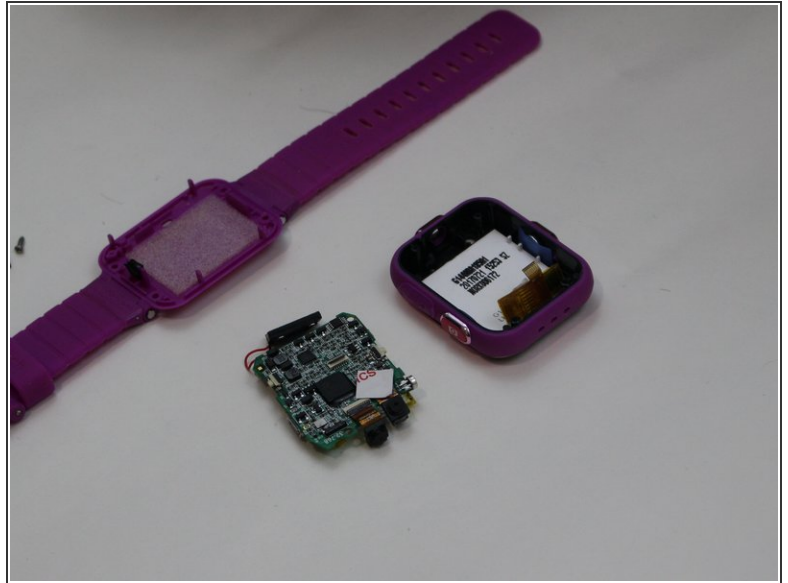
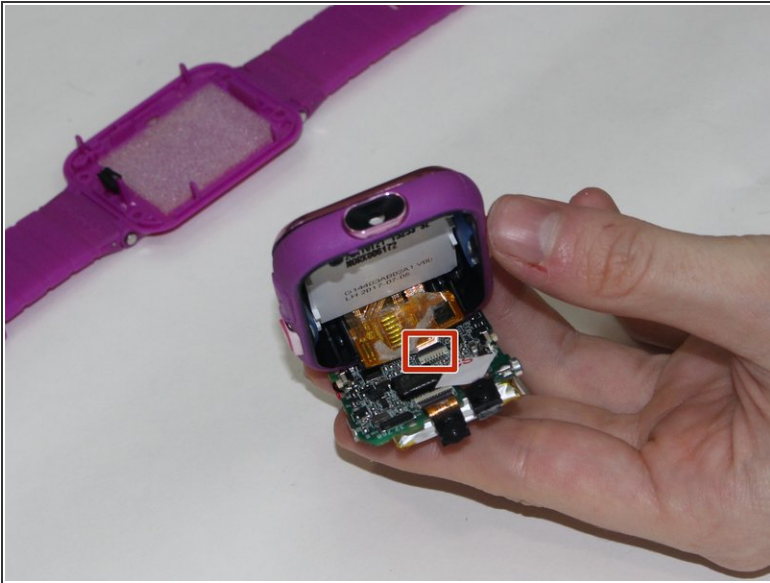
- Using a Phillips #00 screwdriver, remove the 0.6 mm screw.

Step 6



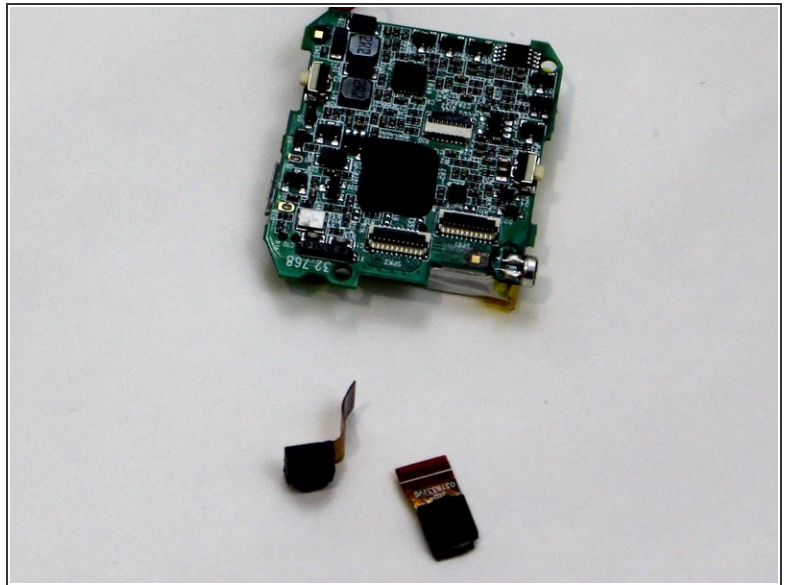
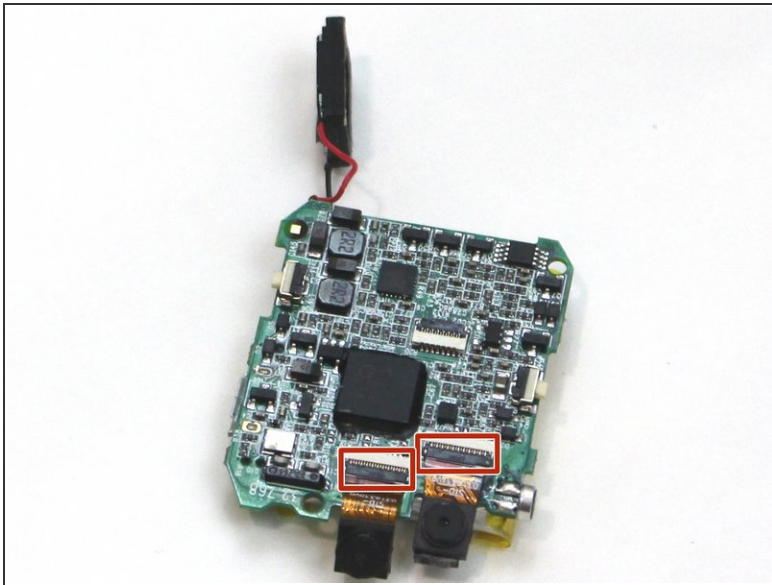
- Carefully remove the speaker from the case without disconnecting it from the motherboard.

Step 7



- Using the tweezers, carefully lift the bar holding the connection to the screen.
- Remove the motherboard from the device.

Step 8 — Camera



- Turn the motherboard so the battery is on the bottom and locate the two clips holding the cameras in place.
- Carefully lift the clips and slide the cameras out.

To reassemble your device, follow these instructions in reverse order.