



# Polk MagniFi Soundbar Internal Power Adapter Replacement

Internal Power Adapter of the Polk MagniFi Soundbar is not working.

Written By: D'Lana Pearce



---

## INTRODUCTION

If you have already tried a different power cord it is possible your internal power adapter is broken. Follow these steps to replace this part of your soundbar.



### TOOLS:

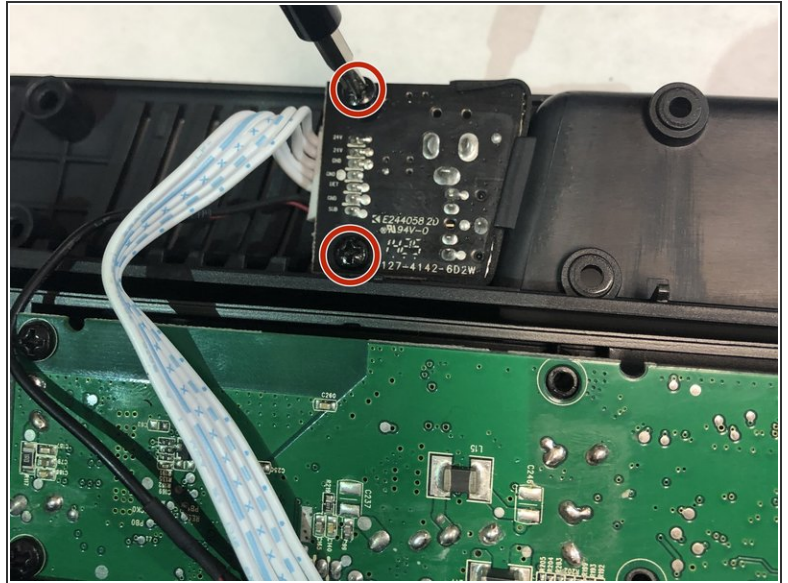
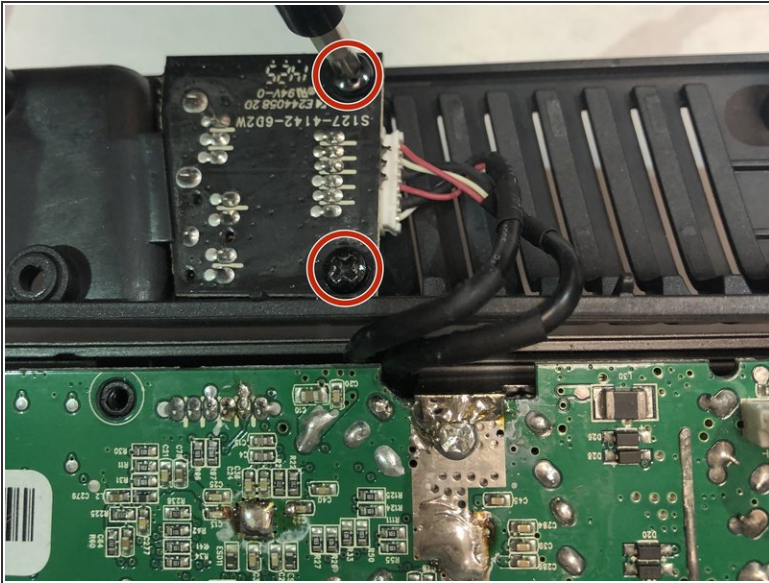
- [Phillips #1 Screwdriver](#) (1)
-

## Step 1 — Internal Power Adapter



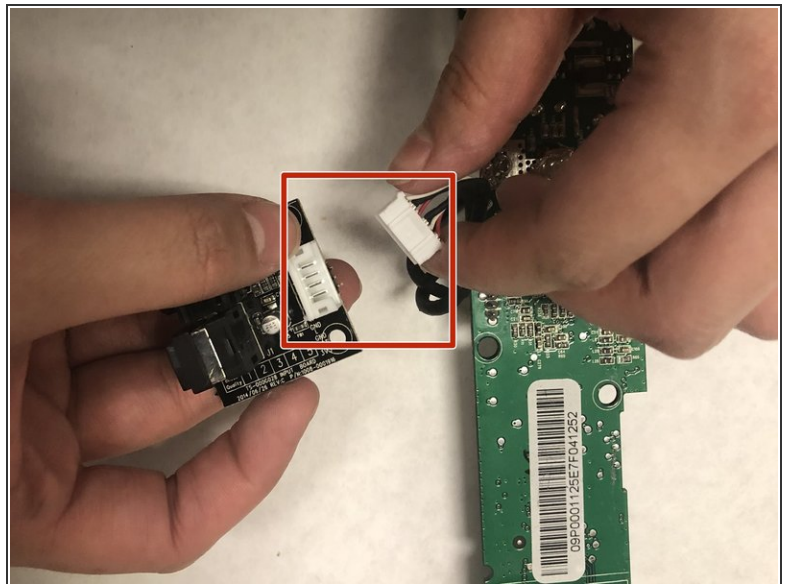
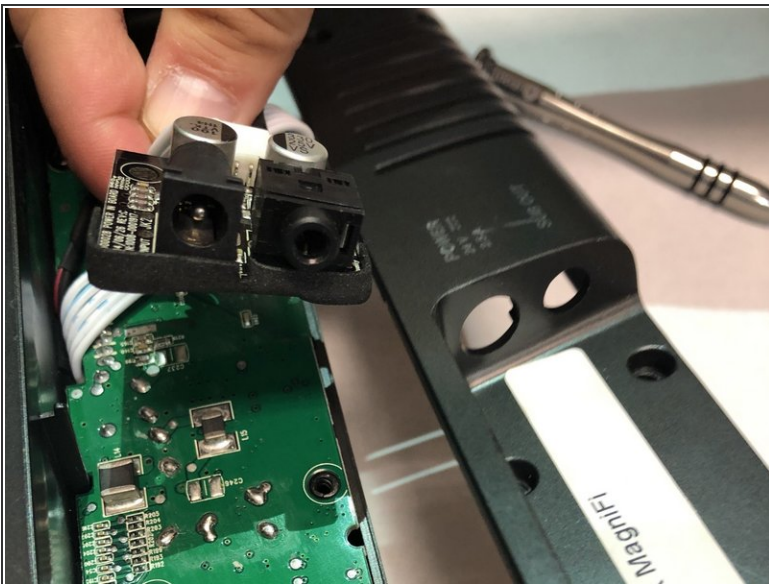
- To begin, remove the 8 screws locating on the back of the soundbar. These can be removed with the ifixit screwdriver equipped with a Phillips' head in size J1.
- The cover will lift up, but there will be wires underneath connected to the cover that need to be unscrewed. This will be shown in the next step.
- The 8 screws on the back cover, as well as the screws removed in the following steps, are all the exact same length (approx. 1 centimeter). Keep track of all screws but do not worry if they become mixed up.

## Step 2



- Underneath the back cover, there will be two flat panels, each with two 1cm screws.
- Remove the two screws using the Phillips #1 screwdriver. Once they are unscrewed, the panels will hang loose allowing unobstructed access to the motherboard.

## Step 3



- To detach the cables grab the internal power adapter in one hand and with the other grab the base of the wires and firmly pull them straight out from the device.

To reassemble your device, follow these instructions in reverse order.