



Dell Latitude E6520 Bottom Cover Replacement

How to replace a Dell Latitude E6520 bottom cover.

Written By: Alec Weiss



INTRODUCTION

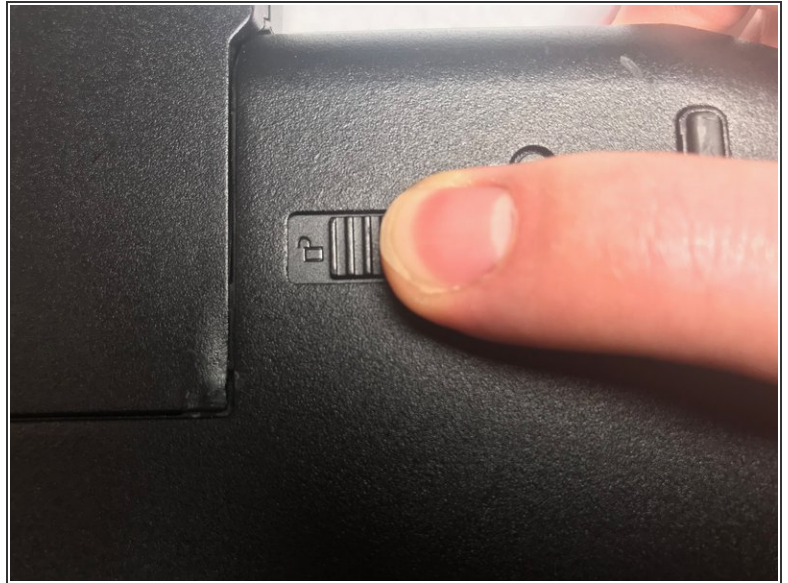
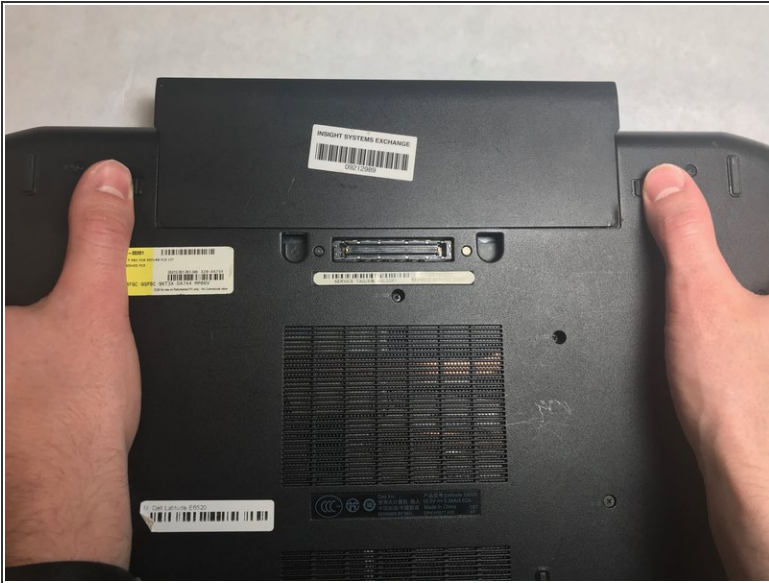
The bottom plastic cover is held on by 10 JIS #0 screws with a head size of 3.93 mm and a length of 8.46 mm.



TOOLS:

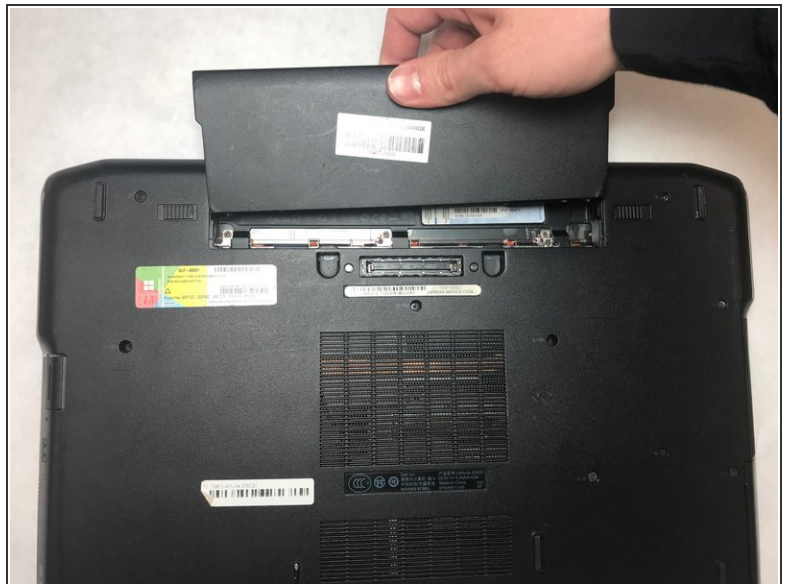
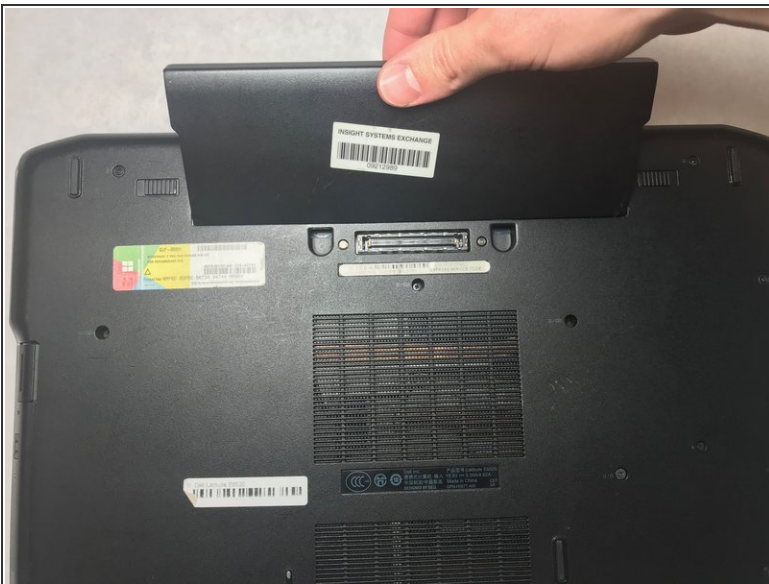
- [JIS #0 Screwdriver](#) (1)
-

Step 1 — Battery



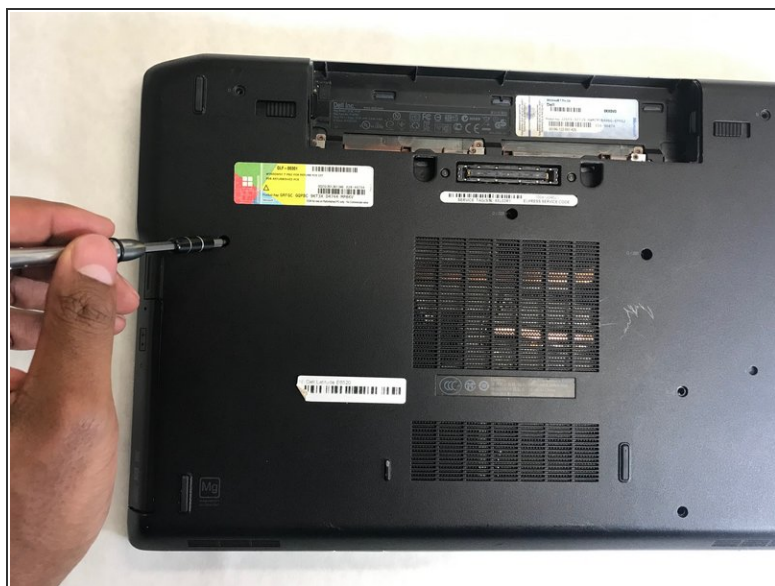
- With the laptop closed and the bottom side facing up, slide the two battery latches towards the sides of the laptop.
- ⓘ When the latches are unlocked, a small logo resembling an open padlock will become visible.

Step 2



- Grasp the battery from the top and pull upward.

Step 3 — Bottom Cover



- Remove the ten 8.6 mm JIS #0 screws.

Step 4



- Place fingers underneath cover and pull off the cover.

To reassemble your device, follow these instructions in reverse order.