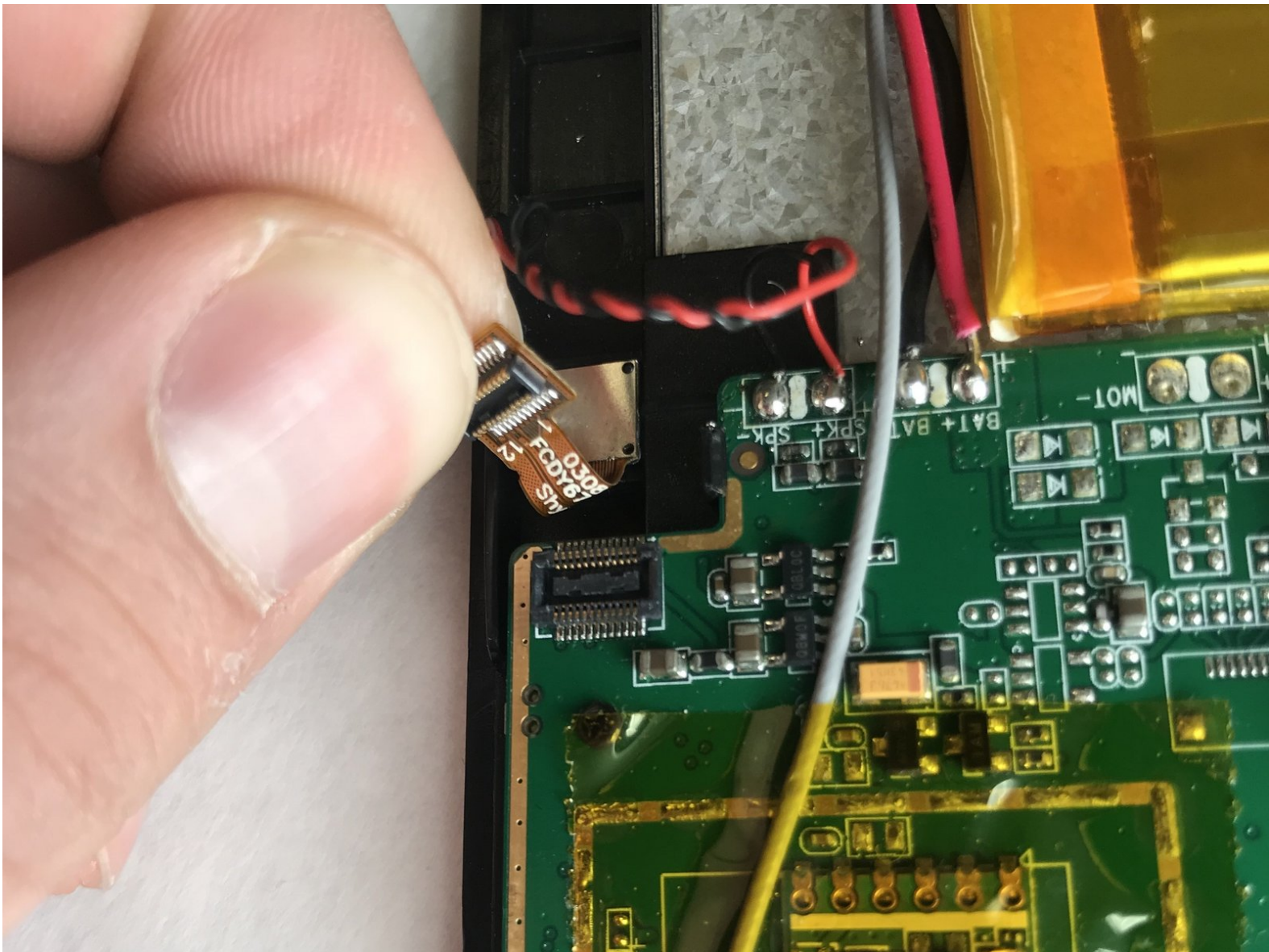




Impression i7 Front Camera Replacement

This guide details the necessary steps to remove the front facing camera from the Leader Impression i7 tablet.

Written By: Cole Beaver



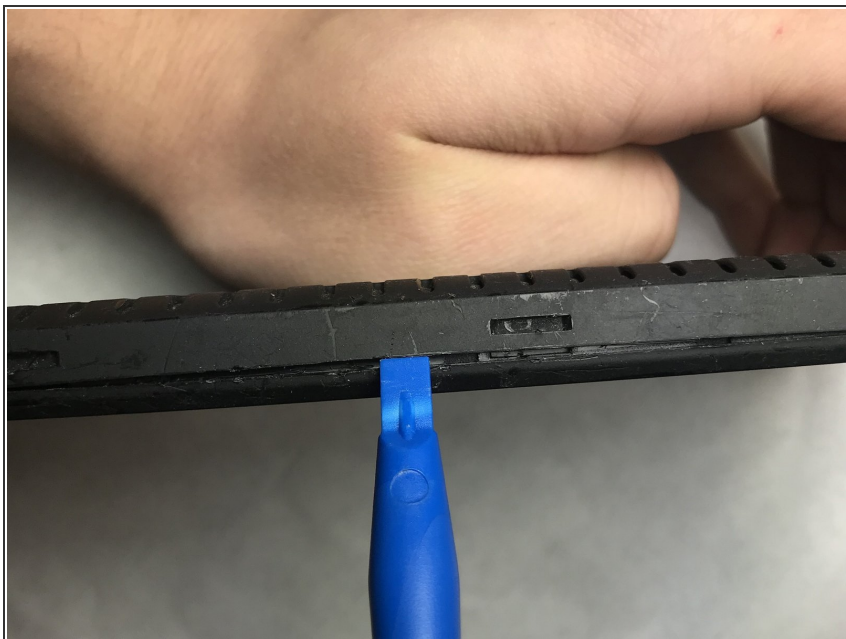
INTRODUCTION

This guide details the necessary steps to remove the front facing camera from the Leader Impression i7 tablet. Make sure you have a replacement camera ready before starting this guide.

TOOLS:

- [iFixit Opening Tools](#) (1)
 - [Soldering Iron](#) (1)
-

Step 1 — Battery



- Wedge the plastic opening tool into the seam nearest to the screen surface and begin to pry off the back of the device.

Step 2



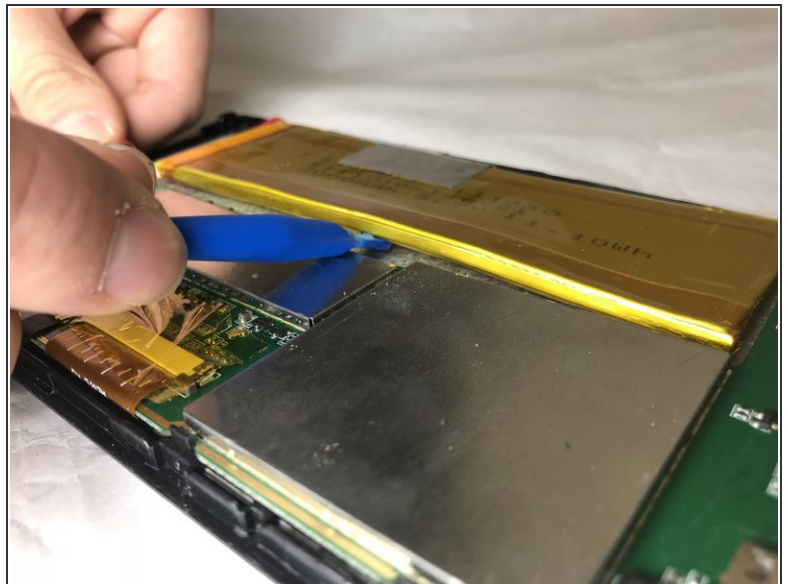
- Move the plastic opening tool along the perimeter of the device, loosening the entire back as you go.

Step 3



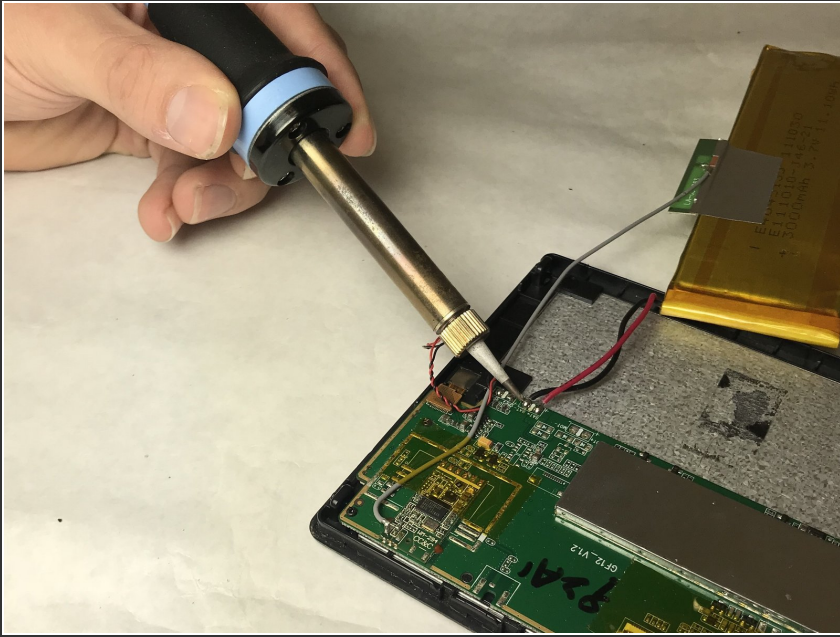
- After the entire perimeter has been pried, remove the back of the device.
- ⚠ Be careful not to disconnect the speaker and microphone cables attached to the back of the tablet.

Step 4



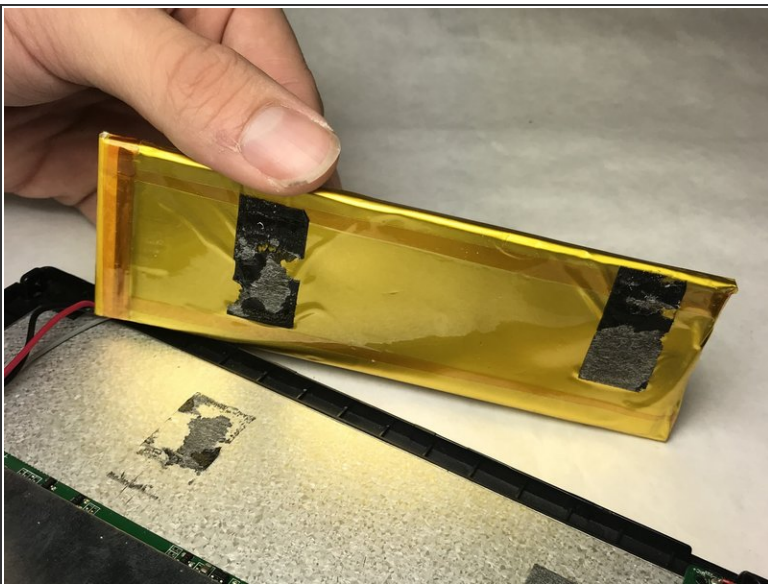
- Remove the transparent, orange tape from the edge of the battery.
- Pry the battery off, using the plastic opening tool.

Step 5



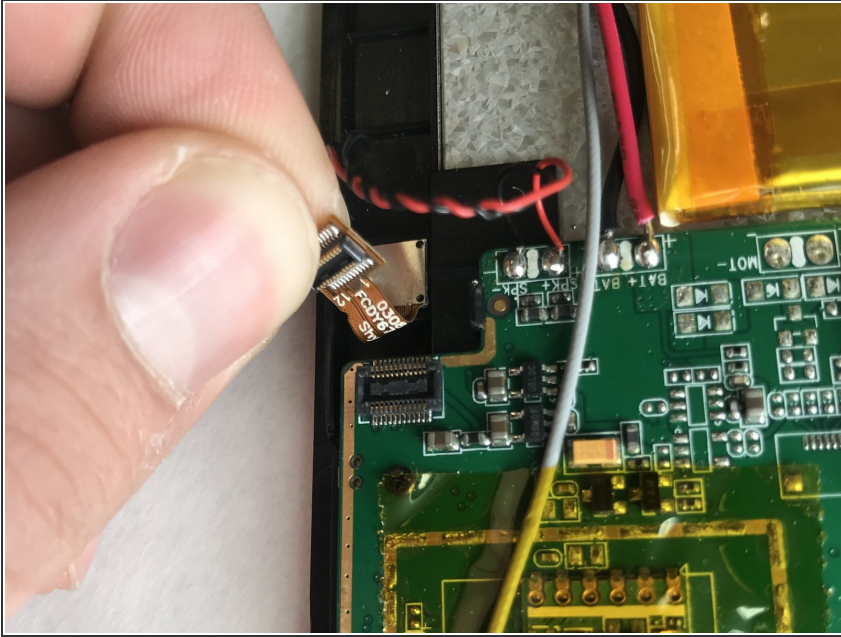
- Desolder the positive and negative leads.

Step 6



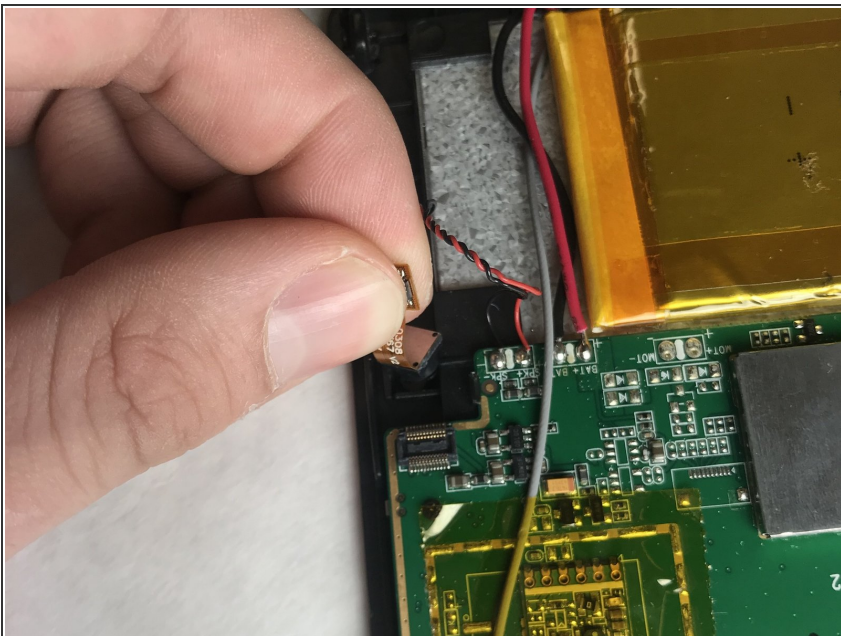
- Pull the battery away from the adhesive.
- Peel the gray tape from the top of the battery.

Step 7 — Front Camera



- Gently pull the front camera connection out of its socket.

Step 8



- Lift the camera unit from its housing. The unit should come out with minimal force.

To reassemble your device, follow these instructions in reverse order.