



Acer Aspire E1-470P-6659 Motherboard Replacement

If you have problems with the motherboard, or...

Written By: Faith Lobaton



INTRODUCTION

If you have problems with the motherboard, or the motherboard needs to be replaced or repaired, use this guide to remove and replace your motherboard.

TOOLS:

[iFixit Opening Tool](#) (1)
[Tweezers](#) (1)
[Spudger](#) (1)
[Phillips #0 Screwdriver](#) (1)
[Phillips #000 Screwdriver](#) (1)

PARTS:

[Acer AL12A32 Battery](#) (1)
[250 GB SSD](#) (1)
[500 GB SSD](#) (1)
[1 TB SSD](#) (1)
[2 TB SSD](#) (1)

Step 1 — Battery



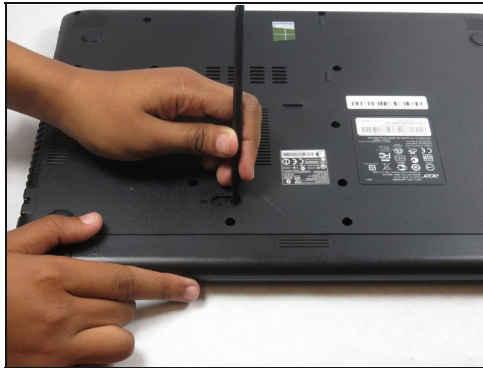
- Turn off the laptop and disconnect all device cords.

Step 2



- Flip the laptop over so the bottom is facing you.

Step 3



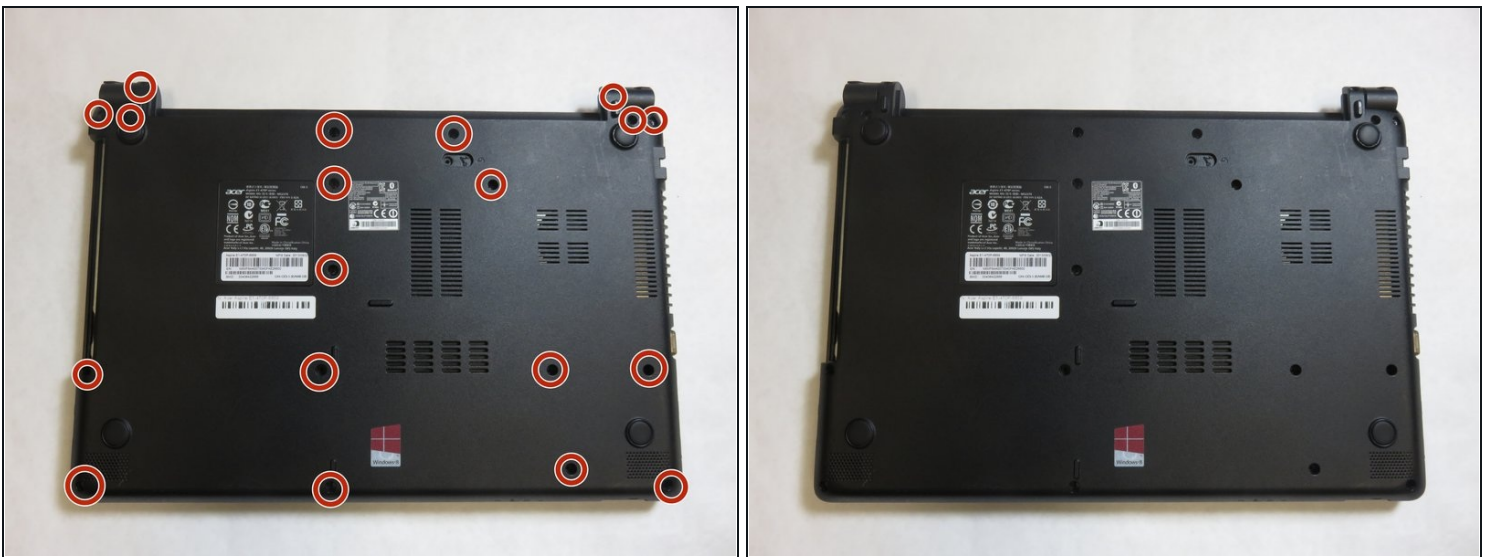
- Use your finger or a spudger to pull the battery release switch.

Step 4



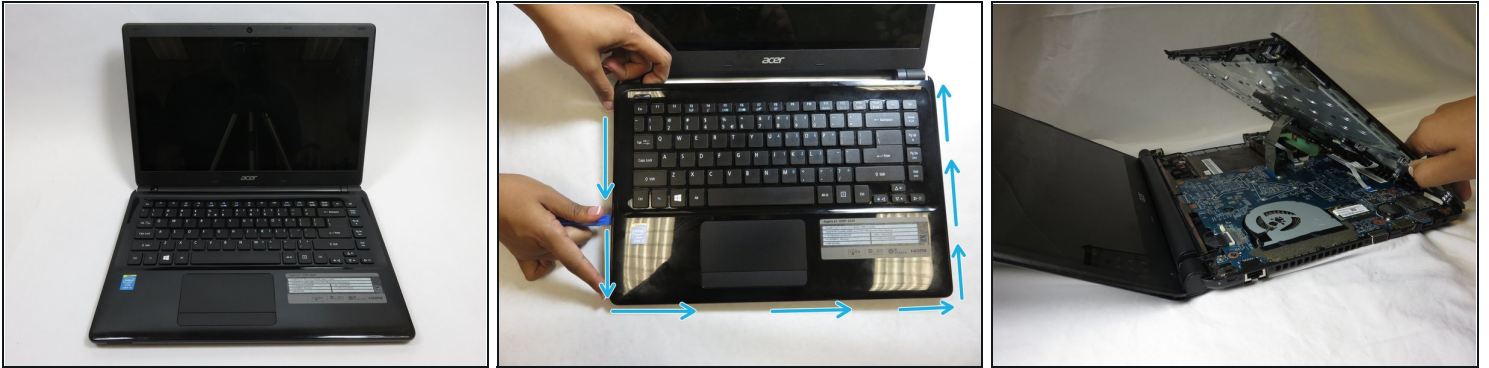
- Remove the battery from the laptop.

Step 5 — Hard Drive



- Remove nineteen screws from the back panel using a Phillips #0 Screwdriver .

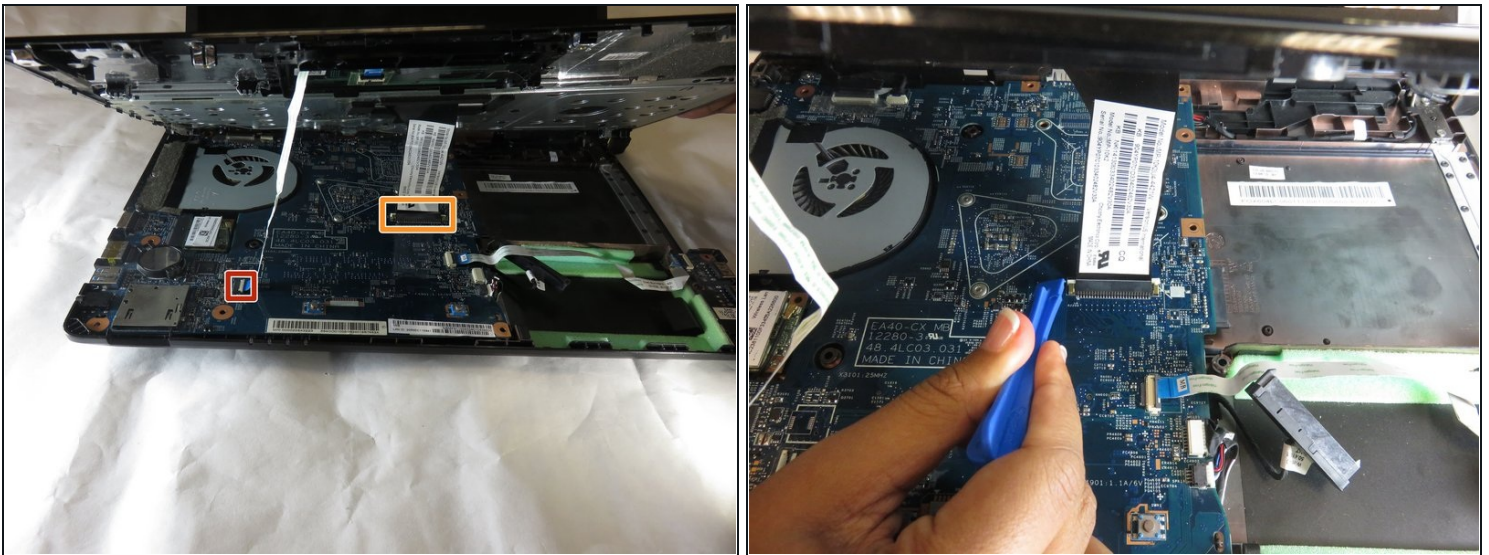
Step 6



- Run the plastic opening tool across from one corner to another along the edge.
- Separate the keyboard panel gently.

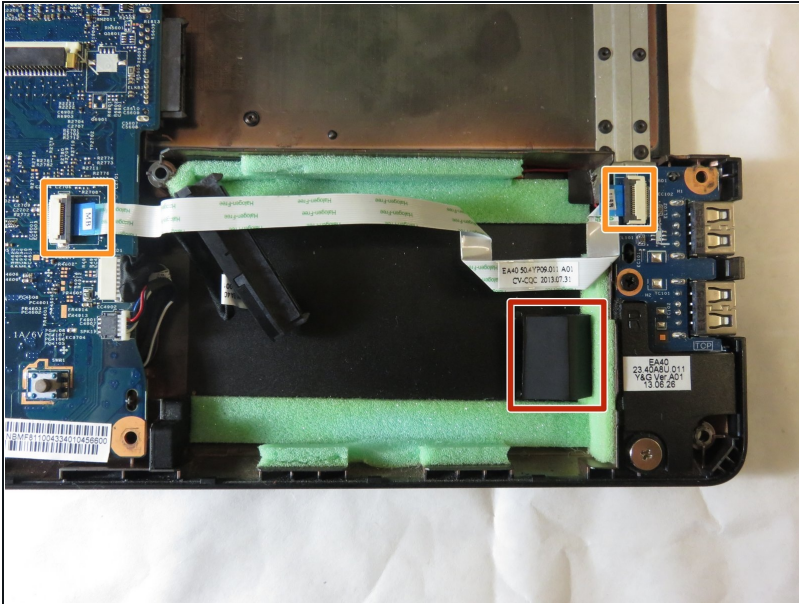
⚠ Lift the keyboard slowly from the laptop but do not lift completely because there are ribbon cables attached.

Step 7



- Disconnect the two keyboard assembly ribbon cables from motherboard.
- To release small ribbon cable, use spudger or fingers to flip gray bar along edge over.
- To release larger ribbon cable, use pry tool or spudger to slide white plastic clip forward.

Step 8



- Pull up the release tab beside the hard drive.
- Disconnect portion of ribbon cable that is covering the hard drive.

⚠ Handle the ribbon carefully.
Do not break the metal contact.

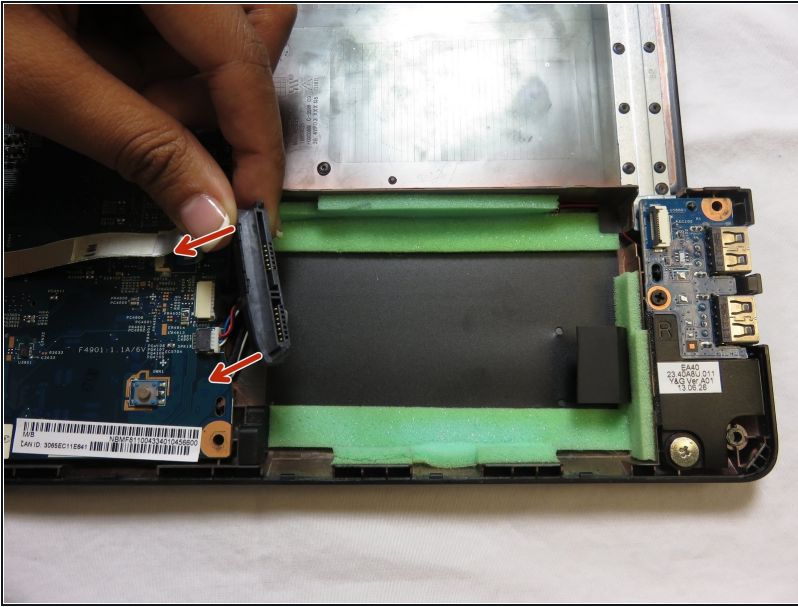
- ★ While reconnecting the ribbon after replacing a new hard drive, face the blue side with a label up. Make sure the black line beside the sticker is not crooked, so that the ribbon is tight.

Step 9



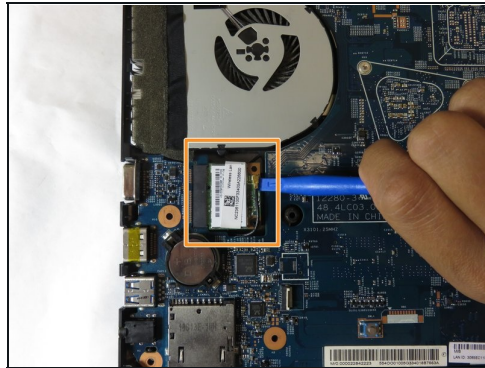
- Remove the hard drive screw using Phillips #0 Screwdriver.

Step 10



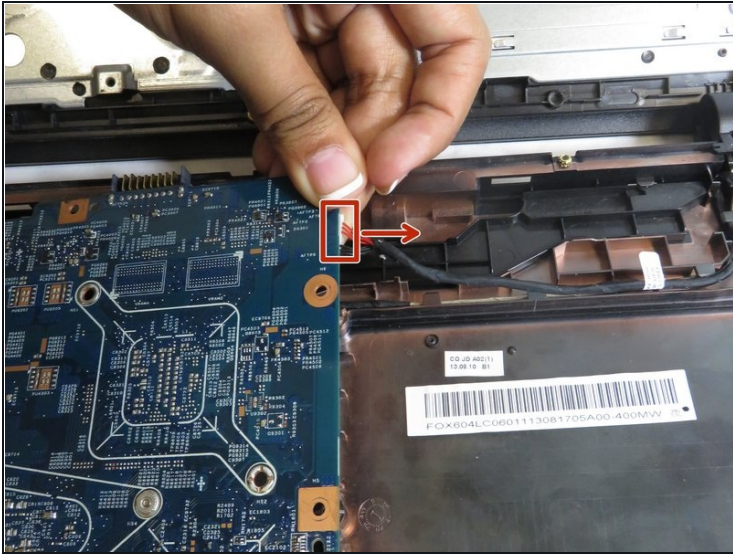
- Pull the hard drive out gently. Be aware that it is connected to the adapter.
- Gently remove adapter by pulling on both ends simultaneously to separate it from the hard drive.

Step 11 — Motherboard



- Remove additional screws that can be found on the motherboard.
- Remove the green wifi card from motherboard.
- Use spudger to disconnect the fan and motherboard from laptop.

Step 12



- Remove the cable attached to motherboard.
- Gently lift and remove the motherboard from the laptop.

To reassemble your device, follow these instructions in reverse order.