



Lenovo Thinkpad Edge E545 Hard Drive Replacement

This guide will show you how to replace your...

Written By: Brian butler



INTRODUCTION

This guide will show you how to replace your hard drive located in your Lenovo Thinkpad Edge E545.

Hard drive failures will include overheating, major slowdowns, frequent error messages, and missing files or files you cannot open.

Before beginning repair, power off your device and unplug it from the charger. Also check the area around your Thinkpad to keep clear of extra debris that may get in during repair.

TOOLS:

Phillips #0 Screwdriver (1)

Metal Spudger (1)

Phillips #000 Screwdriver (1)

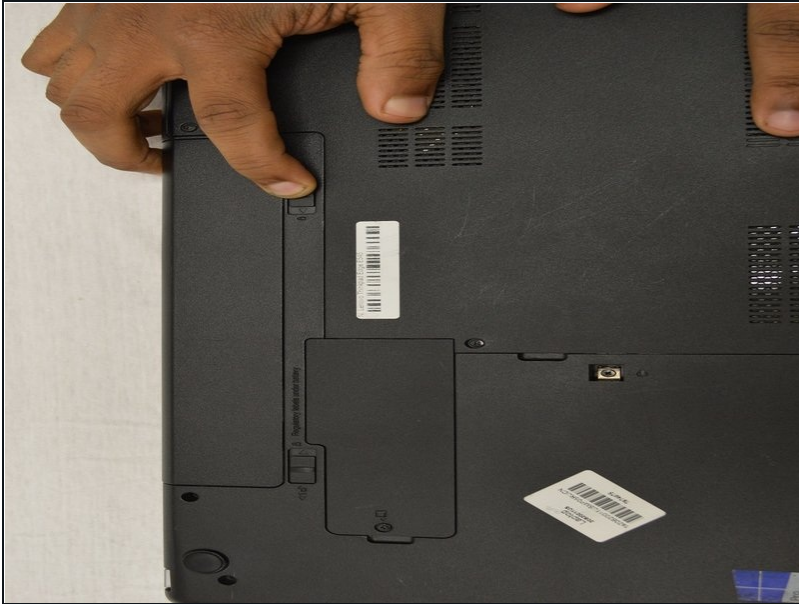
Step 1 — Battery



- First, flip the laptop over as shown in the photo.

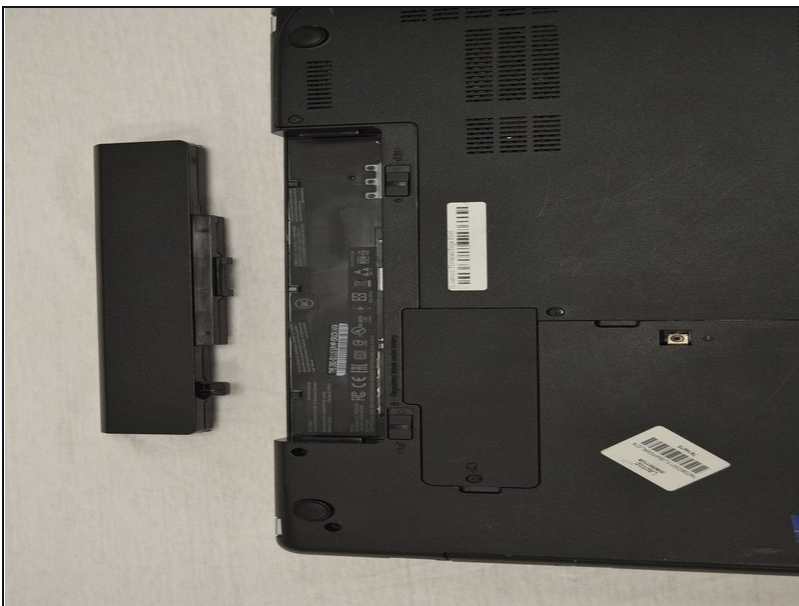
 **Make sure device is fully powered down before removing battery.**

Step 2



- Below the battery are two small tabs. These function as a lock for the battery.
- Push the tabs towards each other to release the battery.

Step 3



- Remove the battery from the device.

Step 4 — Back Panel



- Using a Phillips screwdriver, remove the four screws around the edges of the rectangular panel.

❗ It is recommend that you fully remove the screws and place them in a secure location.

⚠ Make sure to use the appropriate sized screwdriver. The wrong size can cause damage to the screws or screwdriver.

Step 5



- Once all the screws are removed, gently slide the metal scalp around the edge of the panel to pry it open.
- Slowly lift the left edge side of the panel with your fingers. Once the left side is up, continue lifting the right edge of the panel.

Step 6



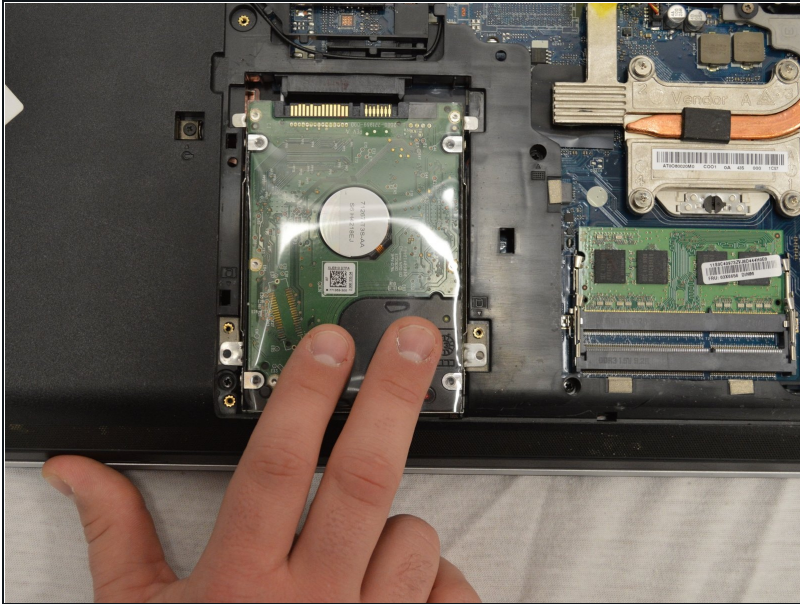
- Remove the back panel.
- The back of the laptop will be exposed once the panel is removed.
- ❗ Many of these small components are easily damaged--do not touch anything unless instructed to.

Step 7 — Hard Drive



- After back panel is removed, you can remove the two screws at the bottom of the hard drive using the Phillips #000 screwdriver.

Step 8



- After screws are removed, slide the hard drive down to disconnect from motherboard and remove it.

Step 9



- Now you have successfully removed the Hard drive.

To reassemble your device, follow these instructions in reverse order.