



Hover-1 Ultra Charging Port Replacement

Replace the broken charging port on your Hover-1 Ultra Hover Board to charge the battery and continue riding

Written By: Camron Clifton



INTRODUCTION

Is your Hover-1 Ultra not charging to full battery, or not powering up at all? If you are experiencing these problems, it can be fixed with a very simple replacement of the charging port of your device. You will need a Phillips #1 screwdriver to remove the screws and an adjustable crescent wrench to remove the port



TOOLS:

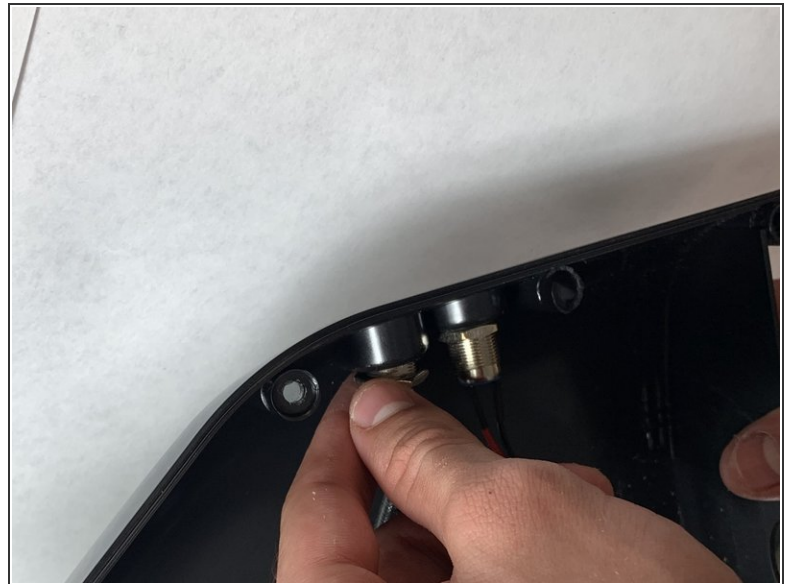
- [Phillips #1 Screwdriver](#) (1)
 - [7/16 Crescent Wrench](#) (1)
-

Step 1 — Charging Port



- Orient the hoverboard so that the pads are facing down.
- With the Phillips #1 screwdriver, remove all 18 of the screws on the underside of the board.
- Carefully remove the shell, lifting directly up.

Step 2



- Using your hands or a crescent wrench, begin removing the charging port.
- Turn the charging port counter-clockwise to release it from the shell.

Step 3



- Unclip the insulated red and black wires attached to the port from the motherboard

Step 4



- Remove the charging port through the assembly.
- Place new charging port through the assembly.
- Clip red and black insulated wires into the motherboard.

To reassemble your device, follow the instructions for step 1 in reverse order.