



# MacBook Pro 15" Retina Display Mid 2015 Feet Replacement

Have your MacBook Pro feet seen better days?...

Written By: Taylor Dixon



# INTRODUCTION

Have your MacBook Pro feet seen better days? Use this guide to give your Mid 2015 MacBook Pro a fresh set of feet.



## TOOLS:

MacBook Pro and Air 5-Point Pentalobe Screwdriver (1)

Tweezers (1)

Adhesive Cleanup Kit (1)



## PARTS:

MacBook Pro Retina (A1425, A1502, A1398, and A2289) Plastic Feet (1)

## Step 1 — Lower Case



- Remove the following P5 pentalobe screws securing the lower case to the MacBook Pro:
  - Eight 3.1 mm
  - Two 2.3 mm

## Step 2



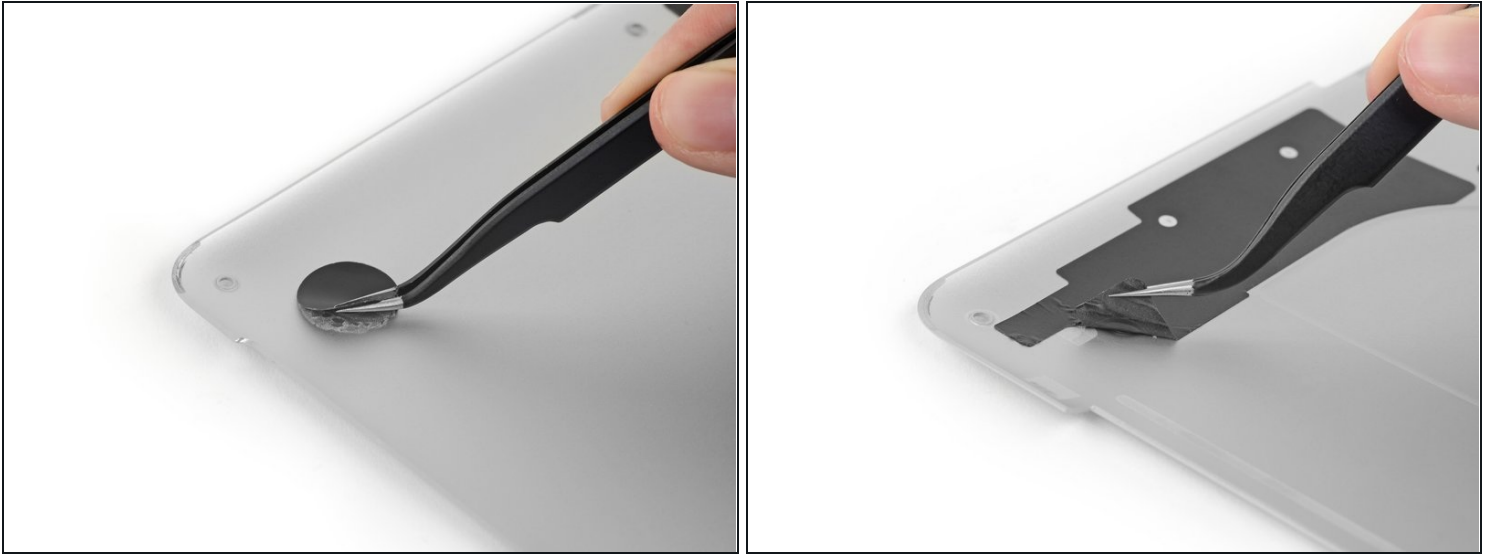
- Lifting from the edge nearest the clutch cover, lift the lower case off the MacBook Pro.

## Step 3



- ① The lower case has two plastic pegs (red) that fit into plastic clips in the upper case (orange).
- ★ During reassembly, gently push down the center of the lower case to reattach the case to its two plastic clips.

## Step 4 — Feet



- Peel away any stickers from the backside of the rear case covering the feet you have chosen to replace.
  - ☑ Any stickers you remove will most likely be unsalvageable for re-use. That's okay! Your MacBook does not need them to function.

## Step 5



- Remove any broken or damaged feet.
  - ① If the foot you are replacing is still intact, you can use your [tweezers](#) push it out from the inside.
- If the old foot is difficult to remove, use a hair dryer or a heat gun to apply some heat to the area and loosen the adhesive.

## Step 6



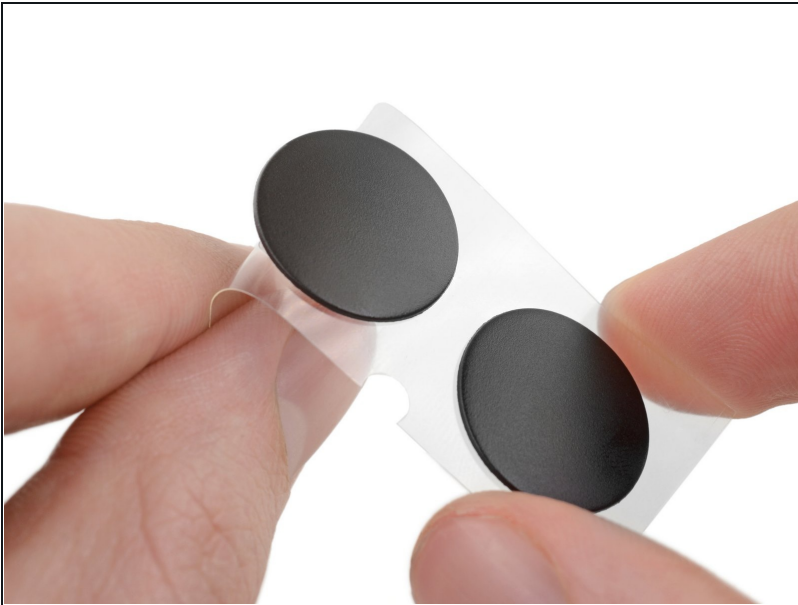
- Scrub the foot cavity with adhesive remover to remove any remaining adhesive.

## Step 7



- Wipe the foot cavity with an isopropyl alcohol prep pad to remove any cleaner residue and prep the area for the adhesive on the new foot.

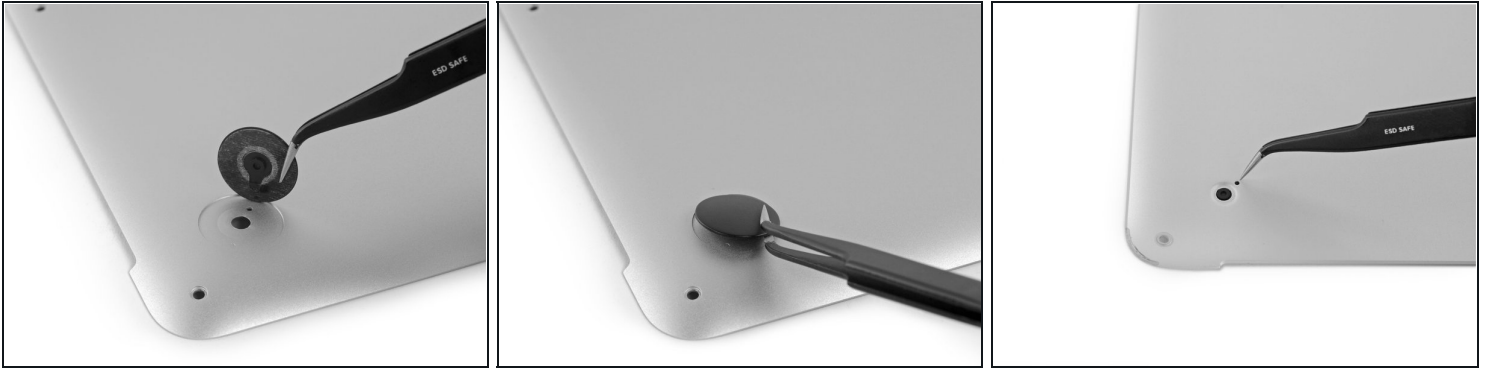
## Step 8



- Peel a replacement foot from the plastic backing.
  - ① The adhesive is fairly strong —make sure that you are peeling the foot up, not tearing the plastic backing.

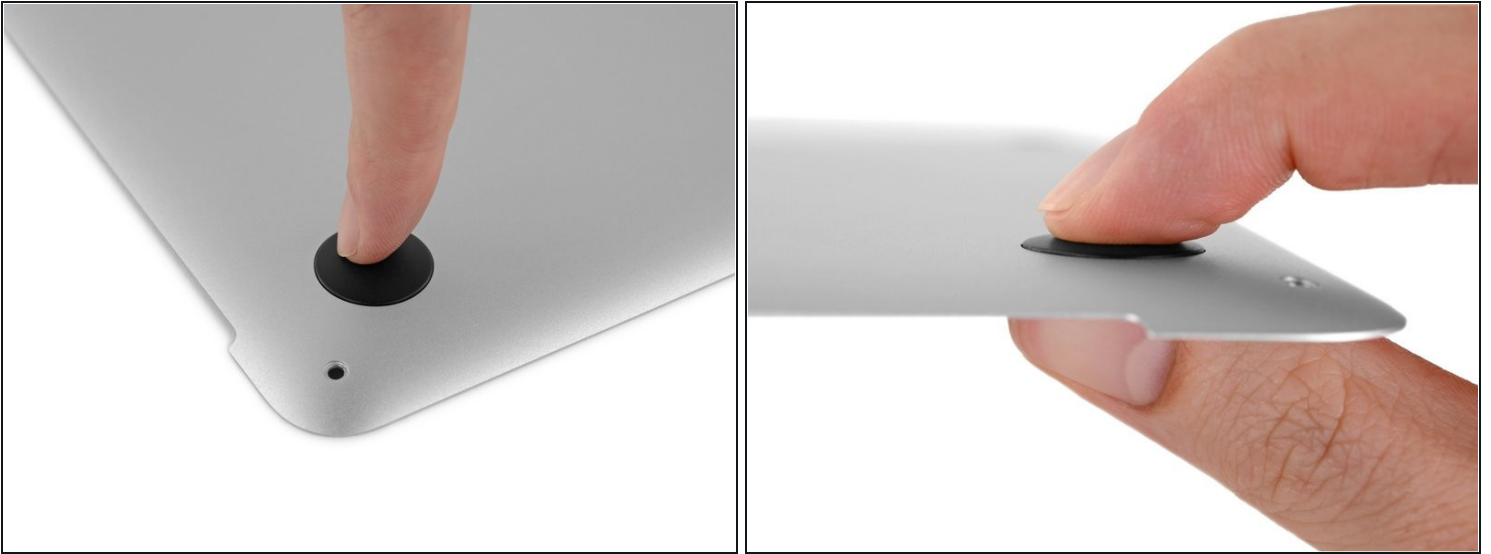


## Step 9



- Align the new foot inside the cavity.
  - ① Make sure the alignment nub on the foot is lined up with the small hole near the perimeter of the pad.
  - ① You may want to use a pencil to lightly mark where the alignment nub is located. Be careful not to scratch the lower case with your pencil.
- Lay the foot down while keeping it properly aligned.
- Check for proper alignment from the inside of the case. The alignment nub should be slightly visible through the alignment hole.

## Step 10



- Press the new foot into place firmly with your finger, then apply pressure by pinching the foot from either side of the case with your finger and your thumb.
- Maintain pressure for 30 seconds to set the pressure-sensitive adhesive.
- Repeat the last seven steps for any remaining broken or worn feet.

---

To reassemble your device, follow these instructions in reverse order.