



Gateway NV57H50u Wireless Network Card Replacement

This guide will show how to remove and replace the wireless network card for the Gateway NVH50u laptop.

Written By: Aaron Allison



INTRODUCTION

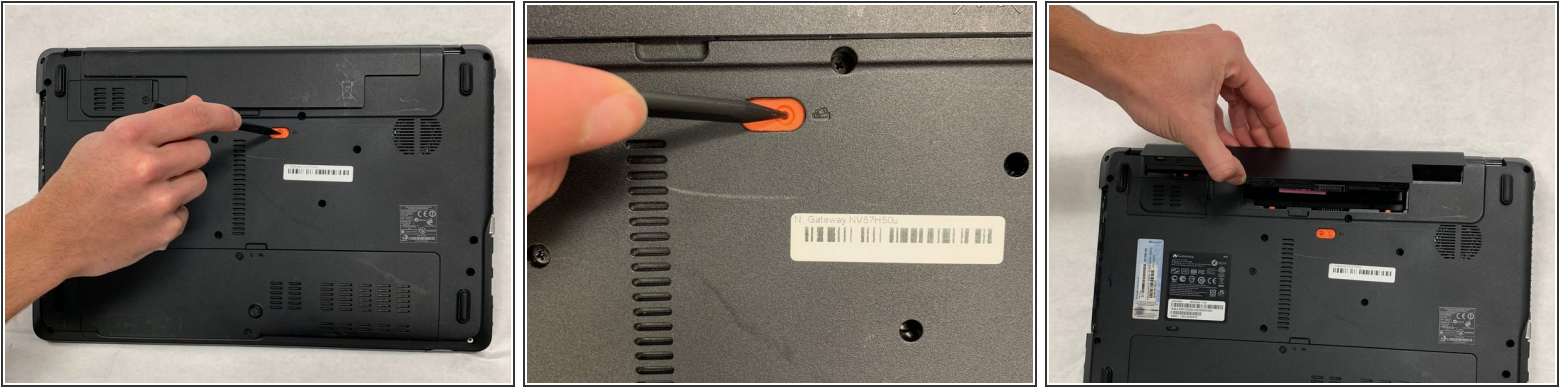
To network card allows the device to access wireless networks. To access this part the rear cover will need to be removed.



TOOLS:

- [Phillips #0 Screwdriver](#) (1)
 - [Spudger](#) (1)
-

Step 1 — Battery



- Push orange locking tab with spudger right, until battery lifts out of place.

⚠ Laptop should be unplugged from power supply before removal.

Step 2 — Rear Cover



- Unscrew the two 7 mm long #0 Phillips screws.

Step 3



- Lift and remove the cover panel via the indentation in the middle of the panel.

Step 4 — Wireless Network Card



- Dislocate the white wire by pushing upward away from the network card.

Step 5



- Dislocate the black wire by pushing upward away from the network card.

Step 6



- Unscrew the 3 mm long #0 Phillips head screw.

Step 7



- Pull the card outward to remove.

To reassemble your device, follow these instructions in reverse order.