

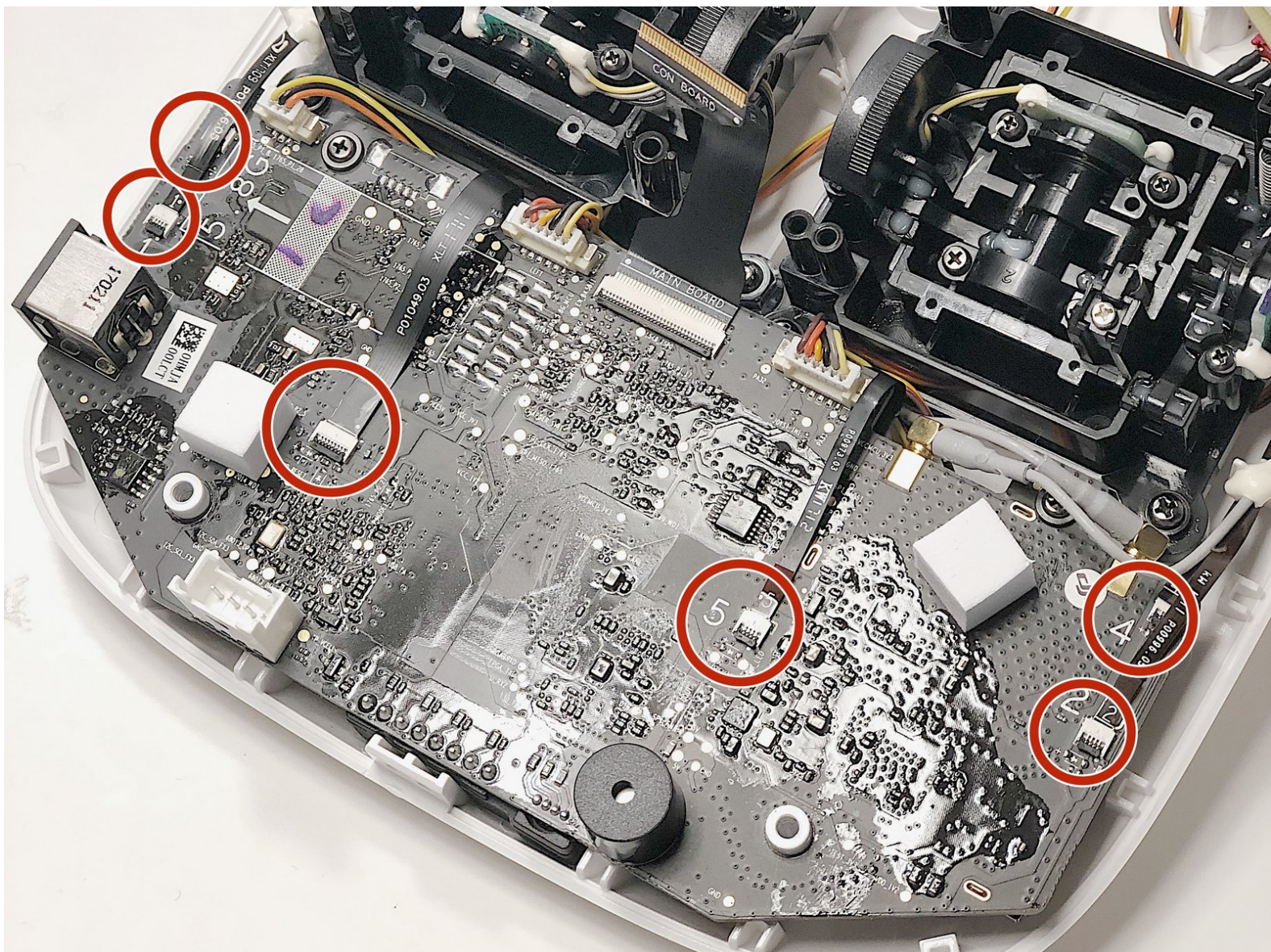


# DJI Phantom 4 Advanced Remote Controller

## Motherboard Replacement

Removing and replacing the motherboard of the DJI Phantom 4 Advanced Remote Controller.

Written By: cade knott



# INTRODUCTION

This guide will show you how to remove and replace the motherboard of the DJI Phantom 4 Advanced Remote Controller.

Before you begin:

- Please make sure to completely power off the the controller prior to any replacements.
- Please read the guide before any replacements in order to familiarize yourself with the process.



## TOOLS:

- [Spudger](#) (1)
- [TR8 Torx Security Screwdriver](#) (1)
- [Phillips #0 Screwdriver](#) (1)
- [Phillips #00 Screwdriver](#) (1)
- [Tweezers](#) (1)



## PARTS:

- [DJI Phantom 4 Advanced Remote Controller Motherboard](#) (1)

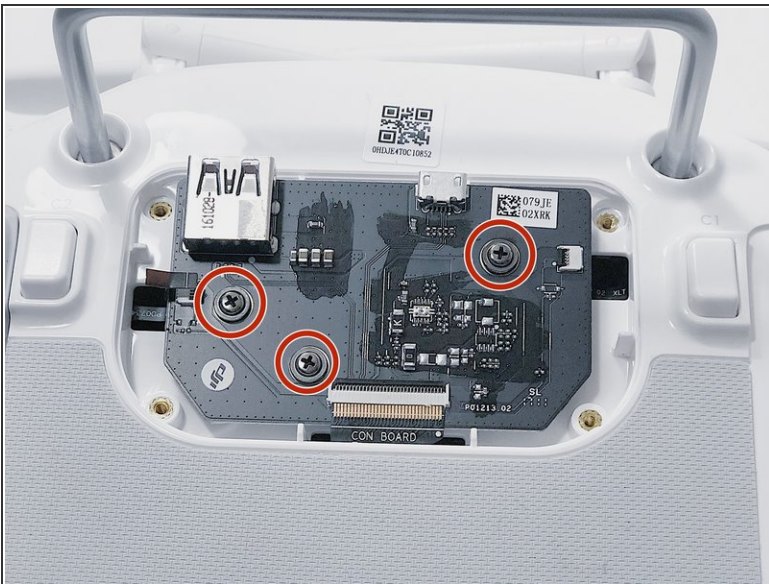


## Step 1 — Back Panel



- Remove the four screws with a Torx T8 screwdriver to access the back con board.

## Step 2

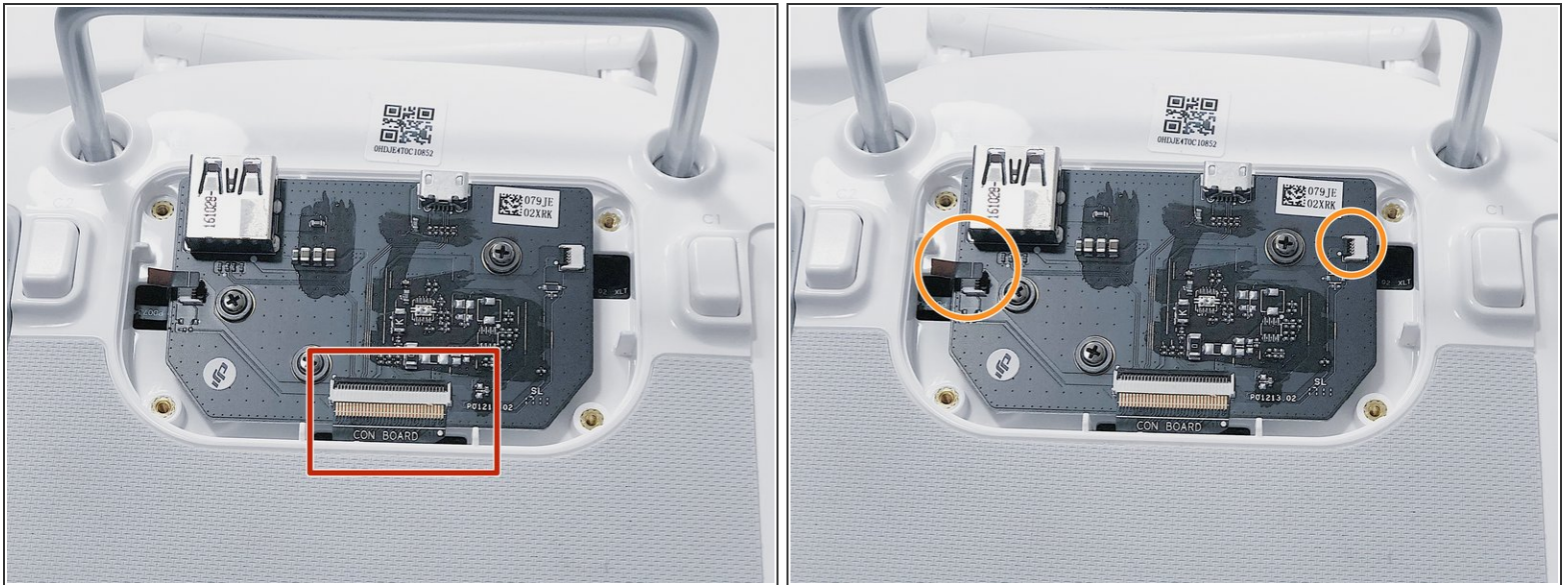


Phillips #00 screwdriver.



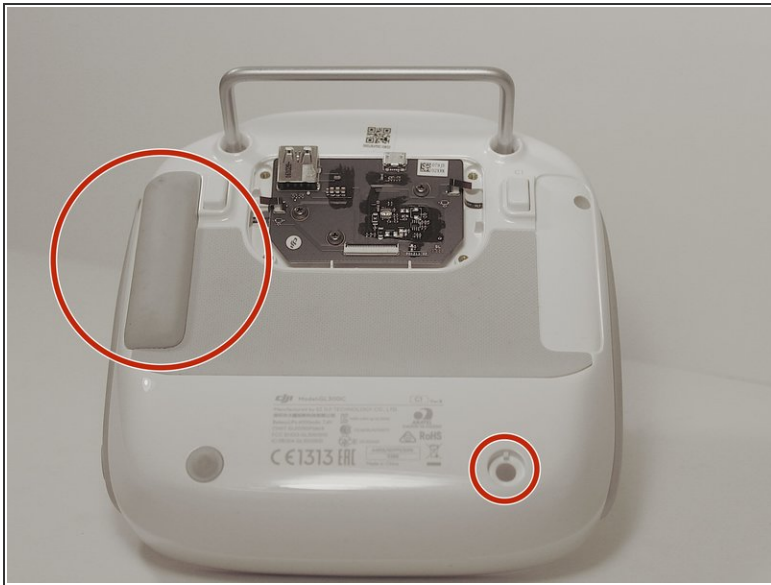
- Remove three screws using a Phillips #00 screwdriver.

## Step 3



- With tweezers, gently remove the large con board tab.
- Use your hands to remove the two small clips. Pull out from the socket, in a horizontal direction.

## Step 4



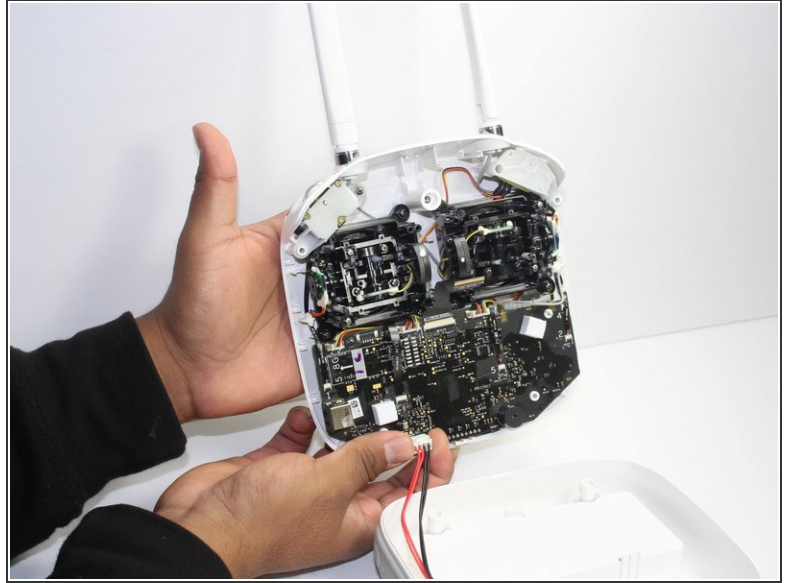
- Peel off the rubber grips to access the screw holes.

⚠ Make sure to save your grips and do not get them stuck to anything, you are going to want to save the adhesive.

- Remove the back board and set it aside.

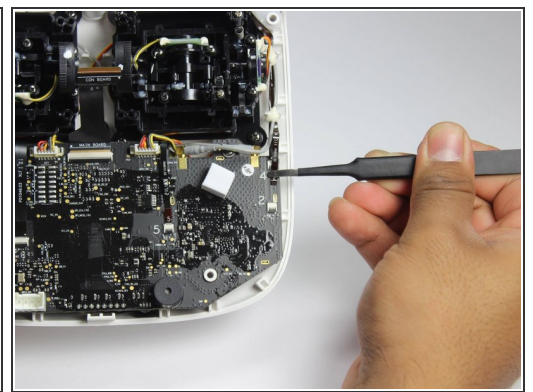
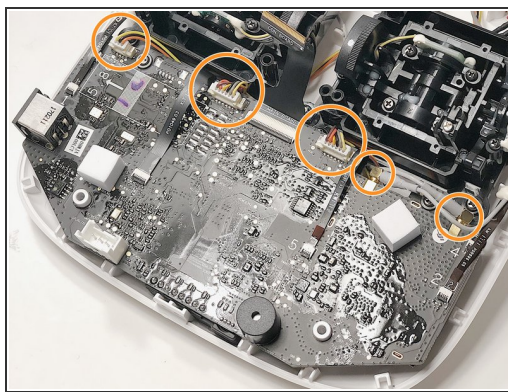
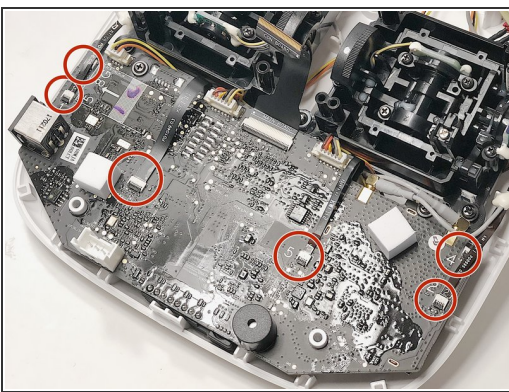


## Step 5



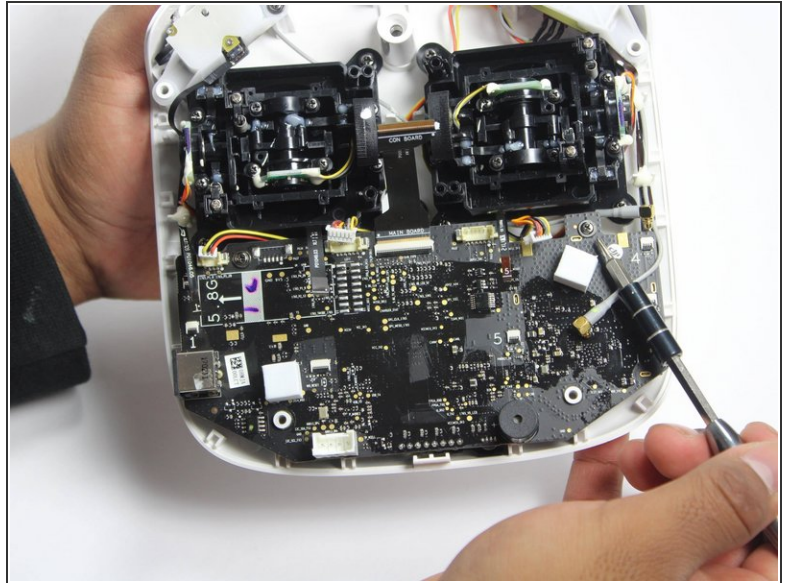
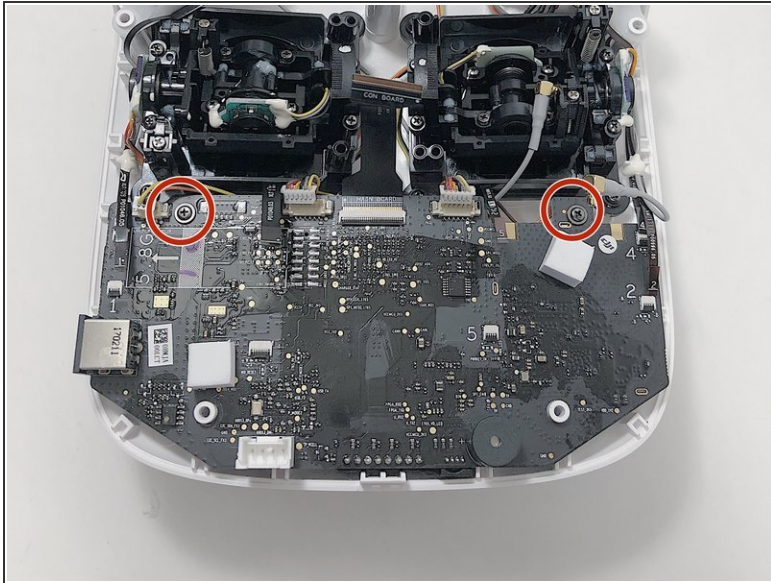
- Pull apart the back plastic panel.
- ⓘ Recommended tool for this would be the metal spudger, but not required.
- Once the back panel is off, you will have access to the motherboard.

## Step 6 — Motherboard



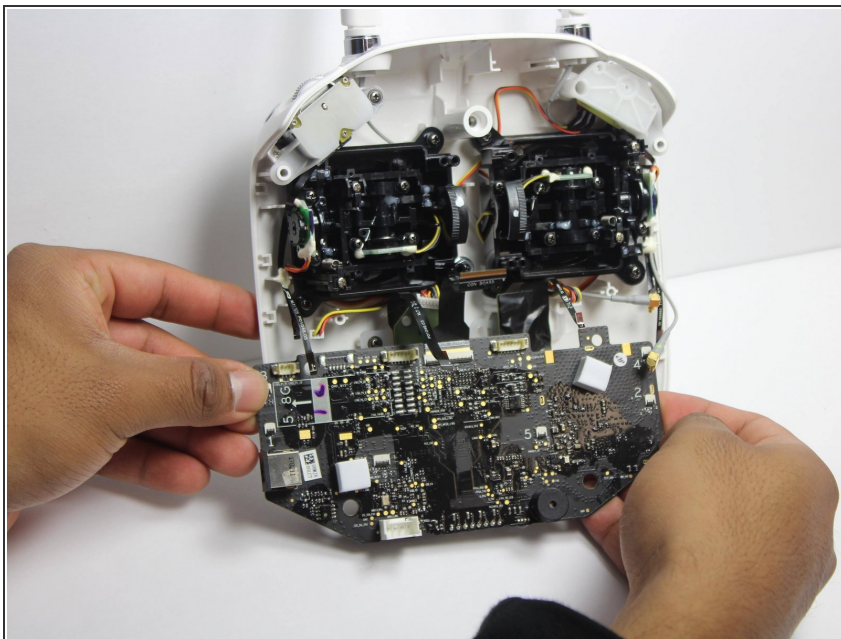
- Disconnect ribbon tabs 1,2,5,8G, and 3.
  - Remove ribbon tab by pulling gently along motherboard. Do not pull straight out.
- Then remove the plugs

## Step 7



- With the Phillips #00 screwdriver, remove the two Phillips screws.

## Step 8



**⚠ Double check to make sure all tabs, plugs and screws are removed or disconnected.**

- Gently lift motherboard out of the case.

To reassemble your device, follow these instructions in reverse order.