



2002-2008 Dodge Ram 1500 Stereo Head Unit Replacement

This guide demonstrated how to remove the Stereo Head Unit and surrounding trim.

Written By: Ken





TOOLS:

- [Phillips #2 Screwdriver](#) (1)
-

Step 1 — Stereo Head Unit




- Fold up your center console and take a seat with a good view of your stereo.
 - Locate the screw in the bottom right hand side of the console, just above the coat hanger hook.
- ⚠ When removing the screw, be careful to prevent the screw from falling into the console. Use your finger to clamp it against the screwdriver to ensure it does not slip off.
- Remove the 12mm long #2 Phillips screw with a #2 screwdriver.

Step 2

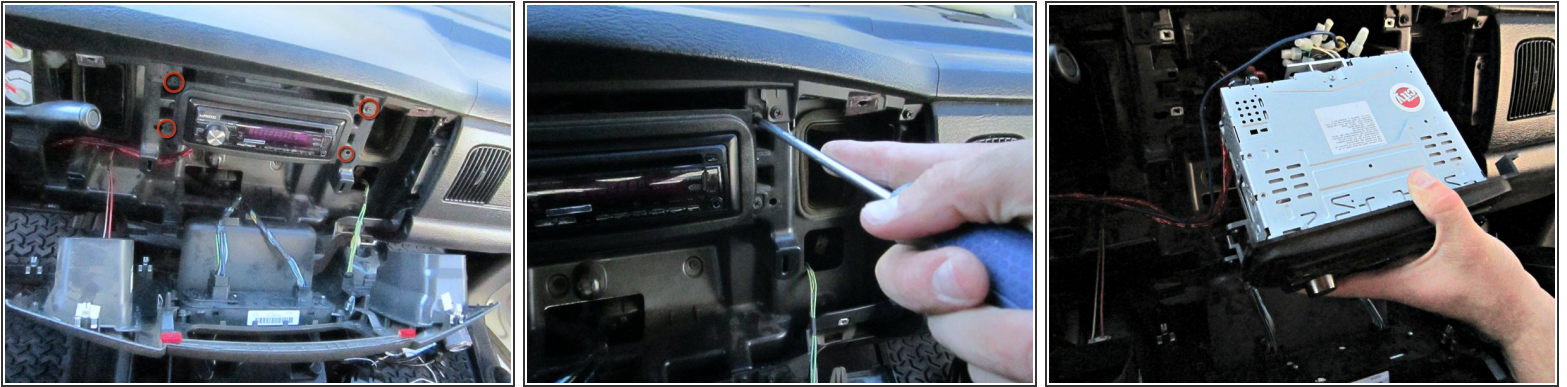


- Lower the cup holder and trash receptacle to allow better access to the bottom lip of the console trim.

 Be careful when popping off the console trim. Delicate wires controlling the AC and cigarette lighter are attached to the front face. A forceful pull may break the connections.

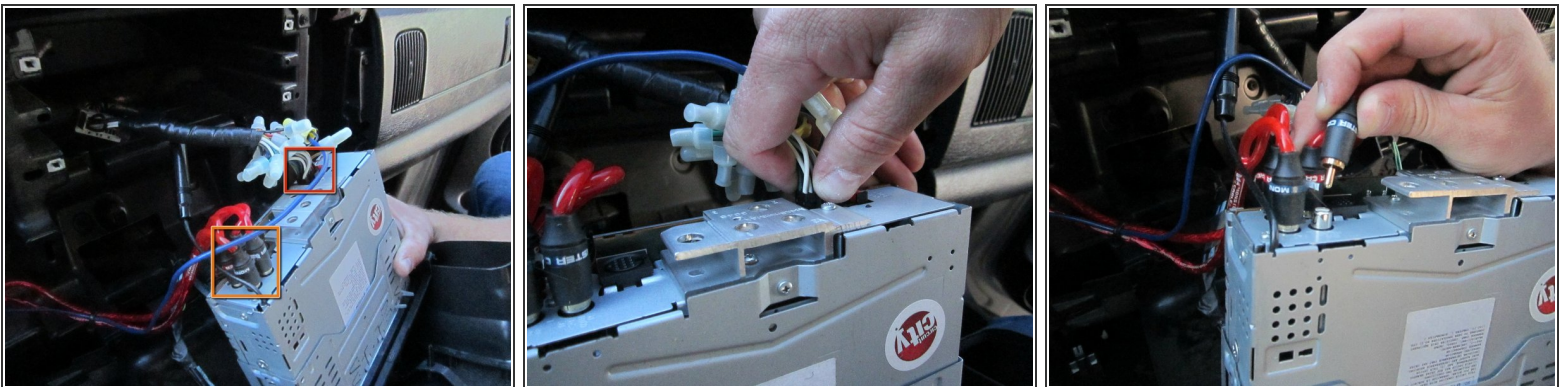
- Grasp the bottom right hand corner of the console trim and slowly pull toward you. Gradually increase your force until the you feel the right side clips pop off.
- Repeat again on the bottom left side of the clips to fully remove the anchoring clips.
- Once the clips are popped out, slowly lower the face plate and lay it down, supported by the wires coming out the back side.

Step 3



- i Note the locations of the wires and where they are attached. If you happen to dislodge the wires during removal you will be able to re-attach them upon re-installation.
- Locate and remove the four anchoring 12mm long #2 Phillips screws for the head unit using the #2 screwdriver.
- It is now safe to pull out the head unit. Support it in one hand to reduce tension in the cables.

Step 4



- Support the unit in one hand to remove tension from the wiring harness.
- Pinch the multi-wire connector and pull away from the unit to disconnect.
- i Note the location and orientation of your RCA cables to aid in re-installation. It is usually most useful to take a picture of the cables in place before removal.
- Remove the 4 RCA cords by simply pulling them out of each jack.

To reassemble your device, follow these instructions in reverse order.