



How to Troubleshoot Generic 1A USB Car Charger

Troubleshoot a generic car to USB-Micro charger. Test for proper output voltage, and test/replace internal components.

Written By: Jay R Fude



INTRODUCTION

If you have a device that will not charge in the car, then this guide is designed to help you discover if the problem is with the adapter or with the device. The guide is not difficult, but you will be working with live 12 volt and 5 volt electricity, and requires knowledge of how your multimeter works.



TOOLS:

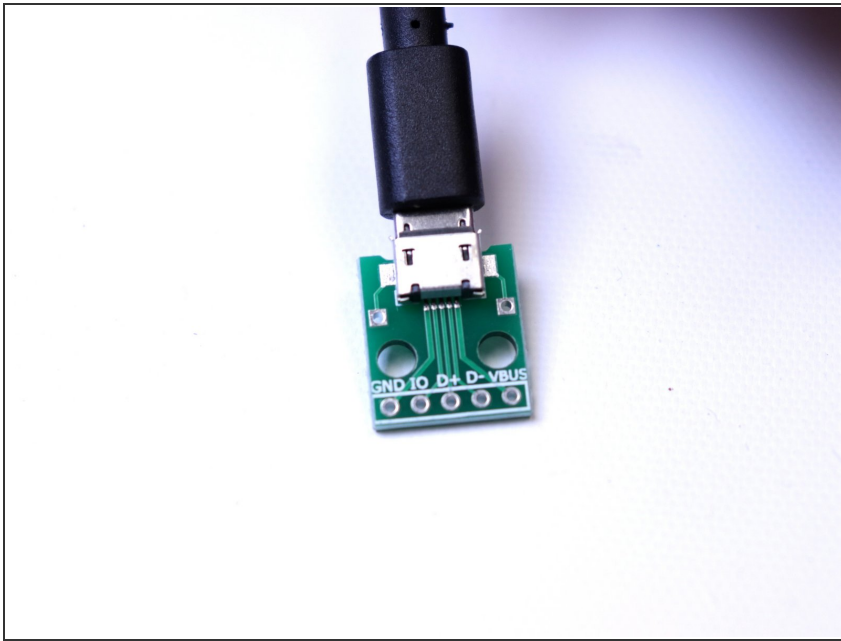
- [12v Power Supply](#) (1)
- [Slip Joint Pliers](#) (1)
- [6-in-1 Screwdriver](#) (1)
- [USB Micro Breakout Board](#) (1)
- [Multimeter](#) (1)



PARTS:

- [Fuse \(2.5 amp, 125 volt\)](#) (1)
- Match fuse from adapter*

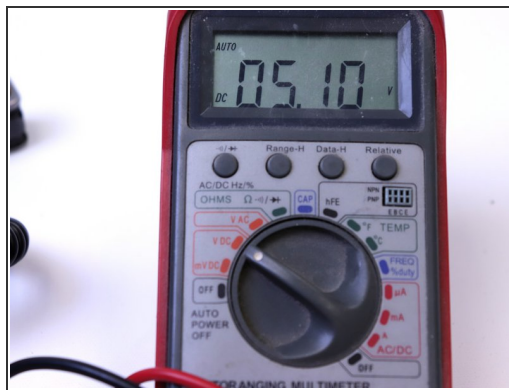
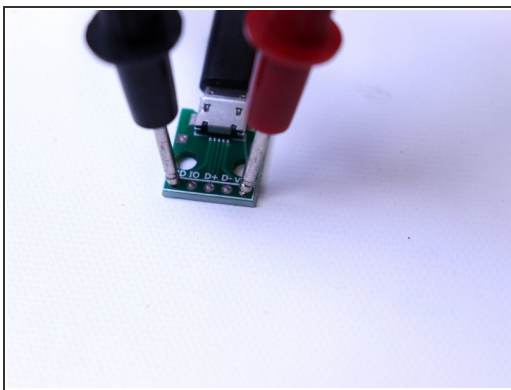
Step 1 — How to Troubleshoot Generic 1A USB Car Charger



- Insert the USB Micro end into the breakout, and insert the adapter into a power source, set for 12V (or automatic if in vehicle).

⚠ Caution: Since your device is connected to a power source, there is a low voltage current going through that could damage components.

Step 2

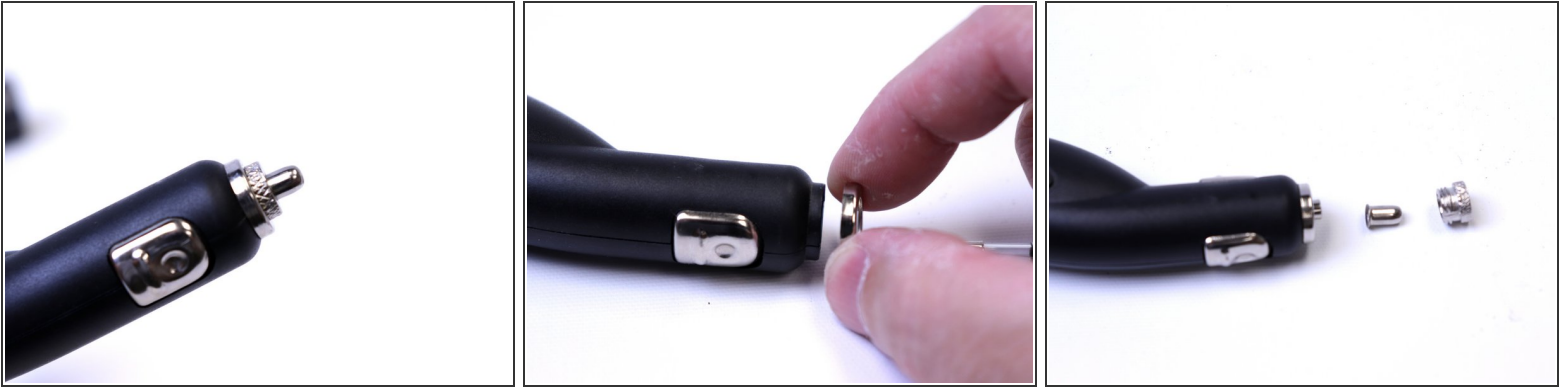


- Set the multimeter to VDC, and place the leads as shown.

i The voltage should be about 5V.

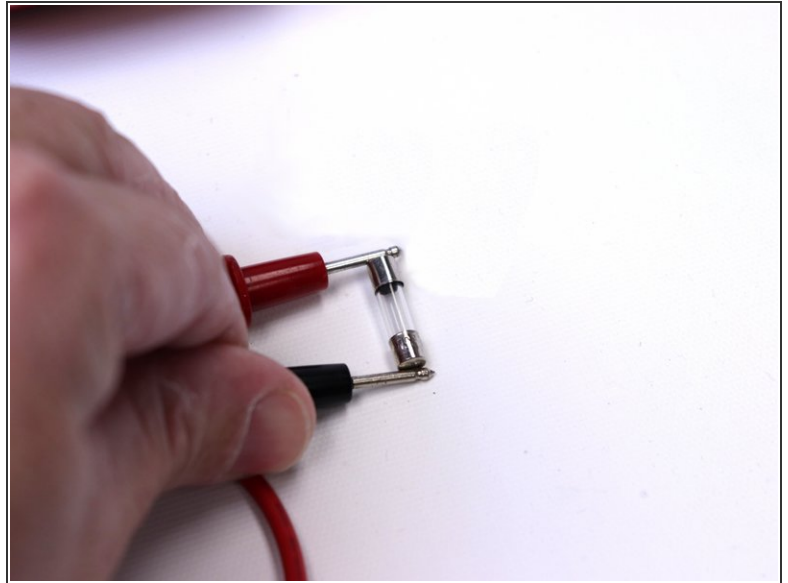
i If the voltage is lower, check the output of the power supply. If the power supply voltage is above 6V, then we will need to continue to Step 4.

Step 3



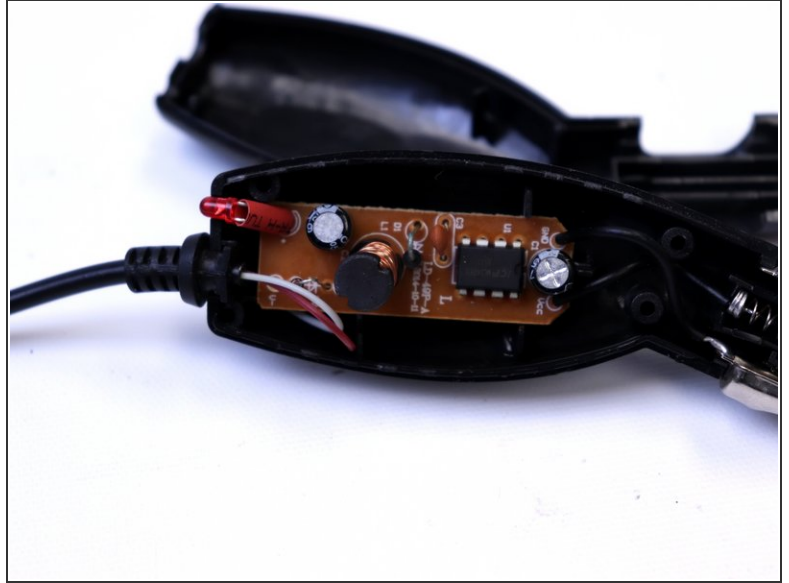
- Unscrew the tip to uncover the fuse.
 - Remove the fuse from the charger.
- ☒ Make sure to document the order that everything is unscrewed. This will be important for reassembly.

Step 4



- Set the multimeter to test continuity.
- Test to know how your meter reads a closed circuit.
- Test the fuse with the multimeter.
- If your fuse does not allow a current to flow, you will need to replace it.

Step 5



- If the fuse is allowing a current to flow, you may move on, opening the body of the charger.
- ⓘ Be aware, there may be small springs inside body.
- Look for small breaks in the small wires. Repair of these types of problems are outside the scope of this iFixit guide, but other guides may help.

To reassemble your device, follow these instructions in reverse order.