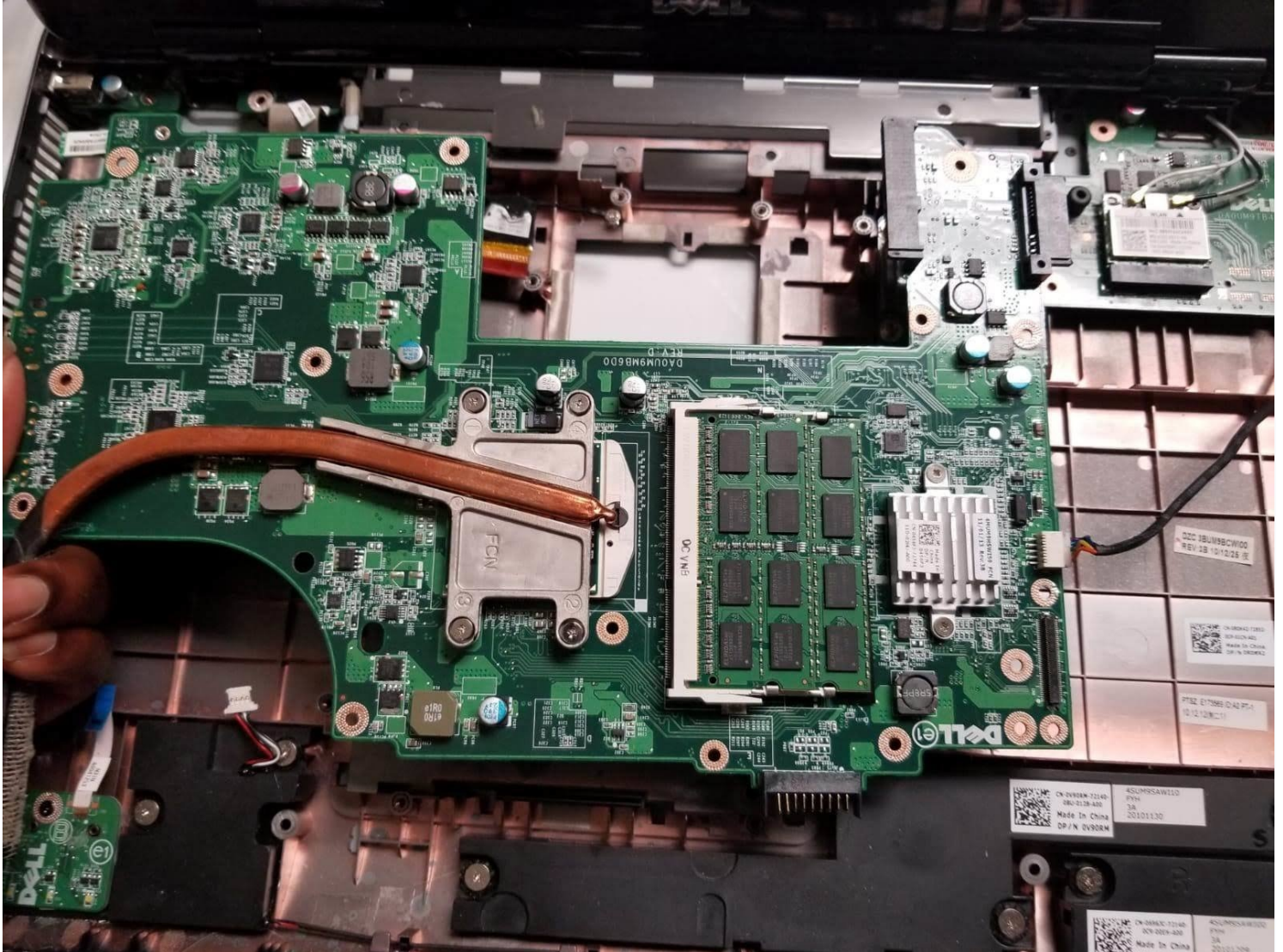




Dell Inspiron 17R-N7010 Motherboard Replacement

This guide demonstrates how to replace the...

Written By: frank scott



INTRODUCTION

This guide demonstrates how to replace the motherboard from your Dell Inspiron laptop (model #17R-N7010).

The motherboard is the main circuit board in the computer, which establishes connections between the various components, and allows communication between them.

The motherboard may need replaced if your computer experiences the following issues:

- Frequent screen freezes
- Programs failing to load
- Blue screen of death/ boot failure
- Not recognizing hardware (keyboard, mouse)
- Physical damage to motherboard (burns, chips)

Before beginning this repair, make sure your laptop is turned off and disconnected from the power adapter.

TOOLS:

[Spudger](#) (1)

[Phillips #0 Screwdriver](#) (1)

PARTS:

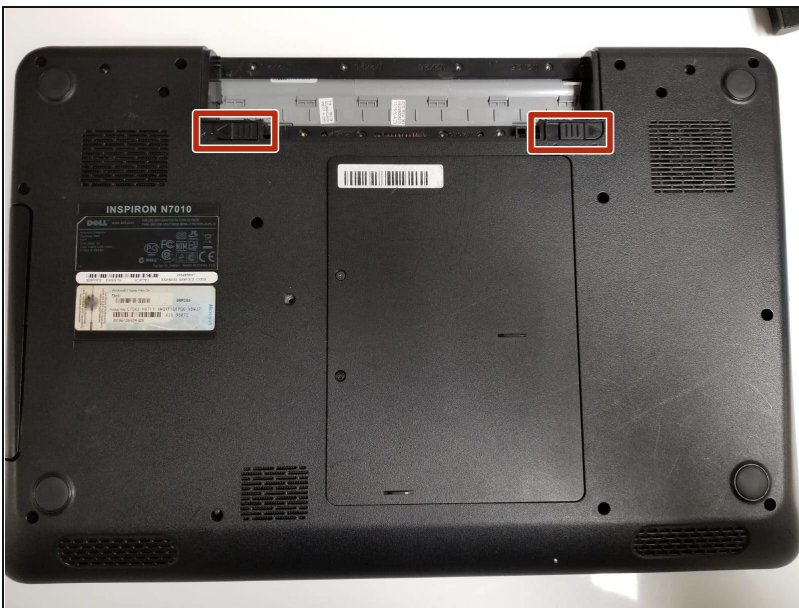
[Dell Inspiron 17R-N7010 Battery](#) (1)

Step 1 — Battery



- Flip over the laptop so the back is facing upwards.
 - Locate the battery compartment.
- ⚠ Make sure your laptop is turned off before disassembly.

Step 2



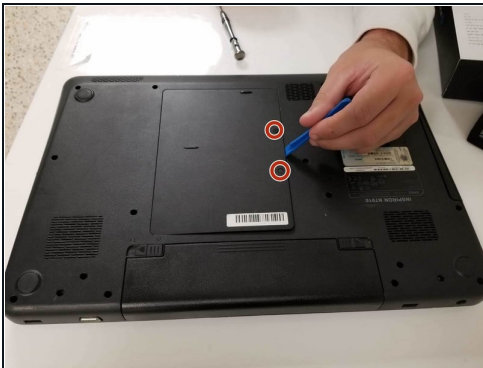
- Slide both locks away from the center of the battery.
- After you hear a click, pull out the battery.

Step 3 — Palm Rest



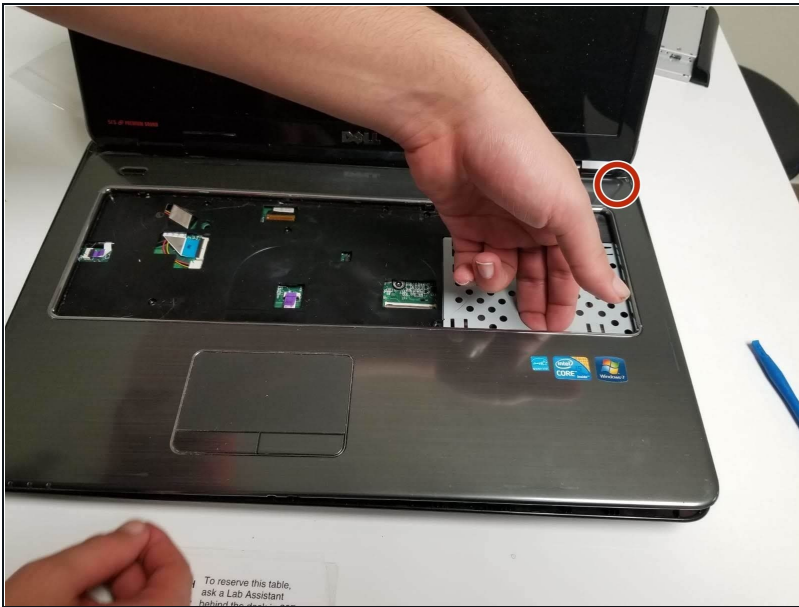
- Remove the four screws from the back panel.
- Flip the laptop over and open it to view the keyboard.
- Disconnect the keyboard from the laptop by lifting up the latch holding the ribbon cable in place.

Step 4



- Close the laptop and flip it over so the bottom is facing upwards.
- Remove the two screws from the small panel.
- Remove the small back panel.
- Slide the CD drive out of the laptop.
- Remove the three screws from the CD drive slot.

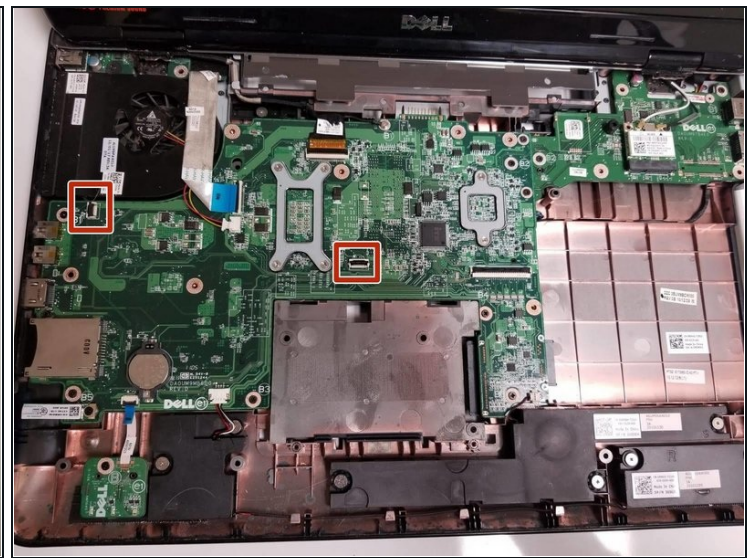
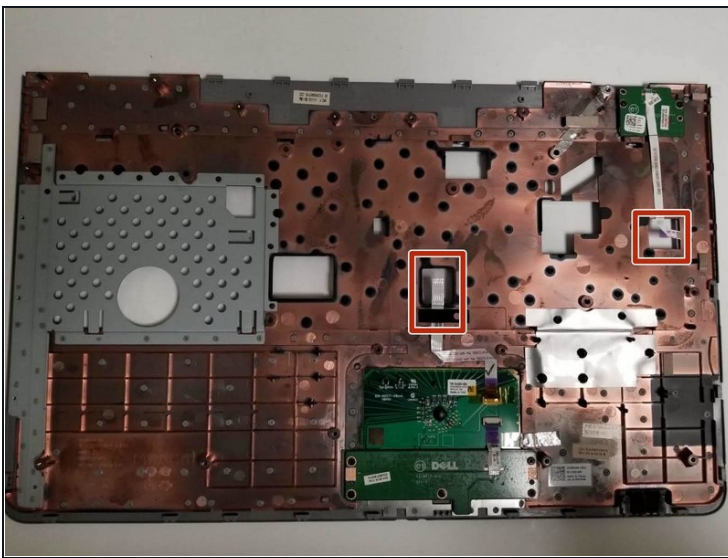
Step 5



⚠ This step is tricky and can feel like you are breaking the laptop. Follow the next steps with caution to avoid damaging the laptop.

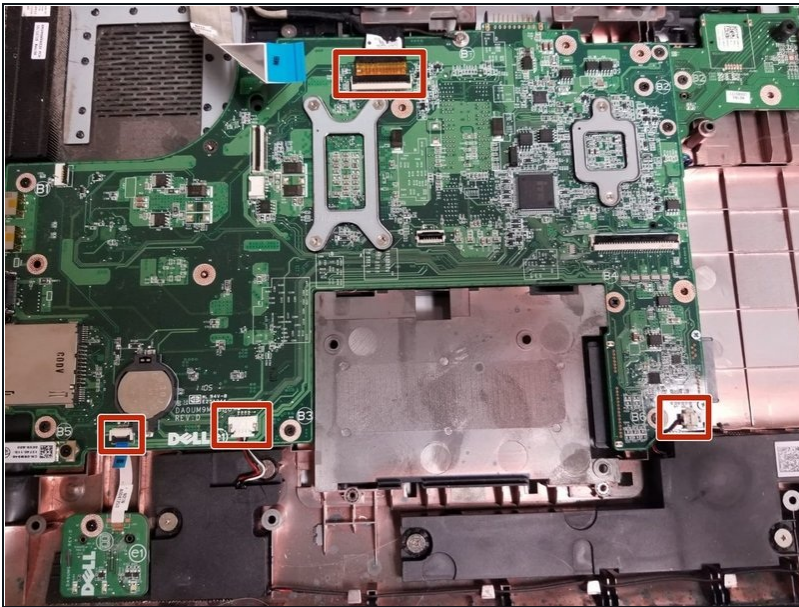
- Remove the top cover by inserting a spudger under the surface.
- Working clockwise, pry upwards with the spudger to detach the clips.

Step 6



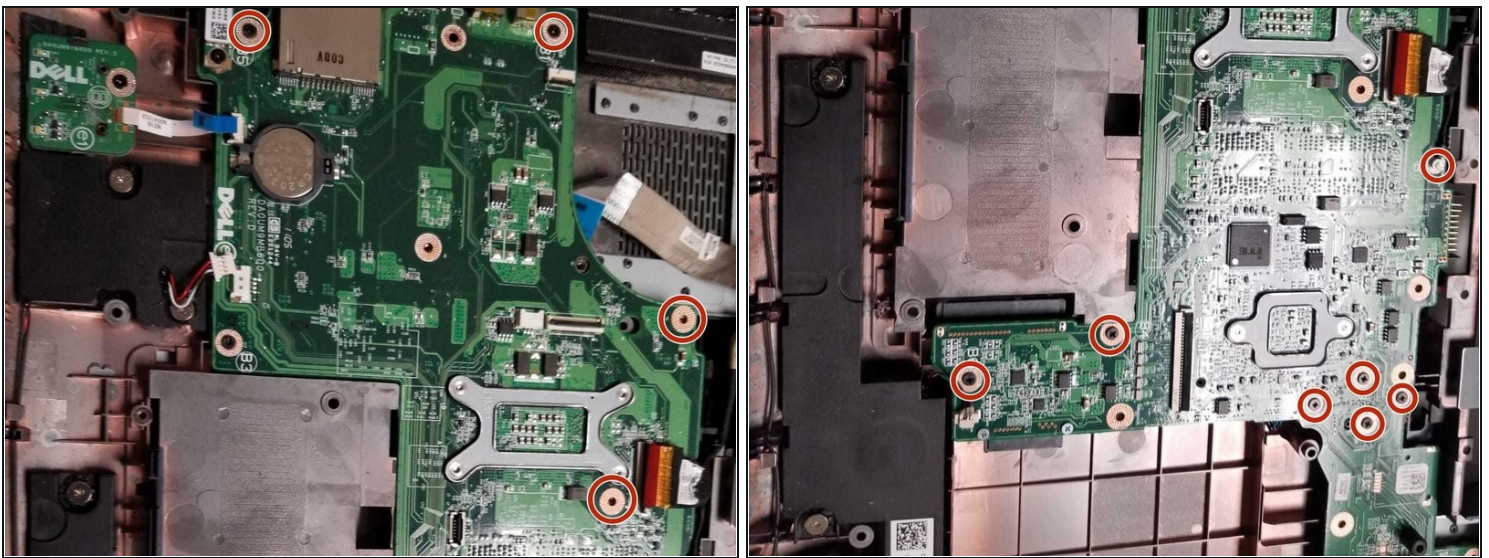
- Disconnect the ribbon cables.
- Remove the cover to access the inner hardware of the laptop.

Step 7 — Motherboard



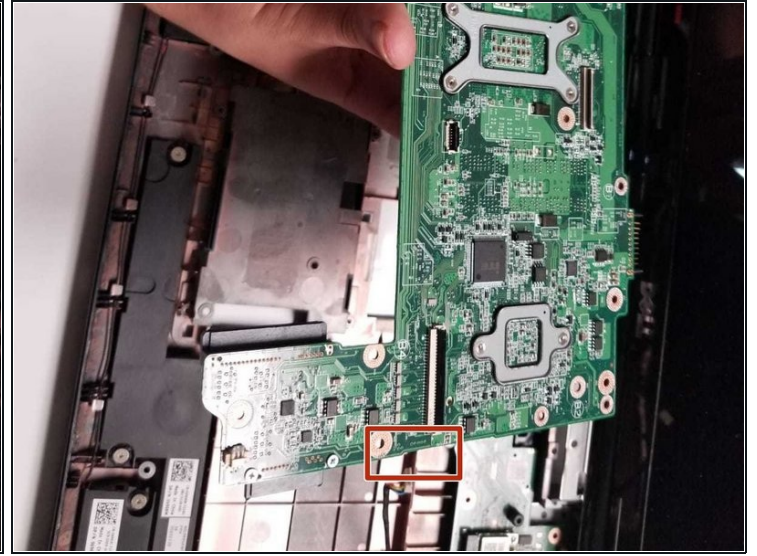
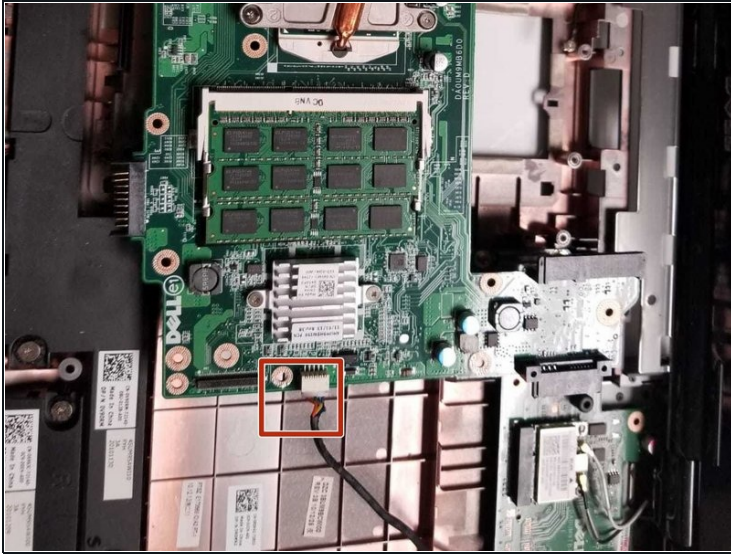
- ⚠ Make sure the SIM card has already been removed. If not, remove it now.
- Carefully unplug the four ports connecting to the computer (the prying tool may come in handy when using it on the ports).

Step 8



- Remove all 10 screws on the motherboard using the Phillips #0 screwdriver.

Step 9



- Carefully lift the motherboard at an angle, and slowly pull out the final port.
- ① You will find the port on the bottom of the motherboard shown in the first picture.

To reassemble your device, follow these instructions in reverse order.