

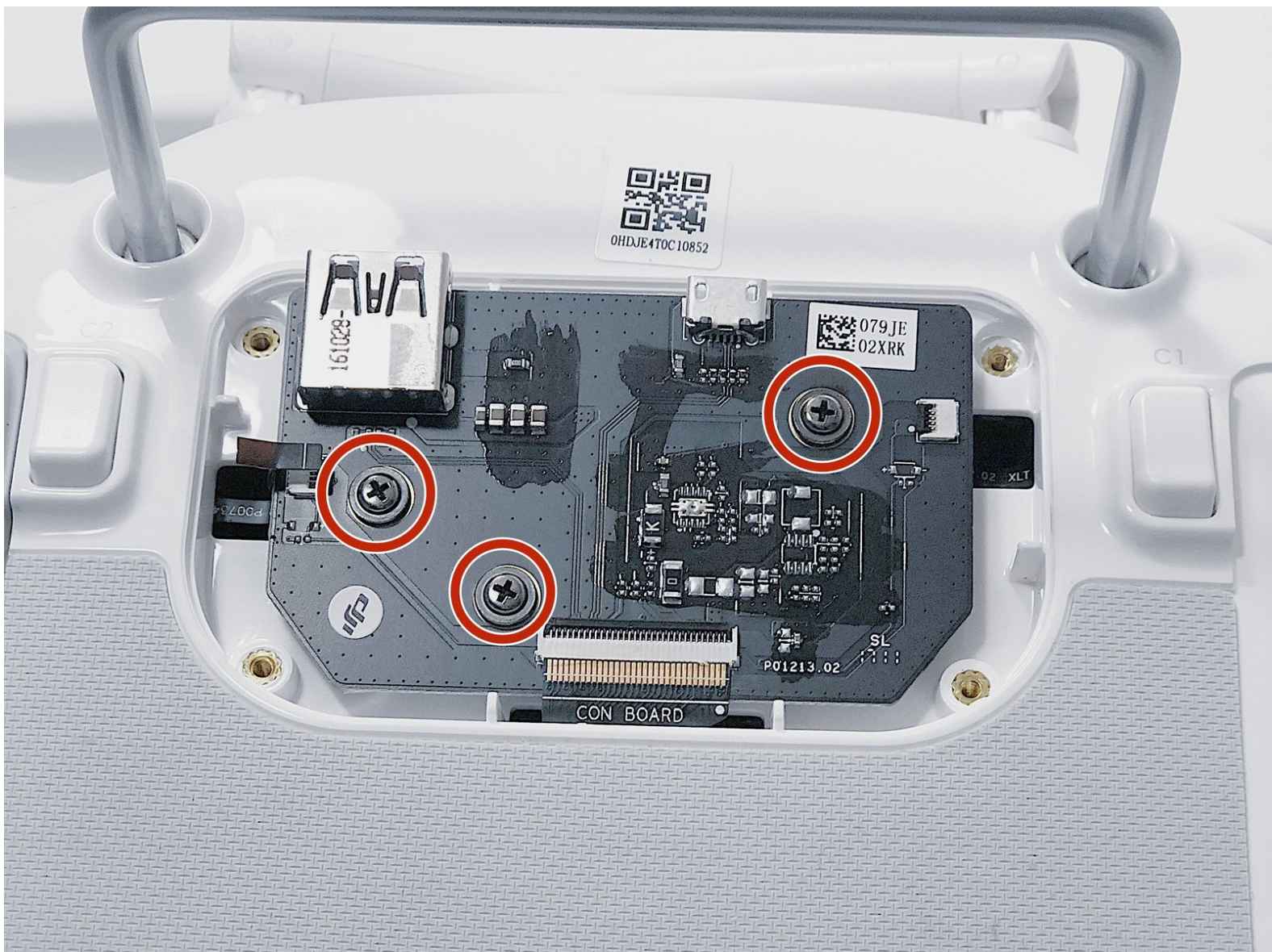


# DJI Phantom 4 Advanced Remote Controller

## Back Con Board Replacement

This guide will show you how to replace the con board in the DJI Phantom 4 Advanced Remote Controller.

Written By: Gunnar Behny



## INTRODUCTION

The Con Board is located under the back cover. This guide will help you remove and replace the Back Con Board from your DJI Phantom 4 Advanced Remote Controller.

Many issues that arise with a DJI Remote Controller are caused by a faulty Back Con Board.

Before beginning, disconnect your drone and power off the remote completely.



### TOOLS:

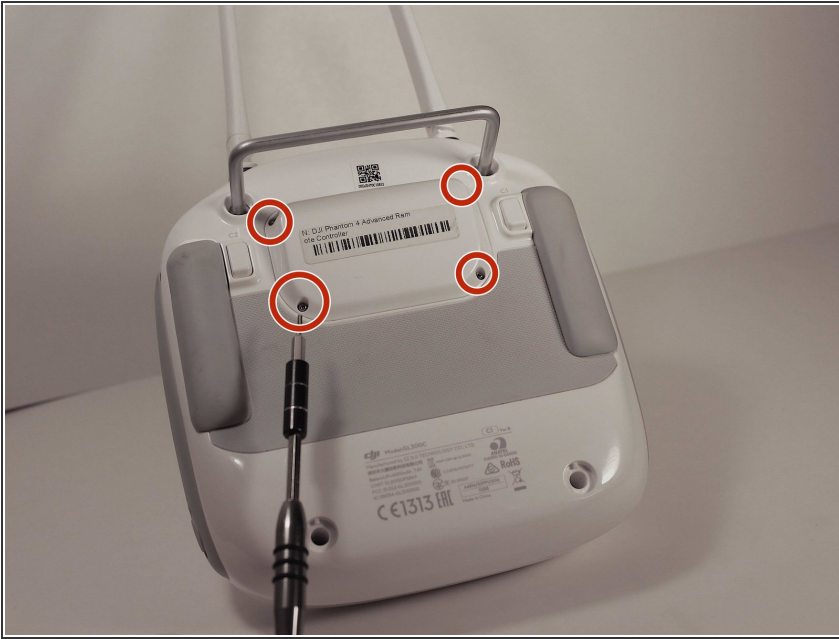
- [Spudger](#) (1)
- [Tweezers](#) (1)
- [T8 Torx Screwdriver](#) (1)
- [Phillips #0 Screwdriver](#) (1)



### PARTS:

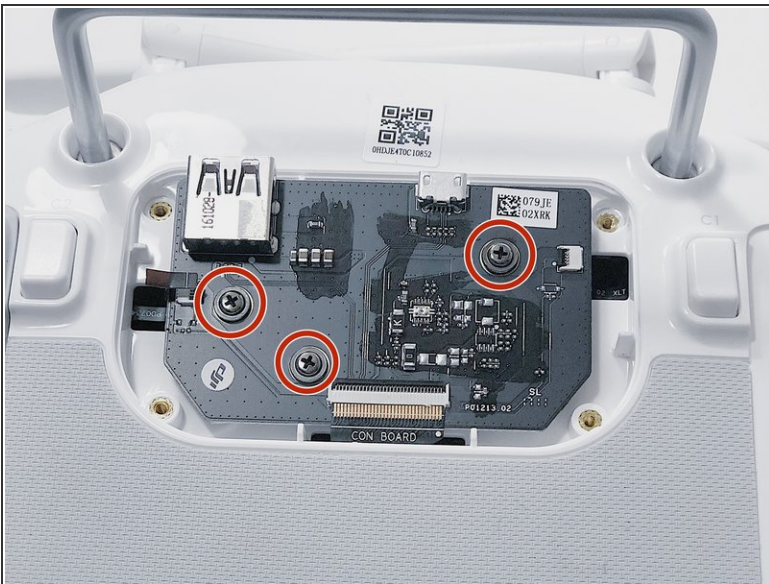
- [DJI Phantom 4 Advanced Remote Controller Lower Shell](#) (1)

## Step 1 — Back Panel



- Remove the four screws with a Torx T8 screwdriver to access the back con board.

## Step 2



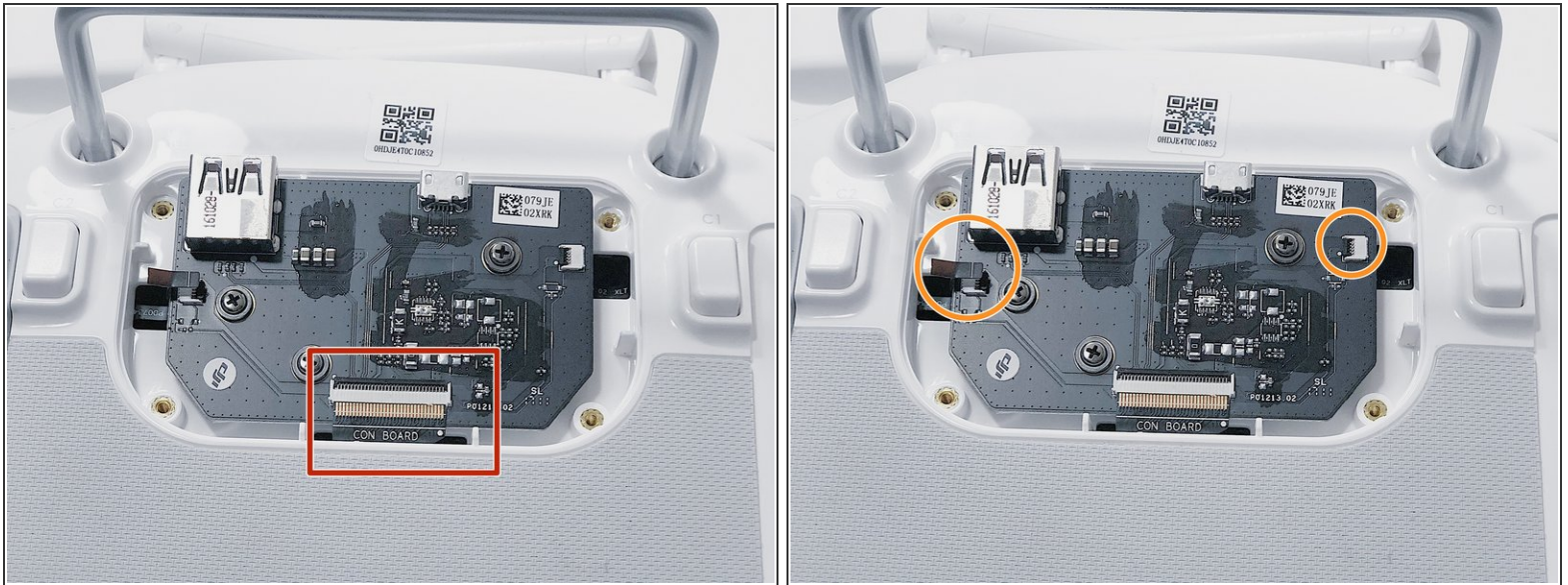
Phillips #00 screwdriver.



- Remove three screws using a Phillips #00 screwdriver.

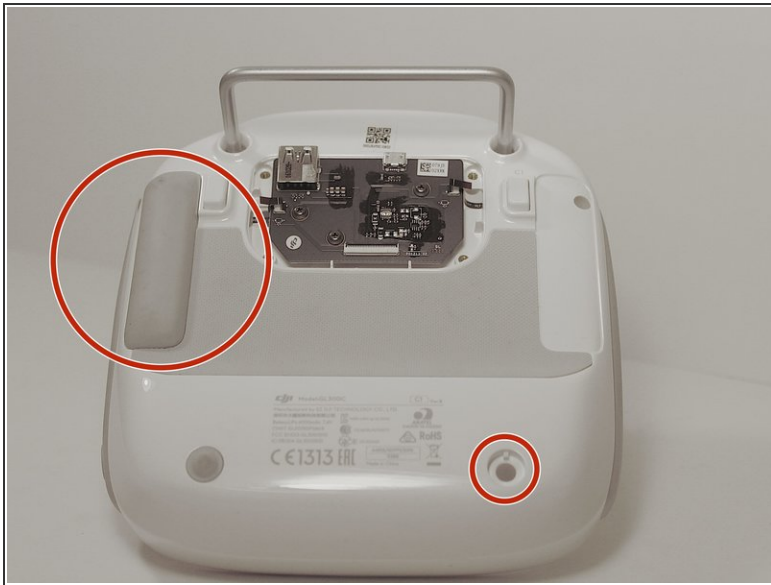


## Step 3



- With tweezers, gently remove the large con board tab.
- Use your hands to remove the two small clips. Pull out from the socket, in a horizontal direction.

## Step 4

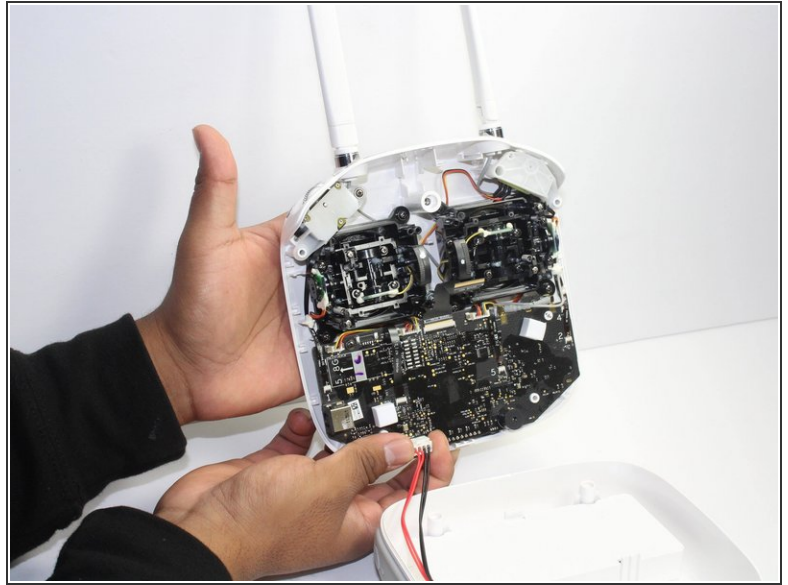


- Peel off the rubber grips to access the screw holes.

**⚠ Make sure to save your grips and do not get them stuck to anything, you are going to want to save the adhesive.**

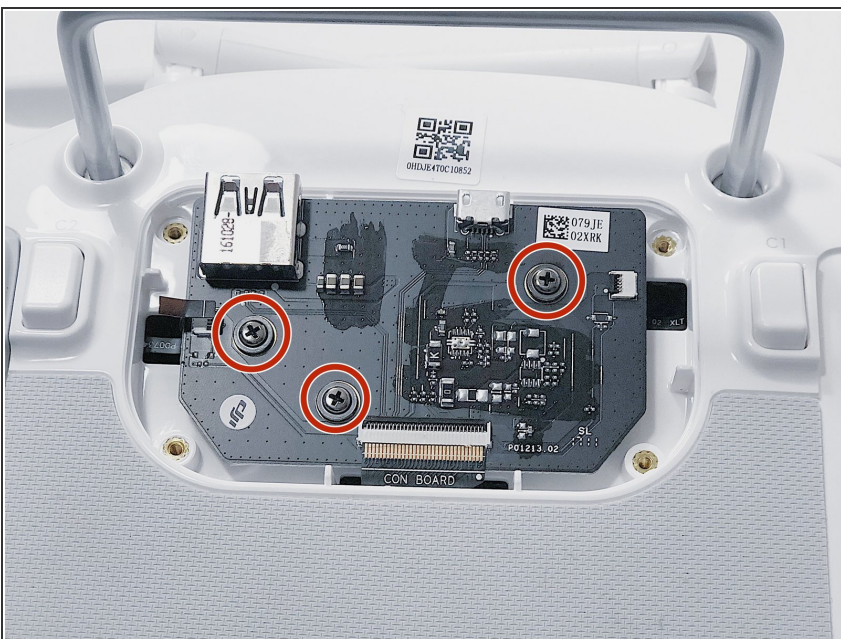
- Remove the back board and set it aside.

## Step 5



- Pull apart the back plastic panel.
- ⓘ Recommended tool for this would be the metal spudger, but not required.
- Once the back panel is off, you will have access to the motherboard.

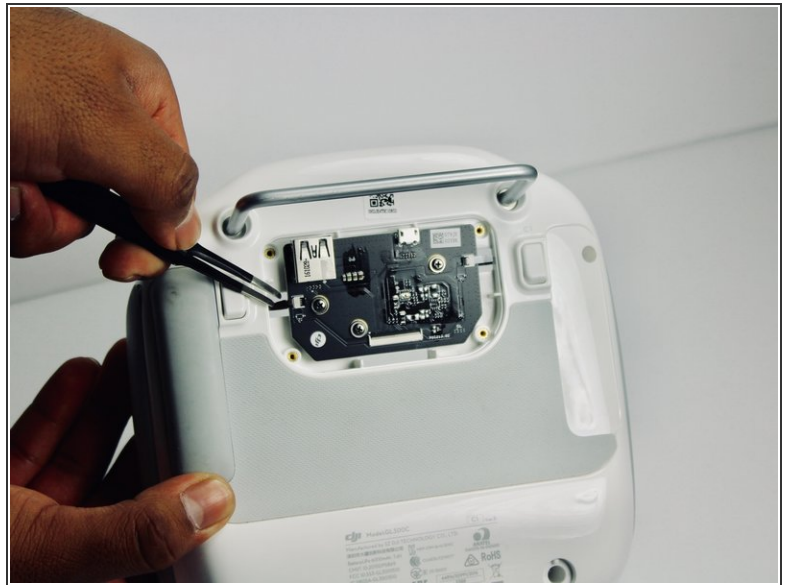
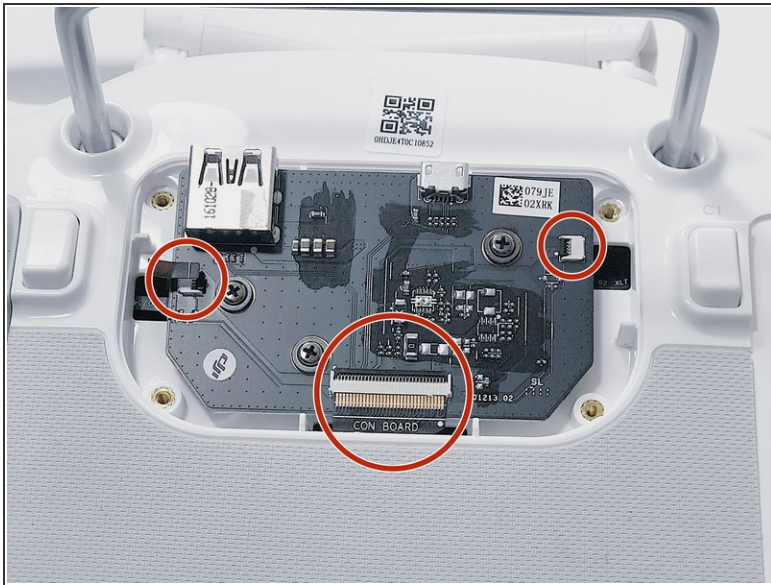
## Step 6 — Back Con Board



- Remove the three PH0 screws securing the PCB to the remote.

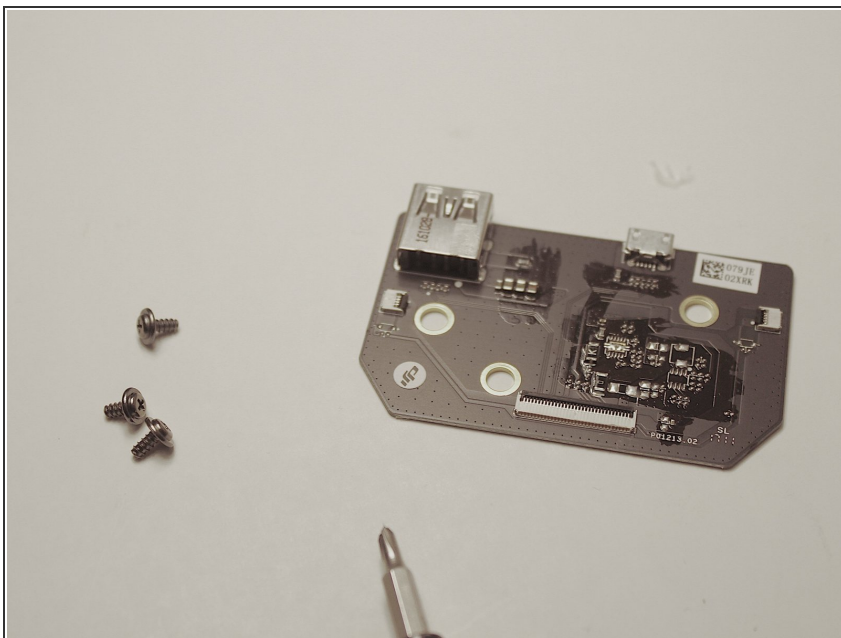



## Step 7



- Remove each of the three ribbon cables from their tabs by pulling in a horizontal direction away from the socket.
- Remove the Back Con Board.

## Step 8



 The board can now be replaced.

To reassemble your device, follow these instructions in reverse order.