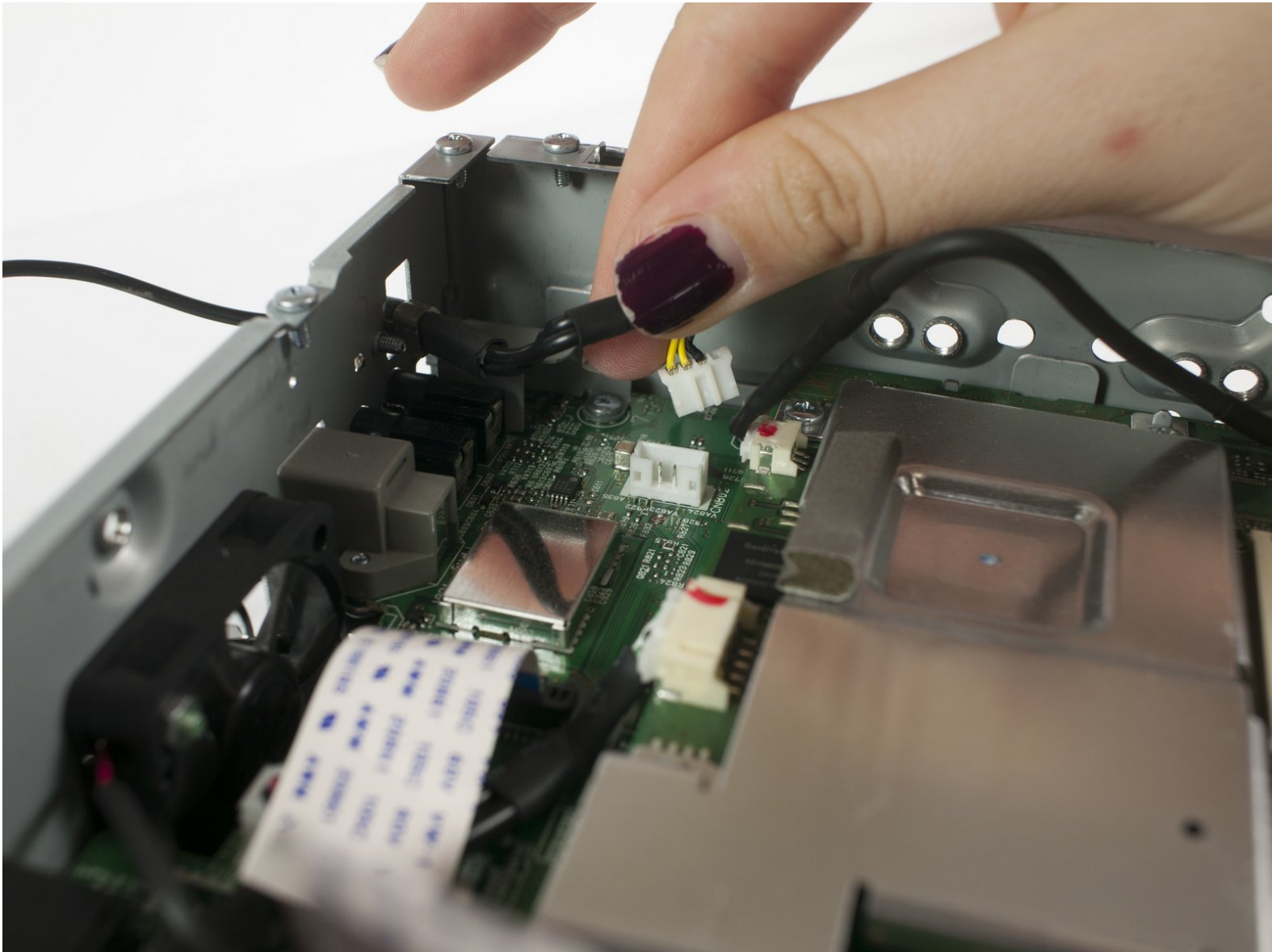




JVC KW-V820BT Rear Panel Removal and Replacement

Steps to repair and replace the fan in the JVC KW-V820BT audio device.

Written By: Roxanne Shelton



INTRODUCTION

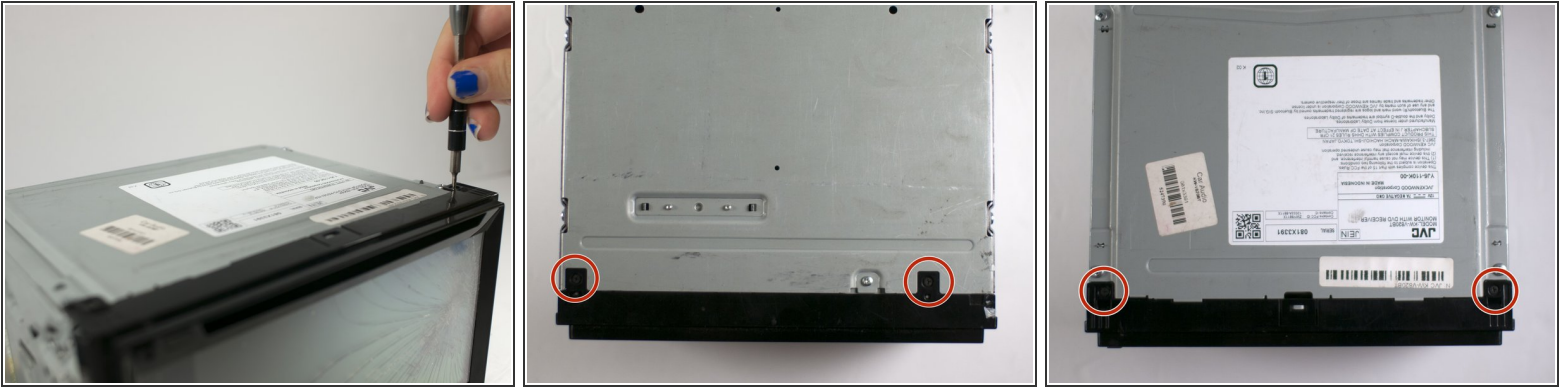
The removal of the rear panel will allow you to access additional, serviceable components within the device.



TOOLS:

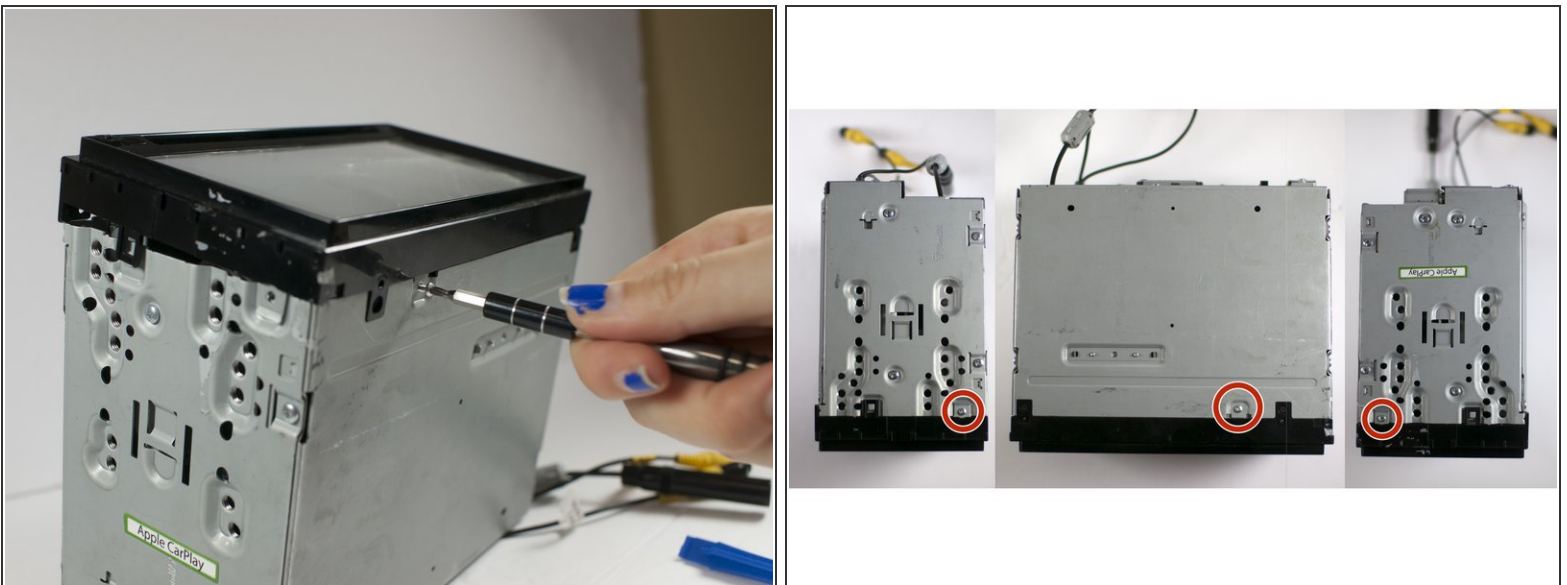
- [Phillips #00 Screwdriver](#) (1)
 - [Phillips #0 Screwdriver](#) (1)
 - [Spudger](#) (1)
 - [Metal Spudger](#) (1)
-

Step 1 — Front Panel Assembly



- Remove the four 1/8-inch black machine screws using a Phillips #00 screwdriver.

Step 2



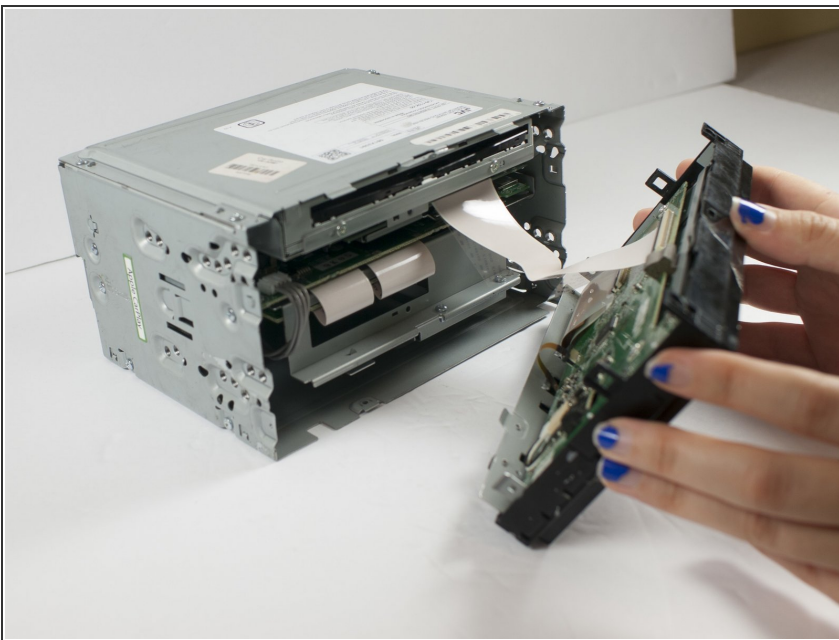
- Remove three steel-finish, pan-head, 1/64 x 3/16" machine screws identified in the photograph, using the Phillips #0 screwdriver.

Step 3



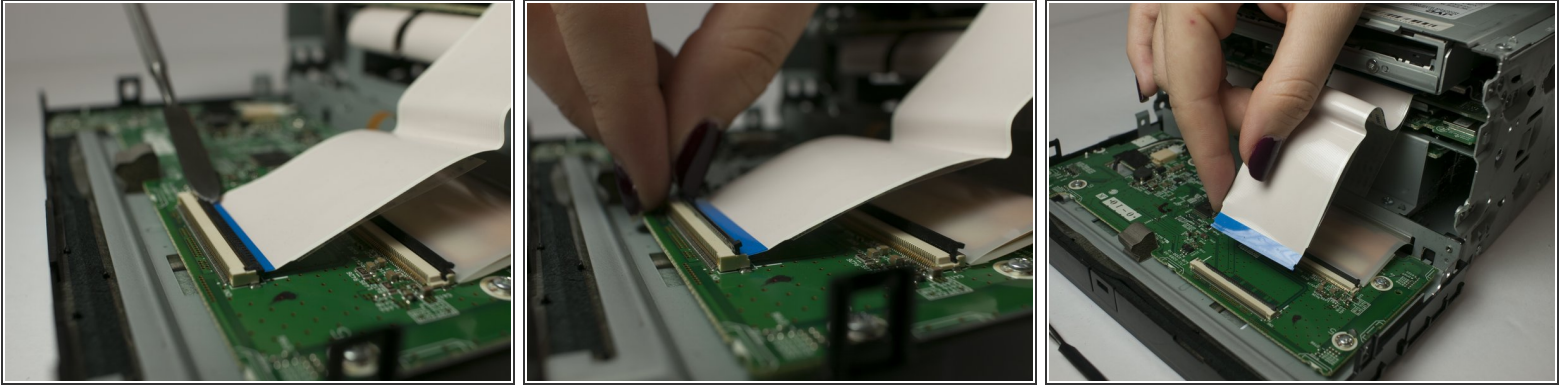
- Using your fingers and/or a metal spudger, gently release the plastic locking tabs of the front panel assembly from the steel enclosure while prying the front panel assembly away from the steel enclosure with your fingers.

Step 4




- Gently remove the front panel from the steel enclosure.

Step 5



- Gently separate the ribbon cable from from ZIF connector on the circuit board using a metal smudger.

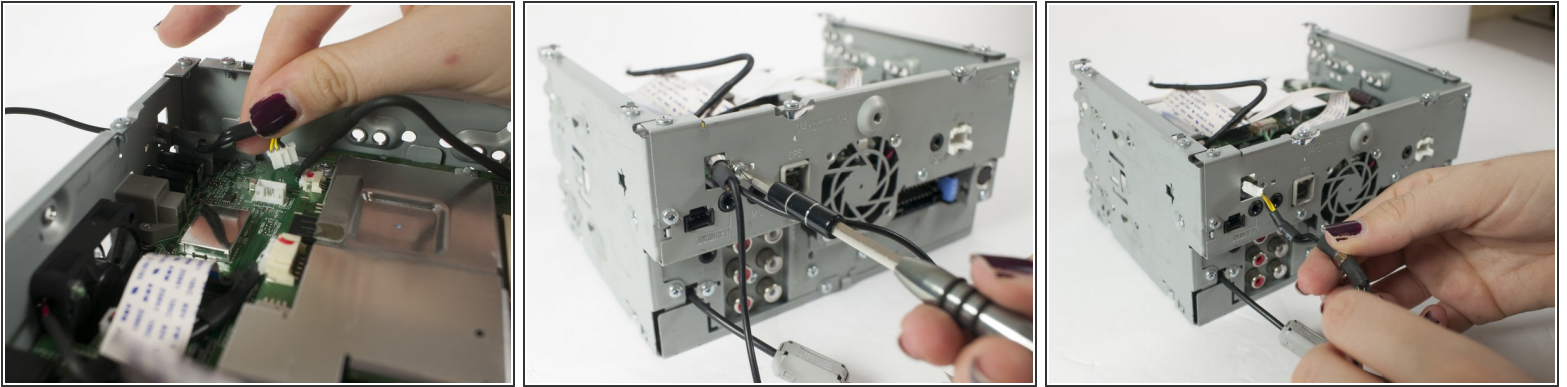
 Be careful not to scratch or damage components or features of the circuit board with the metal spudger

Step 6 — Top Panel Removal



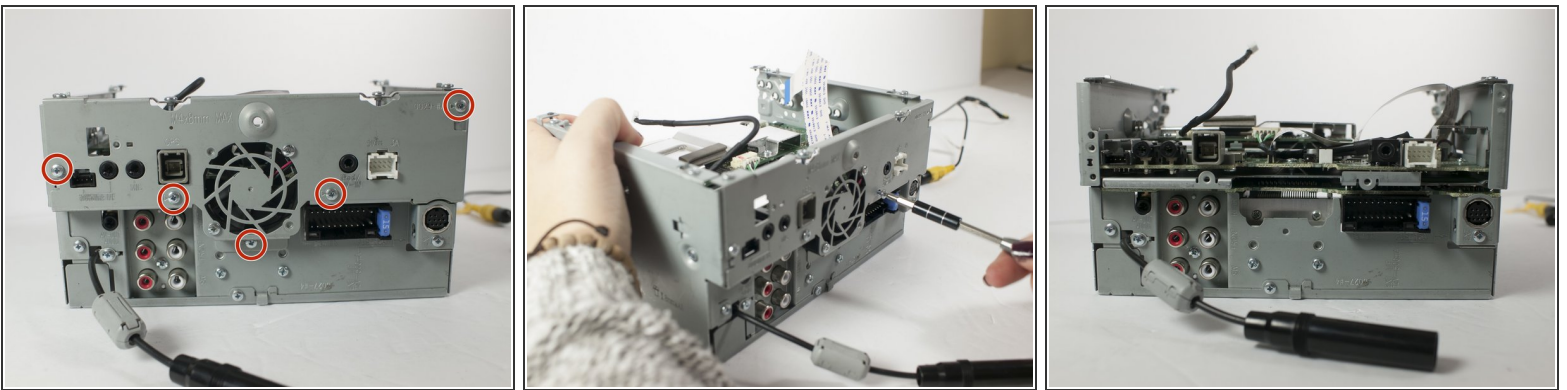
- Remove seven 1/64 x 3/16" screws from the top panel using the Phillips #0 screwdriver.
- Remove the top panel.

Step 7 — Rear Panel Removal and Replacement



- Disconnect Video Out/Rear View Camera cable from circuit board.
- Remove the Video Out/Rear View Camera cable retaining clip using after removing 0-64 x 3/16" machine screw using a Phillips #0 screwdriver.
- Withdraw Video Out/Rear View Camera cable from rear panel.

Step 8



- Remove the five 1/64 x 3/16" machine screws from the rear panel identified in the photograph.
- Remove rear panel.

To reassemble your device, follow these instructions in reverse order.