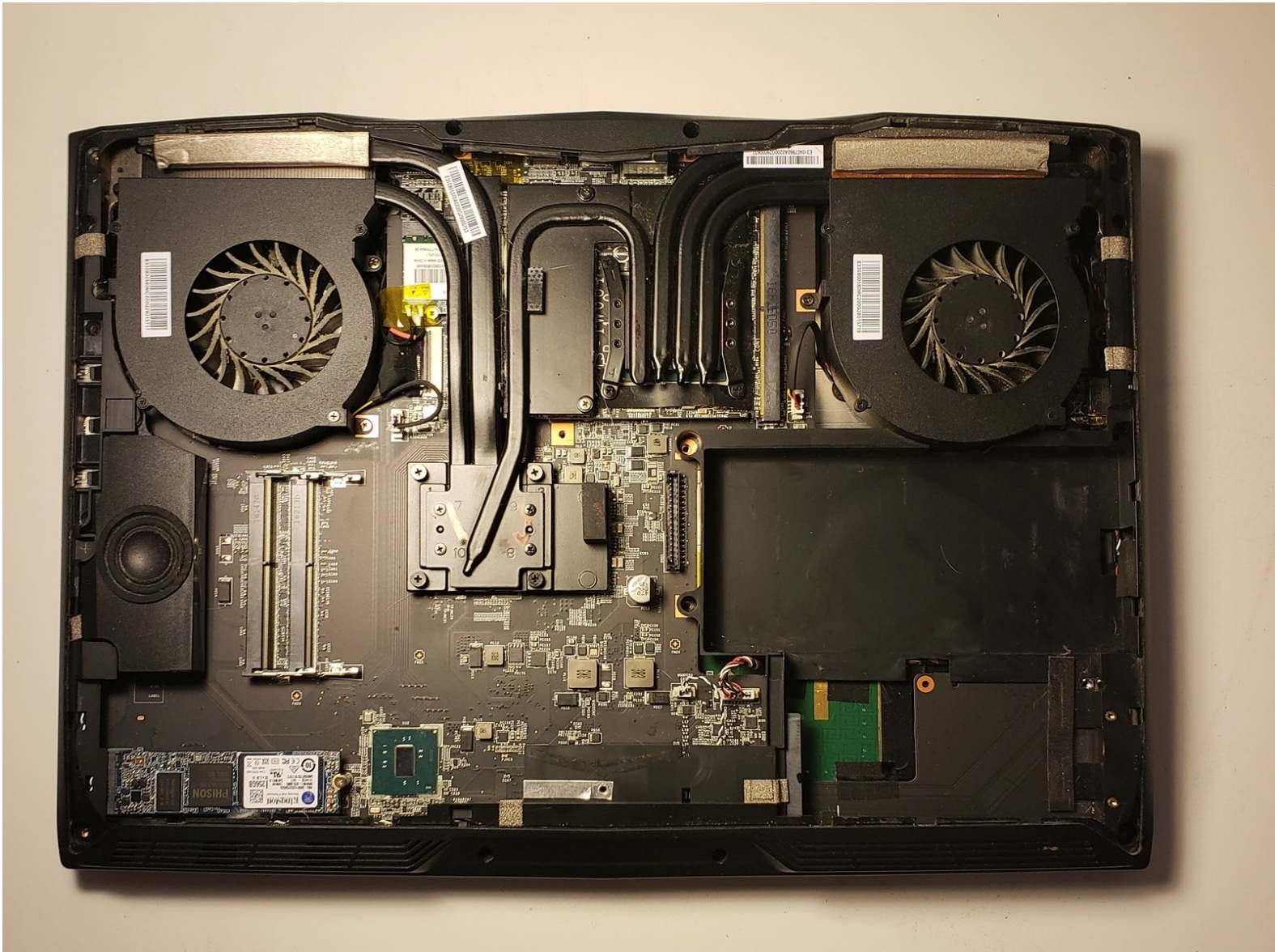




MSI GT62VR 6RD Dominator M.2 SSD Replacement

This guide will show how to remove the M.2 SSD on the MSI GT62VR 6RD Dominator.

Written By: Matthew Berberich



INTRODUCTION

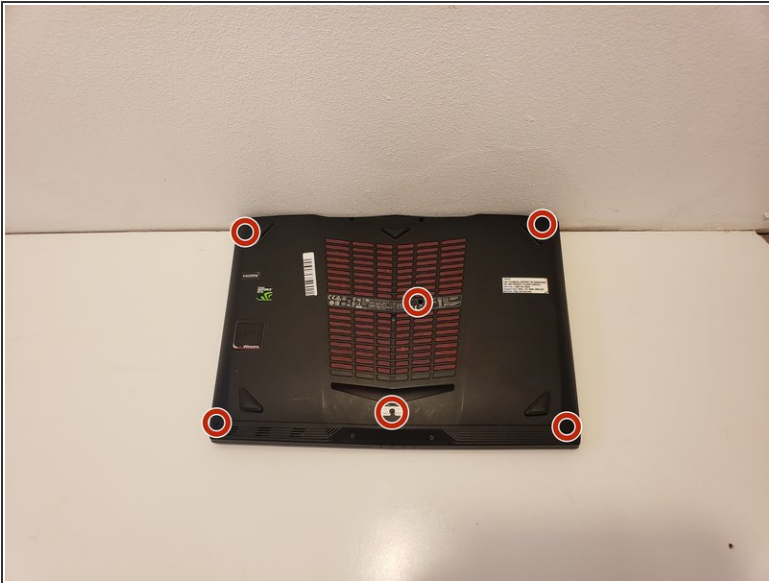
This troubleshooting guide will give step-by-step instructions on how to replace the M.2 SSD on your MSI GT62VR 6RD Dominator laptop. This troubleshooting guide has no special requirements or potential hazards. It is recommended to replace your SSD if you experience a few of the following: data corruption, slow read/write speeds, bad sector errors. Little to no risk of injury is involved to complete these guide steps and is not time consuming to complete.



TOOLS:

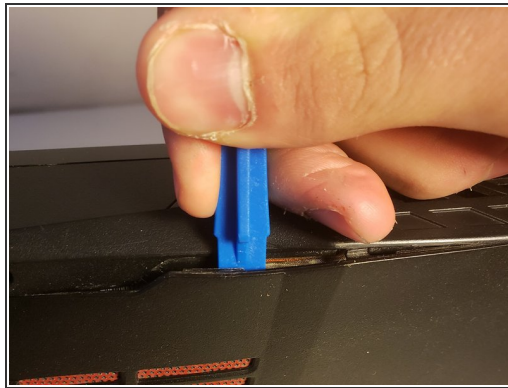
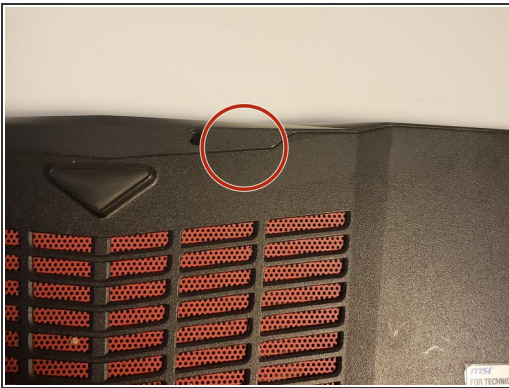
- [iFixit Opening Tools](#) (1)
 - [JIS #0 Screwdriver](#) (1)
-

Step 1 — M.2 SSD



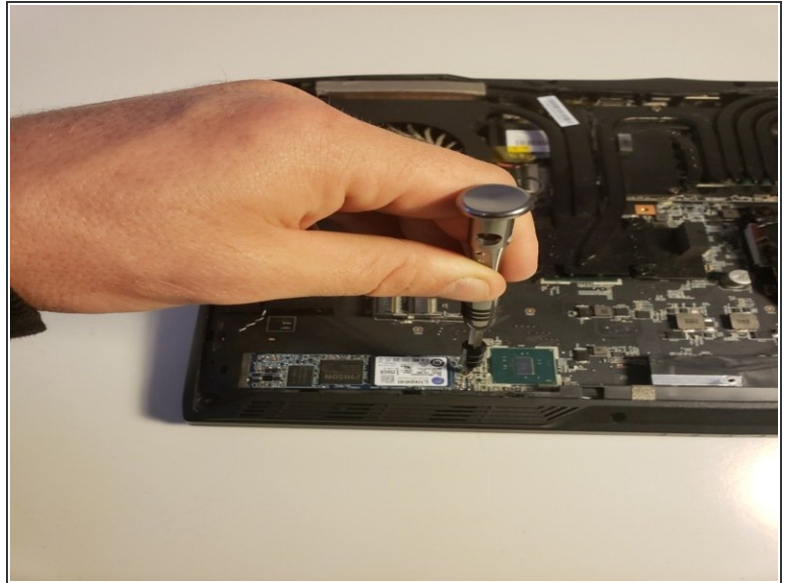
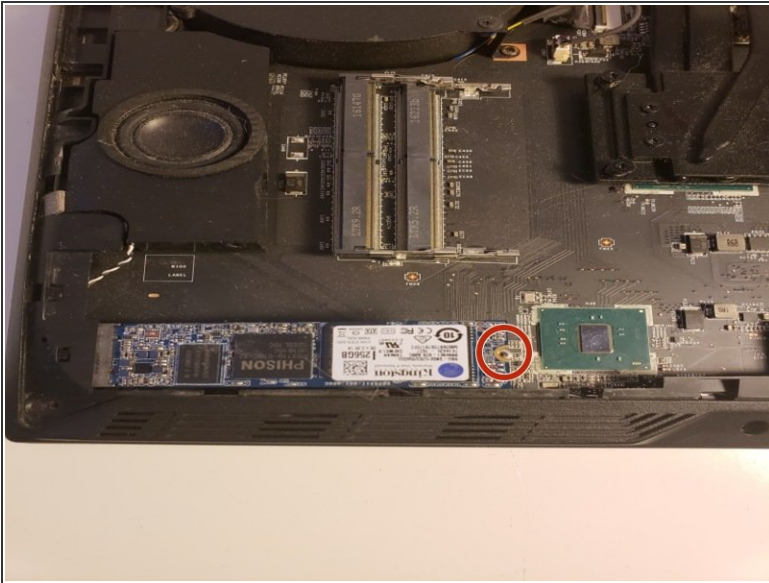
- Remove the six 1.2mm screws on the bottom plate of the laptop using a JIS #0 screwdriver.

Step 2



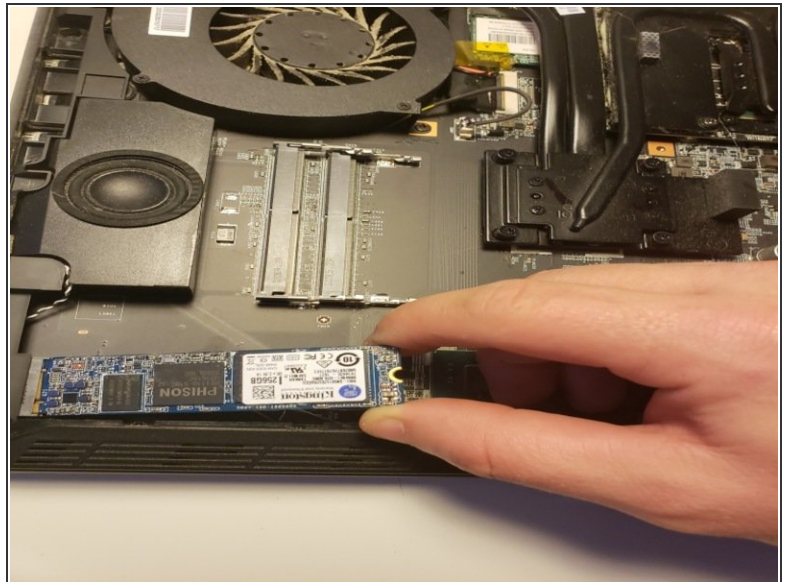
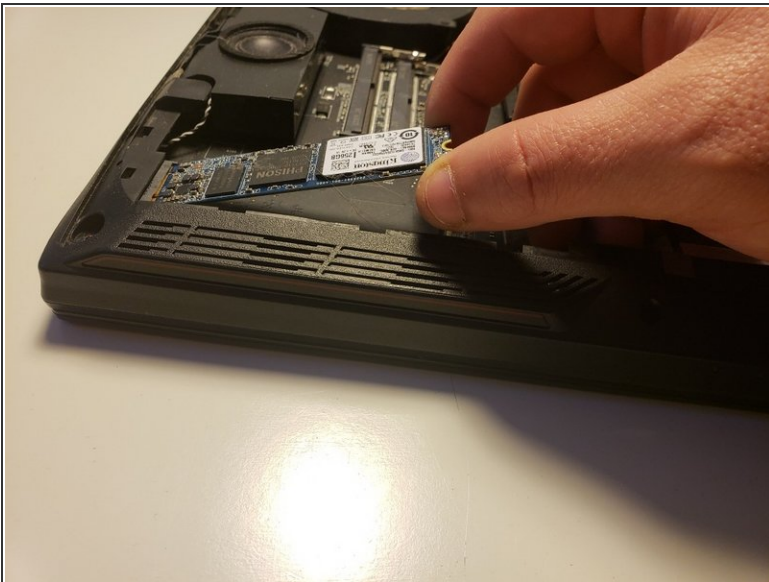
- Insert the plastic opening tool into the seam on the backplate of the laptop.
- ⚠ A popping sound will be produced from your device while you remove the backplate.
- Pry the back plate up.
- Slide the plastic opening tool around the laptop's edge slowly until the backplate is completely removed.

Step 3



- Remove the single 1.2mm screw securing the SSD to the laptop using the JIS #0 screwdriver.

Step 4



- Remove the old SSD, then insert and screw in the new one.

To reassemble your device, follow these instructions in reverse order.