



# Samsung Galaxy Core Prime Home Button Replacement

This guide will help users replace their Samsung Galaxy Core Prime home button.

Written By: Kate Vogel



---

## INTRODUCTION

A common problem you may have with the Samsung Galaxy Core Prime is a sticky or broken home button. Rather than go somewhere to fix it you can use this guide to help you remove or readjust the button. You will need tweezers, a heat gun or hair dryer, a Phillips #00 screwdriver, and an iFixit Opening Tool.



### TOOLS:

- [Heat Gun](#) (1)
  - [iFixit Opening Tools](#) (1)
  - [Tweezers](#) (1)
  - [Phillips #00 Screwdriver](#) (1)
-

## Step 1 — Battery



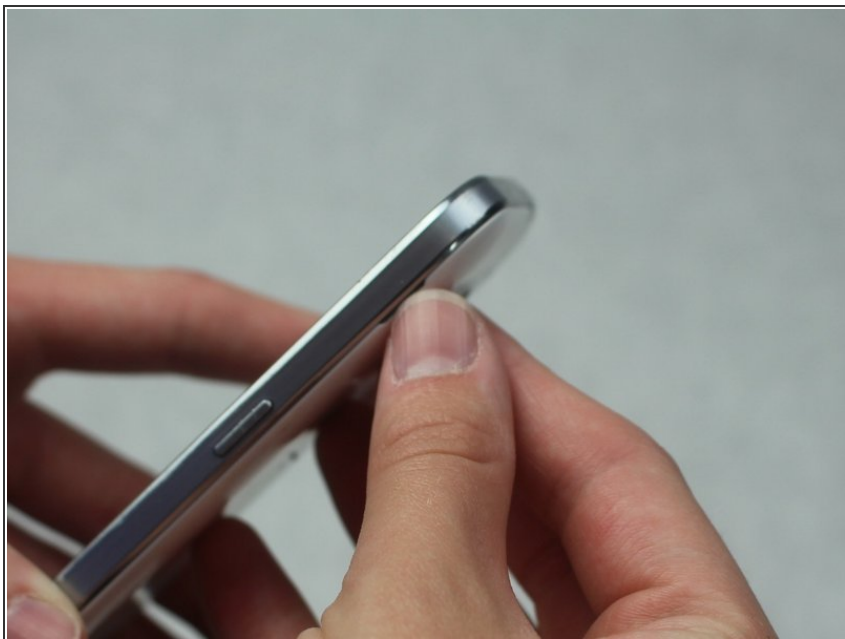
- Turn the smartphone off by using the power button on the right-hand side.

## Step 2



- Turn the smartphone over so that the rear camera is face up.

## Step 3



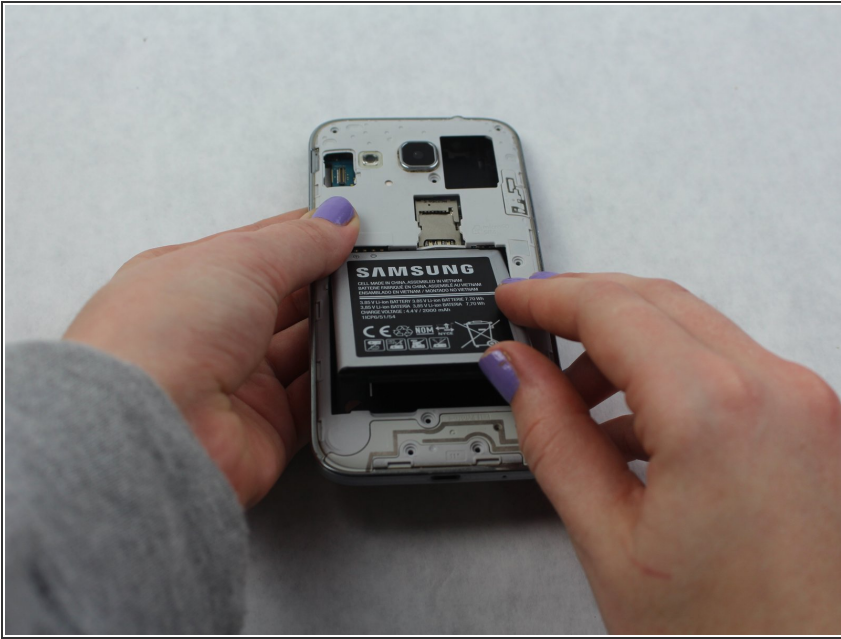
- Use your fingernail or a flat tool to lift the back cover.

## Step 4



- Locate the battery near the bottom of the phone. The battery is square, flat, and is labeled 'SAMSUNG'.

## Step 5



- Use your fingernail or a flat tool to lift the battery out.

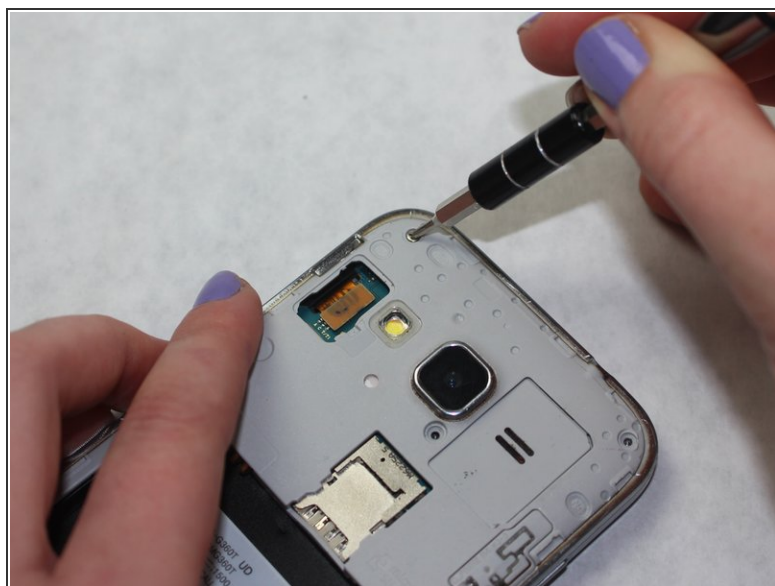
## Step 6 — Home Button



- Use your thumb to remove the sim card.



## Step 7



- Use a Phillips #00 screwdriver to remove the eight 4 mm screws that secure the midframe.

## Step 8



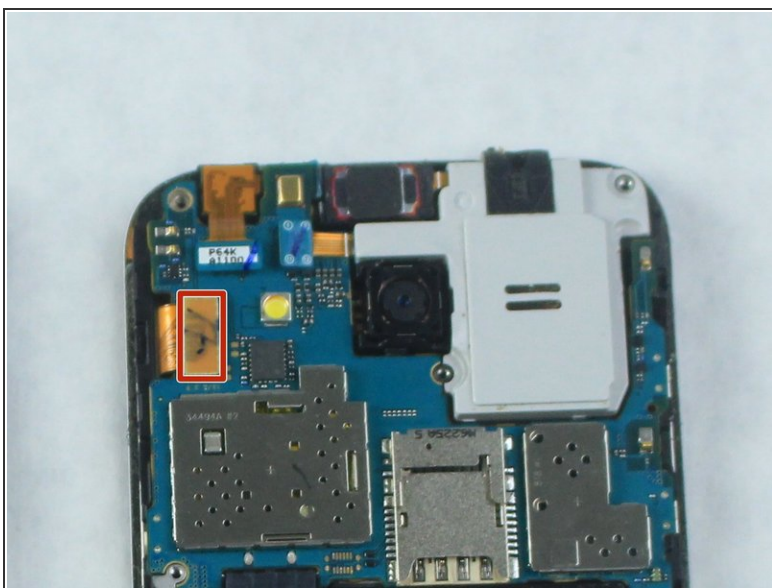
- Heat the frame with a hair dryer or heat gun. Do this until the adhesive is loosened.
- ⚠ Take care when using these heating tools.

## Step 9



- Use a flat tool or the [iFixit Opening Tool](#) to lift the midframe.

## Step 10



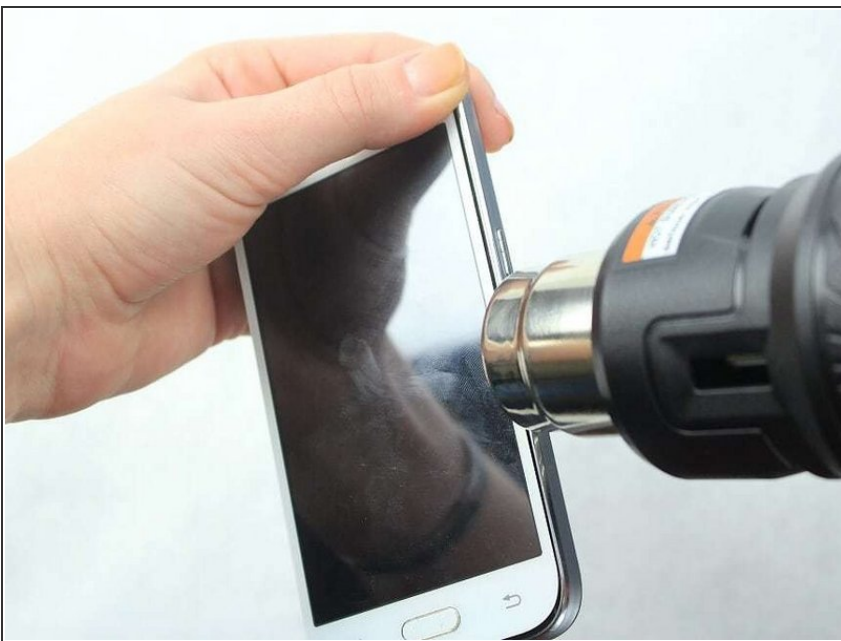
- Disconnect the LCD screen/touch screen ribbon from the motherboard using tweezers.

## Step 11



- Lift the motherboard out using the [iFixit Opening Tool](#).

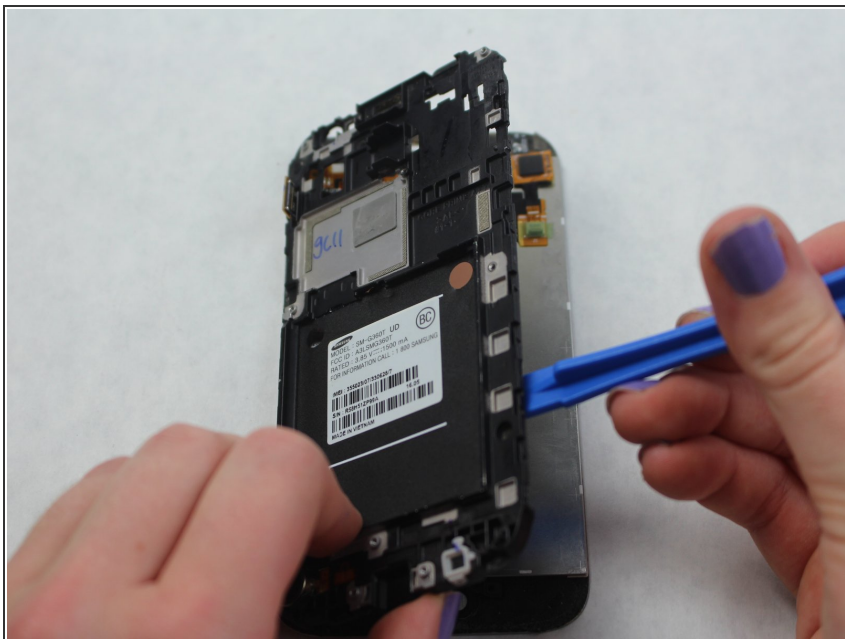
## Step 12



- Heat the sides of the screen with a heat gun or hair dryer.

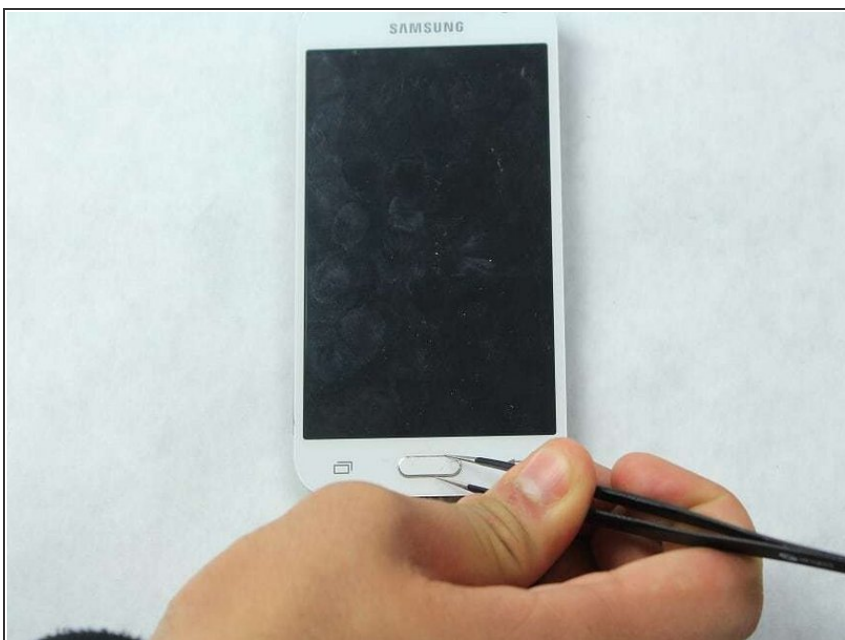


## Step 13



- Use the [iFixit Opening Tool](#) to remove the plastic panel that separates the motherboard and the screen.

## Step 14



- Use tweezers to remove the home button.

To reassemble your device, follow these instructions in reverse order.