



# Nokia Lumia 925 Front Camera Replacement

Written By: O'Ryan Lacour



---

## TOOLS:

TR7 Torx Security Screwdriver (1)

T5 Torx Screwdriver (1)

iFixit Opening Tool (1)

Tweezers (1)

ESD Safe Blunt Nose Tweezers (1)

---

### Step 1 — Motherboard



- Remove the sim card holder by inserting [tweezers](#) into the hole. Push down and the holder will spring back up.
  - Pull out the holder until it is completely separate.
- ① Something like a paperclip will work if there are no tweezers available.

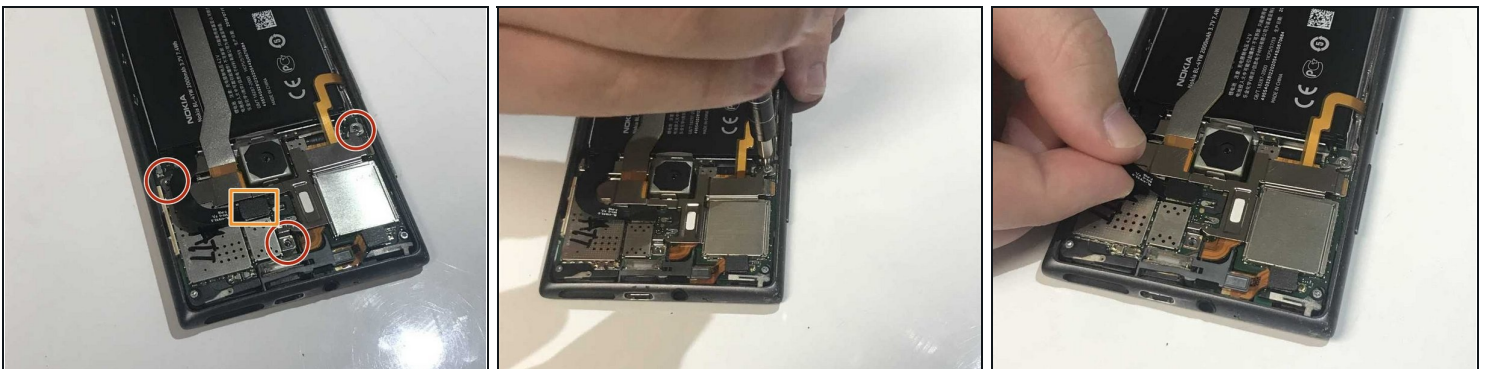
## Step 2



- Slide a plastic opening tool under the back cover.
- Slide the tool around the outsides of the cover to fully dislodge the pins holding the cover to the phone.

⚠ Some pins are facing the opposite way from the others.

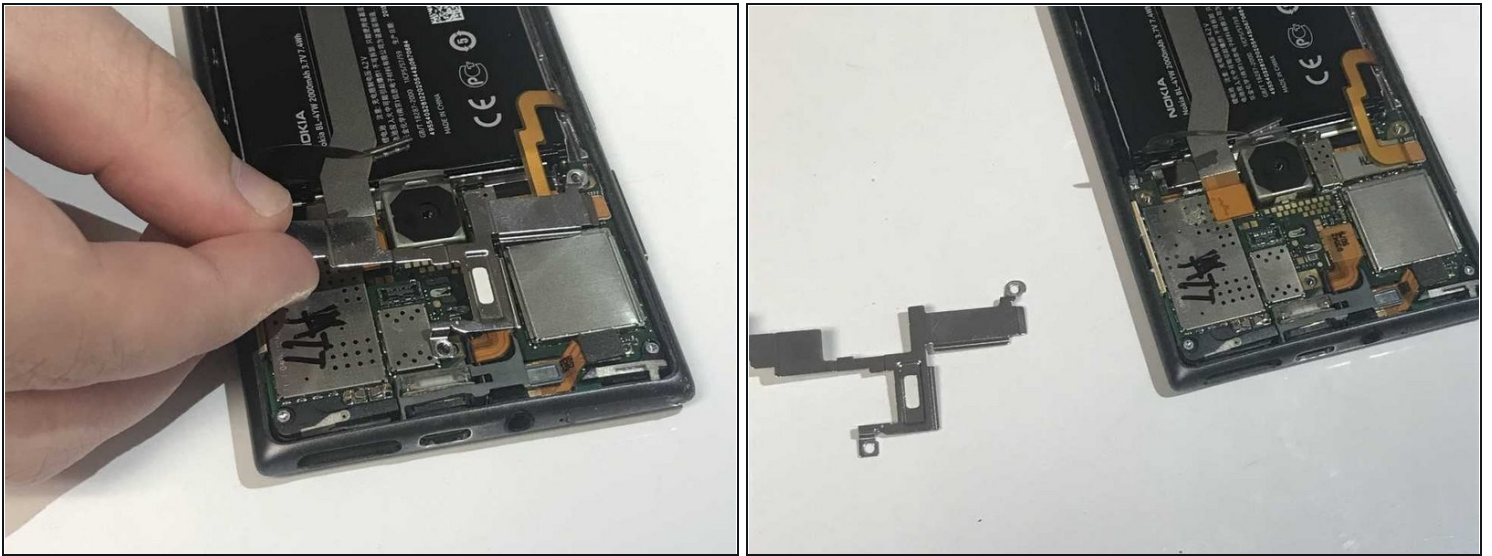
## Step 3



- Remove the 3 screws using the T7 Torx screwdriver.
- Unclip the black tab connector.



## Step 4



- Remove the silver metal cover.

⚠ Be careful of the tape under the right square side of the panel. Using a spudger helps.

## Step 5



- Unclip the two orange tabs.
- Remove the four silver screws using the T5 Torx screwdriver.

## Step 6



- Remove the motherboard by sliding tweezers between it and the back of the screen. Lift up.

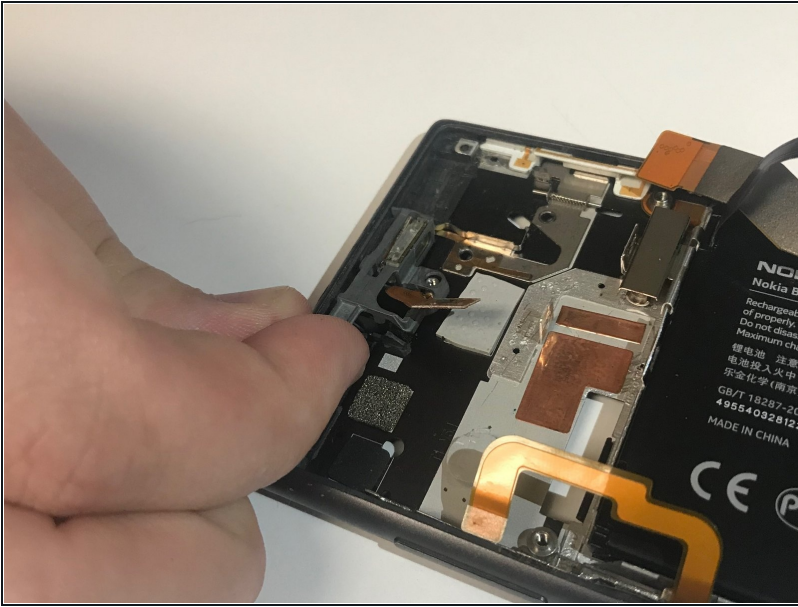
## Step 7 — Display



- Push the screen from the inside of the phone.
- Pull the screen off.
- ① Slide the electronic strip through the small opening.

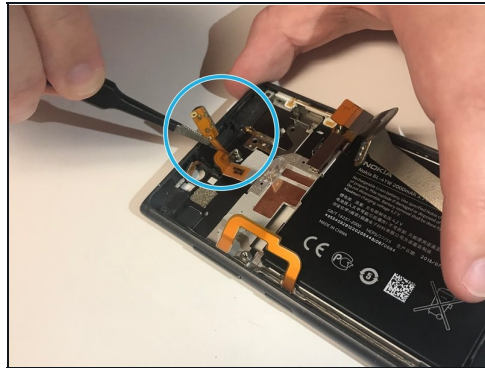
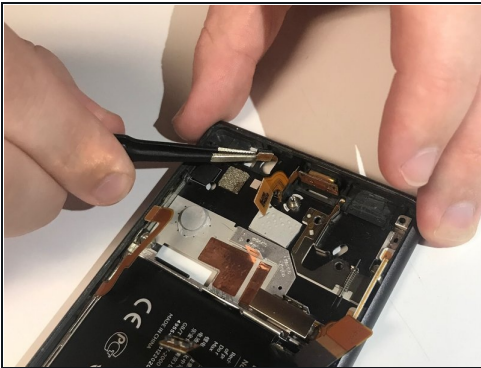


## Step 8 — Speaker



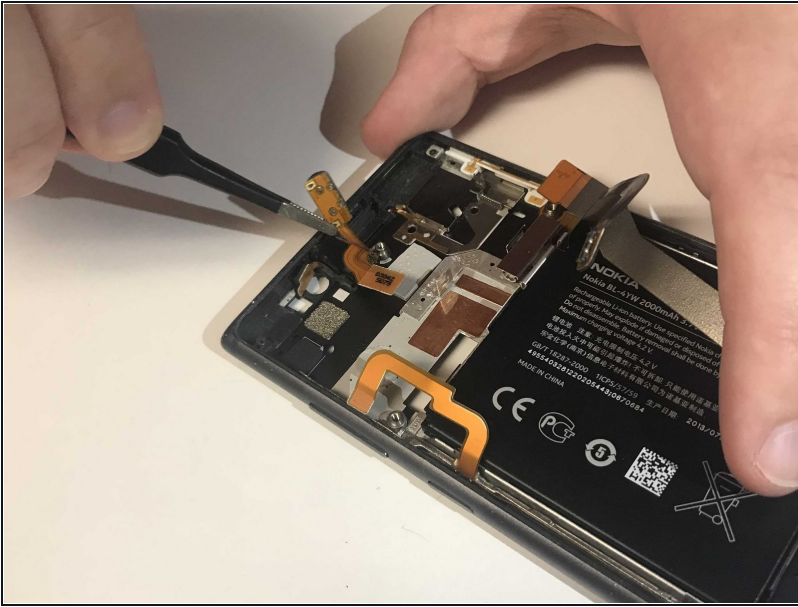
- Locate the grey speaker/camera cover.
- Carefully remove the cover with either a pair of [tweezers](#) or your fingers.

## Step 9



- With a pair of tweezers, gently remove the orange colored tab closest to the speaker.

## Step 10 — Front Camera



- Pull at the orange section until it becomes loose.
- ⓘ It is located in the upper leftmost section of the phone behind the front camera.

## Step 11



- Pull vertically on the same orange section until the front camera comes out.
- ⚠ The front camera as well as the speaker may come out after the last step so be careful.

To reassemble your device, follow these instructions in reverse order.