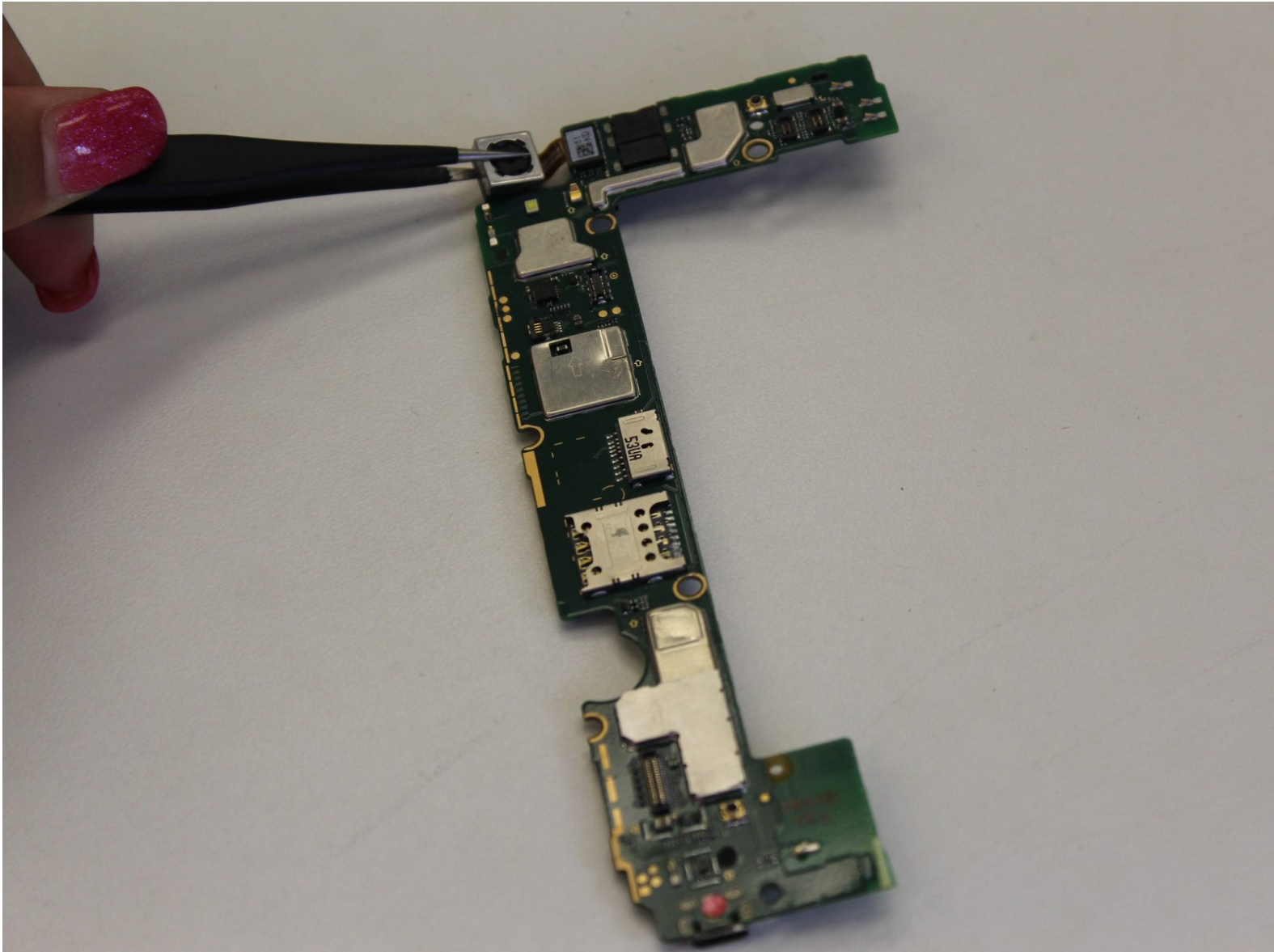




Huawei Pronto LTE Rear Camera Replacement

Use this guide to replace the rear view camera in your Huawei Pronto LTE phone.

Written By: Sonara



INTRODUCTION

This guide will clearly show you how to replace the rear camera in your Huawei Pronto LTE smartphone, without damaging other parts of the phone. Before you start please have the correct tools listed underneath as these tools will ensure a successful camera replacement.



TOOLS:

- [Spudger](#) (1)
 - [Tweezers](#) (1)
 - [Phillips #0 Screwdriver](#) (1)
 - [iFixit Opening Tools](#) (1)
-

Step 1 — Rear Camera



- Use an Opening Tool and begin to lever up the back cover of your Huawei Pronto LTE

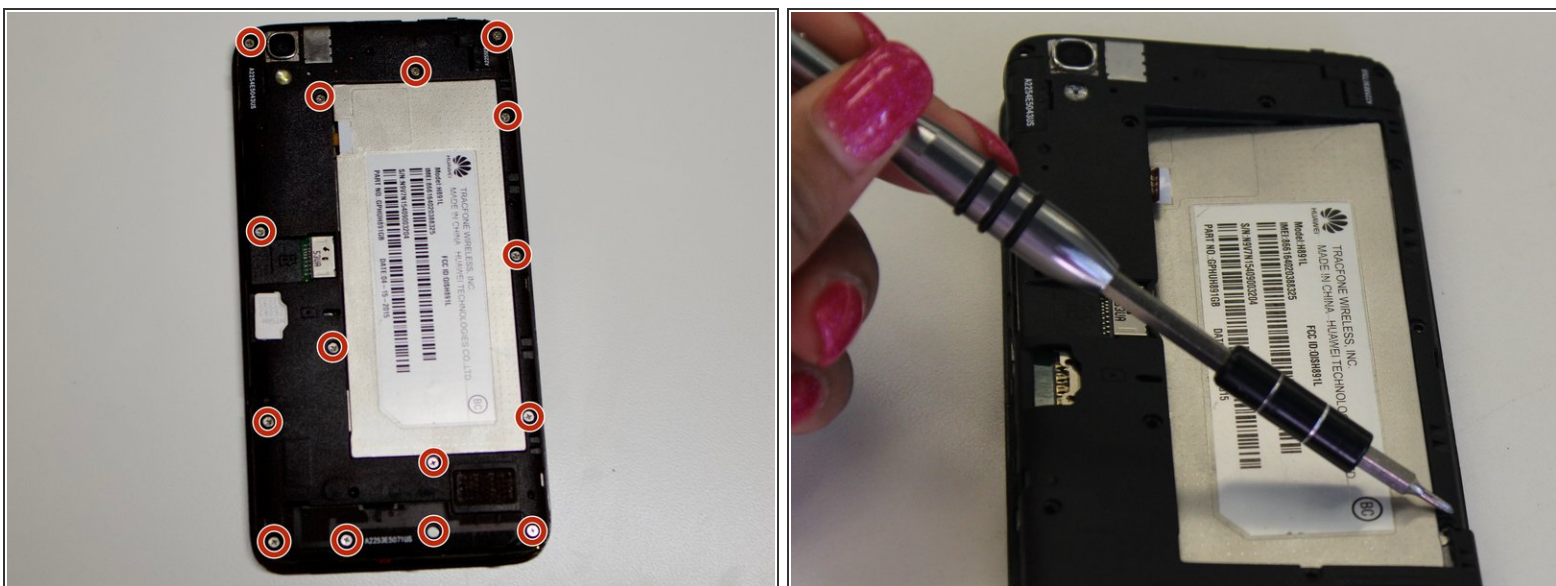
⚠ Make sure to do this all around the smartphone.

Step 2



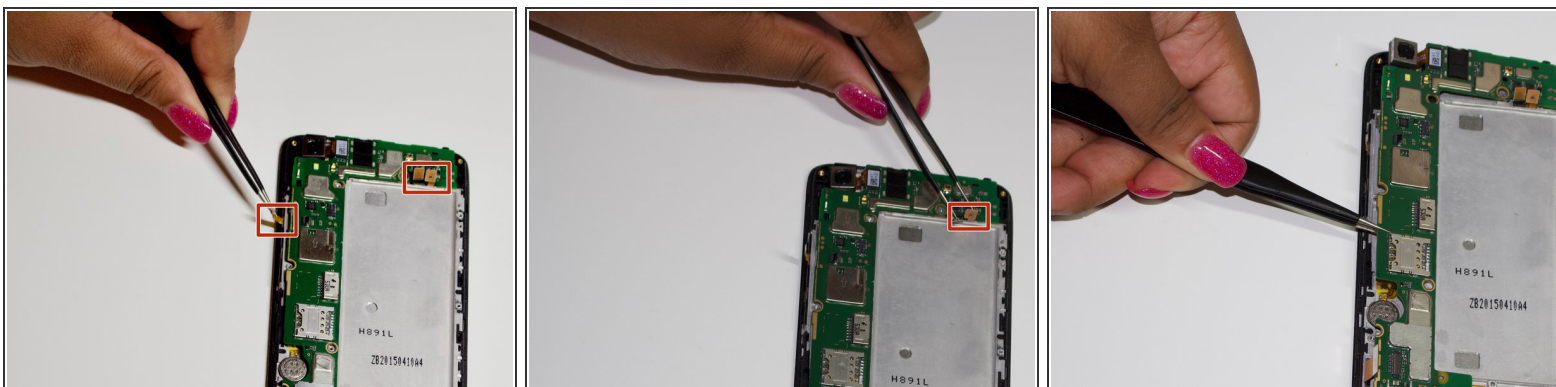
- Remove the back cover.
- ⓘ Please keep all the removed smartphone pieces in a safe place. These pieces will be needed later.

Step 3



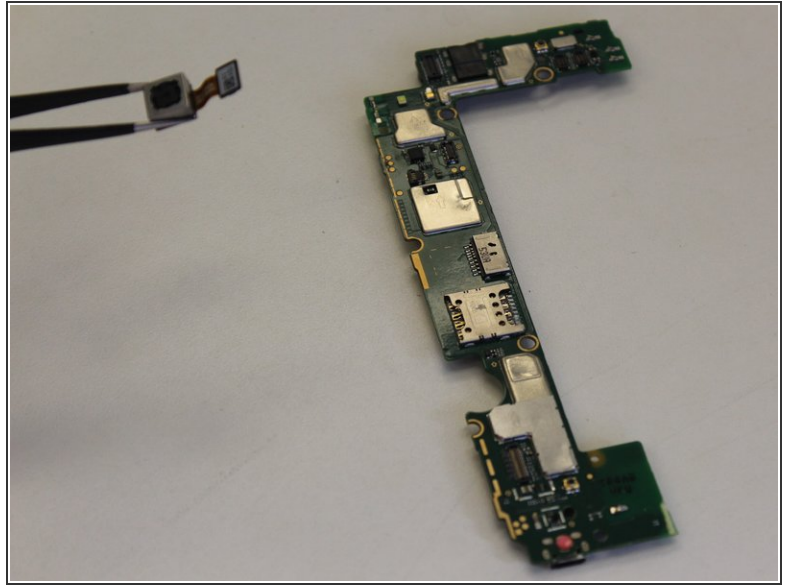
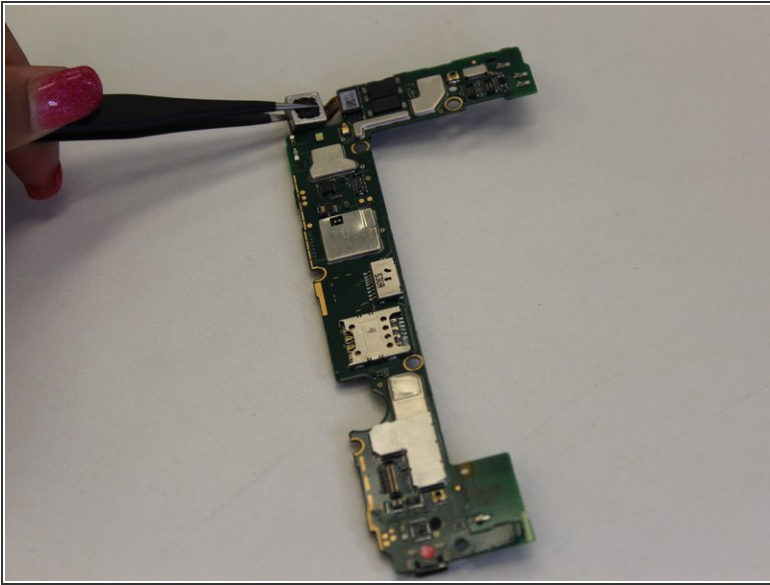
- Unscrew the fifteen 0.5mm screws with a Phillips #000 screwdriver.

Step 4




- Lift up the connectors with tweezers to disconnect them from the motherboard.
- Then use the tweezer again to take off the motherboard.

Step 5



- Release the connector.
- Loosen the camera from the motherboard and take it out with the tweezers.

 Do not touch the camera with your hands, only use tweezers.

To reassemble your device, follow these instructions in reverse order.