



# Keurig B70 Platinum Base Replacement

Replacing the base that is used to hold the cup on the Keurig B70 Platinum

Written By: Steven Tran



---

## INTRODUCTION

Cracked base? Or maybe you feel like taking it out for a thorough wash?

This guide will show you how to remove the plastic base surrounding the Keurig B70 Platinum device.

You will need a Phillips #2 screwdriver to complete this guide.



### TOOLS:

- [Phillips #2 Screwdriver](#) (1)

## Step 1 — Base





- Turn off and unplug the Keurig before starting.
- Turn the Keurig upside down so the metal base is exposed.
- Remove the five 12.0 mm screws.

## Step 2

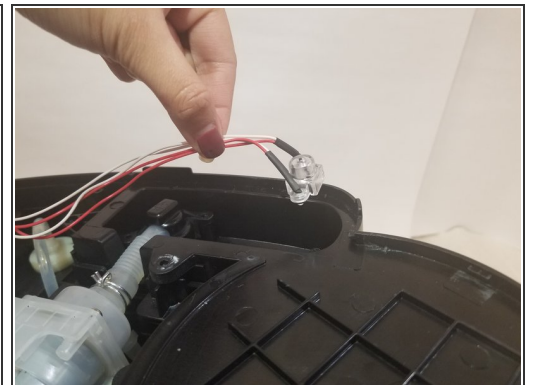
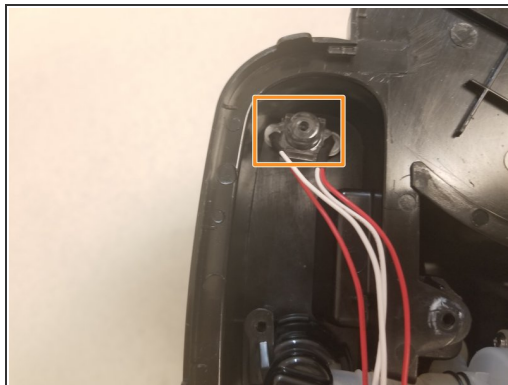
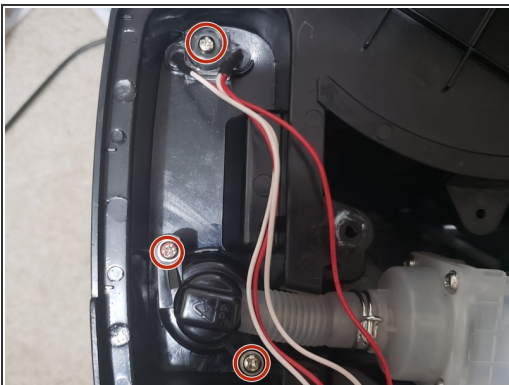


- Lift the metal plate off the Keurig and hang it over the side of the device.

 Be careful! The metal plate is sharp!

-  There are wires connected to the metal plate. Make sure the wires are not in the way of the internal components.

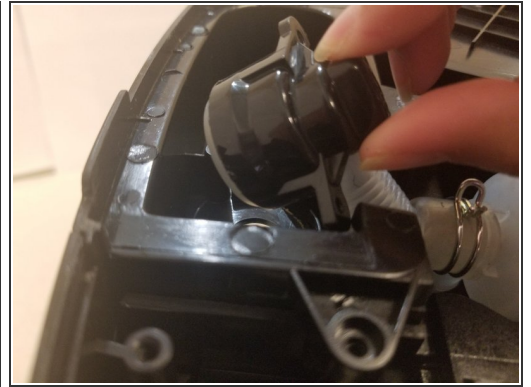
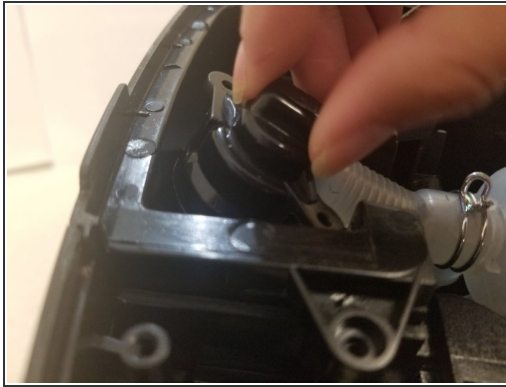
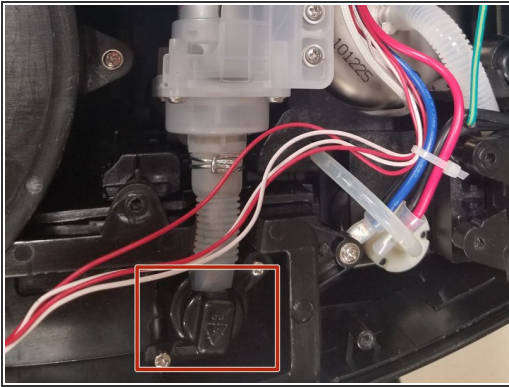
## Step 3



- Remove the three 11.0 mm screws located on the upper left side of the base from within the tub-looking area.
- Pull out the red and white wires and put it off to the side of the Keurig.

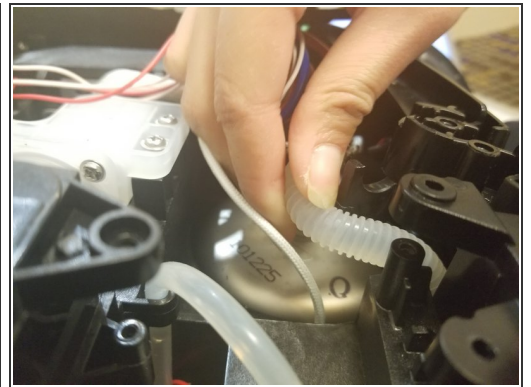
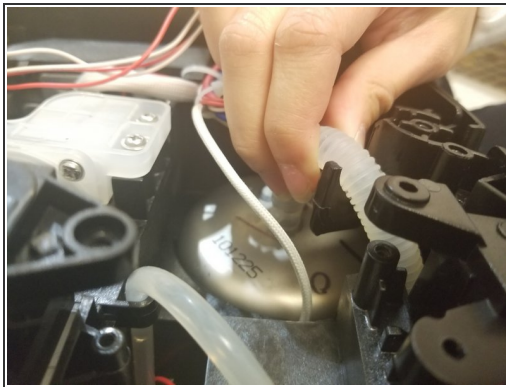
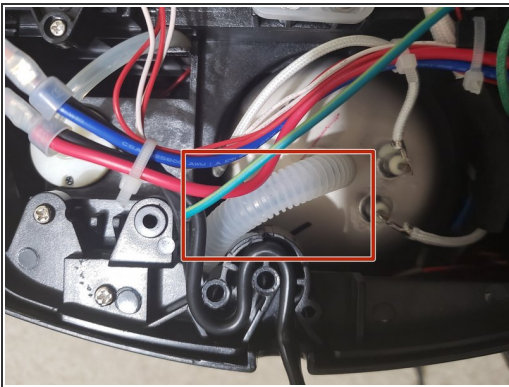


## Step 4



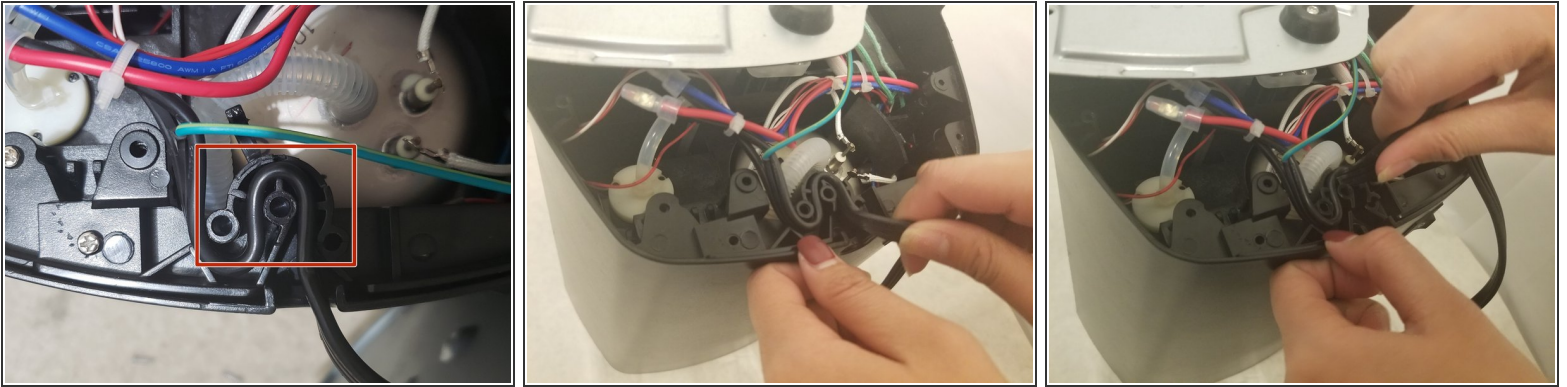
- Pull out the water collector by gripping it tightly and lifting upwards.

## Step 5




- Lift the tube, connected to the tank, off the black plastic hook and leave it off to the side of the hook.

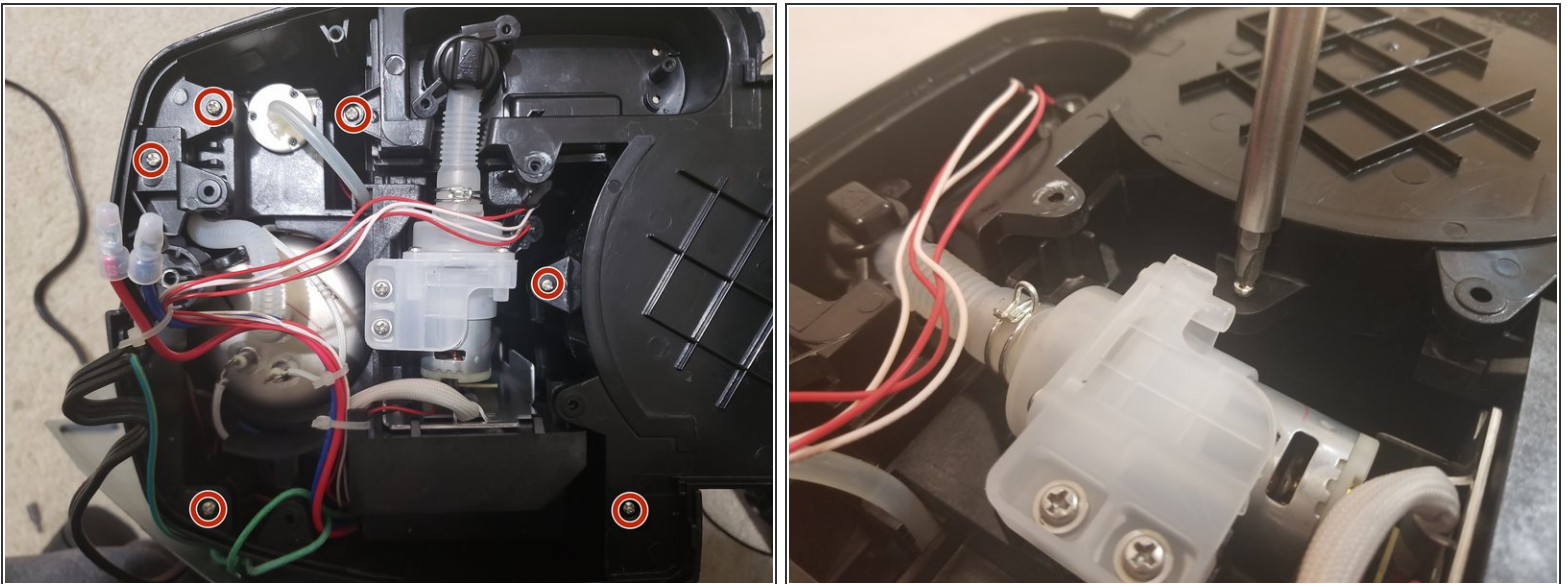
## Step 6



- Pull the power cord out from the plastic holder located near the water tank.

 This step requires a bit of force so don't be afraid to pull harder!

## Step 7



- Remove the six 13.0 mm screws.

## Step 8



- Lift the metal base and hover it over the opening of the black plastic base.
- Carefully raise the plastic base over the metal base until it is removed.
- ⓘ Make sure to pull the power cord through the base as well!

To reassemble your device, follow these instructions in reverse order.