



Keurig B70 Platinum Puncture Needle Replacement

Replace the puncture needle for the Keurig B70 Platinum so you can continue brewing your beverages.

Written By: Steven Tran



INTRODUCTION

If your puncture needle is damaged or dulled, follow this guide to safely remove and replace the puncture needle. The puncture needle is sharp so try to only touch the plastic holding the puncture needle. To complete the replacement, you will need a T15 Torx screwdriver, a Phillips #0 screwdriver, and a Phillips #2 screwdriver.

TOOLS:

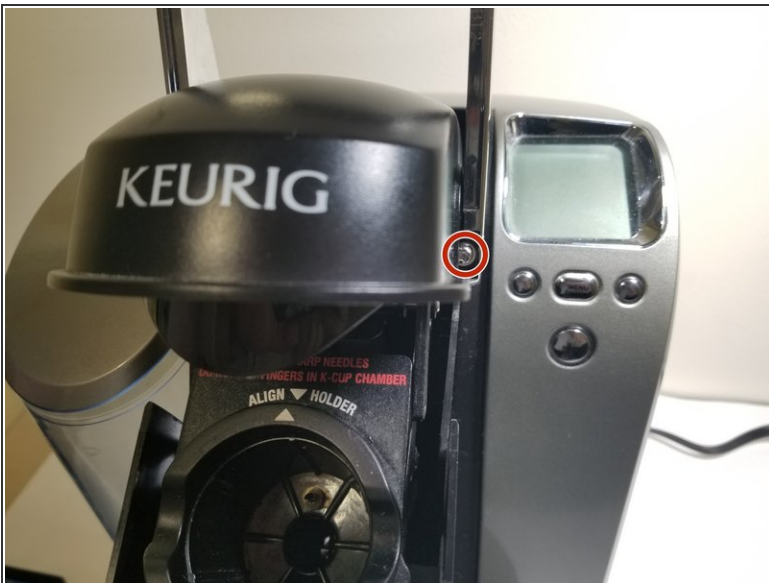
- [T15 Torx Screwdriver](#) (1)
 - [Phillips #2 Screwdriver](#) (1)
 - [Phillips #0 Screwdriver](#) (1)
-

Step 1 — Brewer Handle



- Turn off and unplug the Keurig before starting.
 - Lay the Keurig on its back and open the lid.
 - Using a Phillips #2 screwdriver, remove the two 21.0 mm screws.
- ⚠ Be careful when removing the screws. There is a sharp puncture needle!
- ℹ You may need to use tweezers to get the screws out.

Step 2



- Using a T15 Torx screwdriver, remove the two 29.0 mm screws on each ends of the handle.

Step 3



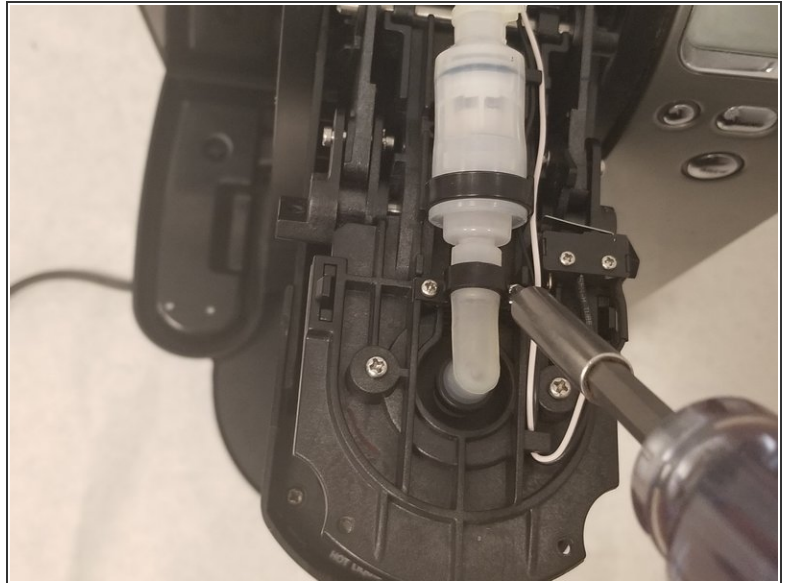
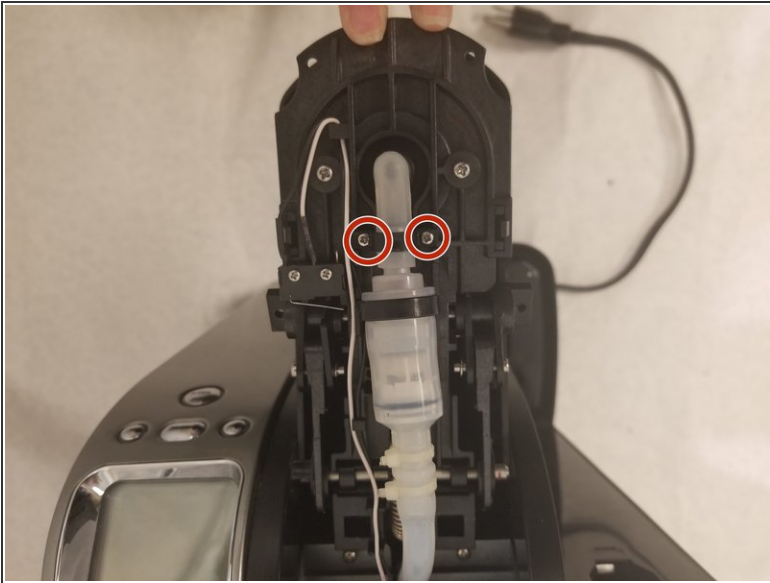
- Lift and pull the black plastic cover away from the Keurig.

Step 4



- Push the handle back and upward to detach it from the Keurig.

Step 5 — Puncture Needle



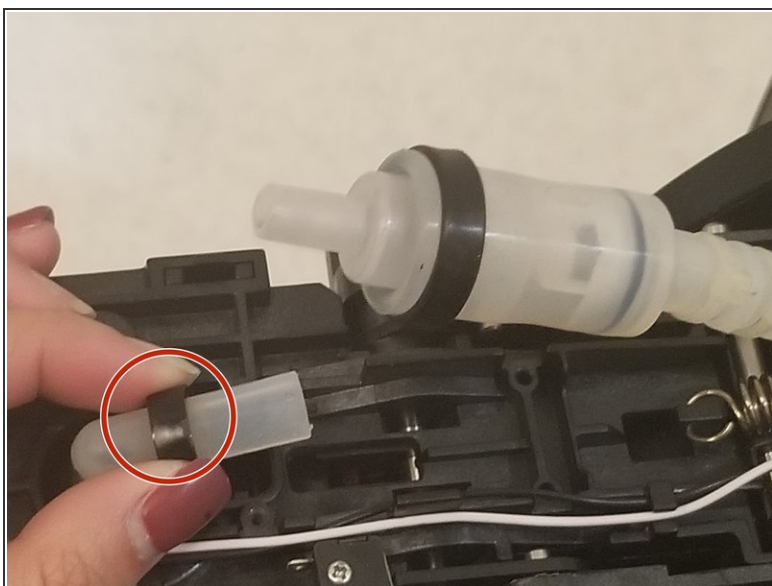
- Using a Phillips #0 screwdriver, remove the two 7.0 mm screws located on the sides of the tube near the puncture needle.

Step 6



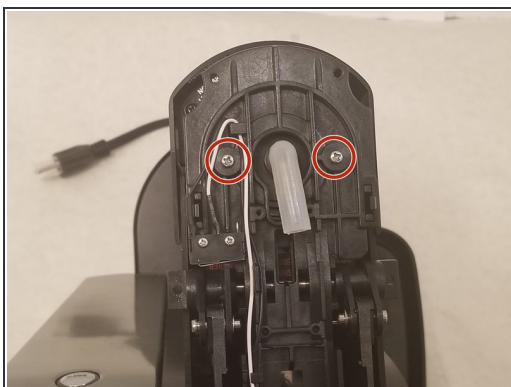
- Using both hands, pull the puncture needle tube and the Keurig tube apart to disconnect the tubes.
- **i** Don't be afraid to pull hard! The tubes are tightly connected.

Step 7



- Slide the black plastic ring, which holds the puncture needle tube down, off of the tube.

Step 8



- Using a Phillips #2 screwdriver, remove the two 9.0 mm screws next to the detached tube.
- ⓘ Hold on to the puncture needle when removing the screws to ensure that the puncture needle does not fall and cause injury.

Step 9



- Gently pull the puncture needle down and out from the Keurig.

To reassemble your device, follow these instructions in reverse order.