



Mac mini Late 2018 Antenna Plate Replacement

Remove or replace the large metal antenna plate at the bottom of the Mac mini.

Written By: Jeff Suovanen



INTRODUCTION

Use this guide to remove or replace the Mac mini's large circular antenna plate. This plate covers the bottom of the Mac mini and must be removed in order to service other internal components.



TOOLS:

- [iFixit Opening Tool](#) (1)
 - [TR6 Torx Security Screwdriver](#) (1)
 - [Spudger](#) (1)
 - [Tweezers](#) (1)
-

Step 1 — Bottom Cover



⚠ Power off and unplug your Mac mini before you begin.

- Use an opening tool to pry the bottom cover up off of the Mac mini.

Step 2



- Lift and remove the bottom cover.



To reinstall the cover:

- Align it carefully so that the words "Mac mini" can be read when the ports are facing you.
- Then, press down on the cover to snap its three hidden clips into place.

Step 3 — Antenna Plate



- Remove six TR6 Torx security screws securing the antenna plate, of the following lengths:

- Three 4.1 mm shoulder screws
- Three 1.8 mm screws

☑ Throughout this repair, [keep track of each screw](#) and make sure it goes back exactly where it came from to avoid damaging your Mac.

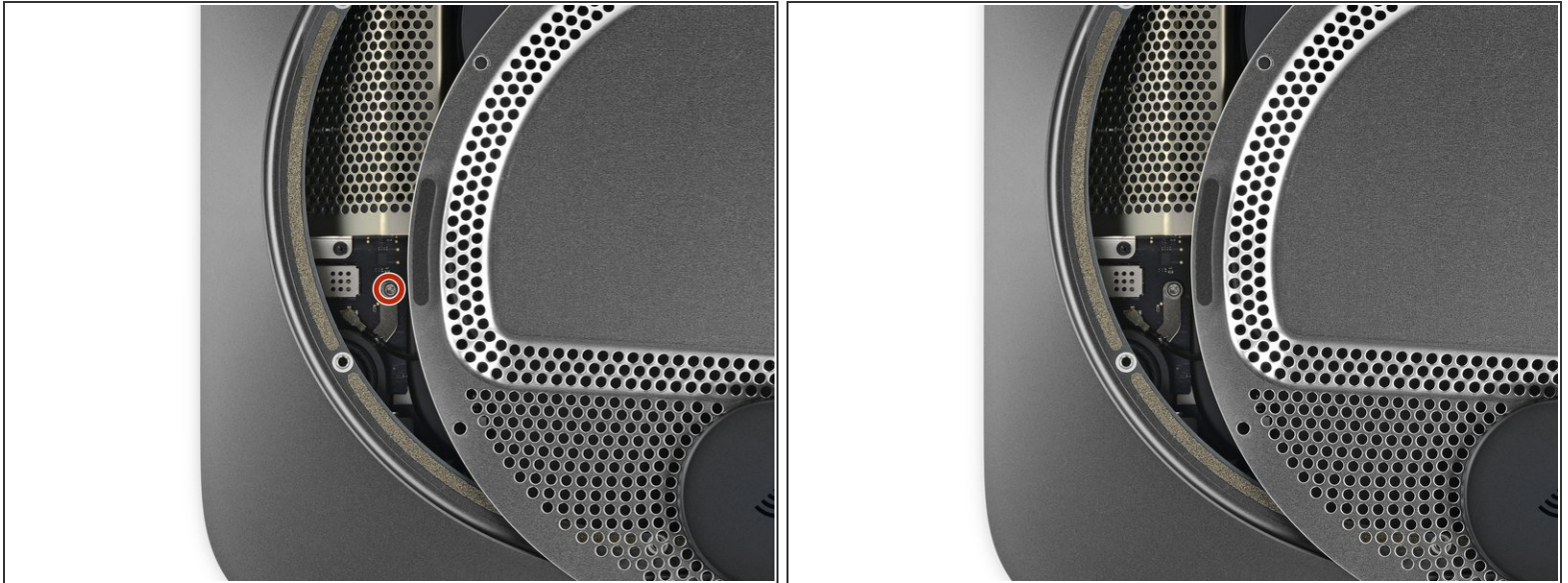
Step 4



⚠ Do not completely remove the antenna plate; it is still connected to the Mac mini by an antenna cable.

- With the Mac mini's ports facing you, carefully lift the antenna plate and slide it about an inch to the right.

Step 5





- Use a T6 Torx driver to remove the 2.8 mm screw securing the antenna cable to the Mac mini's logic board.

Step 6



 The antenna cable connector and socket are fragile.

- Use the point of a spudger or fine tweezers to gently pry the antenna cable connector straight up off its socket on the logic board.
-  To reconnect the cable, use tweezers to position it carefully over its socket on the logic board, and then press it straight down until it snaps into place.
-  If you need more slack in the cable, you can temporarily pry it from the clips securing it to the antenna plate.

Step 7



- Remove the antenna plate from the Mac mini.

Compare your new replacement part to the original part—you may need to transfer remaining components or remove adhesive backings from the new part before installing.

To reassemble your device, follow the above steps in reverse order.

Take your e-waste to an [R2 or e-Stewards certified recycler](#).

Repair didn't go as planned? Check out our [Answers community](#) for troubleshooting help.