



How to Fix a Broken Wig

Ever used a wig for your theater performances...

Written By: Reid Dounias



INTRODUCTION

Ever used a wig for your theater performances or Halloween costumes? Do you know someone who constantly need wigs because they have cancer or other medical conditions? This guide is for those who believe that wigs with fallen out pieces should be trashed. We want to show that fixing a wig is simple. With a rise in popularity of cosplay, anyone can fix their wigs with a needle and thread after lots of wear and tear. Our hope is that the guide will also help reduce waste and save money. This guide utilizes sewing needles and pins, so users need to be careful not to prick themselves.

TOOLS:

Sewing Needle (1)

Comb (1)

Safety Pin (1)

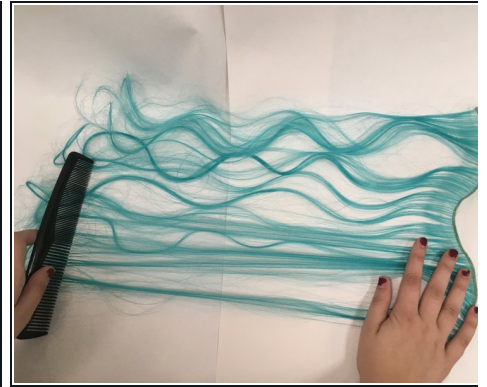
Step 1 — How to Fix a Broken Wig



- Brush out the wig with a comb. Use a brush if the wig is severely tangled.

 Do not brush aggressively as you may tear out more pieces of the wig.

Step 2



- Lay out the weft so it is not in a clump.
- Comb out the weft so it is not tangled.

Step 3



- Mount the wig on somewhere secure.
- Clip up the hair out of the way of the damaged spot with hair clips.

Step 4



- Line up wefts where you want to fill the damaged spot.

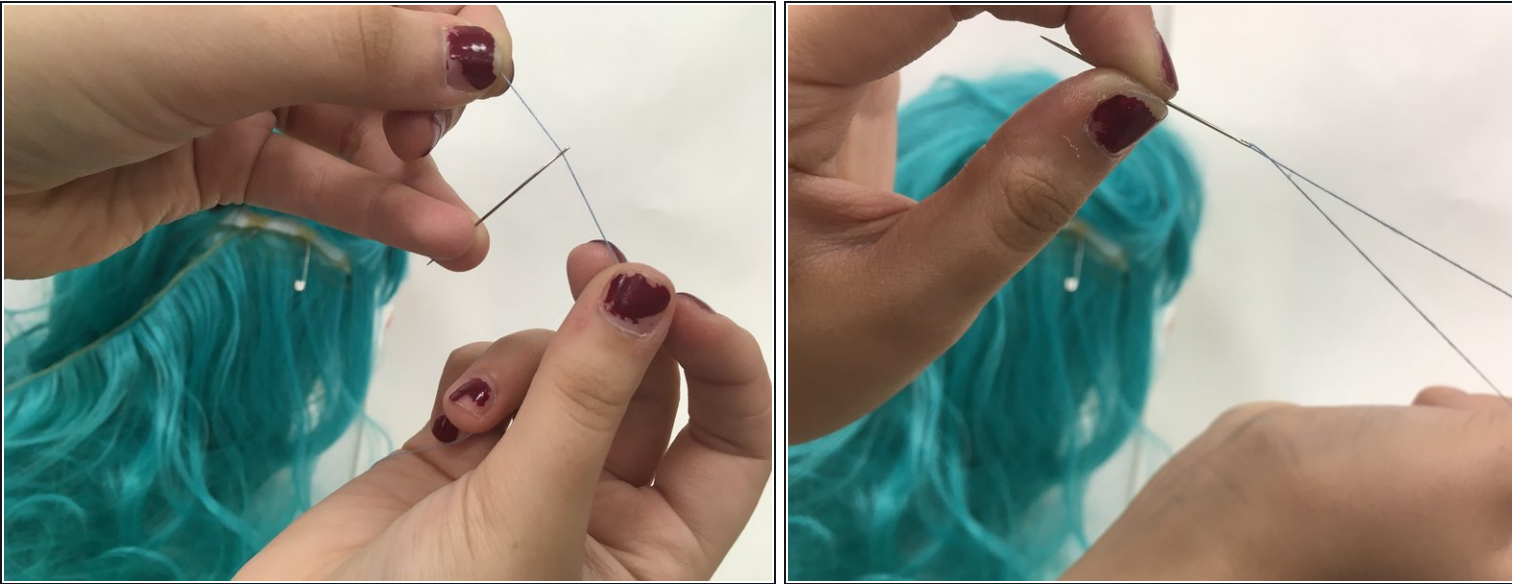
Step 5



- Pin the lined up wefts in place with the pins so they don't move around while working.

⚠ Use caution when working with pins and needles so you do not poke yourself.

Step 6



- Thread a needle with a long strand of thread.
- Double it over by pulling the needle to the middle of the thread, then bring both ends together to knot them.

Step 7



- Sew the weft in at each of the non-elastic bands of the wig in the damaged area.
- An overhand stitch (also called a whip stitch) is easy and works well for this fix.
- Be sure to tie off any loose ends after you are done stitching.

i If you need help with the stitch, here is a helpful [link with instructions](#).

Step 8



- Take out the pins and check to see if there is still damage and another weft is needed.
- If the damage is still noticeable, repeat steps 1-8 with another weft. If not, you are ready to use your wig again!

Step 9



- With a completed wig, you are ready to shine your best out to the world.

To reassemble your device, follow these instructions in reverse order.