



Hover-1 Matrix Pad Replacement

The pads on Hover-1 Matrix are weight...

Written By: Jici Zhuang



INTRODUCTION

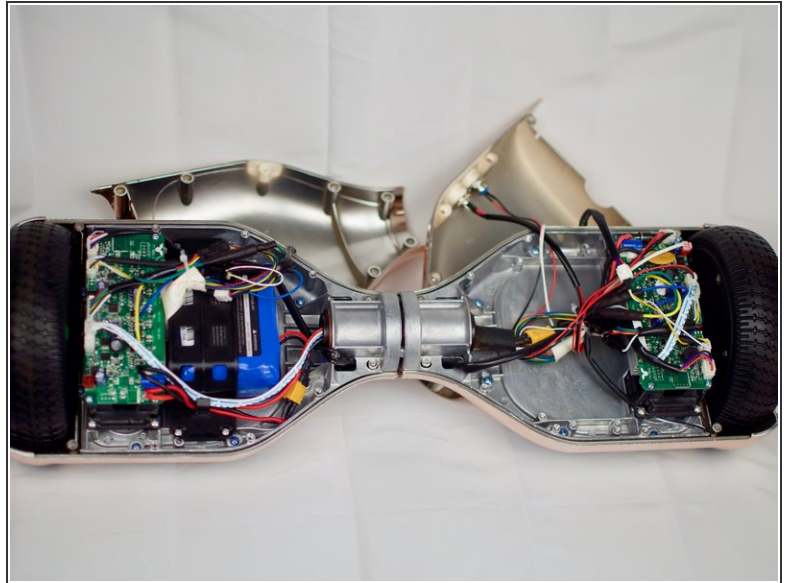
The pads on Hover-1 Matrix are weight sensitive, so when they sense weight, the hover board starts to move automatically. Overused pads must be replaced for the Hover-1 Matrix to move when there is a rider.



TOOLS:

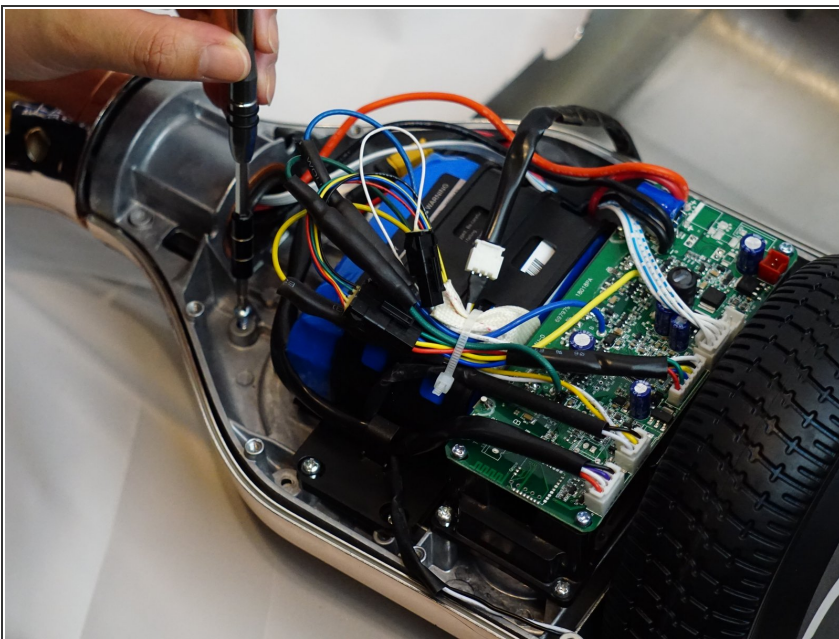
- [Phillips #1 Screwdriver](#) (1)
-

Step 1 — Pad



- Remove the screws on the back of the hoverboard using a Phillips #1 screwdriver.
- Remove the back shell from the hoverboard.

Step 2



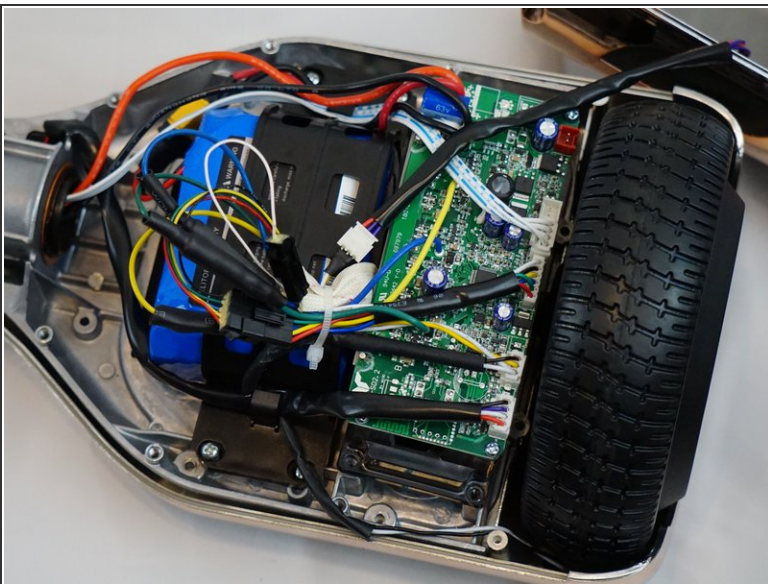
- Remove the screws from the metal layer inside the hoverboard using a Phillips #1 screwdriver.

Step 3



- Separate the upper shell of the hoverboard and the metal layer inside.

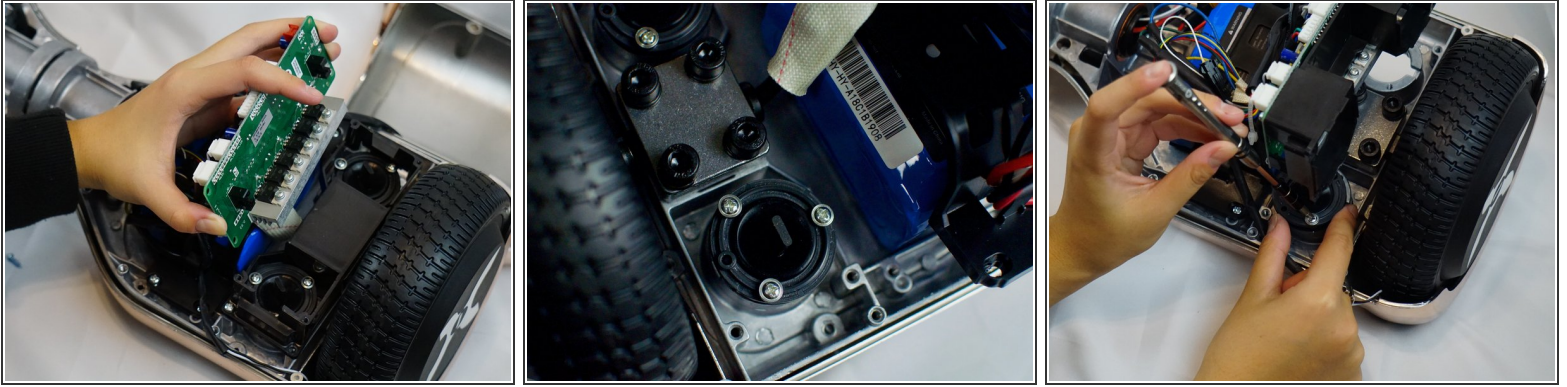
Step 4



- Start by identifying the motherboard, which is the green pad shown in the picture.
- Remove the screws on the corners of the motherboard with the Phillips #1 screwdriver and take it off.
- There are cables attached to the motherboard so go ahead and unattach them.

This document was generated on 2022-12-29 09:26:22 PM (MST).

Step 5



- Use picture 1 as a guide and move the motherboard to the other side.
- Identify the two black rubber buttons that are shown in the second picture.
- Remove the two rubber buttons using the Phillips #1 screwdriver.

Step 6



- Removing the rubber buttons in the previous step allows you to take the pad off.
- Finally, take off the old pad and put on a new pad.

To reassemble your device, follow these instructions starting with step number 6 and finishing with step number 1.