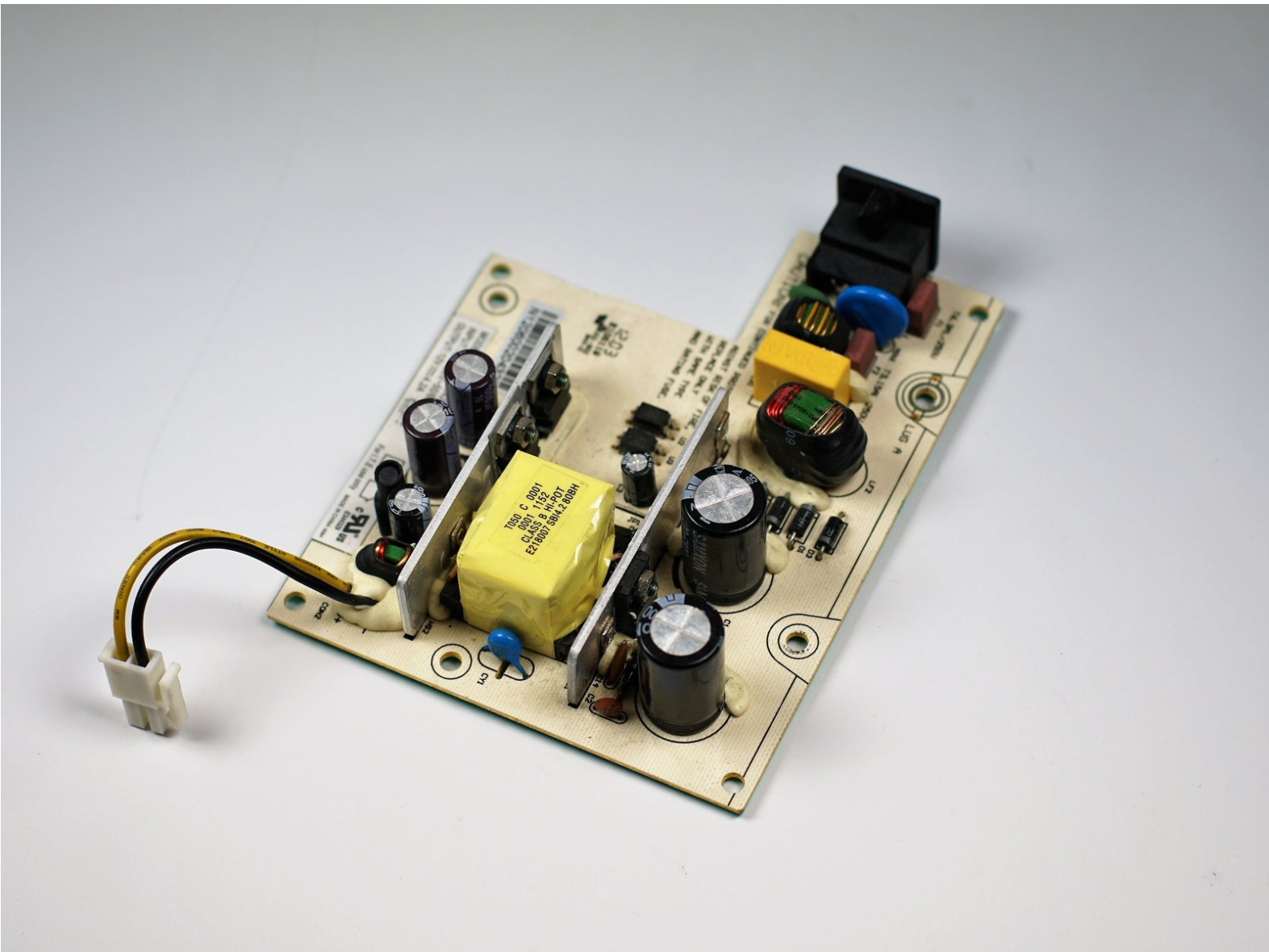




# TiVo Premiere XL4 Power Supply Replacement

How to replace the TiVo Premiere XL4 power supply.

Written By: Frances Prewitt



---

## INTRODUCTION

The power supply keeps the TiVo fully functioning with power. if some component is bent or needs replacement then the supply may need to be fixed; here is how to replace the power supply.

---



### TOOLS:

- [T8 Torx Screwdriver](#) (1)
  - [T10 Torx Screwdriver](#) (1)
-

## Step 1 — Case



- Power down the TiVo Premiere XL4 by detaching the power cable from the unit and power source.

⚠ Allow the box to cool for at least 5 minutes before proceeding to the next step.

## Step 2



- Remove the four 80 mm T10 screws from the back of the TiVo box using the Torx screwdriver.

### Step 3



- Take the outer casing by sliding the top of the box off of the component carefully, making sure not to damage the surrounding components inside.

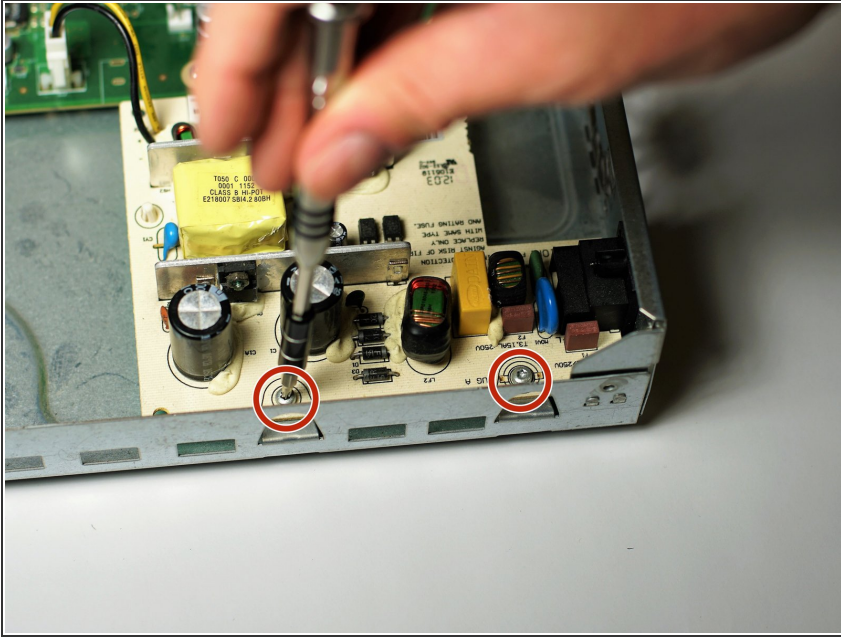
### Step 4 — Power Supply



- Remove the 140 mm T8 screw from the back of the TiVo premiere XL4 box holding the power supply in place using a Torx screwdriver.

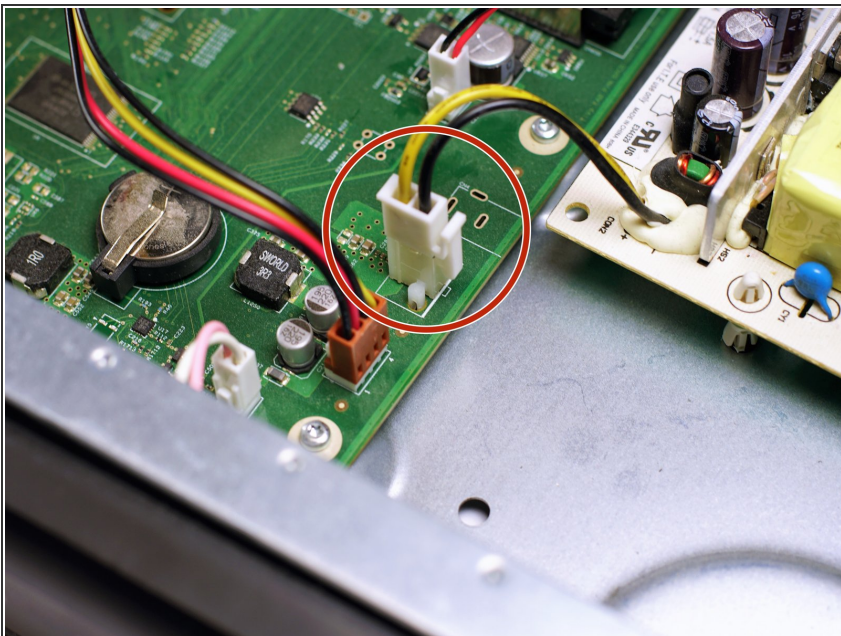


## Step 5



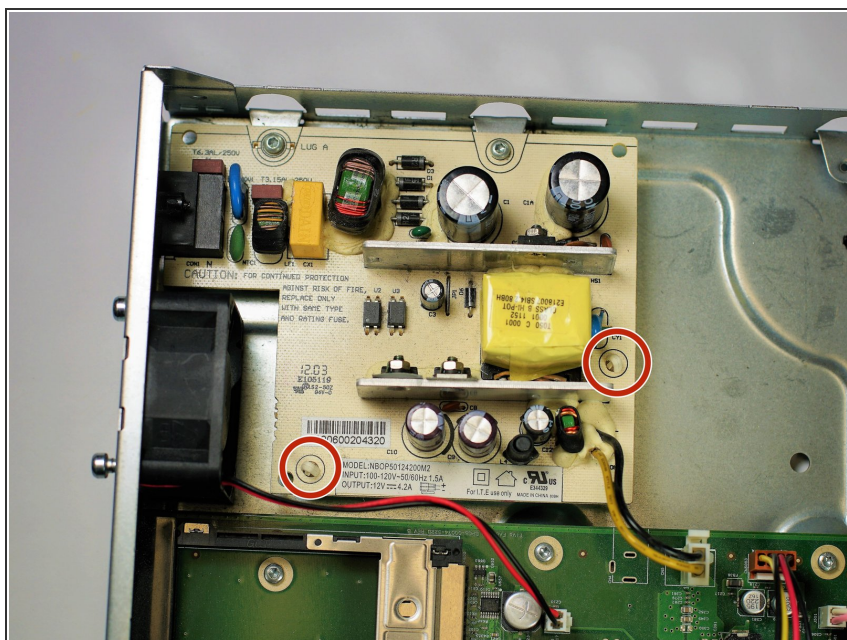
- Remove the two 80 mm T10 screws from the power supply using a Torx screwdriver.

## Step 6



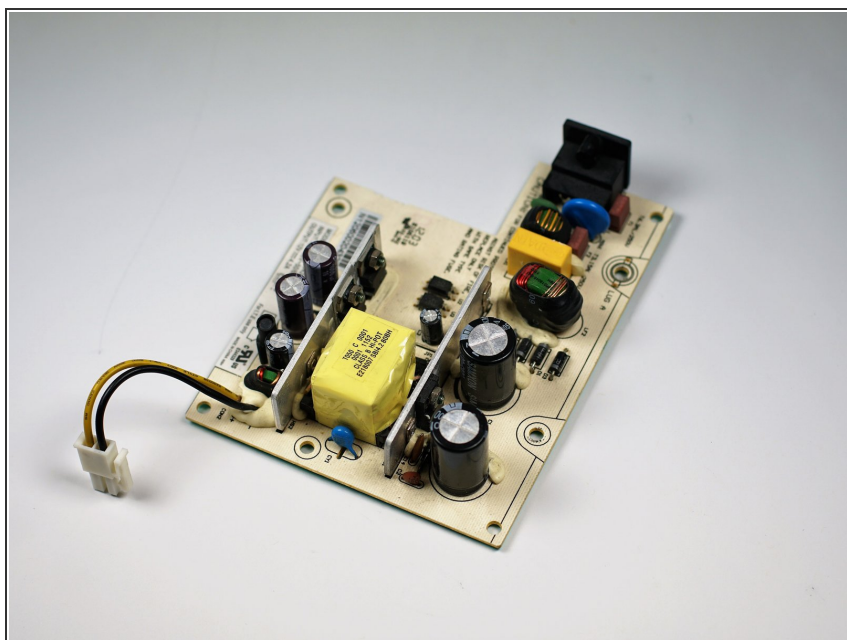
- Remove the power cable from the motherboard by gently pinching the connector.

## Step 7



- Pinch the two plastic plugs and lift the power supply to detach the plugs from the board.

## Step 8



- Take out the power supply unit.

To reassemble your device, follow these instructions in reverse order.