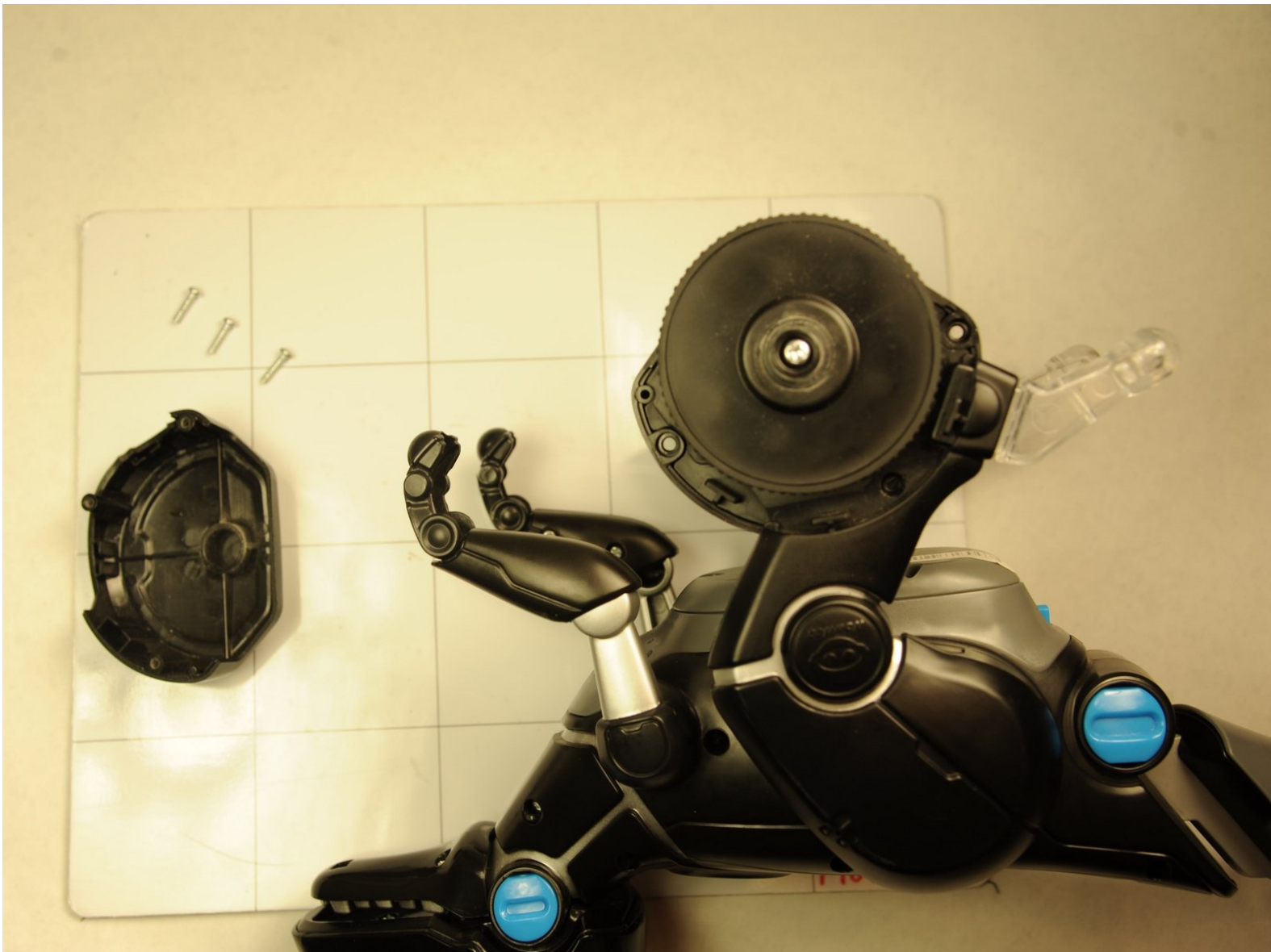




# WowWee Miposaur Wheel Replacement

This guide will show you how to remove and replace the wheels in the WowWee Miposaur.

Written By: Samir Himes



---

## INTRODUCTION

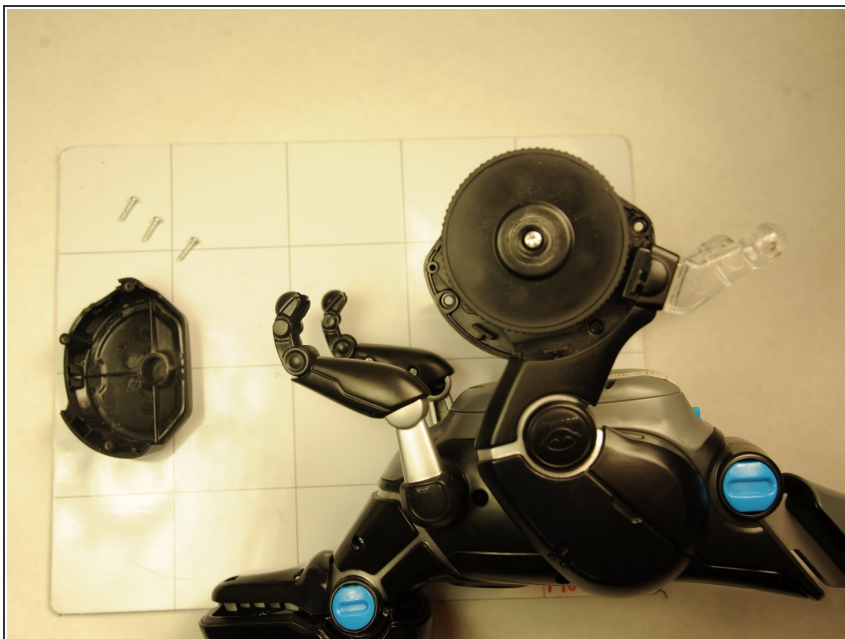
This guide shows you which screws and which pieces to remove in order to access the wheel housing.



### TOOLS:

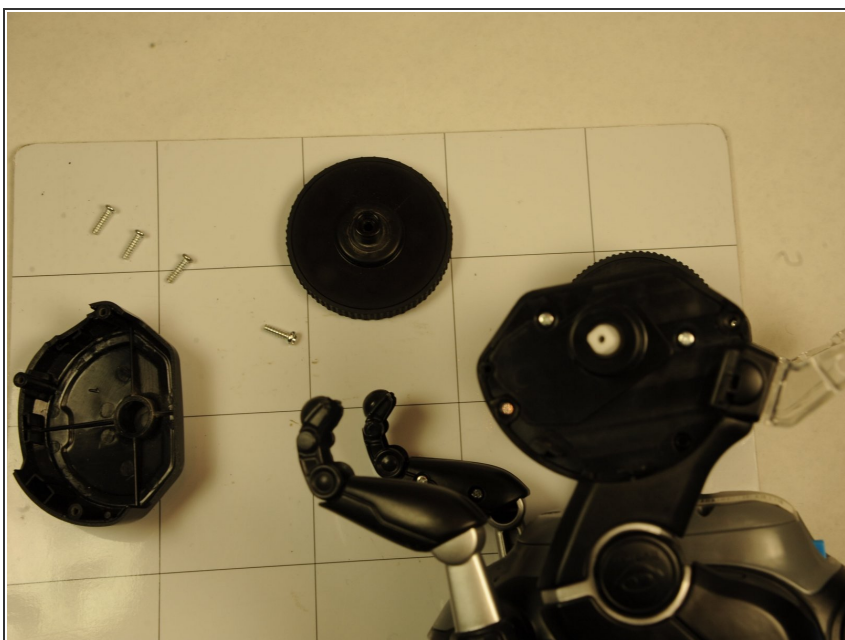
- [Phillips #1 Screwdriver](#) (1)
-

## Step 1 — Wheel



- Remove the 1.2 mm Phillips screws surrounding the wheel and take off the wheel cover.

## Step 2



- Remove 1.2 mm Phillips screw from the white plastic piece in the center of the wheel and then remove the wheel entirely.

To reassemble your device, follow these instructions in reverse order.