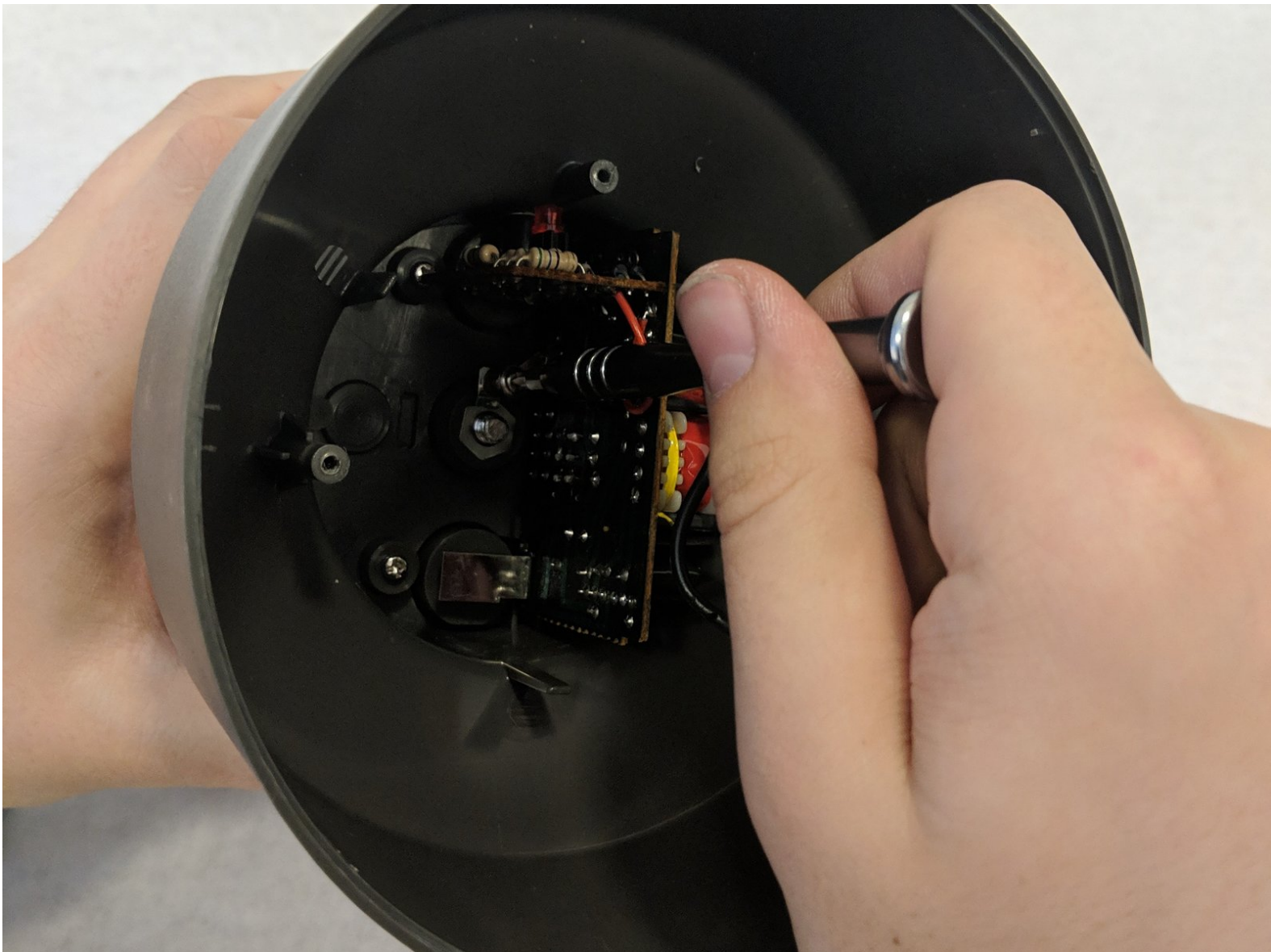




Coleman Rechargeable Fluorescent Twin Tube Main Power Board Replacement

How to replace the main power board for the Coleman Rechargeable Fluorescent Twin Tube Lantern.

Written By: Mathew Merrick



INTRODUCTION

Have you troubleshooted everything else and nothing is working to fix the device? Replacing the main power board might be your last resort.



TOOLS:

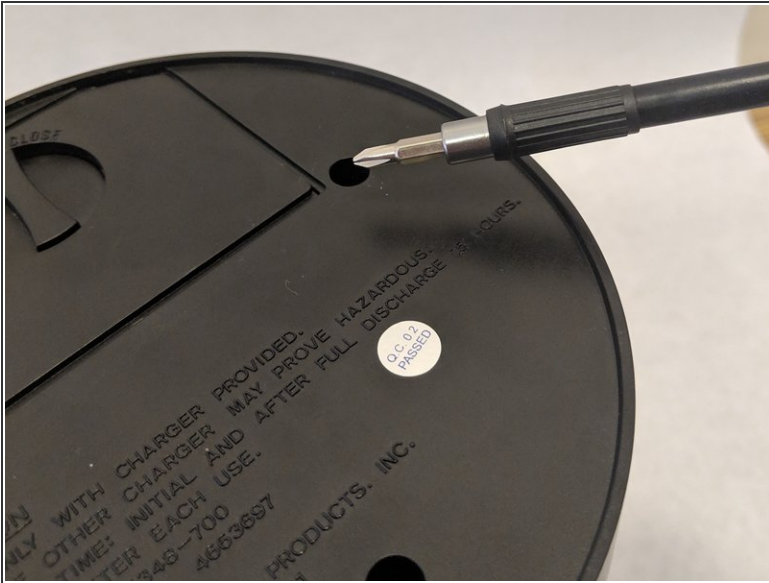
- [Phillips #0 Screwdriver](#) (1)
- [Phillips #1 Screwdriver](#) (1)



PARTS:

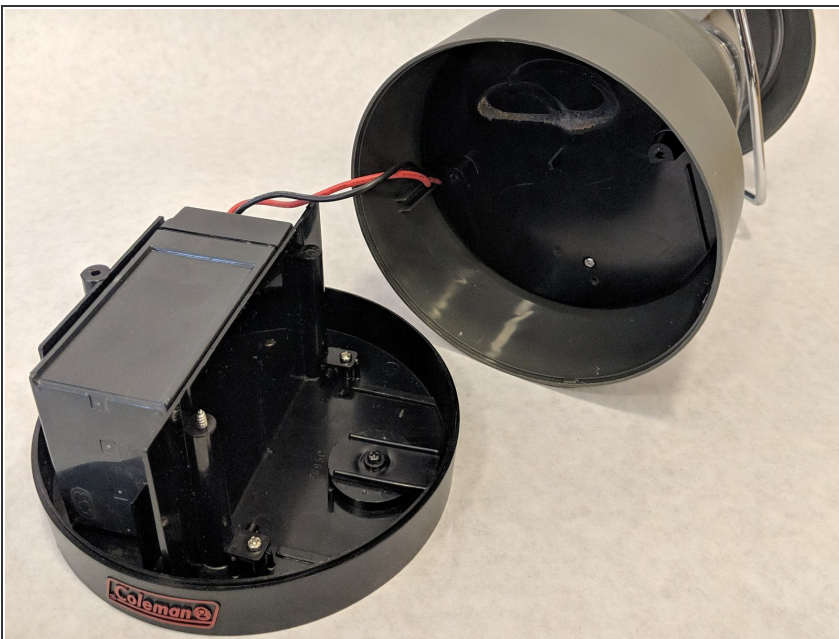
- [Battery 5342-1001](#) (1)

Step 1 — Battery



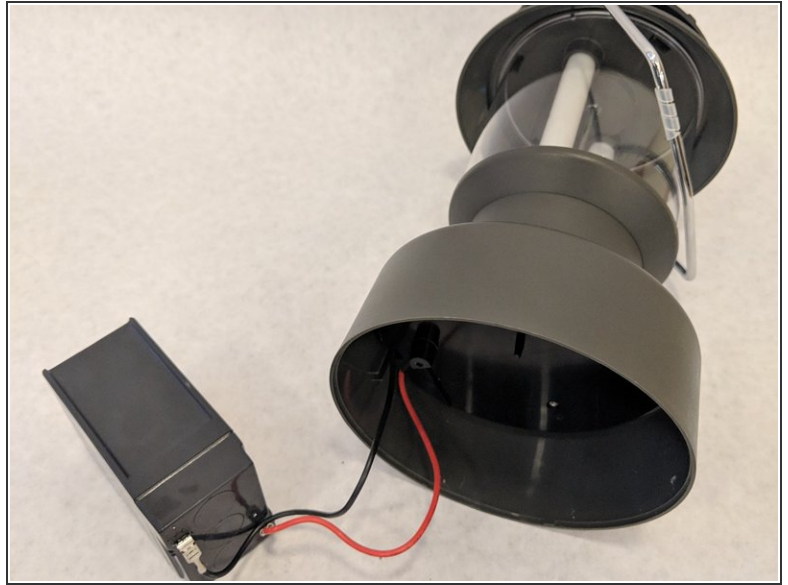
- Carefully turn the lantern upside down.
- Remove the three 1.2 mm Phillips #0 screws from the base of the lantern.

Step 2



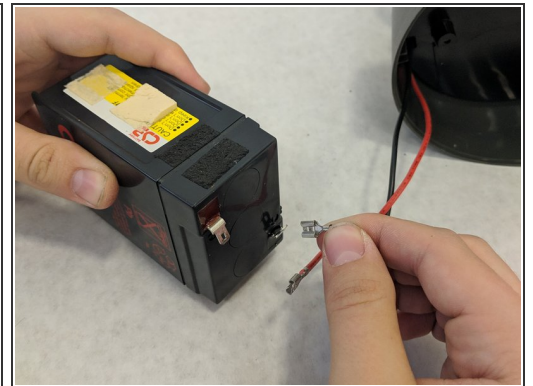
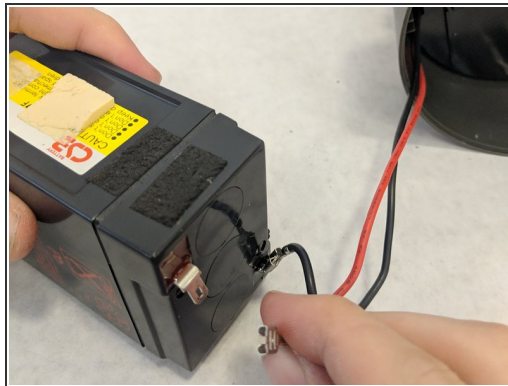
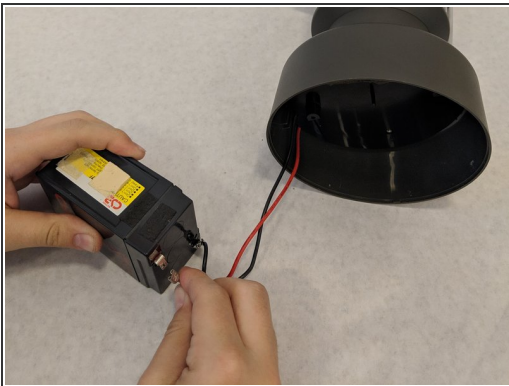
- Carefully pull the bottom of the lantern to remove the base from the device.

Step 3



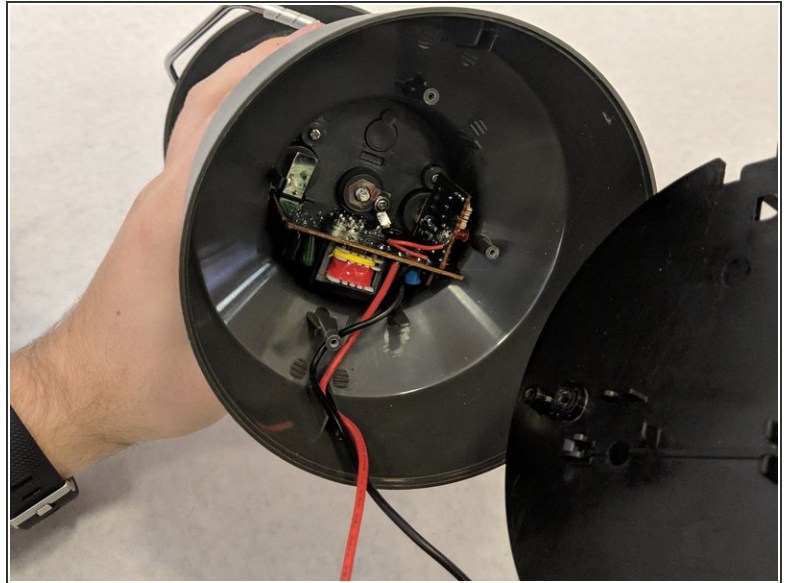
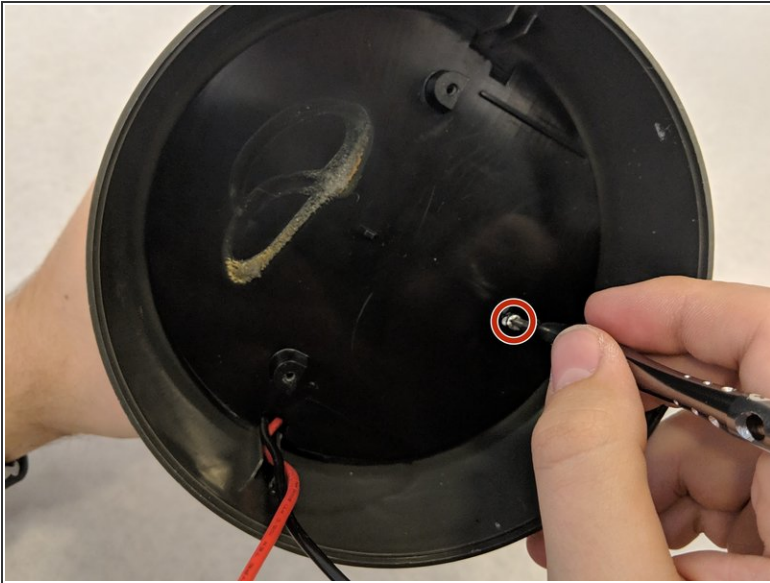
- Gently pull the battery out of the slot and away from the base.
- ⓘ The battery may be held into place by adhesive strips.

Step 4



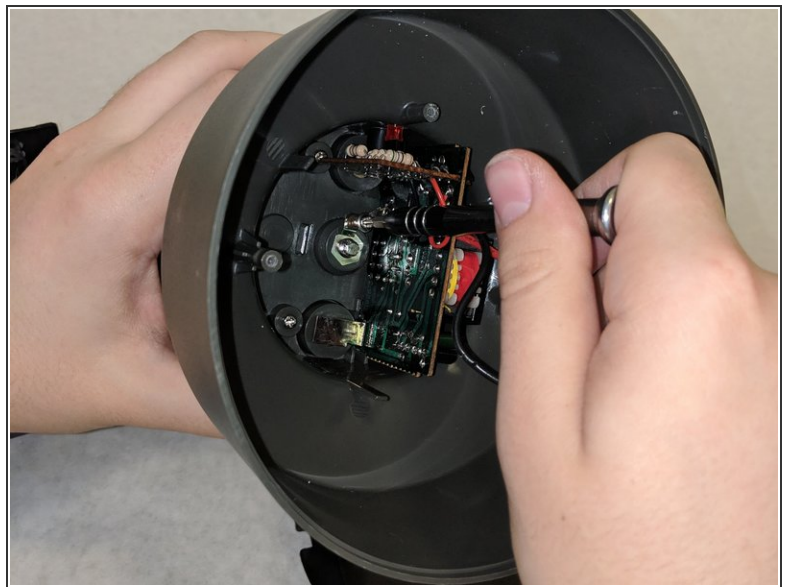
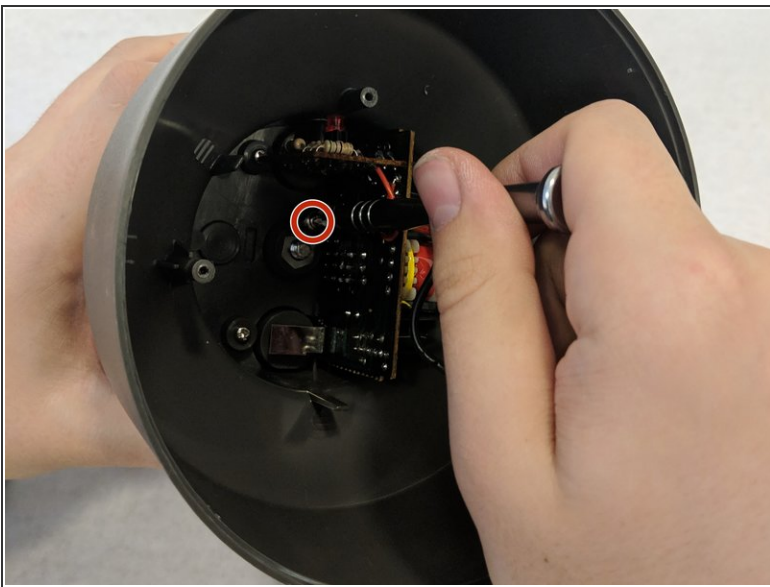
- Carefully detach the negative wire from the battery terminal first.
- Next, detach the positive wire from the battery terminal.

Step 5 — Main Power Board



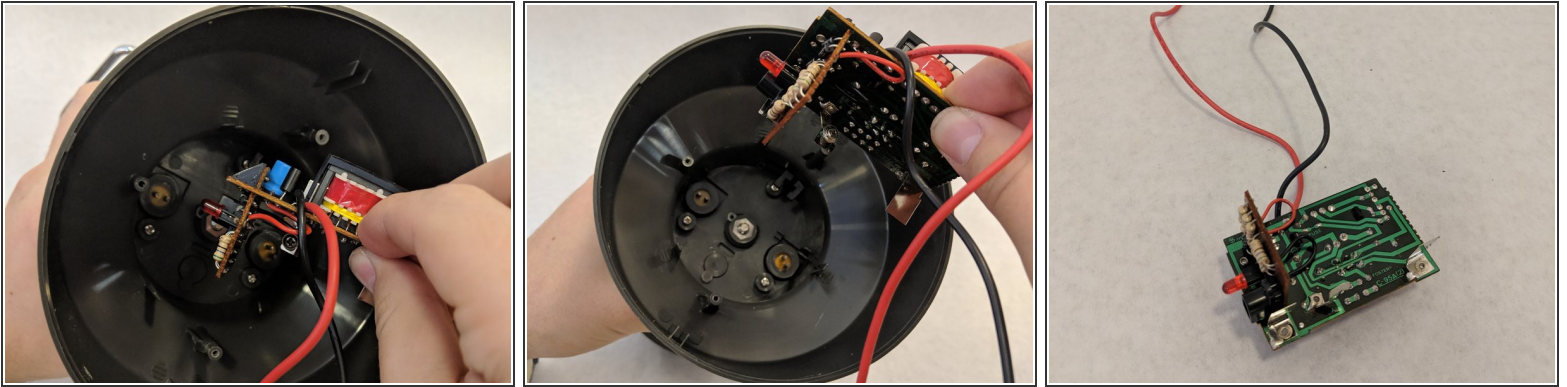
- Remove the single 1.2 mm Phillips #1 screw on the bottom of the lantern.
- Remove the plastic barrier.

Step 6



- Unscrew the single 1.2 mm Phillips #1 screw holding the motherboard to the plastic lantern housing.

Step 7



- Gently grab the main board by the exposed PCB.
- Pull the main board straight out of the housing.

To reassemble your device, follow these instructions in reverse order.