



ASUS ROG G46VW Indicator Lights Replacement

This guide will show you how to replace the Indicator Lights for your ASUS ROG G46VW

Written By: Nicolas Catano

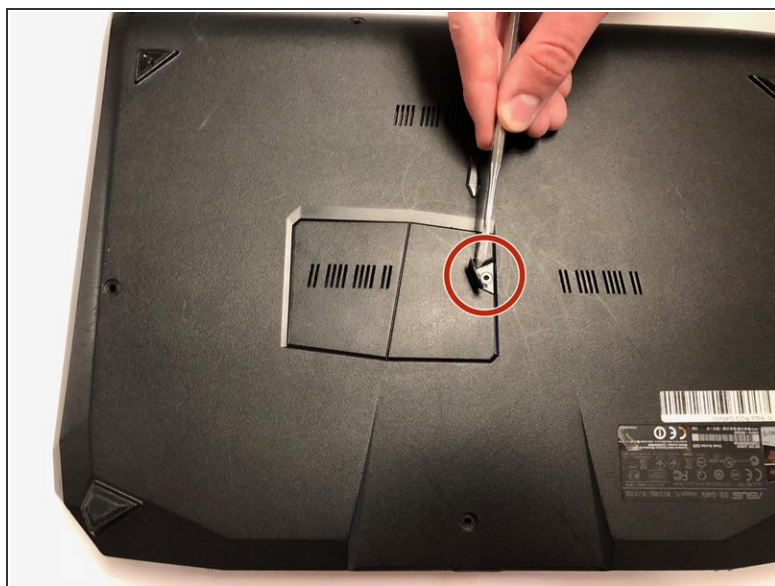




TOOLS:

- [T9 Torx Screwdriver](#) (1)
- [iFixit Opening Tools](#) (1)
- [Phillips #0 Screwdriver](#) (1)
- [Spudger](#) (1)

Step 1 — RAM



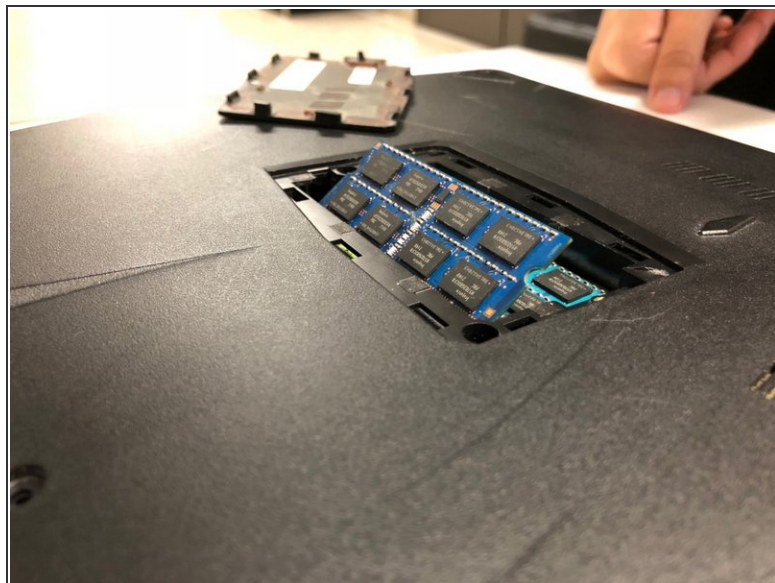
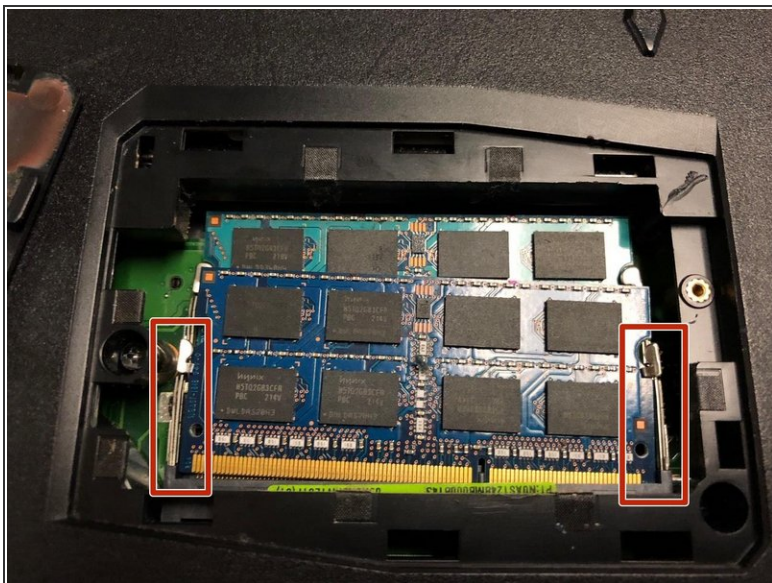
- Lift the screw cover and remove the screw using a Phillips #0 screwdriver.

Step 2



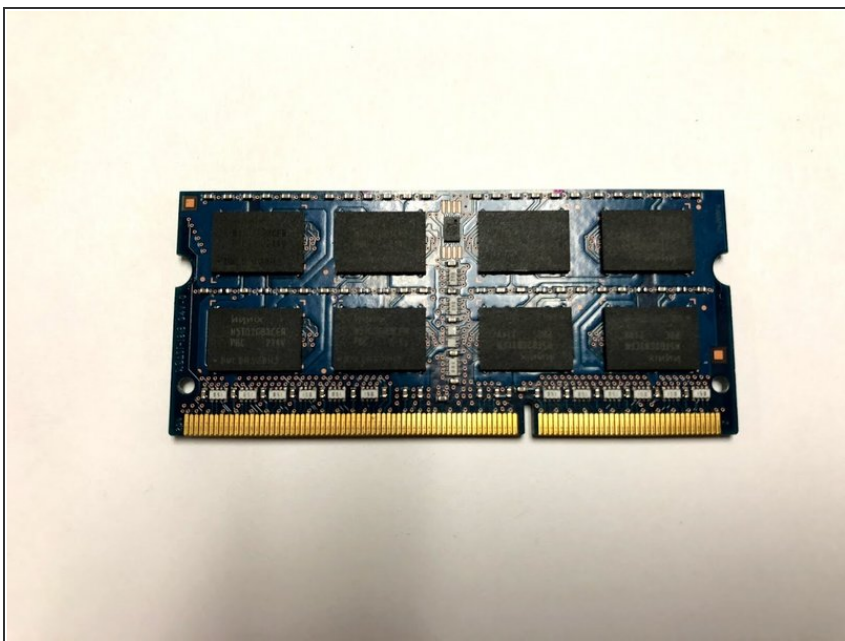
- Remove the RAM cover by lifting the screw cover and pulling away firmly.

Step 3



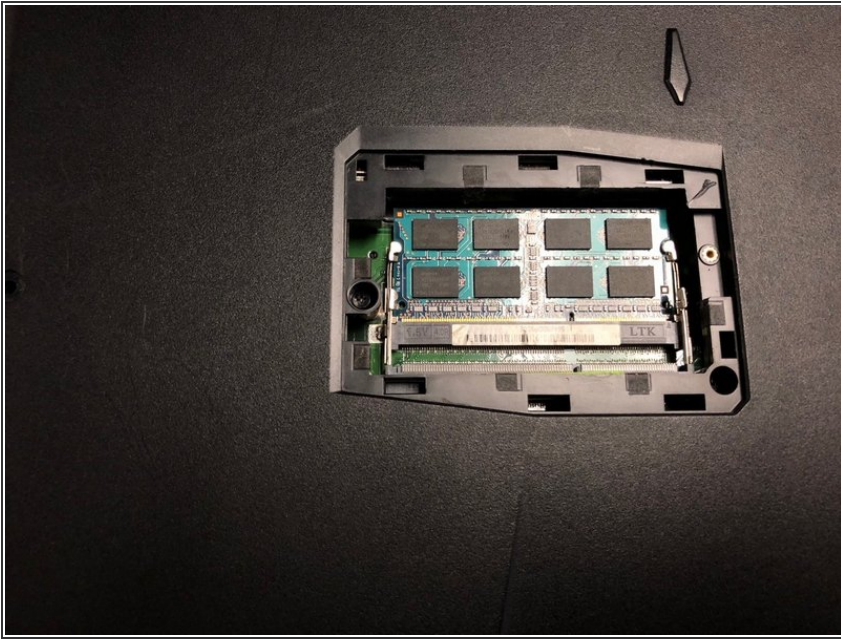
- Push outwards on the clips to release the RAM stick. The stick should pop up at an angle.

Step 4



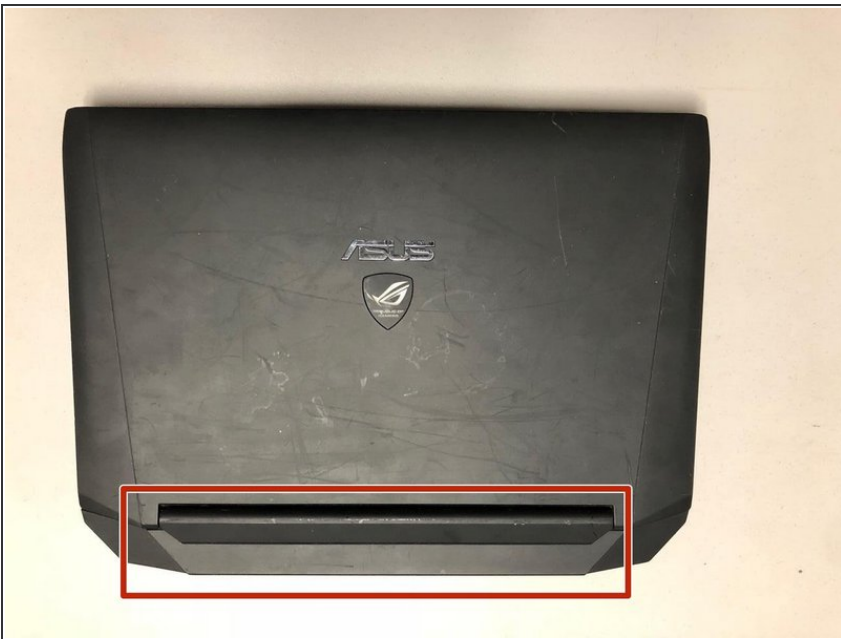
- Pull out the RAM stick carefully.
- ⚠ Do not use a prying motion as this will damage the hardware. Be careful not to damage the gold section of the RAM stick.

Step 5



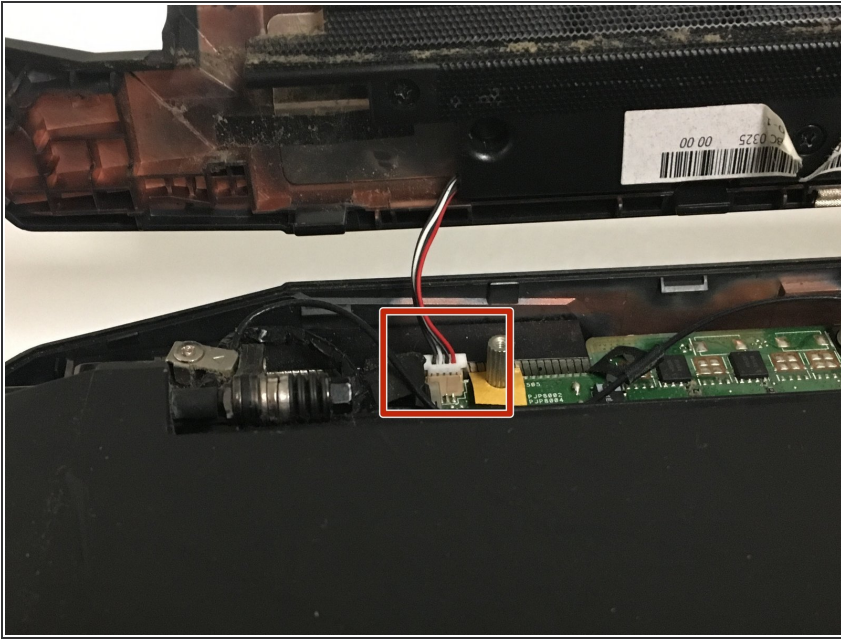
- Repeat steps 3-4 to remove the second RAM stick.

Step 6 — Speaker Cover



- Gently pry the back hinge cover piece away from the device.

Step 7



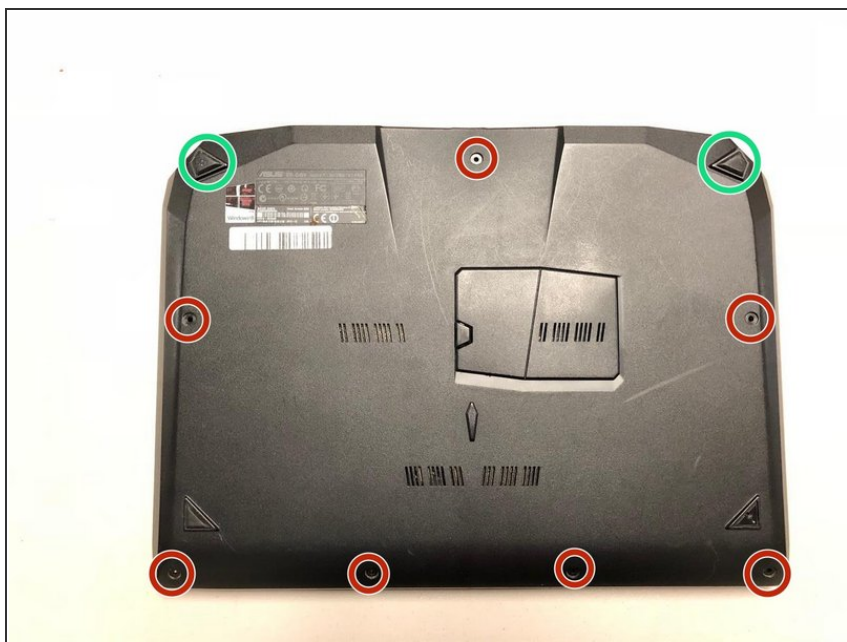
- Disconnect the speaker cable from the motherboard.

Step 8 — Keyboard



- Remove the two screws from underneath the RAM cover.

Step 9



- Remove all of the screws from the bottom of the case.
- If replacing the screen, remove the rubber feet to reveal two more screws.

Step 10



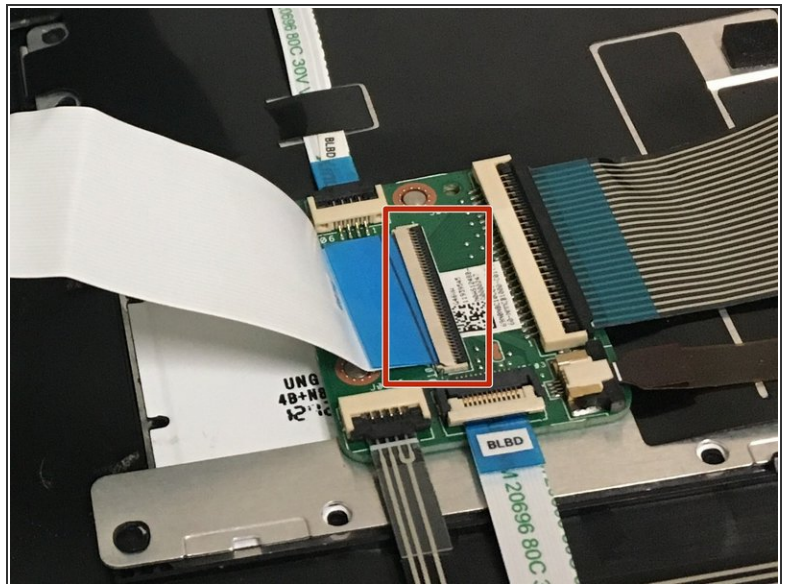
- Turn the laptop over and remove the screws as shown

Step 11



- Carefully pry the keyboard away using your spudger and the opening tools.
- ⚠ Be sure not to damage the clips holding the keyboard to the bottom case.

Step 12



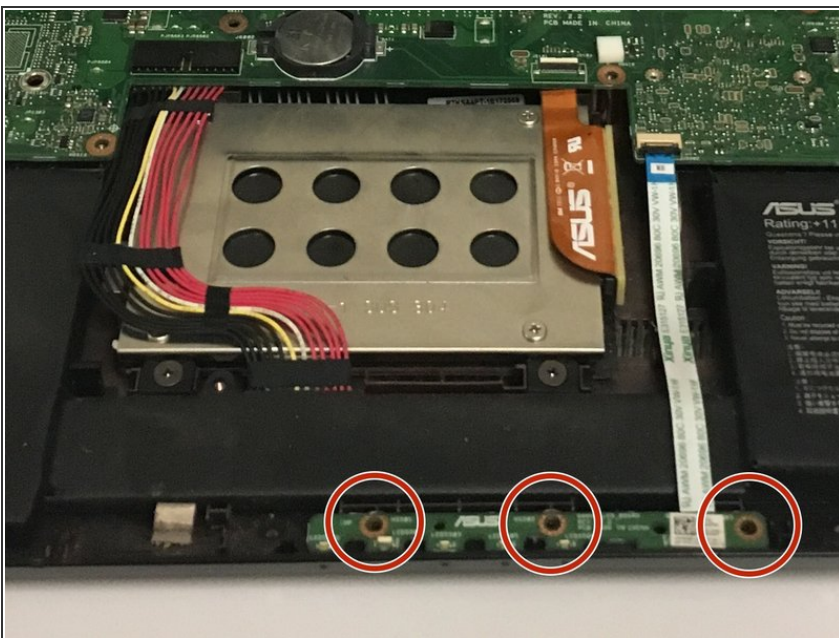
- Detach the ribbon cable by releasing the clip

Step 13 — Indicator Lights



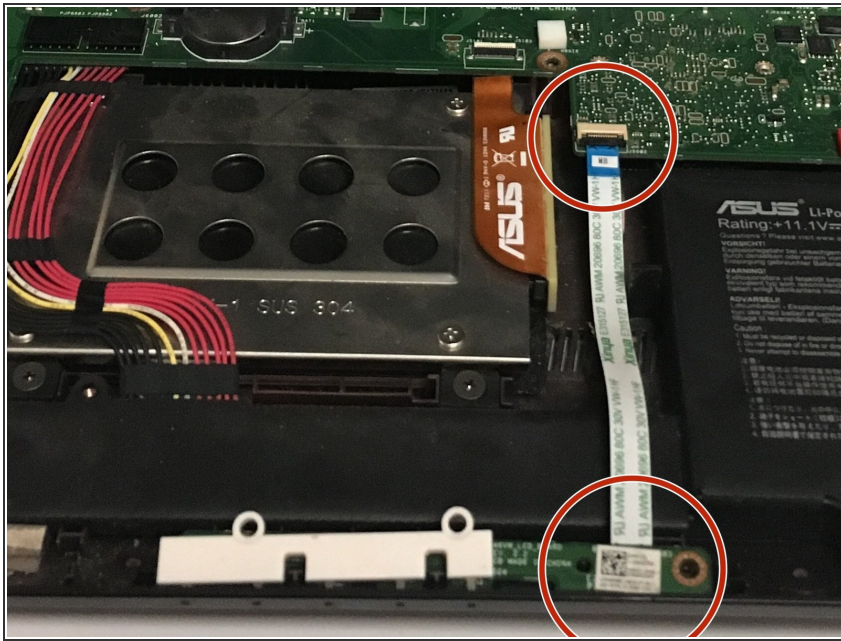
- With the motherboard exposed, locate the Indicator Lights and their white plastic housing piece.

Step 14



- Remove all 3 screws from the motherboard connection using the Phillips #0 screwdriver.
- Pull the plastic white housing piece away from the case.

Step 15



- Locate the flat LED cable that connects the lights to the motherboard.
- Flip the black cover upwards before pulling on the cable.
- Repeat for the other connector piece.

To reassemble your device, follow these instructions in reverse order.