



Canon PowerShot SD30 Control Panel Replacement

Use this guide to replace the control panel in...

Written By: Diego Hughes



INTRODUCTION

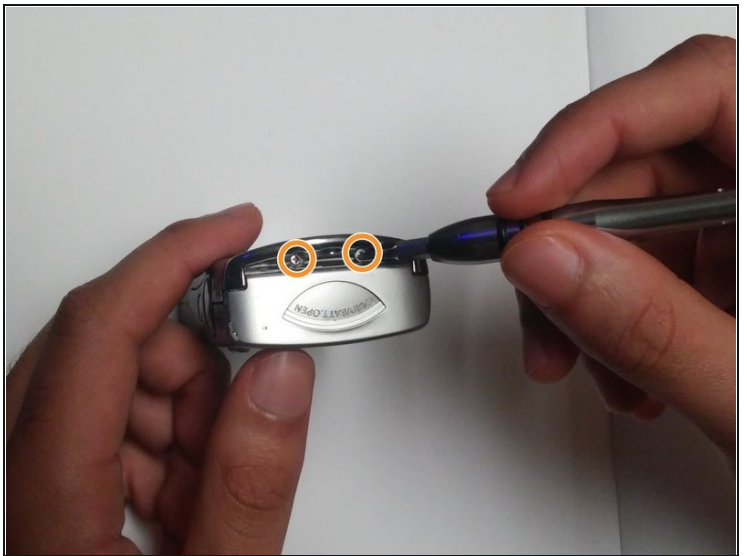
Use this guide to replace the control panel in your camera.

TOOLS:

Phillips #00 Screwdriver (1)

Tweezers (1)

Step 1 — Front Cover



- ① Be sure to remove the wrist strap and battery before removing the cover.
- Remove the two 2mm black screws that are located on the underside of the camera.
- Remove the two 3mm silver screws from the right side of camera.

Step 2



- Gently remove the front cover.

Step 3 — Back Cover



① Remove the wrist strap and battery before removing the back cover.

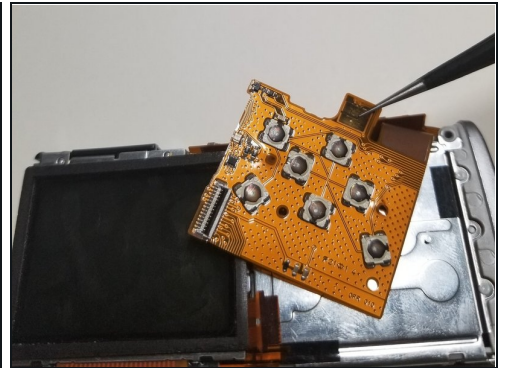
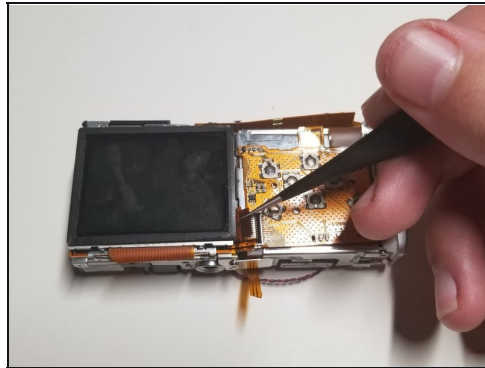
- Remove the 2mm screw from the back of the camera.
- Remove two 2mm screws from the bottom of the camera.
- Remove two 2mm screws the left side of camera.

Step 4



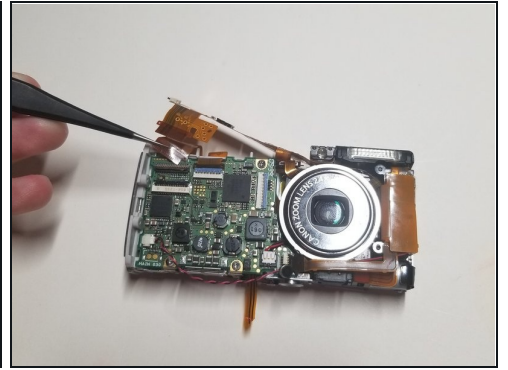
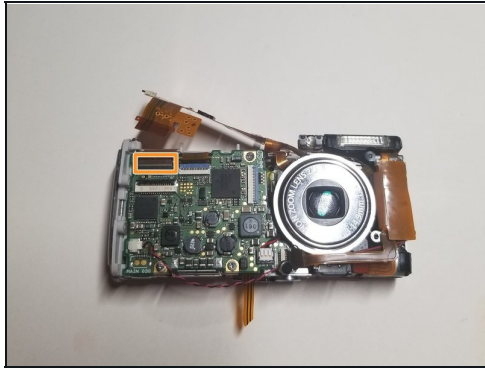
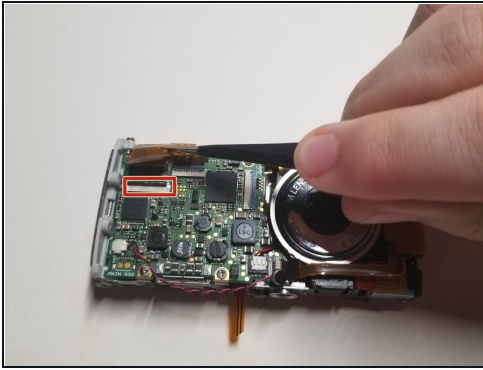
- Gently remove the back cover.

Step 5 — Control Panel



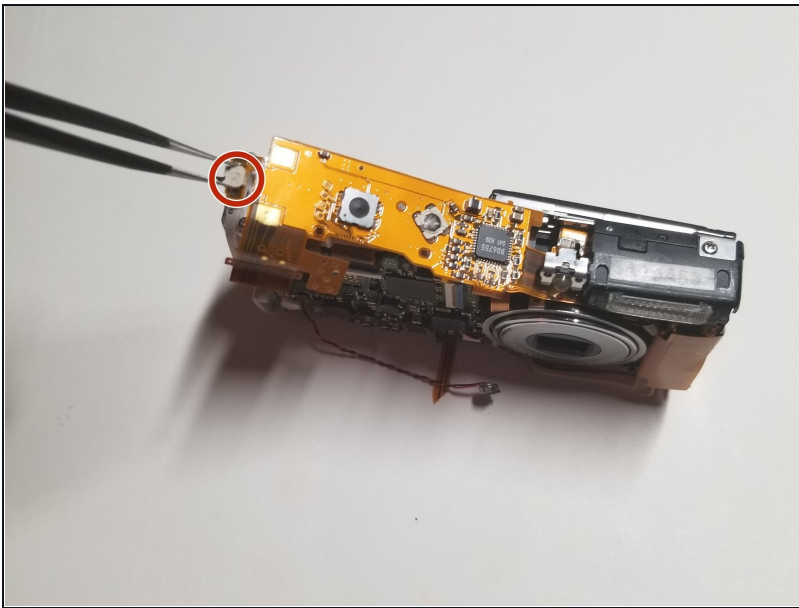
- Use the [tweezers](#) to pull up on the piece of black plastic connected to the ribbon to unhook and remove the ribbon connected to the screen.
- ① You also have to pull up on the top part of the control panel because it is connected to the metal by a sticky pad.

Step 6



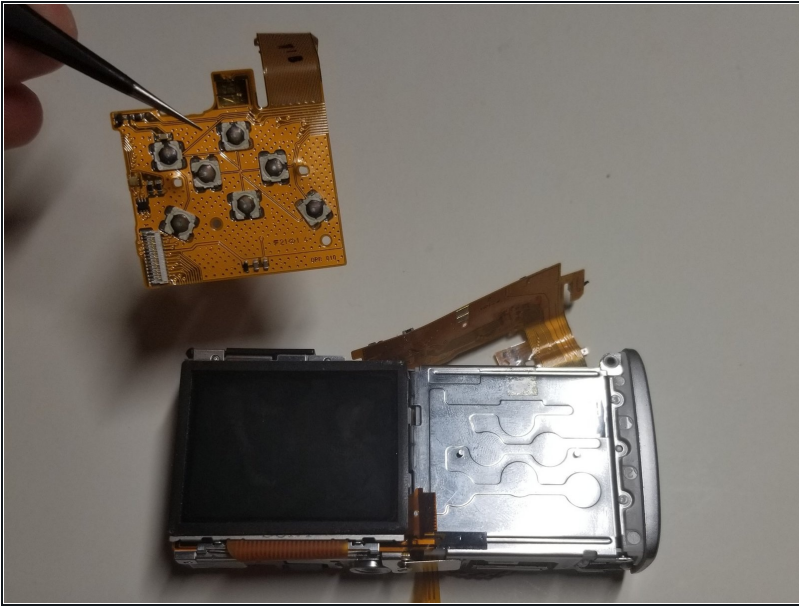
- Turn the camera over to the side with the lens and remove the ribbon on the left side.
- After removing the ribbon there will be a second ribbon to remove that was hiding underneath the first ribbon.

Step 7



- Lift up the button that connects to the power button of the camera so you can remove the control panel.

Step 8



- Remove the control panel from the camera.

To reassemble your device, follow these instructions in reverse order.