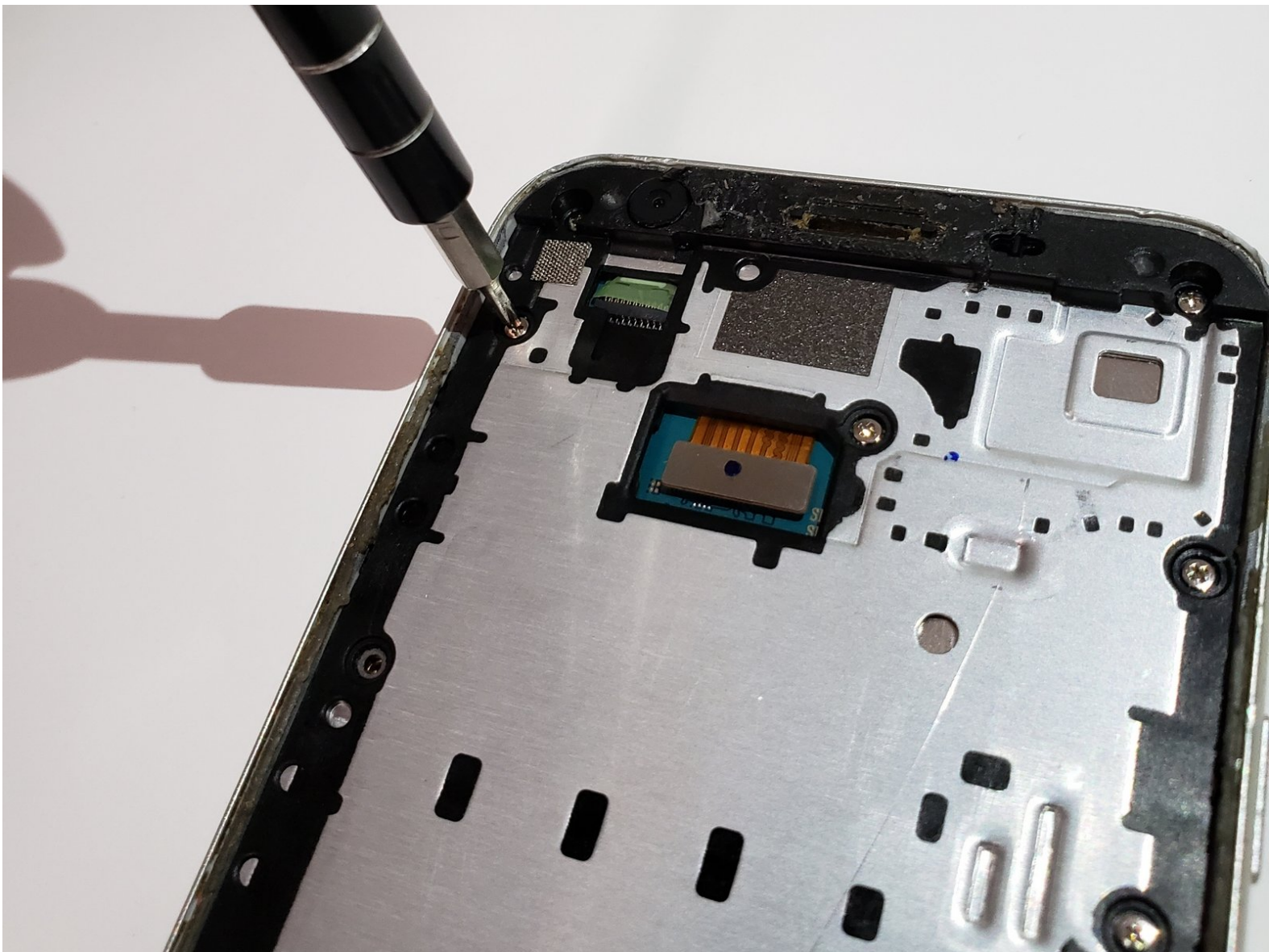




# Samsung Galaxy J3 Mission Midframe Replacement

How to remove the midframe from the Samsung Galaxy J3 Mission. This panel encloses the motherboard for protection.

Written By: Joseph Toth



---

## INTRODUCTION

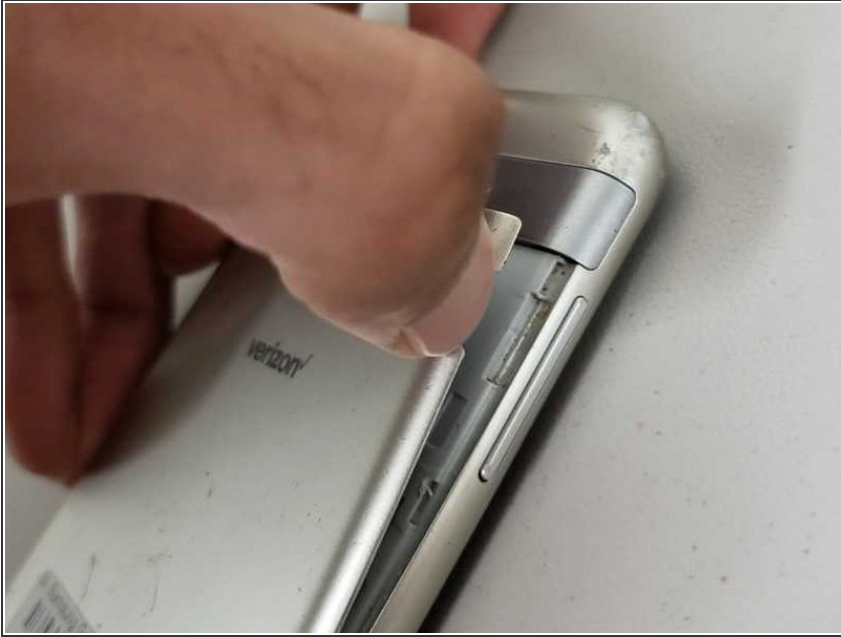
Removing the midframe takes a bit of time to do, as there are many screws that help keep it in place. This panel is in place to protect the important inside components of the device and also to give the device stability.



### TOOLS:

- [iFixit Opening Tool](#) (1)
  - [Phillips #000 Screwdriver](#) (1)
-

## Step 1 — Back Cover



- Insert your fingernail into the back cover removal slot and gently pull back until the cover pops off.

## Step 2 — Battery



- ⚠ Make sure that your device is powered off before removing the battery.
- Insert your fingernail into the battery removal slot and pull back until the battery pops out.

## Step 3 — SD and SIM Cards



- Use your finger to slide the SD and SIM card out of the device.

## Step 4 — Screen



- Use an iFixit opening tool to lift the screen from one of the vertical sides of the phone and continue gently

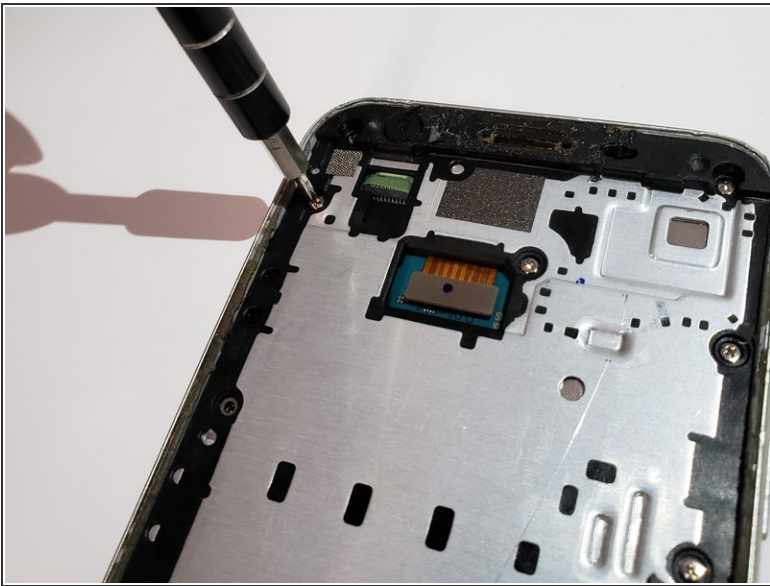


prying until the screen is loose enough to safely remove.

- ⓘ The damaged screen is connected under the screen assembly with a small plastic brace; remove this with an iFixit opening tool.

⚠ Be careful around the home button. It has little tabs to keep it in the frame, but they will break if the adhesive isn't loosened with age or heat.

## Step 5 — Midframe



- Using a Phillips #000 screwdriver, remove all eleven 5mm screws from the metal panel.

## Step 6



- Turn the device over, and push firmly to separate the metal plate from the back paneling.

To reassemble your device, follow these instructions in reverse order.