



LeapFrog LeapPad Ultimate Battery Replacement

Replacing the battery will bring the device back to life for kids to be entertained.

Written By: Fernando Lozano-Garcia



INTRODUCTION

To replace the battery is a mild task to get to and can take up to 15 minutes to complete. A far warning, patience is key because the device itself is difficult to open . The only tools that will be needed will be a screwdriver and some tweezers .

TOOLS:

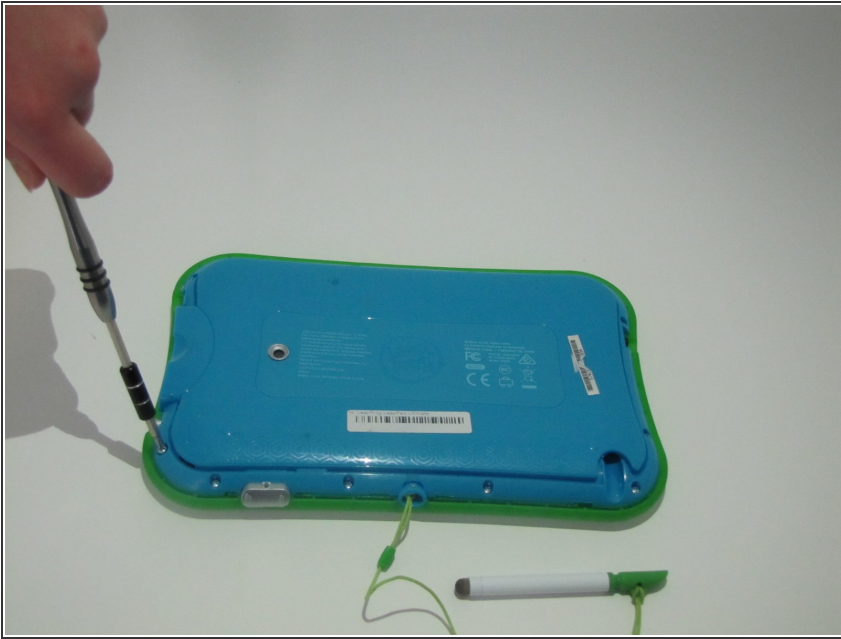
- [Tweezers](#) (1)
 - [Phillips #1 Screwdriver](#) (1)
 - [iFixit Opening Tools](#) (1)
-

Step 1 — Battery



- Flip over the Pad to its back side to begin the removal of the back panel.
- Remove the blue rim along the edge of the device. It runs along the green silicone lining.
 - ⚠ This is very difficult to remove , so do be patient. To help remove the seal both the metal and the plastic spudgers may be used.
- ⓘ Remove the pen from its place before starting to avoid tangling.

Step 2



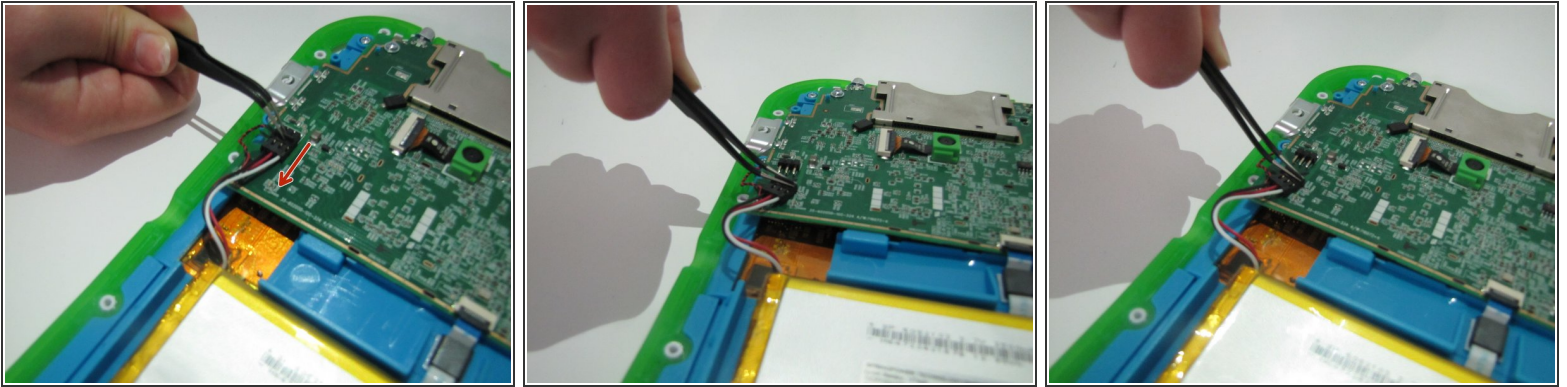
- Once the blue rim is removed, the 12 screws will be visible.
- Use a Phillips #1 screwdriver to unscrew all 12 screws.

Step 3



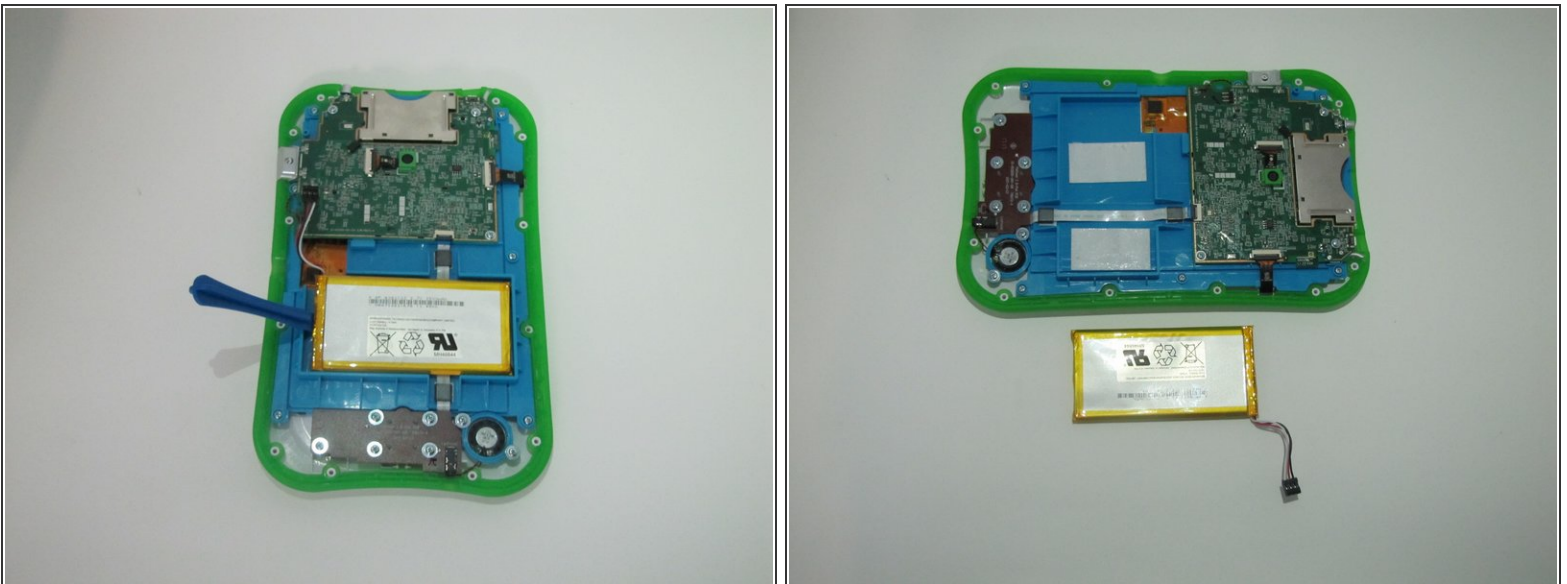
- Remove the back panel of the device exposing the internal components of the device.
- Once the internal components are exposed locate the point which connects the battery to the motherboard.

Step 4



- i The point connecting the battery and motherboard is made up of three wires, red, white, and black.
- The plastic portion on the motherboard's end will have a small notch on top. Pull the notch in the direction towards the battery with the curved tweezers. This will disconnect the wires from the motherboard.

Step 5



- Carefully remove the battery from the LeapPad, use the plastic spudger to gain leverage, if needed.

To reassemble your device, follow these instructions in reverse order.

This document was generated on 2020-11-28 07:03:15 AM (MST).

