



Brentwood TS-292B Toasting Lever Replacement

If you are experiencing issues with the lever...

Written By: Elly Ayala



INTRODUCTION

If you are experiencing issues with the lever on your Brentwood TS-292B not functioning properly it might be time to replace it. This guide will lay out an easy to follow step by step process to demonstrate how to properly remove and replace the existing lever of your toaster.

Before beginning this process, the toaster must be unplugged from the outlet.

TOOLS:

Phillips #2 Screwdriver (1)

Metal Spudger Set (1)

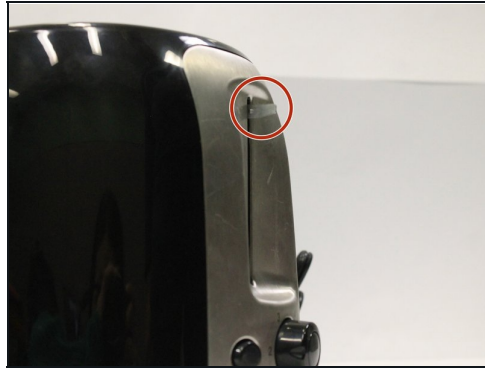
Tweezers (1)

Step 1 — Toasting Lever



- Use a Phillips #2 screwdriver to remove all of the 6mm screws from the bottom of the toaster.

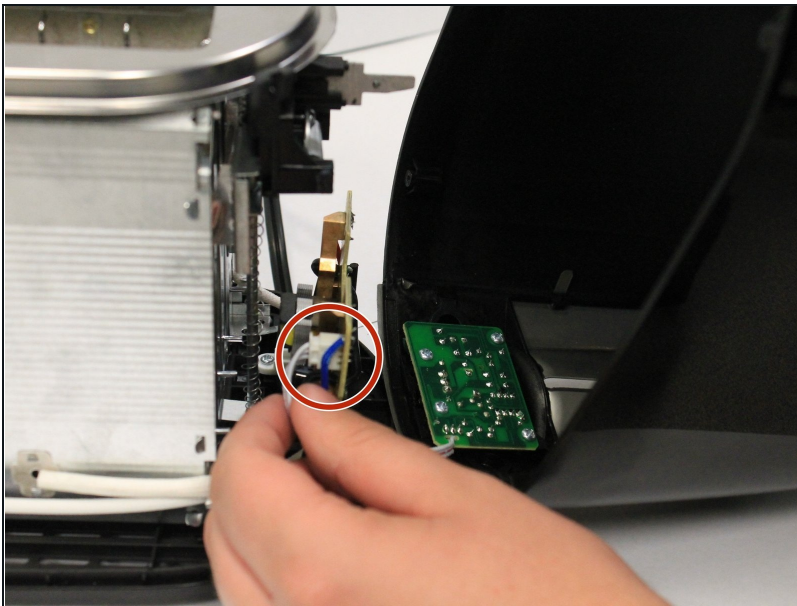
Step 2



- Push in the small tab located to the left, and pull the lever tab away from the toaster with force.

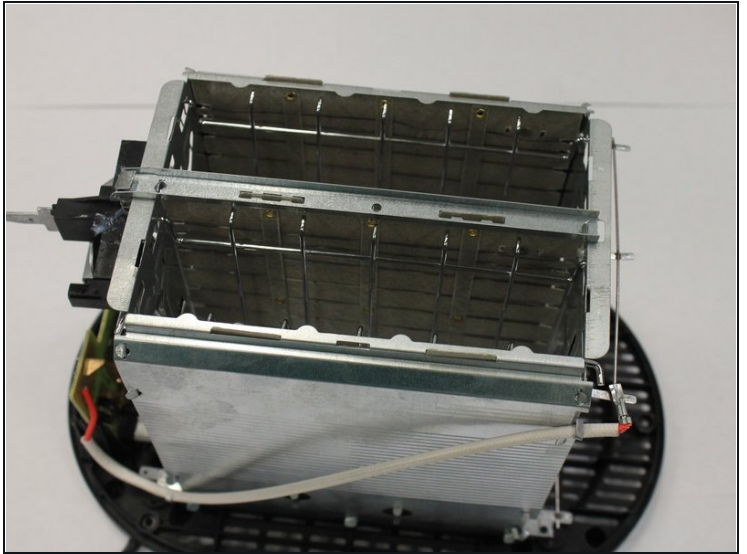
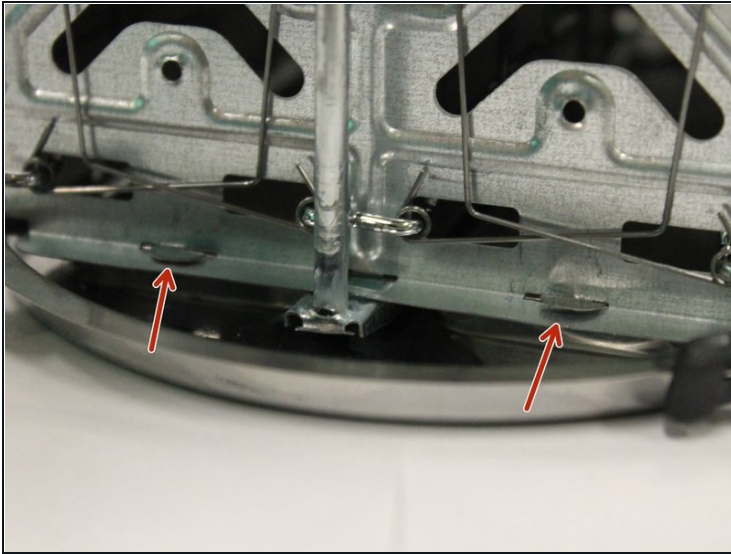
① Remove the toaster cover carefully.

Step 3



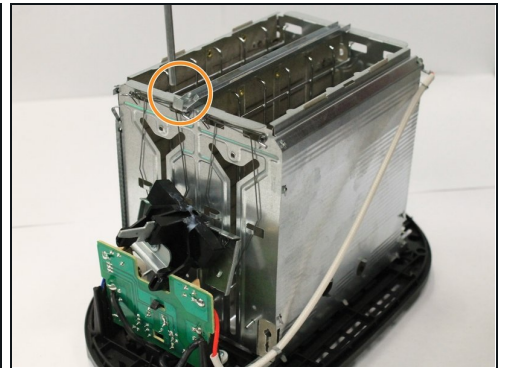
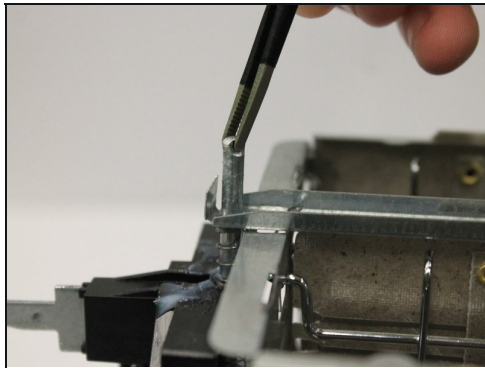
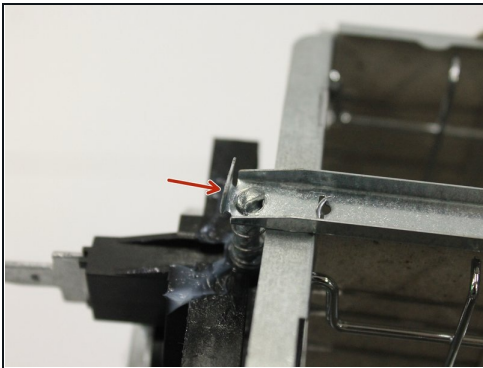
- Detach the bundled cable connector by carefully pulling it away from the circuit board.

Step 4



- Push the tabs in and lift the top of the toaster off.

Step 5



- Lift up the tab that is located at the front of the toasting lever.
- Use [tweezers](#) to carefully lift up the metal bar.
- Remove the springs and replace them with new ones.

To reassemble your device, follow these instructions in reverse order.