



# Toshiba Satellite p875 s7200 Hard Drive Replacement

How to replace a Toshiba Satellite p875 s7200 hard drive.

Written By: Danny Amado



## INTRODUCTION

If you need to replace the hard drive, follow this guide. The hard drive is located underneath the computer. To replace this part, you will need a Phillips 00 screw driver and a plastic prying tool. This process should not require any excessive force.



### TOOLS:

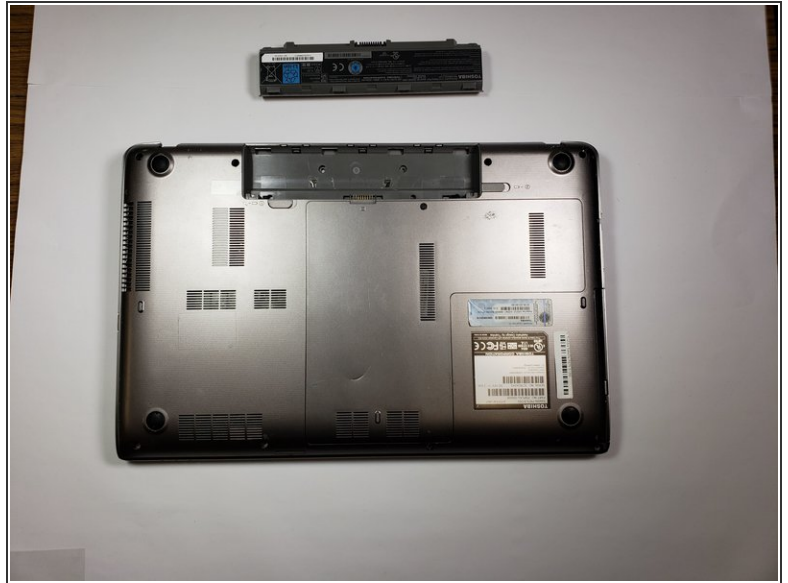
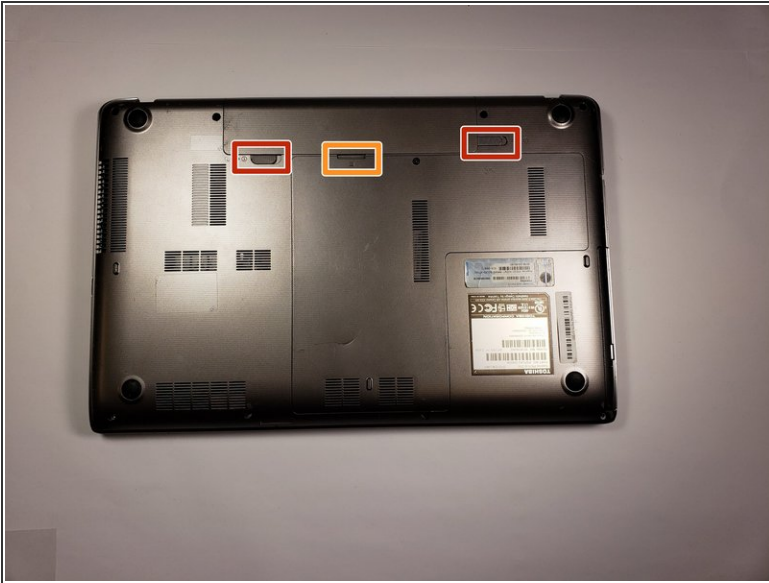
- [Phillips #0 Screwdriver](#) (1)
- [iFixit Opening Tools](#) (1)



### PARTS:

- [1 TB SSD / Upgrade Bundle](#) (1)

## Step 1 — Hard Drive



- Remove the battery by sliding the tabs to the left.
- Use the spudger to lift the battery out.

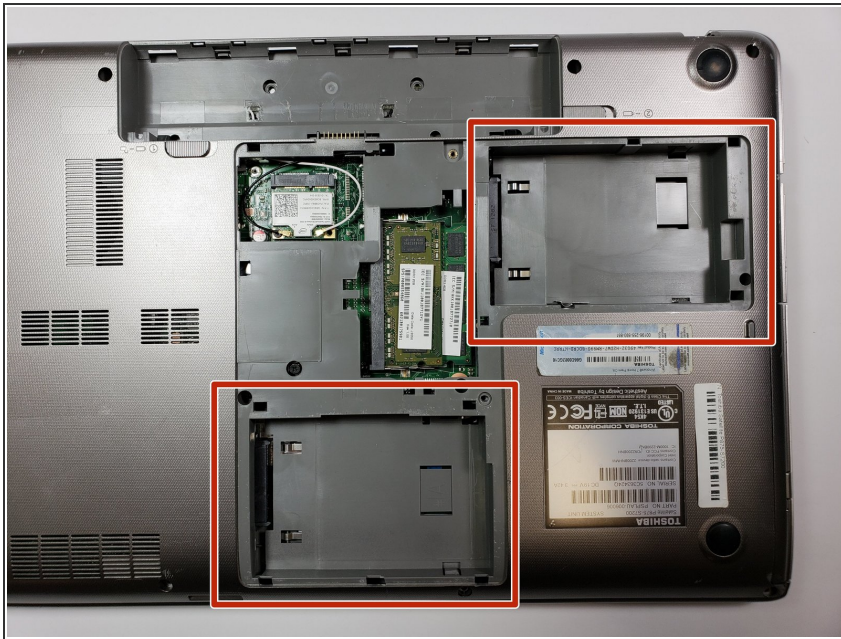
## Step 2



- Use the Phillips head screw driver to remove the screw holding the back plate on.
- Use the spudger to remove the back plate.



### Step 3



- Remove the two hard drives.
- ★ Take note of the orientation of the hard drive on the terminals for reassembly.

To reassemble your device, follow these instructions in reverse order.