



DYMO LabelWriter 450 Back Plate Replacement

It is necessary to remove the Back Plate in order to replace any of the parts in the DYMO LabelWriter 450.

Written By: Jared Finkel



INTRODUCTION

Use this guide to remove/replace the backplate of your DYMO LabelWriter 450 Series. This is a step-by-step guide and all steps should be followed in order to achieve desired results.

The backplate has the serial number, model number, power connector, and USB connector. Your backplate may need to be removed to access/replace the thermal printer head, various printer parts, and connectors. You will need a Phillips #1 screwdriver and a spudger to complete the removal process.

Remember this device has a blade located within the front panel, so be careful not to touch it while working. Disconnect the power connector and USB connector cords before the removal process.



TOOLS:

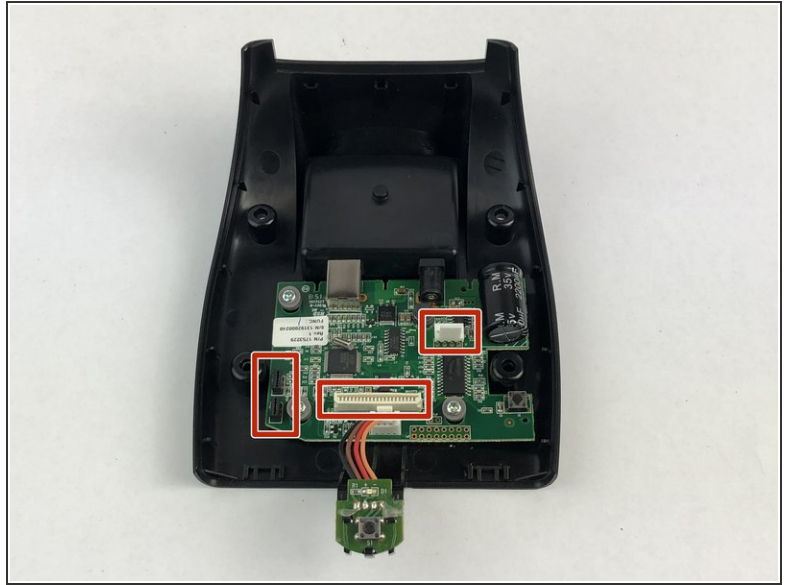
- [Phillips #1 Screwdriver](#) (1)
 - [Spudger](#) (1)
-

Step 1 — Back Plate



- Make sure the device is unplugged. Then, turn over the device so that the label is readable.
- Remove the two 15.7mm screws on the top of the device first, and then the two 26.5mm screws on the bottom (they are in the smaller holes and larger holes respectively) using a **Phillips #1** screwdriver.
- You need a spudger to orient the bottom screws so that they can be removed.

Step 2



- Once the Back Plate has been unscrewed, you will see the components from the top of the device plugged into the motherboard. You will only have 1-2 inches of clearance to unplug the components from the motherboard.
 - There are four components to unplug: the power cable connector, the two small no-fuss ribbon cable connectors, and the large no-fuss ribbon cable connector. The order does not matter.
- ⚠ This device has a blade located within the front panel. When handling the device, be careful not to touch the blade.**

To reassemble your device, follow these instructions in reverse order.