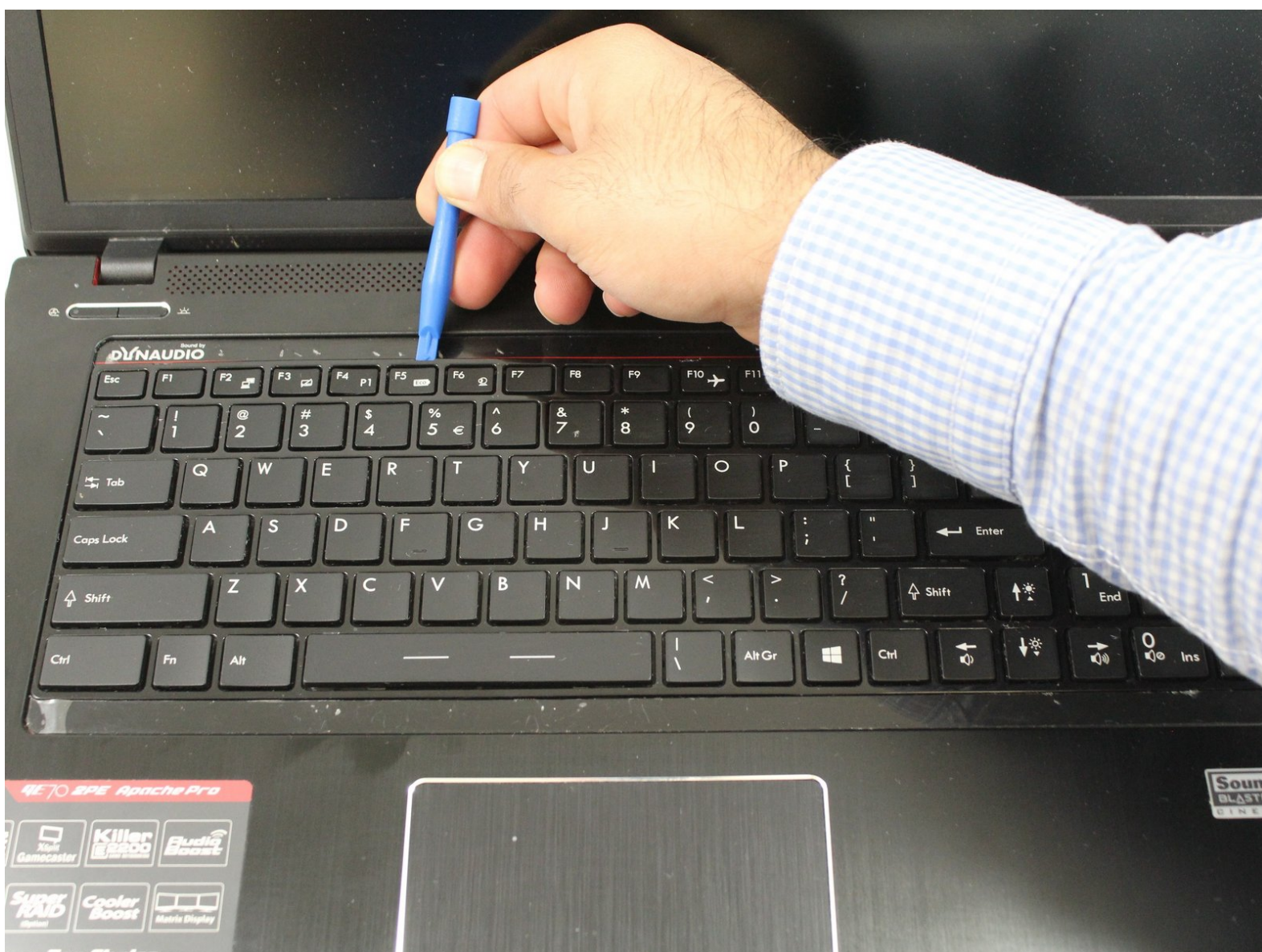




MSI GE70 2PE Apache Pro Keyboard Replacement

Written By: mazin





TOOLS:

- [iFixit Opening Tools](#) (1)
- [Phillips #0 Screwdriver](#) (1)

Step 1 — Keyboard



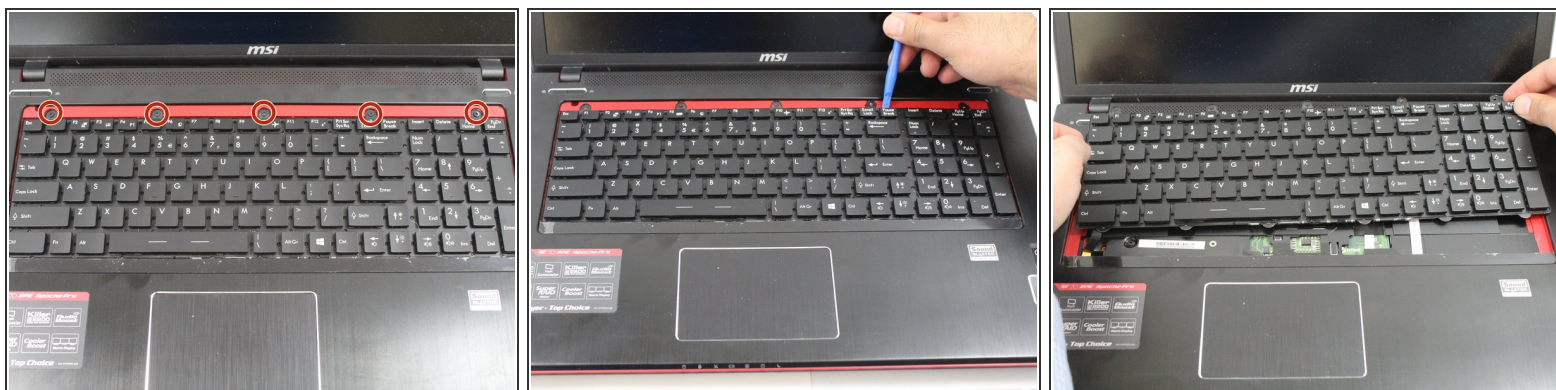
- Insert iFixit opening tool as shown in the picture to pry up on the keyboard guard.
- Remove the keyboard guard.

Step 2



- Insert the iFixit tool under the plastic screw cover.
- Grab the plastic part with your hand and lift it off the casing.
- Remove the plastic part to reveal the screws holding the keyboard in place.

Step 3



- Unscrew the five screws located at the top of the keyboard.
- Use the opening tool to lift the keyboard from its position
- ⓘ Be mindful of the ribbon cables when lifting the keyboard from the palmrest.

To reassemble your device, follow these instructions in reverse order.