



HP Envy 4520 AC Adapter Replacement

Use this guide to replace the AC adapter in your HP Envy 4520.

Written By: katie hartwig



INTRODUCTION

The AC adapter may need to be replaced if you are experiencing issues with the power connection to your printer. The removable power cord is plugged into the AC adapter.

TOOLS:

- [iFixit Opening Tools](#) (1)
-

Step 1 — AC Adapter



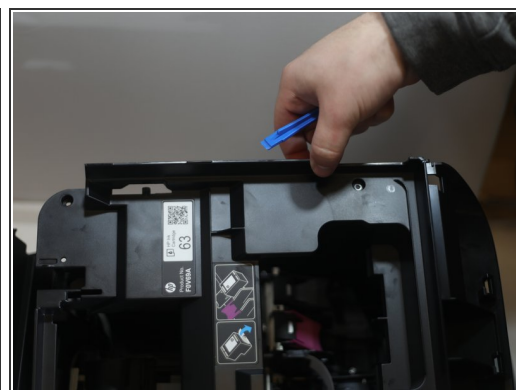
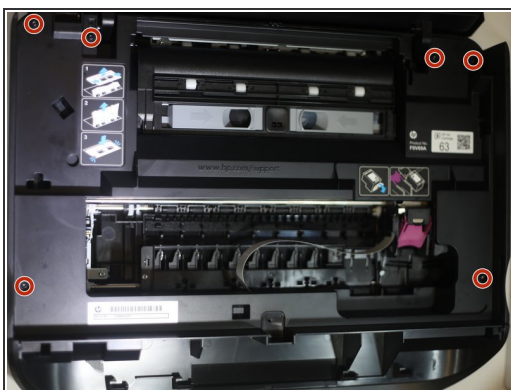
- Ensure that the printer is turned off.
- Locate and remove the black power cord from the back of the printer.

Step 2



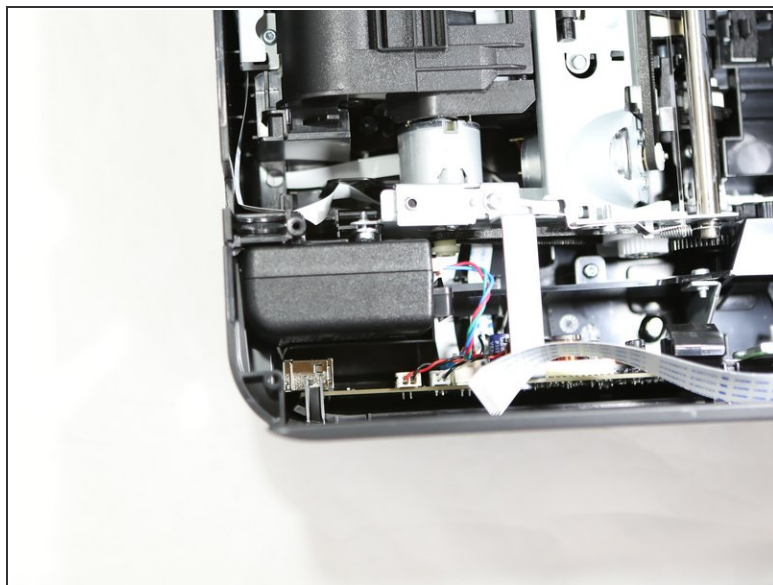
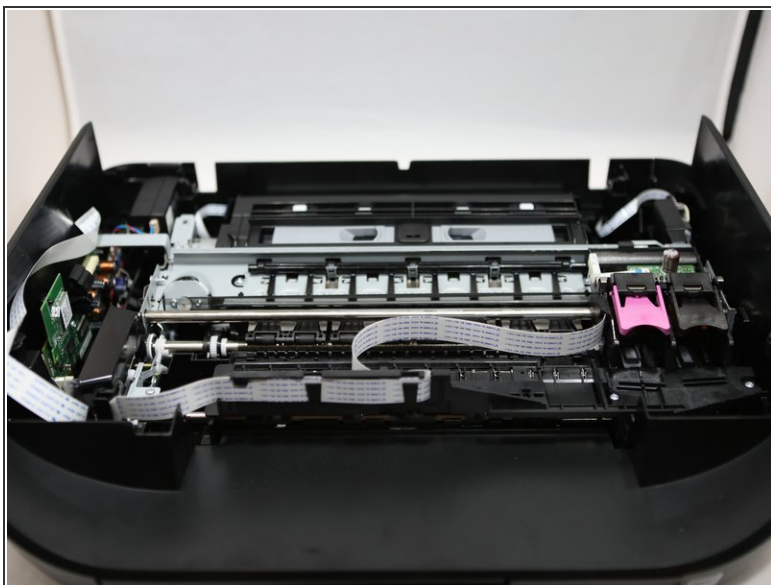
- Lift the top of the printer.
- Using the plastic opening tool, remove the clip holding the scanner bed up by prying the clip away from the the side of the scanner bed.

Step 3



- Remove the six 14 mm T10 Hex screws.
- Pry the plastic cover off using the blue opening tool.

Step 4



- ⓘ Locate the the AC adapter at the top left corner of the device which is connected by intertwined red and blue wires.

Step 5



- Remove the adapter by pinching the plastic head of the wire connector and pulling it out of the port.

To reassemble your device, follow these instructions in reverse order.