



ZTE Tempo X Front Facing Camera Replacement

In this guide, you will be able to remove and replace a ZTE Tempo Rear-facing camera.

Written By: Conager Robb



INTRODUCTION

In the event that your ZTE Tempo X is having trouble taking photos, use this guide to replace the front facing camera.



TOOLS:

- [Spudger](#) (1)
 - [Tweezers](#) (1)
 - [Phillips #00 Screwdriver](#) (1)
-

Step 1 — Back Cover



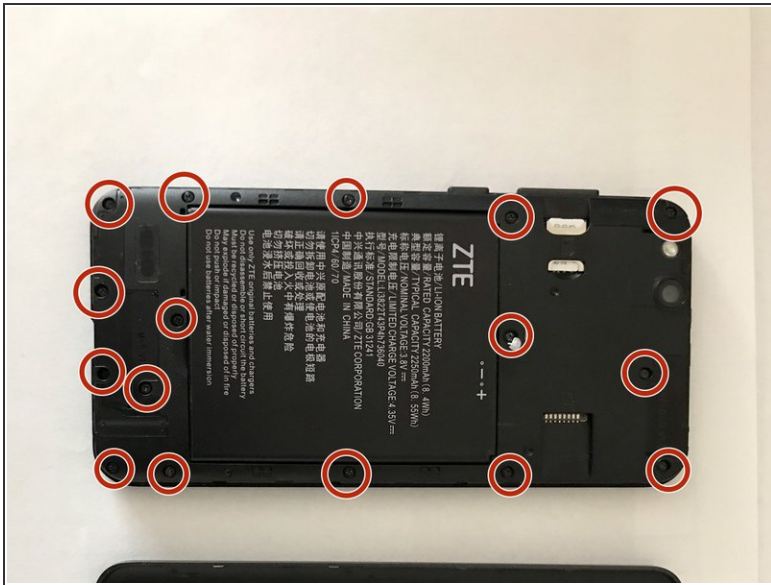
- Remove back cover using the divot provided.

Step 2 — Battery



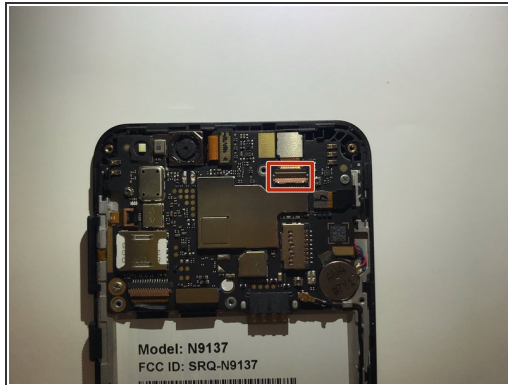
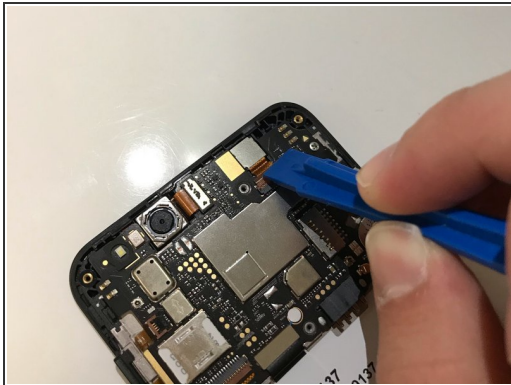
- Find the divot near the bottom of the battery and remove the battery from the device.

Step 3 — Front Facing Camera



- Remove the sixteen 3 mm screws on the back cover of the phone using the Phillips #000 screwdriver.

Step 4



- Using the spudger, detach the brown flap by flipping it towards you.
- With a fine pair of tweezers, pull the front facing camera from the phone.

To reassemble your device, follow these instructions in reverse order.