



ZTE Tempo X SIM Card Replacement

In this guide, you will learn how to easily remove a SIM card from your ZTE Tempo X.

Written By: Victor Rodriguez



INTRODUCTION

Use this guide to remove or replace the SIM card in your ZTE Tempo X.



TOOLS:

- [Spudger](#) (1)
-

Step 1 — Back Cover



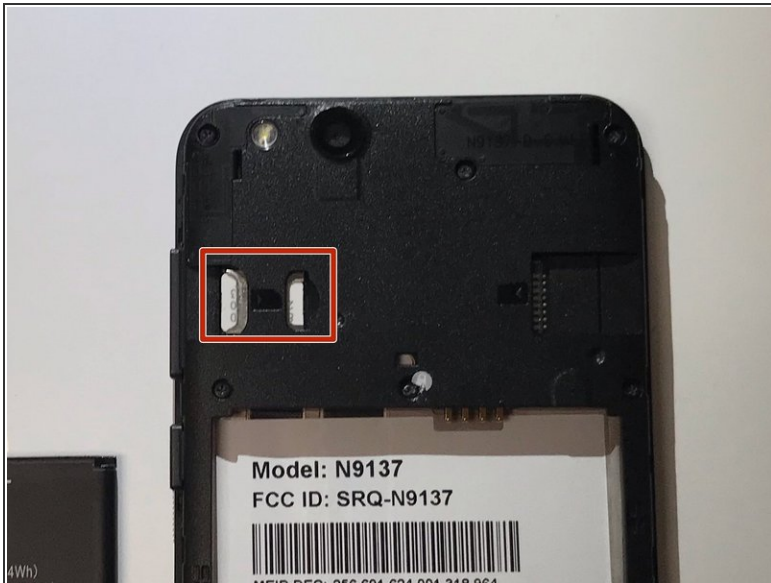
- Remove back cover using the divot provided.

Step 2 — Battery



- Find the divot near the bottom of the battery and remove the battery from the device.

Step 3 — SIM Card



- With a spudger, gently push the sim card away from the center of the phone to remove it.

To reassemble your device, follow these instructions in reverse order.