



JBL Pulse 2 Button Circuit Board Replacement

This guide will show you the steps necessary to replace the button circuit board for the JBL Pulse 2.

Written By: Dalton Little



INTRODUCTION

If you are experiencing any difficulties using the buttons on your JBL Pulse 2, you may need to replace the button circuit board.

TOOLS:

- [Metal Spudger](#) (1)
 - [Spudger](#) (1)
 - [Tweezers](#) (1)
 - [Phillips #1 Screwdriver](#) (1)
-

Step 1 — Button Circuit Board



- Remove the rubber rings from either end of the device.
- If there is difficulty in lifting the rings from the device, use the metal spudger.

Step 2



- Remove the four 4.8mm Phillips #1 screws from each end of the device with the Phillips head screwdriver.
- Lift the end pieces off of the device.

Step 3



- Remove the four 9.5mm Phillips #1 screws from each end of the device.

Step 4



- Peel one end off and slowly draw it across the length of the device until you get to the other side.

Step 5



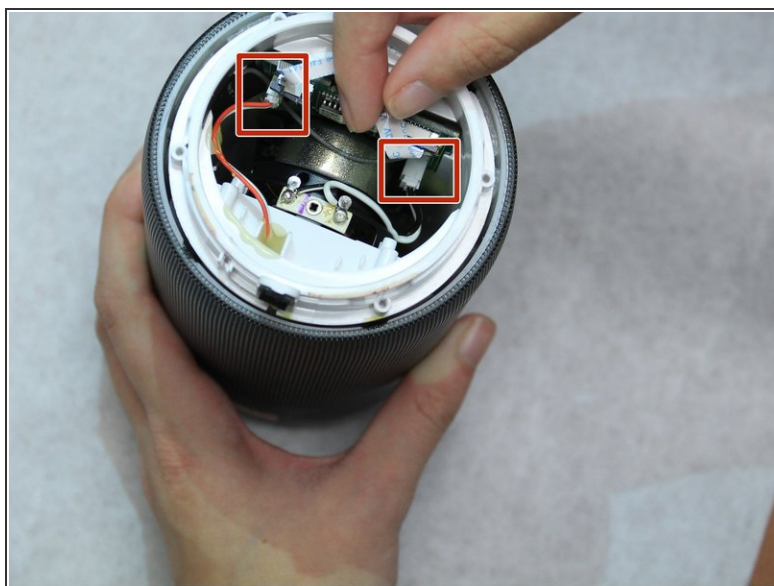
- Remove the four 7.9mm Phillips #1 screws along the black centerpiece of the device between the camera and the auxiliary port.
- Lift up the casing and circuit board but do not try and remove the ribbon wires.

Step 6



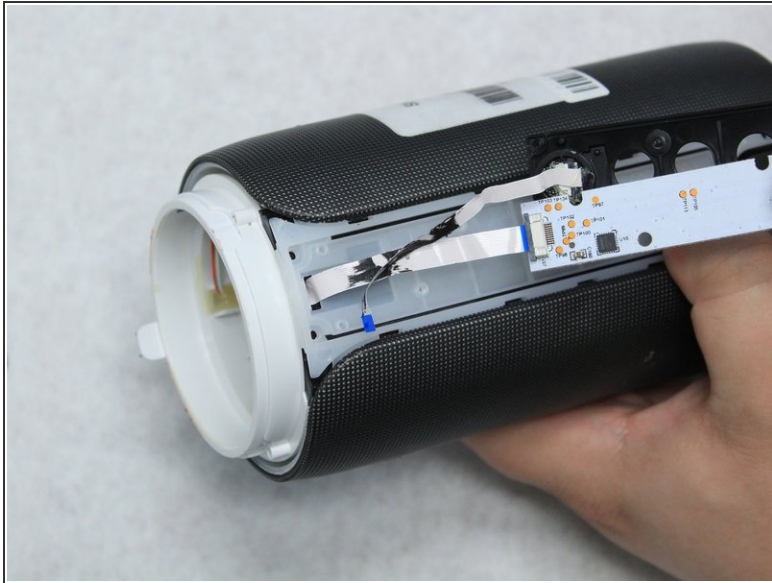
- Remove the cover from the end that the ribbon wires are attached to. It should peel off easily.

Step 7



- Unlatch the mechanism holding the ribbon wires in place then disconnect them from the motherboard.
- To access the wires, remove some of the black glue holding them in place with the spudger.

Step 8



- Slowly pull the ribbon wires out from the outside.

⚠ If there is too much resistance, remove more of the black glue.

To reassemble your device, follow these instructions in reverse order.